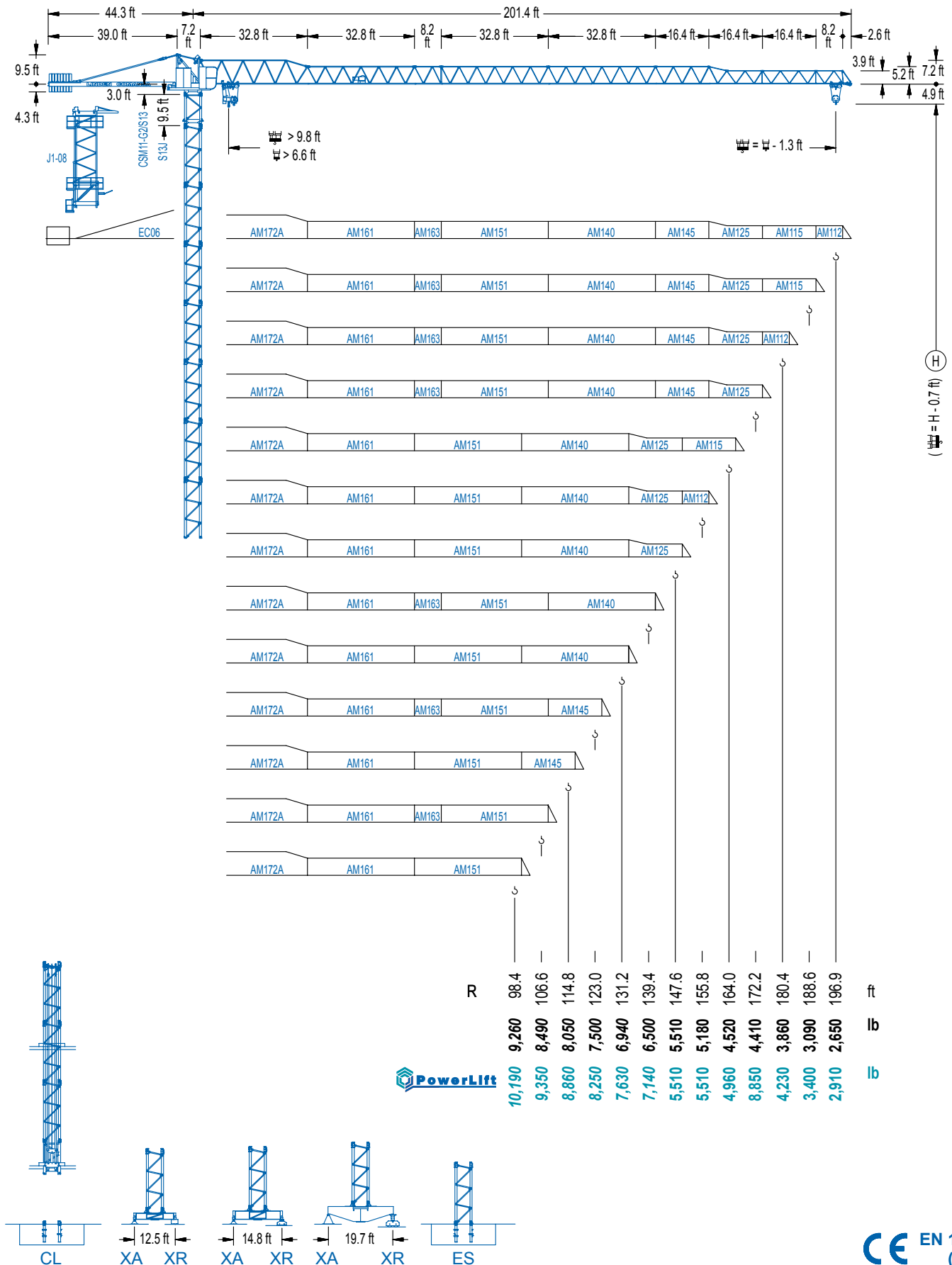


LC 1100

11 LC 132

11,020 lb



LC 1100

DIAGRAMA DE CARGAS

Load chart / Diagramme de charges / Lastdiagramm / Diagramma di carico / Диаграмма распределения нагрузки

R (ft)	III						II												I
196.9	55.8	65.6	72.2	85.3	91.9	96.1	108.9	114.8	123.0	131.2	139.4	147.6	155.8	164.0	172.2	180.4	188.6	196.9	ft
	11,020	9,020	8,000	6,460	5,840	5,510	5,510	5,180	4,760	4,410	4,100	3,810	3,570	3,350	3,150	2,950	2,800	2,650	lb
188.6	59.7	65.6	72.2	85.3	91.9	98.4	103.3	117.5	123.0	131.2	139.4	147.6	155.8	164.0	172.2	180.4	188.6	ft	
	11,020	9,830	8,750	7,080	6,440	5,890	5,510	5,510	5,200	4,830	4,500	4,190	3,920	3,680	3,460	3,260	3,090	lb	
180.4	67.9	72.2	85.3	91.9	98.4	105.0	114.8	117.5	133.9	139.4	147.6	155.8	164.0	172.2	180.4	ft			
	11,020	10,230	8,330	7,610	6,970	6,390	5,690	5,510	5,510	5,270	4,920	4,610	4,340	4,080	3,860	lb			
172.2			72.2	85.3	91.9	98.4	105.0	114.8	121.4	125.0	142.7	147.6	155.8	164.0	172.2	ft			
			11,020	8,990	8,200	7,520	6,920	6,170	5,730	5,510	5,510	5,290	4,960	4,670	4,410	lb			
164.0			70.2	85.3	91.9	98.4	105.0	114.8	121.4	138.8	139.4	147.6	155.8	164.0	ft				
			11,020	8,690	7,910	7,250	6,680	5,930	5,510	5,510	5,470	5,110	4,810	4,520	lb				
155.8			74.5	85.3	91.9	98.4	105.0	114.8	121.4	128.0	129.3	148.0	155.8	ft					
			11,020	9,350	8,530	7,830	7,230	6,440	5,970	5,580	5,510	5,510	5,180	lb					
147.6			74.1	85.3	91.9	98.4	105.0	114.8	121.4	128.0	128.9	147.6	ft						
			11,020	9,330	8,510	7,800	7,210	6,420	5,970	5,560	5,510	5,510	5,510	lb					
139.4					90.2	98.4	105.0	114.8	121.4	131.2	138.1	ft							
					11,020	9,920	9,170	8,200	7,650	6,940	6,500	lb							
131.2					89.2	98.4	105.0	114.8	121.4	129.9	ft								
					11,020	9,790	9,060	8,110	7,560	6,940	lb								
123.0			88.6	91.9	98.4	105.0	114.8	121.7	ft										
			11,020	10,580	9,720	8,990	8,050	7,500	lb										
114.8			87.6	91.9	98.4	105.0	113.5	ft											
			11,020	10,410	9,570	8,860	8,050	lb											
106.6			85.0	91.9	98.4	105.3	ft												
			11,020	10,010	9,220	8,490	lb												
98.4			84.0	91.9	97.1	ft													
			11,020	9,900	9,260	lb													

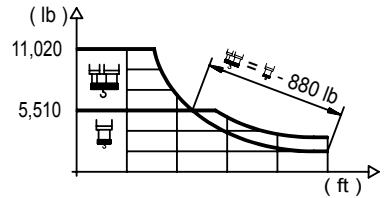
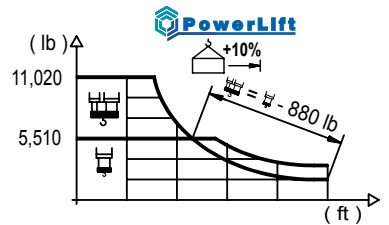


DIAGRAMA DE CARGAS POWERLIFT

Load chart PowerLift / Diagramme de charges PowerLift / Lastdiagramm PowerLift / Diagramma di carico PowerLift / Диаграмма распределения нагрузки PowerLift

R (ft)	III						II												I
196.9	58.4	72.2	78.7	85.3	91.9	98.4	100.7	117.1	123.0	131.2	139.4	147.6	155.8	164.0	172.2	180.4	188.6	196.9	ft
	11,020	8,490	7,610	6,880	6,240	5,690	5,510	5,510	5,200	4,810	4,480	4,170	3,900	3,660	3,440	3,260	3,090	2,910	lb
188.6	63.0	72.2	78.7	85.3	91.9	98.4	106.6	108.9	126.3	131.2	139.4	147.6	155.8	164.0	172.2	180.4	188.6	ft	
	11,020	9,350	8,380	7,580	6,900	6,310	5,670	5,510	5,510	5,270	4,920	4,590	4,300	4,030	3,790	3,590	3,400	lb	
180.4	71.9	78.7	85.3	91.9	98.4	106.6	114.8	123.0	124.7	144.4	147.6	155.8	164.0	172.2	180.4	ft			
	11,020	9,880	8,950	8,160	7,500	6,770	6,130	5,600	5,510	5,510	5,380	5,050	4,740	4,480	4,230	lb			
172.2	76.8	78.7	85.3	91.9	98.4	106.6	114.8	123.0	131.2	133.2	154.5	155.8	164.0	172.2	ft				
	11,020	10,690	9,700	8,860	8,130	7,360	6,700	6,130	5,620	5,510	5,510	5,470	5,140	4,850	lb				
164.0	74.8	78.7	85.3	91.9	98.4	106.6	114.8	123.0	128.0	129.6	149.9	155.8	164.0	ft					
	11,020	10,360	9,410	8,600	7,890	7,120	6,480	5,910	5,620	5,510	5,510	5,270	4,960	lb					
155.8			79.4	85.3	91.9	98.4	106.6	114.8	123.0	131.2	134.5	137.8	155.8	ft					
			11,020	10,120	9,260	8,510	7,690	7,010	6,420	5,890	5,710	5,510	5,510	lb					
147.6			79.7	85.3	91.9	98.4	106.6	114.8	123.0	131.2	138.1	147.6	ft						
			11,020	10,140	9,260	8,510	7,720	7,010	6,420	5,890	5,510	5,510	lb						
139.4						96.8	106.6	114.8	123.0	131.2	138.1	ft							
						11,020	9,830	8,990	8,250	7,630	7,140	lb							
131.2						96.1	106.6	114.8	123.0	129.9	ft								
						11,020	9,720	8,880	8,160	7,630	lb								
123.0						95.8	106.6	114.8	121.7	ft									
						11,020	9,700	8,860	8,250	lb									
114.8			94.8	98.4	106.6	113.5	ft												
			11,020	10,540	9,570	8,860	lb												
106.6			91.9	98.4	105.3	ft													
			11,020	10,140	9,350	lb													
98.4			90.9	97.1	ft														
			11,020	10,190	lb														



MECANISMOS

Mechanisms / Mécanismes / Antriebe / Meccanismi / Механизмы

ES3-18-12

1.080 ft

29 hp

		I	II	III
III	ft/min	32	126	252
	lb	5,510	5,510	2,860

		I	II	III
II	ft/min	16	63	126
	lb	11,020	11,020	5,730

EFU2-18-12

1.080 ft






24 hp *

II	ft/min	131	249
	lb	2,200	2,420

I	ft/min	66	125
	lb	11,020	4,850

MECANISMOS

Mechanisms / Mécanismes / Antriebe / Meccanismi / Механизмы

	CS2-1.9 3 hp		CFU-2.2 3 hp *		GFU-5.5 2x 7.4 hp		TS2-5.5 2x 40 ft-lb	TRA-7.5 2x 55 ft-lb		TRA-7.5VC 2x 55 ft-lb *	
63 ft/min 189 ft/min		0 ⇔ 262 ft/min		0 ⇔ 0,7 rpm		78 ft/min		78 ft/min		5XR71	
						1XR31 3XR51		5XR71			

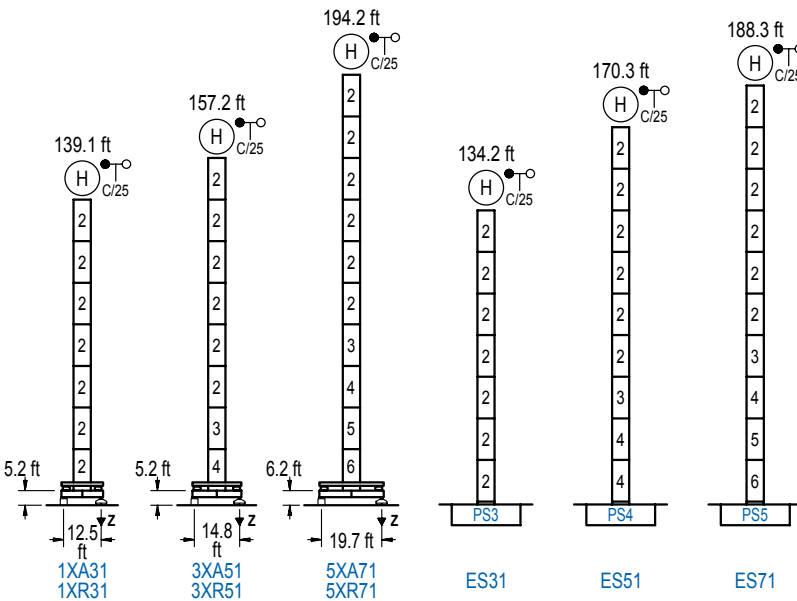
POTENCIA / POWER / PUISSANCE / LEISTUNG / POTENZA / МОЩНОСТЬ				Tensión de alimentación / Operating voltage / Tension de service / Betriebsspannung / Tensione di alimentazione / Напряжение источника питания	Generador / Generator / Générateur / Generator / Генератор
Elevación / Hoist / Levage / Hub / Sollevamento / Тип механизма (подъем)	Carro / Trolley / Chariot / Laufkatze / Carrelo / Грузовая тележка	Giro / Slewing / Rotation / Drehbewegung / Rotazione / Поворот	Traslación / Travel / Translation / Verfahrbewegung / Traslazione / Ход	480 V 3ph 60 Hz	115 kVA
ES3-18-12	CS2-1.9	(2x) GFU-5.5	(2x) TS2-5.5 (2x) TRA-7.5		65 kVA
EFU2-18-12	CFU-2.2				

Opcional / Optional / En option / Kaufoption / Opzionale / Опционально
*

ALTURAS BAJO GANCHO

Heights under hook / Hauteurs sous crochet / Hakenhöhen / Altezza sotto gancio / Высота под крюком

∅ 5.2 ft

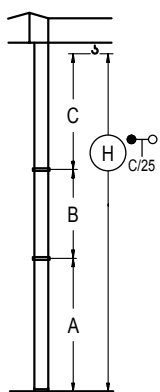


n°	Ref.	∅	h
2	S13	5.2	18.0
3	TS14	5.2	18.0
4	S14	5.2	18.0
5	TS15	5.2	18.0
6	S15	5.2	18.0
1x S13 = 1x S13M			
1x S15 = 1x S15M			

Z máx.	En servicio / In operation / En service / In Betrieb / In servizio / При работе	1XR31.. 159 kip 3XR51.. 152 kip 5XR71.. 163 kip
	Fuera de servicio / Out of service / Hors service / Ausser Betrieb / Fuori servizio / В стационарном состоянии	1XR31.. 185 kip 3XR51.. 205 kip 5XR71.. 243 kip

GRÚA ARRIOSTRADA

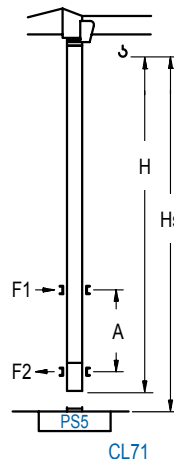
Braced crane / Grue à entretoisement / Abgespannter Kran / Gru ancorata / Нарастиваемый кран



	1XA31	3XA51	5XA71
A max	95.5	113.5	150.6
A min	59.4	59.4	96.5
B max	-	72.8	-
B min	-	54.1	-
C max	115.8	115.8	115.8
H max	211.3	283.5	229.3
	301.5	266.4	338.6
	ES31	ES51	ES71
A max	90.6	38.6	144.7
A min	54.5	72.5	90.6
B max	-	72.8	-
B min	-	54.1	-
C max	115.8	115.8	115.8
H max	206.4	278.5	242.5
	314.6	260.5	332.7

GRÚA TREPADORA

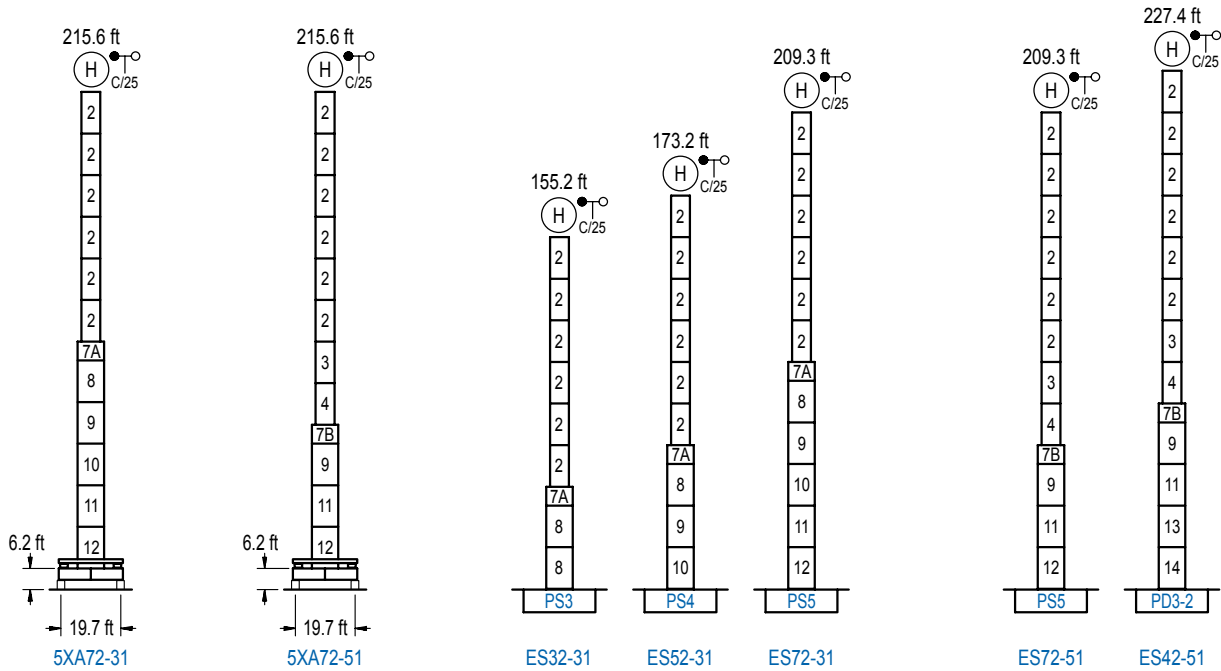
Internal climbing crane / Grue avec cage de télescopage intérieure / Kran mit klettern im Gebäude / Gru in rampante in cavedio / Кран с самоподъемом



∅	H	Hs < 1,310 ft	
		A max (ft)	A min (ft)
144.0 ft	S13J + 5x S13 + TS14 + TS15 + CLS15-1	55.1	36.1
126.0 ft	S13J + 4x S13 + TS14 + TS15 + CLS15-1	46.3	29.5
107.9 ft	S13J + 3x S13 + TS14 + TS15 + CLS15-1	37.4	23.0

n°	Ref.	∅	h
2	S13	5.2	18.0
3	TS14	5.2	18.0
5	TS15	5.2	18.0
23	CLS15-1	5.2	10.2
1x S13 = 1x S13M			

Otras zonas de viento, alturas superiores, arriostramientos o trepado interno consultar / Other wind zones, additional hook heights, tie frames or internal climbing on request / Autres zones de vent, des hauteurs supplémentaires, entretoisements ou grues avec cage de télescopage intérieure, sur demande / Andere Windzonen, weitere Hakenhöhen, Abspannungen zum Gebäude oder Klettern im Gebäude auf Anfrage / Per zone con velocità del vento particolari, altezze superiori, ancoraggi o rampante in cavedio, consultare il fabbricante / При других ветренных зонах, при большой высоте, привязках к зданию или наращивании крана внутри здания проконсультируйтесь с нами



n°	Ref.	∅	h	n°	Ref.	∅	h	n°	Ref.	∅	h
3	TS14	5.2	18.0	7B	TMS23/PMS4	6.6	1.0	9	TS24	6.6	18.0
4	S14	5.2	18.0					10	S24	6.6	18.0
5	TS15	5.2	18.0					11	TS25	6.6	18.0
6	S15	5.2	18.0					12	S25	6.6	18.0
1x S13 = 1x S13M								13 TD23A			
1x S15 = 1x S15M								14 D23			
								1x S25 = 1x S25M			

Otras zonas de viento o alturas superiores consultar / Other wind zones or additional hook heights on request / Autres zones de vent ou des hauteurs supplémentaires sur demande / Andere Windzonen oder weitere Hakenhöhen auf Anfrage / Per zone con velocità del vento particolari o altezze superiori consultare il fabbricante / При других ветренных зонах о при большой высоте проконсультируйтесь с нами



Construcciones Metálicas COMANSA S. A.

Tel.: (+34) 948 335 020 / Fax: (+34) 948 330 810 / E-mail: info@comansa.com
 Polígono Urbizkain, Crta. Aoiz N°1 31620 Huarte (Navarra)- SPAIN

DS.1650.01.IA 01/17 11LC132/11,020 lb

Reserva de modificaciones. Subject to modifications. Modifications réservées. Konstruktionsänderungen vorbehalten. Il Fabbricante si riserva la facoltà di apportare modifiche. Возможны изменения.