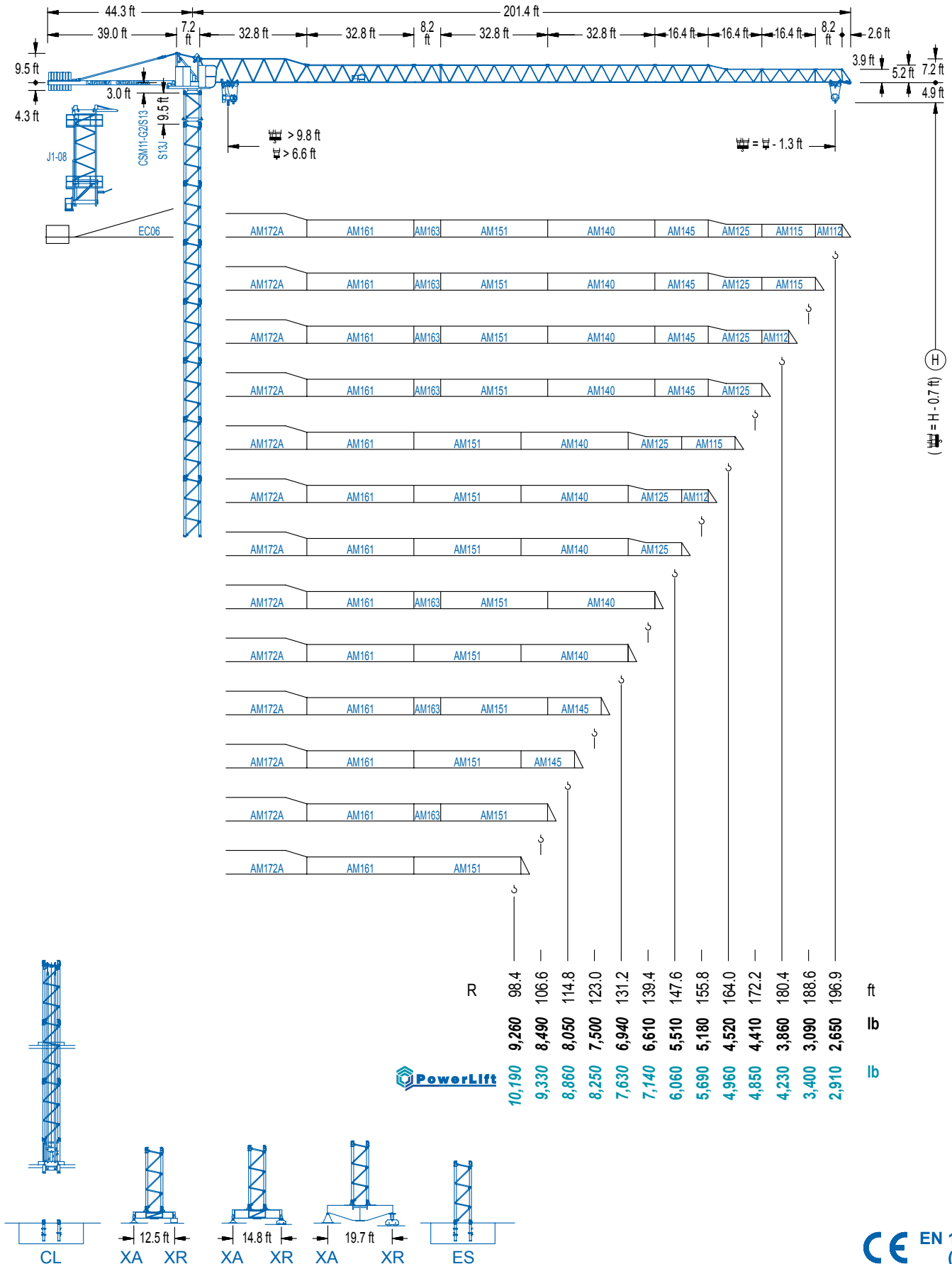


LC 1100

11 LC 132

13,230 lb



LC 1100

DIAGRAMA DE CARGAS

Load chart / Diagramme de charges / Lastdiagramm / Diagramma di carico / Диаграмма распределения нагрузки

R (ft)	13,230					11,930					10,820					9,900					9,260					
196.9	47.9	55.8	65.6	75.5	83.7	93.2	98.4	106.6	114.8	123.0	131.2	139.4	147.6	155.8	164.0	172.2	180.4	188.6	196.9	ft						
	13,230	11,000	9,020	7,560	6,610	6,610	6,190	5,640	5,180	4,760	4,410	4,100	3,810	3,570	3,350	3,150	2,950	2,800	2,650	lb						
188.6	51.2	55.8	65.6	75.5	82.0	89.9	100.4	106.6	114.8	123.0	131.2	139.4	147.6	155.8	164.0	172.2	180.4	188.6		ft						
	13,230	11,970	9,830	8,290	7,450	6,610	6,610	6,150	5,640	5,200	4,830	4,500	4,190	3,920	3,680	3,460	3,260	3,090		lb						
180.4	58.4	65.6	75.5	82.0	91.9	98.4	102.4	114.5	123.0	131.2	139.4	147.6	155.8	164.0	172.2	180.4				ft						
	13,230	11,490	9,700	8,750	7,610	6,970	6,610	6,610	6,080	5,640	5,270	4,920	4,610	4,340	4,080	3,860				lb						
172.2	61.7	65.6	75.5	82.0	91.9	98.4	105.0	108.9	122.0	131.2	139.4	147.6	155.8	164.0	172.2					ft						
	13,230	12,320	10,430	9,440	8,200	7,520	6,920	6,610	6,610	6,080	5,670	5,290	4,960	4,670	4,410					lb						
164.0	60.0	65.6	75.5	82.0	91.9	98.4	105.6	118.4	123.0	131.2	139.4	147.6	155.8	164.0	172.2					ft						
	13,230	11,930	10,080	9,100	7,910	7,250	6,610	6,610	6,330	5,890	5,470	5,110	4,810	4,520						lb						
155.8		64.0	75.5	82.0	91.9	98.4	105.0	112.5	126.3	131.2	139.4	147.6	155.8	164.0	172.2					ft						
		13,230	10,850	9,810	8,530	7,830	7,230	6,610	6,610	6,330	5,910	5,510	5,180							lb						
147.6		63.6	75.5	82.0	91.9	98.4	105.0	112.2	126.0	131.2	139.4	147.6	155.8	164.0	172.2					ft						
		13,230	10,820	9,790	8,510	7,800	7,210	6,610	6,610	6,330	5,890	5,510								lb						
139.4			77.1	82.0	91.9	98.4	105.0	114.8	121.4	136.2	139.4									ft						
			13,230	12,320	10,760	9,920	9,170	8,200	7,650	6,610	6,610									lb						
131.2			76.4	82.0	91.9	98.4	105.0	114.8	121.4	129.9										ft						
			13,230	12,170	10,630	9,790	9,060	8,110	7,560	6,940										lb						
123.0			76.1	82.0	91.9	98.4	105.0	114.8	121.7											ft						
			13,230	12,100	10,580	9,720	8,990	8,050	7,500											lb						
114.8			75.1	82.0	91.9	98.4	105.0	113.5												ft						
			13,230	11,900	10,410	9,570	8,860	8,050												lb						
106.6			72.8	82.0	91.9	98.4	105.3													ft						
			13,230	11,460	10,010	9,220	8,490													lb						
98.4			71.9	82.0	91.9	97.1														ft						
			13,230	11,330	9,900	9,260														lb						

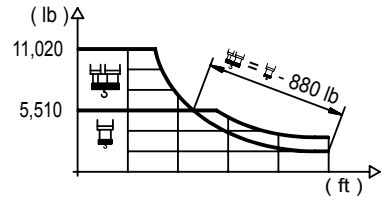
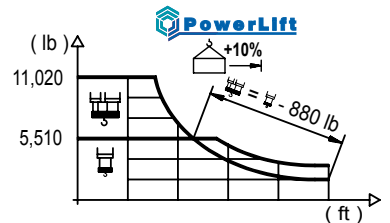


DIAGRAMA DE CARGAS POWERLIFT

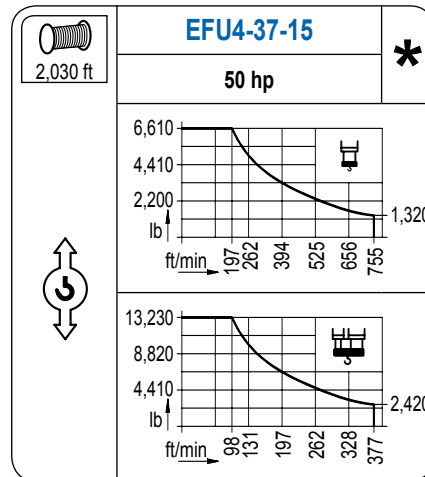
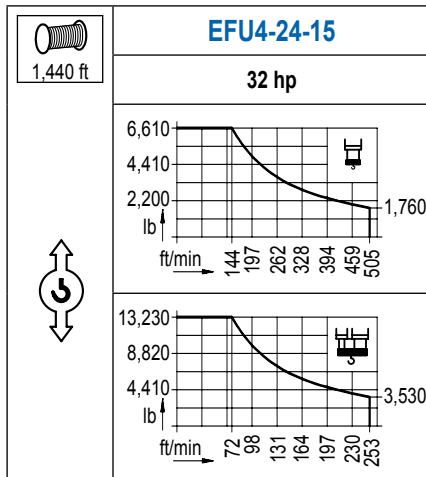
Load chart PowerLift / Diagramme de charges PowerLift / Lastdiagramm PowerLift / Diagramma di carico PowerLift / Диаграмма распределения нагрузки PowerLift

R (ft)	13,230					11,930					10,820					9,900					9,260					
196.9	50.2	59.1	65.6	75.5	82.0	87.9	100.1	106.6	114.8	123.0	131.2	139.4	147.6	155.8	164.0	172.2	180.4	188.6	196.9	ft						
	13,230	10,870	9,550	8,020	7,230	6,610	6,610	6,130	5,640	5,200	4,810	4,480	4,170	3,900	3,660	3,440	3,260	3,090	2,910	lb						
188.6	54.1	59.1	65.6	75.5	82.0	91.9	94.8	107.9	114.8	123.0	131.2	139.4	147.6	155.8	164.0	172.2	180.4	188.6		ft						
	13,230	11,900	10,490	8,840	7,960	6,900	6,610	6,170	5,690	5,270	4,920	4,590	4,300	4,030	3,790	3,590	3,400			lb						
180.4	61.7	65.6	75.5	82.0	91.9	98.4	106.6	108.6	123.4	131.2	139.4	147.6	155.8	164.0	172.2	180.4				ft						
	13,230	12,280	10,410	9,390	8,160	7,500	6,770	6,610	6,610	6,170	5,750	5,380	5,050	4,740	4,480	4,230				lb						
172.2		65.9	75.5	82.0	91.9	98.4	106.6	115.8	131.9	134.5	139.4	147.6	155.8	164.0	172.2					ft						
		13,230	11,240	10,190	8,860	8,130	7,360	6,610	6,610	6,460	6,220	5,820	5,470	5,140	4,850					lb						
164.0		64.3	75.5	82.0	91.9	98.4	106.6	112.9	128.0	131.2	139.4	147.6	155.8	164.0	172.2					ft						
		13,230	10,910	9,880	8,600	7,890	7,100	6,610	6,610	6,440	6,000	5,620	5,270	4,960						lb						
155.8		68.2	75.5	82.0	91.9	98.4	106.6	114.8	120.1	136.8	139.4	147.6	155.8	164.0	172.2					ft						
		13,230	11,730	10,630	9,260	8,510	7,690	7,010	6,610	6,610	6,460	6,060	5,690							lb						
147.6		68.2	75.5	82.0	91.9	98.4	106.6	114.8	120.1	136.8	139.4	147.6	155.8	164.0	172.2					ft						
		13,230	11,730	10,630	9,260	8,510	7,720	7,010	6,610	6,610	6,480	6,060								lb						
139.4			83.0	91.9	98.4	106.6	114.8	123.0	131.2	138.1										ft						
			13,230	11,750	10,820	9,830	8,990	8,250	7,630	7,140										lb						
131.2			82.3	91.9	98.4	106.6	114.8	123.0	129.9											ft						
			13,230	11,620	10,710	9,720	8,880	8,160	7,630											lb						
123.0			82.0	91.9	98.4	106.6	114.8	121.7												ft						
			13,230	11,570	10,670	9,700	8,860	8,250												lb						
114.8			81.0	91.9	98.4	106.6	113.5													ft						
			13,230	11,440	10,540	9,570	8,860													lb						
106.6			78.4	91.9	98.4	105.3														ft						
			13,230	11,000	10,120	9,330														lb						
98.4			77.8	91.9	97.1															ft						
			13,230	10,890	10,190															lb						



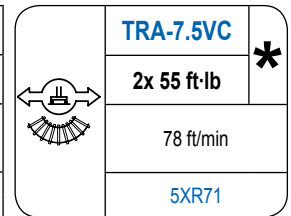
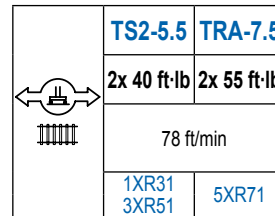
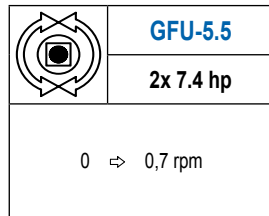
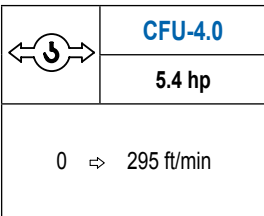
MECANISMOS

Mechanisms / Mécanismes / Antriebe / Meccanismi / Механизмы



MECANISMOS

Mechanisms / Mécanismes / Antriebe / Meccanismi / Механизмы



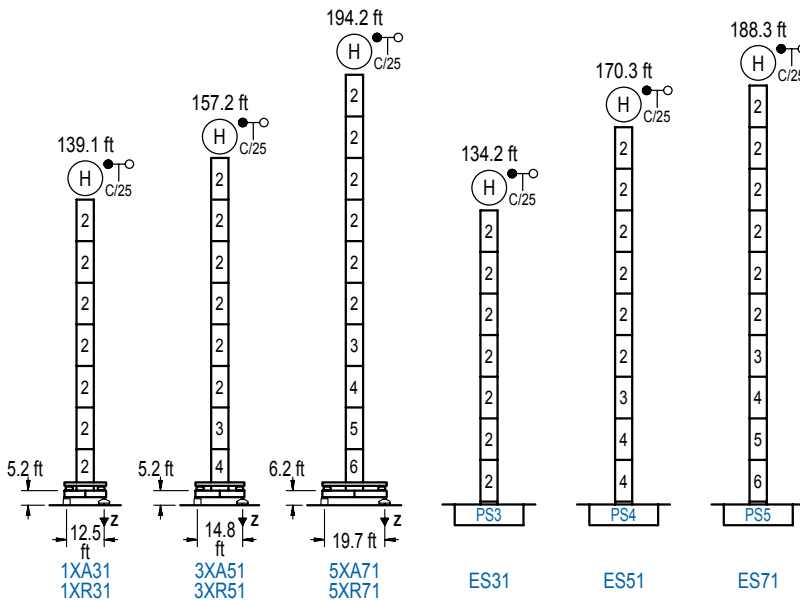
POTENCIA / POWER / PUISSANCE / LEISTUNG / POTENZA / МОЩНОСТЬ				Tensión de alimentación / Operating voltage / Tension de service / Betriebsspannung / Tensione di alimentazione / Напряжение источника питания	Generador / Generator / Générateur / Generator / Generatore / Генератор
Elevación / Hoist / Levage / Hub / Sollevamento / Тип механизма (подъем)	Carro / Trolley / Chariot / Laufkatze / Carrelo / Грузовая тележка	Giro / Slewing / Rotation / Drehbewegung / Rotazione / Поворот	Traslación / Travel / Translation / Verfahrbewegung / Traslazione / Ход		
EFU4-24-15	CFU-4.0	(2x) GFU-5.5	(2x) TS2-5.5	480 V 3ph 60 Hz	75 kVA
EFU4-37-15			(2x) TRA-7.5		105 kVA

Opcional / Optional / En option / Kaufoption / Opzionale / Опционально
*

ALTURAS BAJO GANCHO

Heights under hook / Hauteurs sous crochet / Hakenhöhen / Altezza sotto gancio / Высота под крюком

∅ 5.2 ft

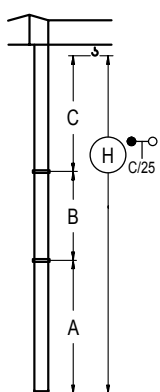


n°	Ref.	∅	h
2	S13	5.2	18.0
3	TS14	5.2	18.0
4	S14	5.2 </td <td>18.0</td>	18.0
5	TS15	5.2	18.0
6	S15	5.2	18.0
1x S13 = 1x S13M			
1x S15 = 1x S15M			

Z máx.	En servicio / In operation / En service / In Betrieb / In servizio / При работе	1XR31.. 159 kip 3XR51.. 152 kip 5XR71.. 163 kip
	Fuera de servicio / Out of service / Hors service / Ausser Betrieb / Fuori servizio / В стационарном состоянии	1XR31.. 185 kip 3XR51.. 205 kip 5XR71.. 243 kip

GRÚA ARRIOSTRADA

Braced crane / Grue à entretoisement / Abgespannter Kran / Gru ancorata / Нарастиваемый кран

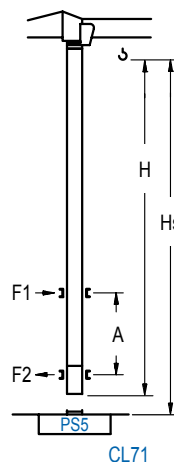


	1XA31	3XA51	5XA71
A max	95.5	113.5	150.6
A min	59.4	59.4	96.5
B max	-	72.8	-
B min	-	54.1	-
C max	115.8	115.8	115.8
H max	211.3	283.5	301.5

	ES31	ES51	ES71
A max	90.6	38.6	144.7
A min	54.5	72.5	90.6
B max	-	72.8	-
B min	-	54.1	-
C max	115.8	115.8	115.8
H max	206.4	278.5	314.6

GRÚA TREPADORA

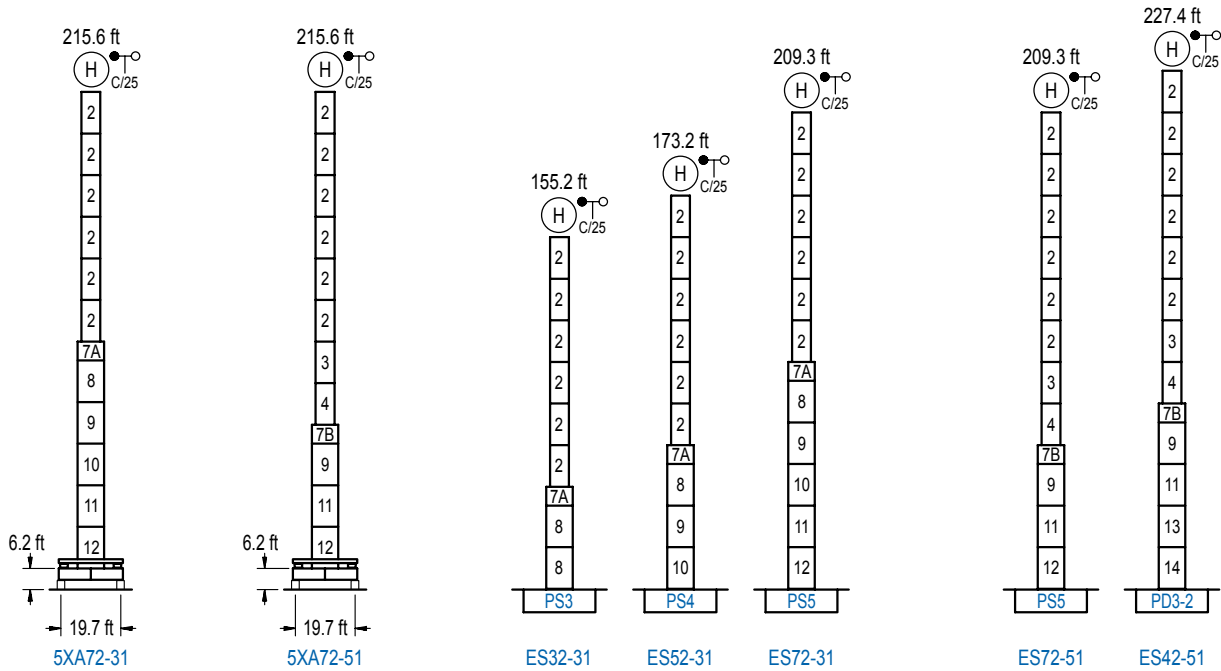
Internal climbing crane / Grue avec cage de télescopage intérieure / Kran mit klettern im Gebäude / Gru in rampante in cavedio / Кран с самоподъемом



∅	H	Hs < 1,310 ft	
		A max (ft)	A min (ft)
144.0 ft	S13J + 5x S13 + TS14 + TS15 + CLS15-1	55.1	36.1
126.0 ft	S13J + 4x S13 + TS14 + TS15 + CLS15-1	46.3	29.5
107.9 ft	S13J + 3x S13 + TS14 + TS15 + CLS15-1	37.4	23.0

n°	Ref.	∅	h
2	S13	5.2	18.0
3	TS14	5.2	18.0
5	TS15	5.2	18.0
23	CLS15-1	5.2	10.2
1x S13 = 1x S13M			

Otras zonas de viento, alturas superiores, arriostramientos o trepado interno consultar / Other wind zones, additional hook heights, tie frames or internal climbing on request / Autres zones de vent, des hauteurs supplémentaires, entretoisements ou grues avec cage de télescopage intérieure, sur demande / Andere Windzonen, weitere Hakenhöhen, Abspannungen zum Gebäude oder Klettern im Gebäude auf Anfrage / Per zone con velocità del vento particolari, altezze superiori, ancoraggi o rampante in cavedio, consultare il fabbricante / При других ветренных зонах, при большой высоте, привязках к зданию или наращивании крана внутри здания проконсультируйтесь с нами



n°	Ref.	∅	h	n°	Ref.	∅	h	n°	Ref.	∅	h
3	TS14	5.2	18.0	7B	TMS23/PMS4	6.6	1.0	9	TS24	6.6	18.0
4	S14	5.2	18.0					10	S24	6.6	18.0
5	TS15	5.2	18.0					11	TS25	6.6	18.0
6	S15	5.2	18.0					12	S25	6.6	18.0
1x S13 = 1x S13M								13 TD23A			
1x S15 = 1x S15M								14 D23			
								1x S25 = 1x S25M			

Otras zonas de viento o alturas superiores consultar / Other wind zones or additional hook heights on request / Autres zones de vent ou des hauteurs supplémentaires sur demande / Andere Windzonen oder weitere Hakenhöhen auf Anfrage / Per zone con velocità del vento particolari o altezze superiori consultare il fabbricante / При других ветренных зонах о при большой высоте проконсультируйтесь с нами



Construcciones Metálicas COMANSA S. A.

Tel.: (+34) 948 335 020 / Fax: (+34) 948 330 810 / E-mail: info@comansa.com
 Polígono Urbizkain, Crta. Aoiz N°1 31620 Huarte (Navarra)- SPAIN

DS.1650.02.IA 01/17 11LC132/13,230 lb

Reserva de modificaciones. Subject to modifications. Modifications réservées. Konstruktionsänderungen vorbehalten. Il Fabbricante si riserva la facoltà di apportare modifiche. Возможны изменения.