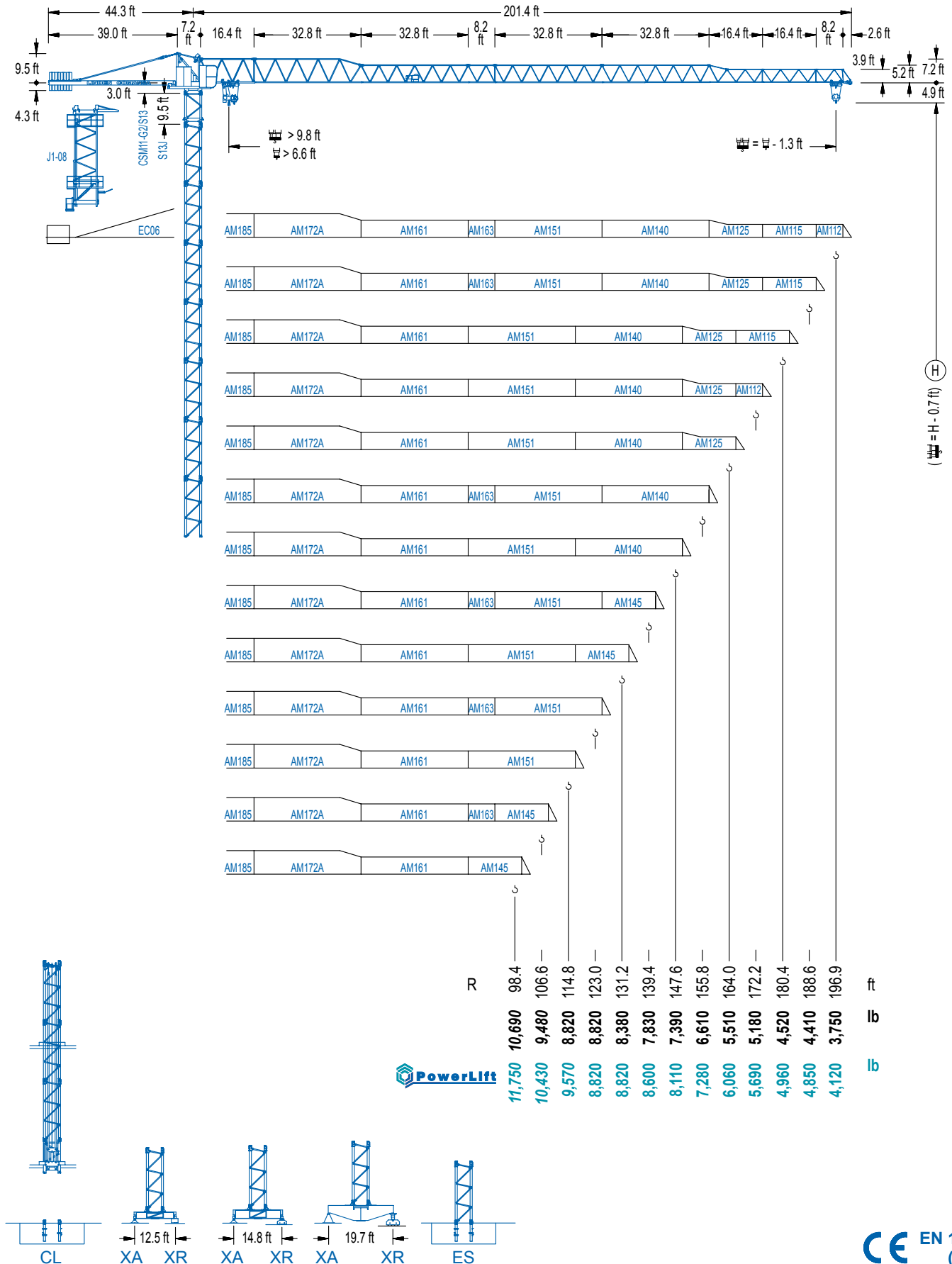


LC 1100

11 LC 150

17,640 lb



LC 1100

DIAGRAMA DE CARGAS

Load chart / Diagramme de charges / Lastdiagramm / Diagramma di carico / Диаграмма распределения нагрузки

R (ft)	11					13					15					17					19				
196.9	48.6	65.6	75.5	86.9	94.5	98.4	106.6	114.8	123.0	131.2	139.4	147.6	155.8	164.0	172.2	180.4	188.6	196.9	ft						
	17,640	12,370	10,470	8,820	8,820	8,420	7,690	7,080	6,550	6,080	5,670	5,290	4,960	4,670	4,410	4,170	3,950	3,750	lb						
188.6	52.8	65.6	75.5	82.0	94.8	103.3	106.6	114.8	123.0	131.2	139.4	147.6	155.8	164.0	172.2	180.4	188.6	ft							
	17,640	13,690	11,620	10,520	8,820	8,820	8,530	7,850	7,250	6,750	6,280	5,890	5,530	5,200	4,920	4,650	4,410	lb							
180.4	51.5	65.6	75.5	82.0	92.5	101.0	106.6	114.8	123.0	131.2	139.4	147.6	155.8	164.0	172.2	180.4	ft								
	17,640	13,320	11,290	10,210	8,820	8,820	8,290	7,630	7,050	6,570	6,110	5,730	5,380	5,070	4,780	4,520	lb								
172.2	55.1	65.6	75.5	82.0	91.9	99.1	107.9	114.8	123.0	131.2	139.4	147.6	155.8	164.0	172.2	ft									
	17,640	14,370	12,210	11,070	9,660	8,820	8,820	8,250	7,630	7,100	6,610	6,190	5,820	5,490	5,180	lb									
164.0	55.1	65.6	75.5	82.0	91.9	99.1	108.6	114.8	123.0	131.2	139.4	147.6	155.8	164.0	ft										
	17,640	14,440	12,260	11,090	9,680	8,550	8,820	8,290	7,670	7,120	6,660	6,220	5,840	5,510	lb										
155.8	61.0	75.5	82.0	91.9	98.4	109.9	120.7	123.0	131.2	139.4	147.6	155.8	ft												
	17,640	13,820	12,540	10,980	10,100	8,820	8,820	8,640	8,020	7,500	7,030	6,610	lb												
147.6	63.6	75.5	82.0	91.9	98.4	106.6	114.8	126.0	131.2	139.4	147.6	ft													
	17,640	14,510	13,160	11,530	10,630	9,630	8,820	8,820	8,420	7,870	7,390	lb													
139.4	63.3	75.5	82.0	91.9	98.4	106.6	114.2	125.3	131.2	139.4	ft														
	17,640	14,400	13,070	11,440	10,540	9,570	8,820	8,820	8,380	7,830	lb														
131.2	63.3	75.5	82.0	91.9	98.4	106.6	113.8	125.3	131.2	ft															
	17,640	14,370	13,050	11,420	10,520	9,550	8,820	8,820	8,380	lb															
123.0	62.0	75.5	82.0	91.9	98.4	105.0	111.5	123.0	ft																
	17,640	14,070	12,760	11,160	10,270	9,500	8,820	8,820	lb																
114.8	62.3	75.5	82.0	91.9	98.4	112.2	114.8	ft																	
	17,640	14,130	12,830	11,220	10,340	8,820	8,820	lb																	
106.6	62.0	75.5	82.0	91.9	98.4	105.3	ft																		
	17,640	14,040	12,740	11,160	10,270	9,480	lb																		
98.4	63.0	75.5	82.0	91.9	97.1	ft																			
	17,640	14,350	13,030	11,400	10,690	lb																			

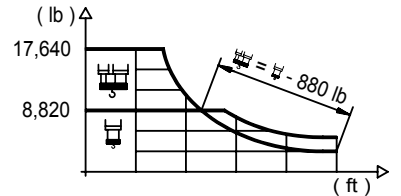
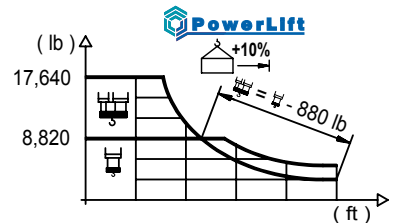


DIAGRAMA DE CARGAS POWERLIFT

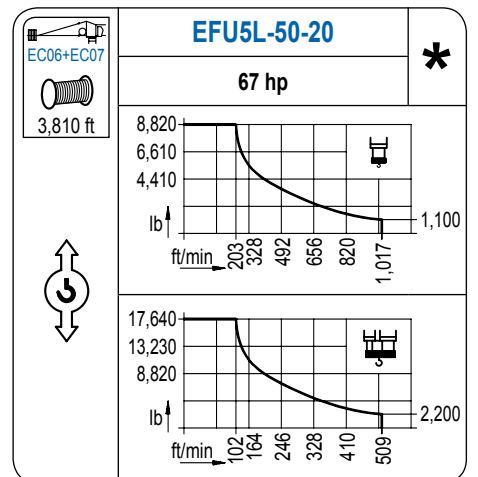
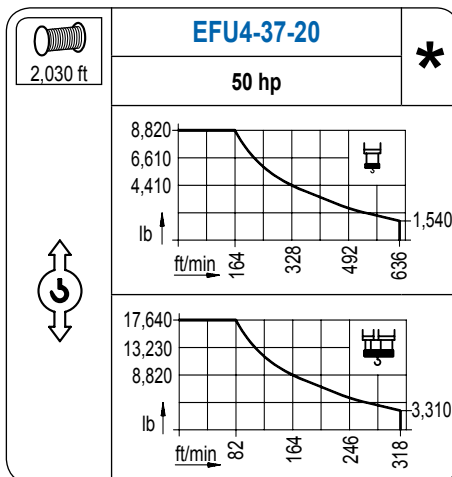
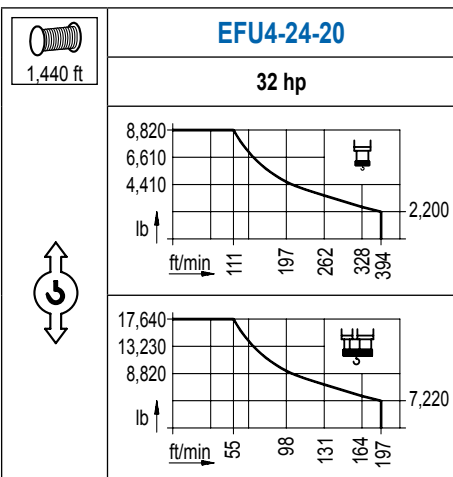
Load chart PowerLift / Diagramme de charges PowerLift / Lastdiagramm PowerLift / Diagramma di carico PowerLift / Диаграмма распределения нагрузки PowerLift

R (ft)	11					13					15					17					19				
196.9	51.2	65.6	75.5	82.0	92.2	102.0	106.6	114.8	123.0	131.2	139.4	147.6	155.8	164.0	172.2	180.4	188.6	196.9	ft						
	17,640	13,250	11,240	10,160	8,820	8,820	8,400	7,720	7,140	6,640	6,190	5,800	5,450	5,110	4,850	4,590	4,340	4,120	lb						
188.6	56.1	65.6	75.5	82.0	91.9	101.0	111.9	114.8	123.0	131.2	139.4	147.6	155.8	164.0	172.2	180.4	188.6	ft							
	17,640	14,750	12,520	11,350	9,900	8,820	8,820	8,580	7,940	7,390	6,880	6,460	6,060	5,710	5,400	5,110	4,850	lb							
180.4	54.8	65.6	75.5	82.0	91.9	98.4	109.3	114.8	123.0	131.2	139.4	147.6	155.8	164.0	172.2	180.4	ft								
	17,640	14,310	12,150	11,000	9,610	8,820	8,820	8,330	7,720	7,160	6,700	6,260	5,890	5,560	5,250	4,960	lb								
172.2	58.7	65.6	75.5	82.0	91.9	98.4	105.6	117.1	123.0	131.2	139.4	147.6	155.8	164.0	172.2	ft									
	17,640	15,500	13,180	11,950	10,450	9,610	8,820	8,820	8,330	7,760	7,250	6,790	6,390	6,020	5,690	lb									
164.0	59.1	65.6	75.5	82.0	91.9	98.4	106.3	117.8	123.0	131.2	139.4	147.6	155.8	164.0	ft										
	17,640	15,610	13,270	12,040	10,520	9,680	8,820	8,820	8,400	7,800	7,300	6,830	6,440	6,060	lb										
155.8	65.6	75.5	82.0	91.9	98.4	106.6	114.8	131.2	139.4	147.6	155.8	ft													
	17,640	15,040	13,650	11,950	11,020	10,010	9,150	8,820	8,820	8,250	7,740	7,280	lb												
147.6	68.6	75.5	82.0	91.9	98.4	106.6	114.8	123.4	137.1	139.4	147.6	ft													
	17,640	15,780	14,330	12,570	11,570	10,540	9,630	8,820	8,820	8,640	8,110	lb													
139.4	67.9	75.5	82.0	91.9	98.4	106.6	114.8	122.7	136.2	139.4	ft														
	17,640	15,670	14,240	12,480	11,510	10,470	9,570	8,820	8,820	8,600	lb														
131.2	68.2	75.5	82.0	91.9	98.4	106.6	114.8	123.0	131.2	ft															
	17,640	15,700	14,260	12,500	11,530	10,470	9,590	8,820	8,820	lb															
123.0	66.9	75.5	82.0	91.9	98.4	106.6	120.7	123.0	ft																
	17,640	15,370	13,960	12,240	11,270	10,250	8,820	8,820	lb																
114.8	67.3	75.5	82.0	91.9	98.4	106.6	113.5	ft																	
	17,640	15,450	14,040	12,300	11,350	10,320	9,570	lb																	
106.6	66.9	75.5	82.0	91.9	98.4	105.3	ft																		
	17,640	15,410	14,000	12,260	11,310	10,430	lb																		
98.4	68.2	75.5	82.0	91.9	97.1	ft																			
	17,640	15,740	14,310	12,540	11,750	lb																			



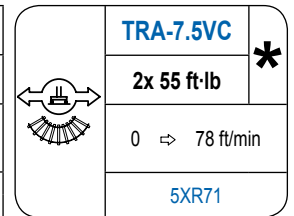
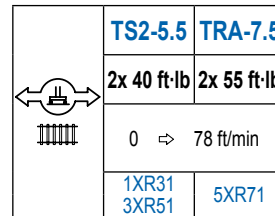
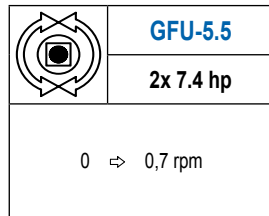
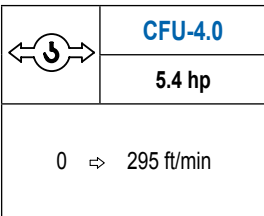
MECANISMOS

Mechanisms / Mécanismes / Antriebe / Meccanismi / Механизмы



MECANISMOS

Mechanisms / Mécanismes / Antriebe / Meccanismi / Механизмы



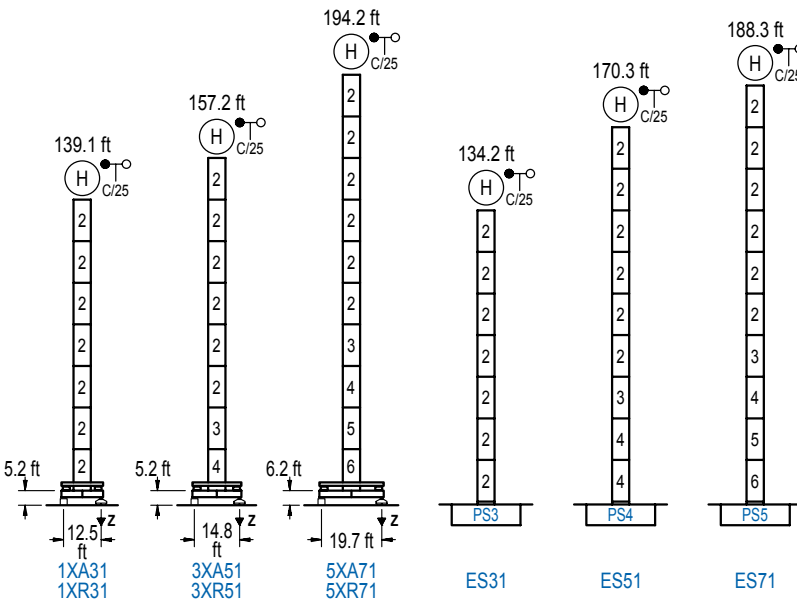
POTENCIA / POWER / PUISSANCE / LEISTUNG / POTENZA / МОЩНОСТЬ				Tensión de alimentación / Operating voltage / Tension de service / Betriebsspannung / Tensione di alimentazione / Напряжение источника питания	Generador / Generator / Générateur / Generator / Generatore / Генератор
Elevación / Hoist / Levage / Hub / Sollevamento / Тип механизма (подъем)	Carro / Trolley / Chariot / Laufkatze / Carrello / Грузовая тележка	Giro / Slewing / Rotation / Drehbewegung / Rotazione / Поворот	Traslación / Travel / Translation / Verfahrbewegung / Traslazione / Ход		
EFU4-24-20	CFU-4.0	(2x) GFU-5.5	(2x) TS2-5.5	480 V 3ph 60 Hz	75 kVA
EFU4-37-20			(2x) TRA-7.5		105 kVA
EFU5L-50-20					125 kVA

Optional / Optional / En option / Kaufoption / Opzionale / Опционально
*

ALTURAS BAJO GANCHO

Heights under hook / Hauteurs sous crochet / Hakenhöhen / Altezza sotto gancio / Высота под крюком

∅ 5.2 ft

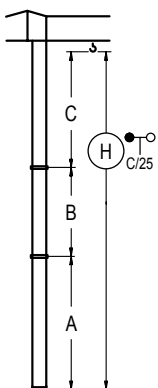


n°	Ref.	∅	h
2	S13	5.2	18.0
3	TS14	5.2	18.0
4	S14	5.2	18.0
5	TS15	5.2	18.0
6	S15	5.2	18.0

Z máx.	En servicio / In operation / En service / In Betrieb / In servizio / При работе	1XR31.. 161 kip 3XR51.. 154 kip 5XR71.. 157 kip
	Fuera de servicio / Out of service / Hors service / Ausser Betrieb / Fuori servizio / В стационарном состоянии	1XR31.. 157 kip 3XR51.. 174 kip 5XR71.. 240 kip

GRÚA ARRIOSTRADA

Braced crane / Grue à entretoisement / Abgespannter Kran / Gru ancorata / Нарастиваемый кран

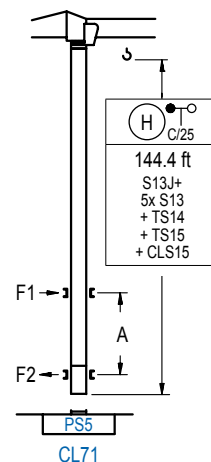


	1XA31	3XA51	5XA71
A max	95.5	113.5	150.6
B max	-	72.2	-
C max	115.8	115.8	115.8
H max	211.3	283.5	338.6

	ES31	ES51	ES71
A max	90.6	126.6	144.7
B max	-	72.2	-
C max	115.8	115.8	115.8
H max	206.4	278.5	332.7

GRÚA TREPADORA

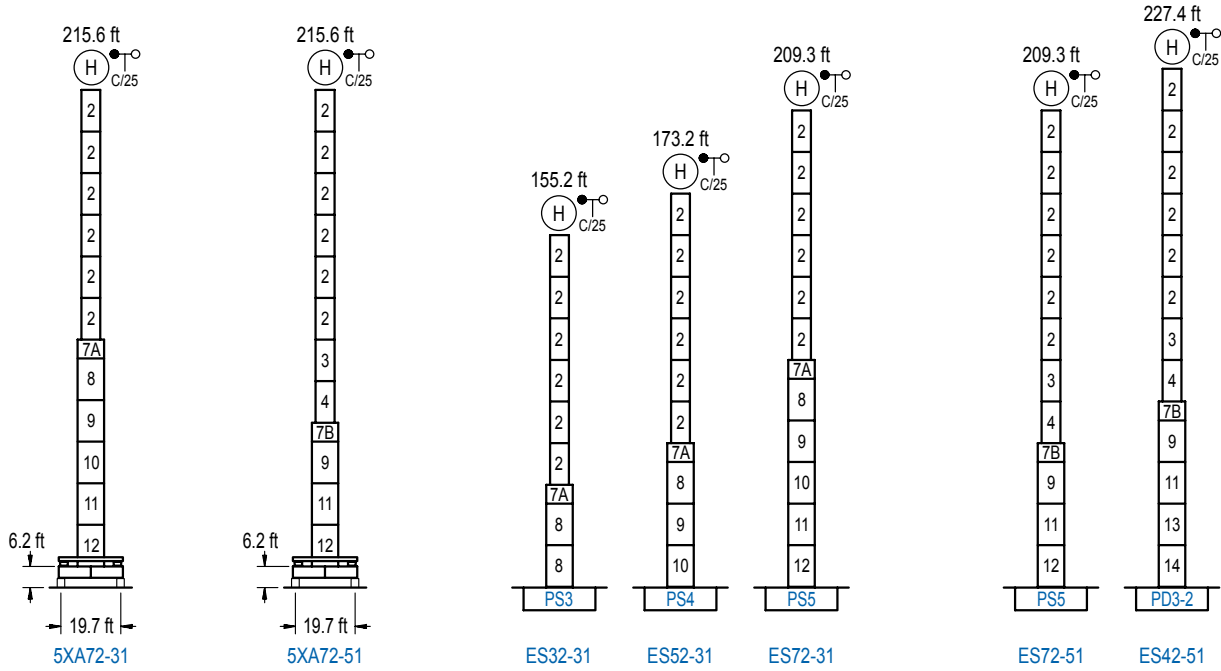
Internal climbing crane / Grue avec cage de télescopage intérieure / Kran mit klettern im Gebäude / Gru in rampante in cavedio / Кран с самоподъемом



n°	Ref.	∅	h
2	S13	5.2	18.0
3	TS14	5.2	18.0
5	TS15	5.2	18.0
23	CLS15	5.2	10.2

Otras zonas de viento, alturas superiores, arriostramientos o trepado interno consultar / Other wind zones, additional hook heights, tie frames or internal climbing on request / Autres zones de vent, des hauteurs supplémentaires, entretoisements ou grues avec cage de télescopage intérieure, sur demande / Andere Windzonen, weitere Hakenhöhen, Abspannungen zum Gebäude oder Klettern im Gebäude auf Anfrage / Per zone con velocità del vento particolari, altezze superiori, ancoraggi o rampante in cavedio, consultare il fabbricante / При других ветренных зонах, при большой высоте, привязках к зданию или наращивании крана внутри здания проконсультируйтесь с нами

LC 1100



n°	Ref.	∅	h	n°	Ref.	∅	h	n°	Ref.	∅	h
2	S13	5.2	18.0	7A	TMS23/PMS3	6.6	3.3	11	TS25	6.6	18.0
3	TS14	5.2	18.0	7B	TMS23/PMS4	6.6	3.3	12	S25	6.6	18.0
4	S14	5.2	18.0	8	S23	6.6	18.0	13	TD23A	6.6	18.0
5	TS15	5.2	18.0	9	TS24	6.6	18.0	14	D23	6.6	18.0
6	S15	5.2	18.0	10	S24	6.6	18.0				

Otras zonas de viento o alturas superiores consultar / Other wind zones or additional hook heights on request / Autres zones de vent ou des hauteurs supplémentaires sur demande / Andere Windzonen oder weitere Hakenhöhen auf Anfrage / Per zone con velocità del vento particolari o altezze superiori consultare il fabbricante / При других ветренных зонах о при большой высоте проконсультируйтесь с нами



Construcciones Metálicas COMANSA S. A.

Tel.: (34) 948 335 020 / Fax: (34) 948 330 810 / e-mail: info@comansa.com
Polígono Urbizkain E-31620 HUARTE-PAMPLONA.- SPAIN

DS.1307.13.IA 02/14 **11LC150/17,640 lb**