

R	ft	lb	lb
98.4	5,510	6,060	
114.8	5,510	5,510	
123.0	4,960	5,450	
131.2	4,630	5,090	
139.4	4,190	4,610	
147.6	3,750	4,120	
155.8	3,310	3,640	
164.0	3,090	3,400	
172.2	2,650	2,910	

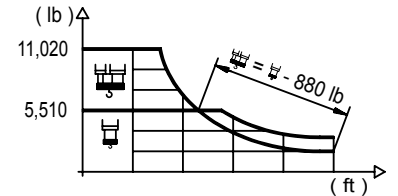


LC 1100

## DIAGRAMA DE CARGAS

Load chart / Diagramme de charges / Lastdiagramm / Diagramma di carico / Диаграмма распределения нагрузки

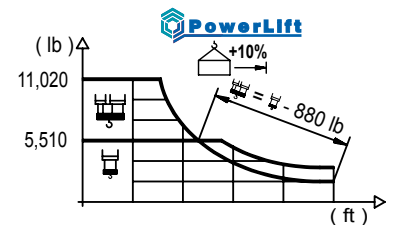
R (ft)																		
172.2	48.9 11,020	52.5 10,100	59.1 8,730	65.6 7,630	72.2 6,750	82.0 5,710	84.0 5,510	95.5 5,510	105.0 4,920	114.8 4,410	123.0 4,060	131.2 3,750	139.4 3,480	147.6 3,240	155.8 3,020	164.0 2,820	172.2 2,650	ft lb
164.0		52.2 11,020	59.1 9,460	65.6 8,290	72.2 7,340	82.0 6,220	89.9 5,510	102.0 5,510	105.0 5,340	114.8 4,810	123.0 4,410	131.2 4,080	139.4 3,790	147.6 3,530	155.8 3,280	164.0 3,090	ft lb	
155.8		52.2 11,020	59.1 9,480	65.6 8,310	72.2 7,360	82.0 6,240	89.9 5,510	102.4 5,510	105.0 5,360	114.8 4,810	123.0 4,430	131.2 4,100	139.4 3,790	147.6 3,550	155.8 3,310	ft lb		
147.6		54.5 11,020	59.1 9,990	65.6 8,770	72.2 7,780	82.0 6,590	91.9 5,690	93.8 5,510	107.0 5,510	114.8 5,070	123.0 4,670	131.2 4,320	139.4 4,010	147.6 3,750	ft lb			
139.4			56.1 11,020	65.6 9,100	72.2 8,090	82.0 6,880	91.9 5,930	97.1 5,510	110.6 5,510	114.8 5,290	123.0 4,870	131.2 4,500	139.4 4,190	ft lb				
131.2			57.4 11,020	65.6 9,350	72.2 8,290	82.0 7,050	91.9 6,080	95.1 5,800	99.1 5,510	113.2 5,510	123.0 5,000	131.2 4,630	ft lb					
123.0			56.8 11,020	65.6 9,260	72.2 8,220	82.0 6,990	91.9 6,020	95.1 5,750	98.1 5,510	112.5 5,510	123.0 4,960	ft lb						
114.8			57.7 11,020	65.6 9,460	72.2 8,400	82.0 7,140	91.9 6,170	95.1 5,890	100.1 5,510	114.8 5,510	ft lb							
98.4			56.4 11,020	65.6 9,130	72.2 8,090	82.0 6,880	91.9 5,930	97.1 5,510	ft lb									



## DIAGRAMA DE CARGAS POWERLIFT

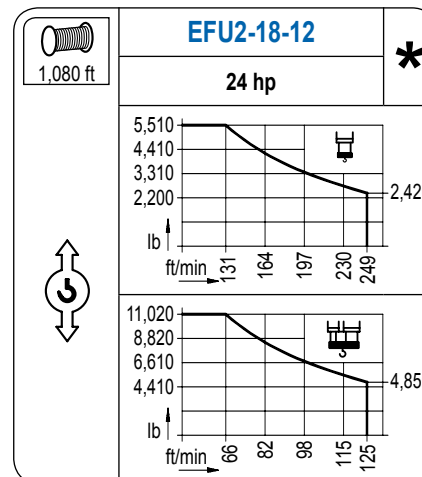
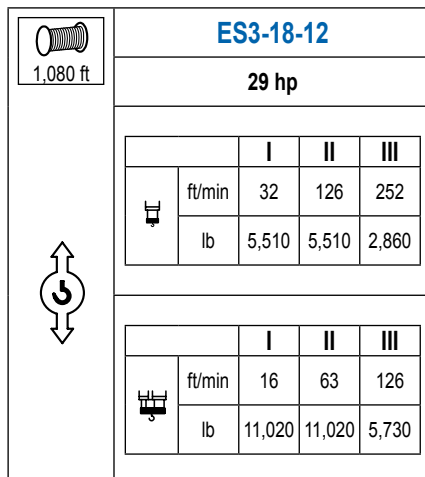
Load chart PowerLift / Diagramme de charges PowerLift / Lastdiagramm PowerLift / Diagramma di carico PowerLift / Диаграмма распределения нагрузки PowerLift

R (ft)																	
172.2	51.2 11,020	59.1 9,260	65.6 8,110	72.2 7,190	82.0 6,080	88.3 5,510	102.4 5,510	105.0 5,360	114.8 4,810	123.0 4,430	131.2 4,100	139.4 3,790	147.6 3,550	155.8 3,310	164.0 3,110	172.2 2,910	ft lb
164.0	54.8 11,020	59.1 10,100	65.6 8,860	72.2 7,870	82.0 6,680	88.6 6,040	94.8 5,510	109.9 5,510	114.8 5,250	123.0 4,830	131.2 4,480	139.4 4,140	147.6 3,880	155.8 3,620	164.0 3,400	ft lb	
155.8	52.5 11,020	59.1 10,140	65.6 8,910	72.2 7,890	82.0 6,700	88.6 6,060	95.1 5,510	110.6 5,510	114.8 5,270	123.0 4,850	131.2 4,500	139.4 4,170	147.6 3,880	155.8 3,640	ft lb		
147.6		57.7 11,020	65.6 9,440	72.2 8,380	82.0 7,120	88.6 6,440	98.4 5,600	99.7 5,510	115.8 5,510	123.0 5,140	131.2 4,760	139.4 4,410	147.6 4,120	ft lb			
139.4		59.7 11,020	65.6 9,830	72.2 8,730	82.0 7,450	88.6 6,750	98.4 5,860	103.0 5,510	119.8 5,510	123.0 5,340	131.2 4,960	139.4 4,610	ft lb				
131.2		61.0 11,020	65.6 10,100	72.2 8,990	82.0 7,670	88.6 6,940	98.4 6,060	105.0 5,560	105.6 5,510	122.7 5,510	131.2 5,090	ft lb					
123.0		60.7 11,020	65.6 10,010	72.2 8,910	82.0 7,580	88.6 6,880	98.4 6,000	104.7 5,510	121.7 5,510	123.0 5,450	ft lb						
114.8		62.0 11,020	65.6 10,270	72.2 9,150	82.0 7,800	88.6 7,080	98.4 6,170	107.0 5,510	114.8 5,510	ft lb							
98.4		60.4 11,020	65.6 9,960	72.2 8,860	82.0 7,540	88.6 6,830	97.1 6,060	ft lb									



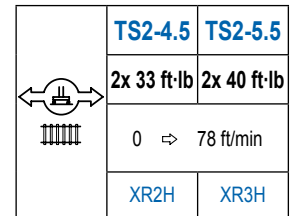
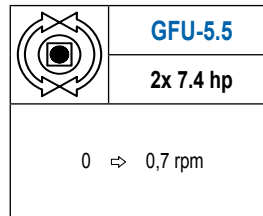
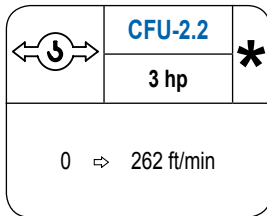
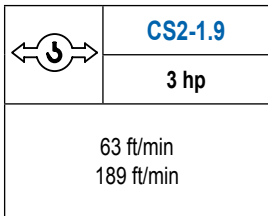
## MECANISMOS

Mechanisms / Mécanismes / Antriebe / Meccanismi / Механизмы



## MECANISMOS

Mechanisms / Mécanismes / Antriebe / Meccanismi / Механизмы



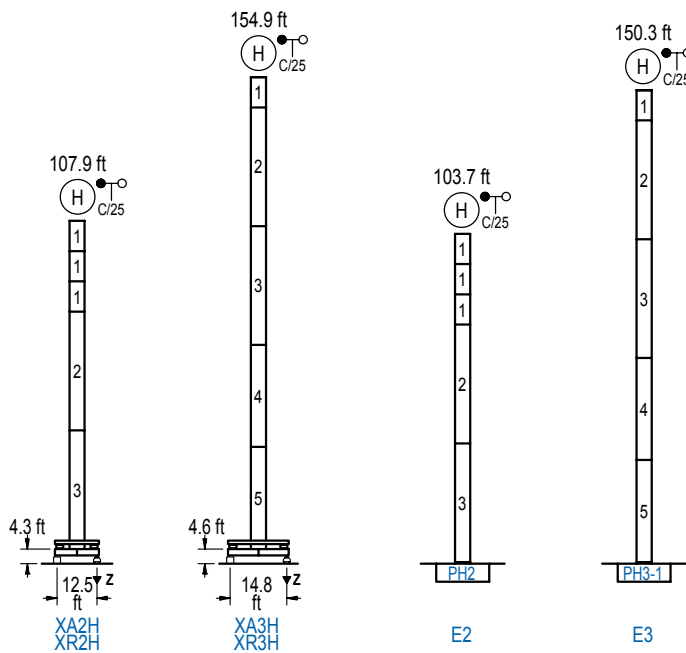
POTENCIA / POWER / PUISSANCE / LEISTUNG / POTENZA / МОЩНОСТЬ				Tensión de alimentación / Operating voltage / Tension de service / Betriebsspannung / Tensione di alimentazione / Напряжение источника питания	Generador / Generator / Générateur / Generator / Generatore / Генератор
Elevación / Hoist / Levage / Hub / Sollevamento / Тип механизма (подъем)	Carro / Trolley / Chariot / Laufkatze / Carrello / Грузовая тележка	Giro / Slewing / Rotation / Drehbewegung / Rotazione / Поворот	Traslación / Travel / Translation / Verfahrbewegung / Traslazione / Ход	480 V 3ph 60 Hz	115 kVA
ES3-18-12	CS2-1.9	(2x) GFU-5.5	(2x) TS2-4.5		
EFU2-18-12	CFU-2.2		(2x) TS2-5.5		65 kVA



## ALTURAS BAJO GANCHO

Heights under hook / Hauteurs sous crochet / Hakenhöhen / Altezza sotto gancio / Высота под крюком

∅ 3.9 ft



n°	Ref.	∅	h
1	MH121	3.9	9.8
2	MH124-1	3.9	38.7
3	MH124A	3.9	38.7
4	MT123A	3.9	33.1
5	MT123	3.9	33.1

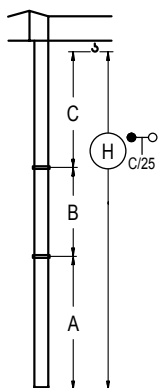
MH124-1 = 4x MH121 - 0.7 ft

	H = H + 0.7 ft
	H = H
	H = H
	H = H - 0.7 ft

Z máx.	En servicio / In operation / En service / In Betrieb / In servizio / При работе	XR2H..... 95 kip XR3H..... 112 kip
	Fuera de servicio / Out of service / Hors service / Ausser Betrieb / Fuori servizio / В стационарном состоянии	XR2H..... 93 kip XR3H... 165 kip

## GRÚA ARRIOSTRADA

Braced crane / Grue à entretoisement / Abgespannter Kran / Gru ancorata / Нарастиваемый кран

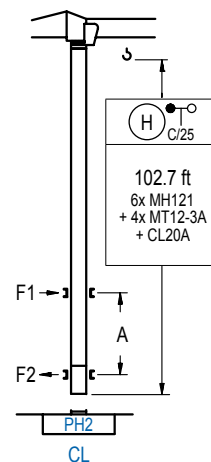


	XA2H	XA3H
A max	91.5	139.1
B max	- 59.1	- 59.1
C max	79.1 79.1	79.1 79.1
H max	170.3 229.3	218.2 277.2

	E2	E3
A max	87.3	134.5
B max	- 59.1	- 59.1
C max	79.1 79.1	79.1 79.1
H max	166.3 225.4	213.6 272.6

## GRÚA TREPADORA

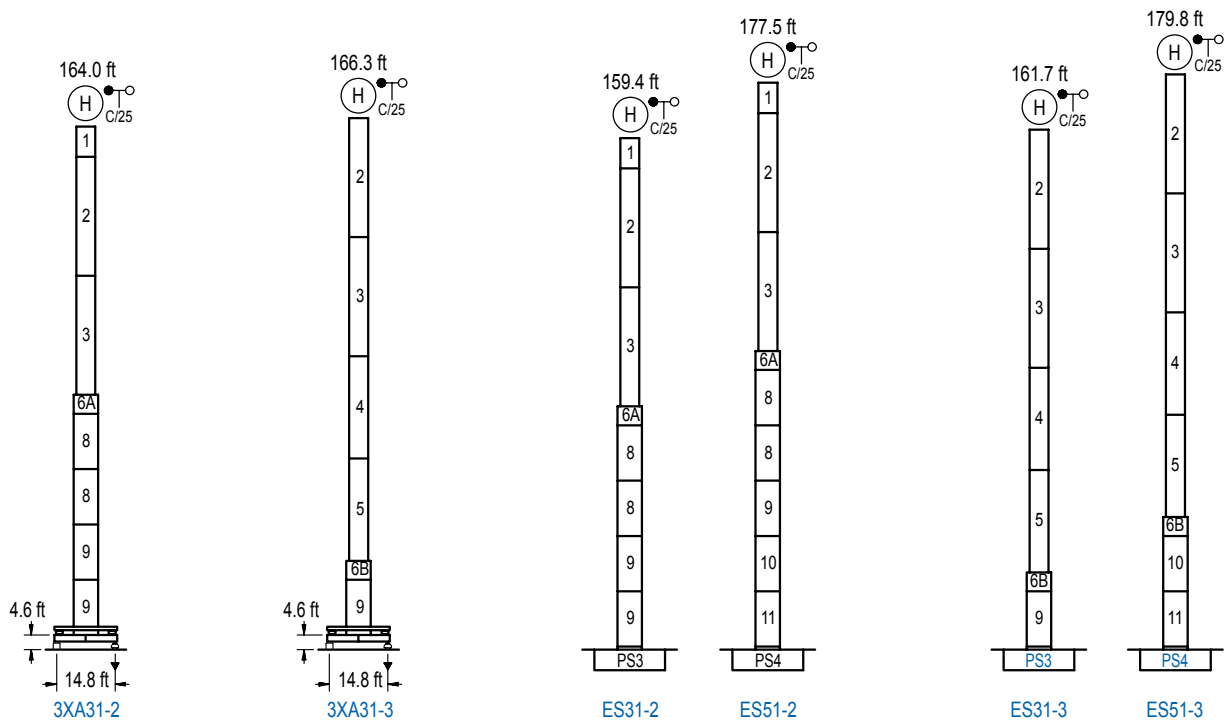
Internal climbing crane / Grue avec cage de télescopage intérieure / Kran mit klettern im Gebäude / Gru in rampante in cavedio / Кран с самоподъемом



n°	Ref.	∅	h
1	MH121	3.9	9.8
19	MT12-3A	3.9	9.5
20	CL20A	3.9	8.5

Otras zonas de viento, alturas superiores, arriostramientos o trepado interno consultar / Other wind zones, additional hook heights, tie frames or internal climbing on request / Autres zones de vent, des hauteurs supplémentaires, entretoisements ou grues avec cage de télescopage intérieure, sur demande / Andere Windzonen, weitere Hakenhöhen, Abspannungen zum Gebäude oder Klettern im Gebäude auf Anfrage / Per zone con velocità del vento particolari, altezze superiori, ancoraggi o rampante in cavedio, consultare il fabbricante / При других ветренных зонах, при большой высоте, привязках к зданию или наращивании крана внутри здания проконсультируйтесь с нами

LC 1100



n°	Ref.	∅	h	n°	Ref.	∅	h	n°	Ref.	∅	h
1	MH121	3.9	9.8	6A	TMS13/PMH12	5.2	3.3	8	S12	5.2	18.0
2	MH124-1	3.9	38.7	6B	TMS13/PMH13	5.2	3.3	9	S13	5.2	18.0
3	MH124A	3.9	38.7					10	TS14	5.2	18.0
4	MT123A	3.9	33.1					11	S14	5.2	18.0
5	MT123	3.9	33.1					12	TS15	5.2	18.0
								13	S15	5.2	18.0
MH124-1 = 4x MH121 - 0.7 ft											

Otras zonas de viento o alturas superiores consultar / Other wind zones or additional hook heights on request / Autres zones de vent ou des hauteurs supplémentaires sur demande / Andere Windzonen oder weitere Hakenhöhen auf Anfrage / Per zone con velocità del vento particolari o altezze superiori consultare il fabbricante / При других ветренных зонах о при большой высоте проконсультируйтесь с нами



Construcciones Metálicas COMANSA S. A.

Tel.: (34) 948 335 020 / Fax: (34) 948 330 810 / e-mail: info@comansa.com  
Polígono Urbizkain E-31620 HUARTE-PAMPLONA.- SPAIN