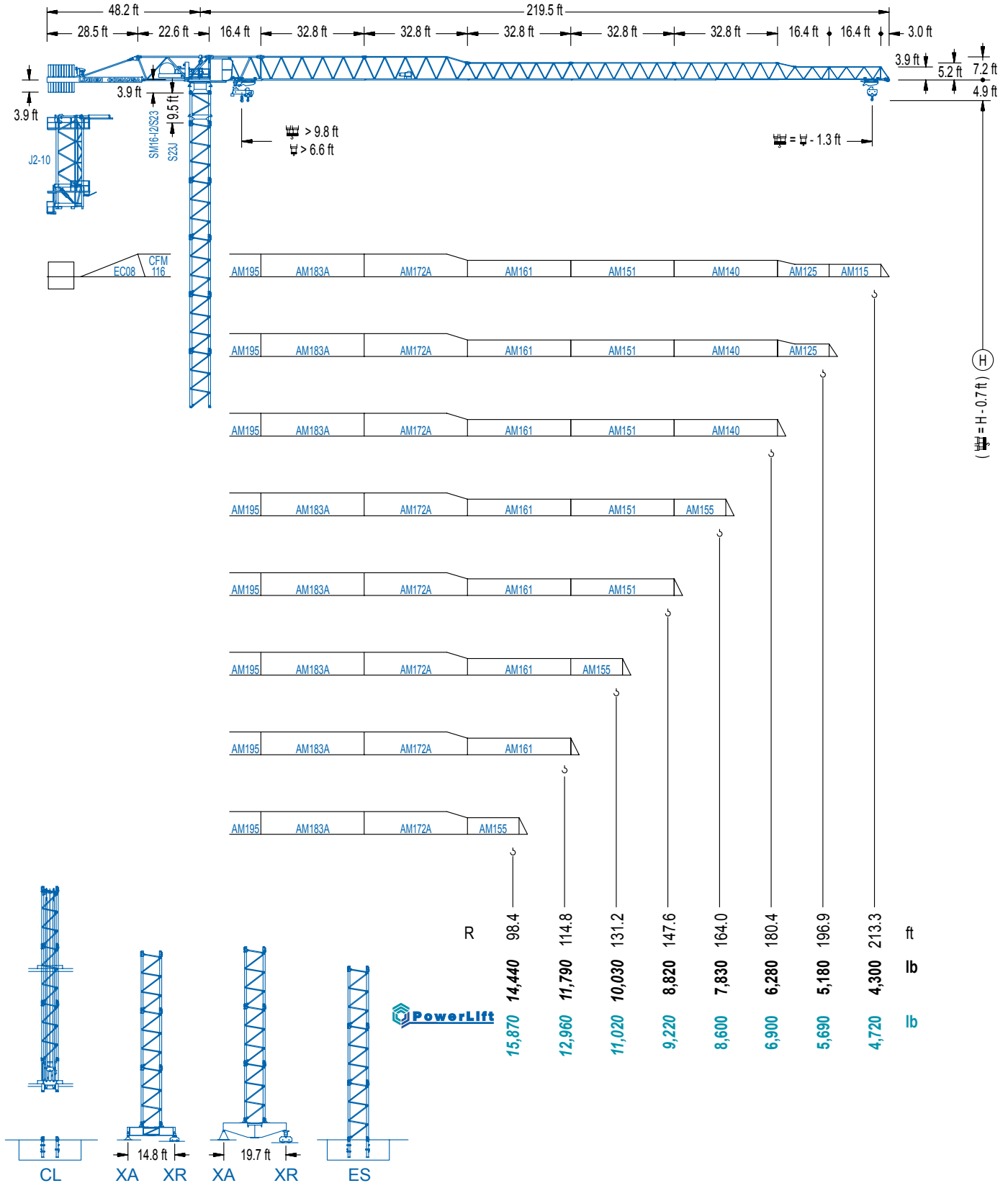


LC 1600

16 LC 185

17,640 lb



LC 1600

DIAGRAMA DE CARGAS

Load chart / Diagramme de charges / Lastdiagramm / Diagramma di carico / Диаграмма распределения нагрузки

R (ft)	🏠										🏢																																		
213.3	58.7	65.6	72.2	78.7	85.3	91.9	98.4	105.3	114.8	121.4	131.2	137.8	147.6	154.2	164.0	170.6	180.4	187.0	196.9	203.4	213.3	ft	17,640	15,520	13,890	12,540	11,400	10,430	9,590	8,820	8,820	8,270	7,580	7,160	6,610	6,310	5,860	5,600	5,250	5,030	4,740	4,540	4,300	lb	
196.9		63.3	72.2	78.7	85.3	91.9	98.4	105.0	113.2	123.7	131.2	137.8	147.6	154.2	164.0	170.6	180.4	187.0	196.9			ft	17,640	15,120	13,650	12,430	11,380	10,470	9,680	8,820	8,820	8,250	7,800	7,230	6,880	6,390	6,130	5,730	5,510	5,180			lb		
180.4		67.9	72.2	78.7	85.3	91.9	98.4	105.0	114.8	122.4	133.9	137.8	147.6	154.2	164.0	170.6	180.4					ft	17,640	16,470	14,900	13,580	12,430	11,460	10,600	9,520	8,820	8,820	8,530	7,890	7,520	7,010	6,700	6,280					lb		
164.0		74.8	78.7	85.3	91.9	98.4	105.0	114.8	121.4	131.2	134.5	147.6	154.2	164.0									ft	17,640	16,600	15,120	13,890	12,810	11,860	10,670	9,990	9,080	8,820	8,820	8,380	7,830									lb
147.6			77.8	85.3	91.9	98.4	105.0	114.8	121.4	131.2	140.4	147.6											ft	17,640	15,900	14,590	13,470	12,480	11,220	10,520	9,570	8,820	8,820												lb
131.2			80.1	85.3	91.9	98.4	105.0	114.8	121.4	129.9													ft	17,640	16,400	15,080	13,910	12,900	11,620	10,870	10,030														lb
114.8			80.1	85.3	91.9	98.4	105.0	113.5															ft	17,640	16,420	15,080	13,930	12,920	11,790																lb
98.4			81.7	85.3	91.9	97.1																	ft	17,640	16,750	15,390	14,440																		lb

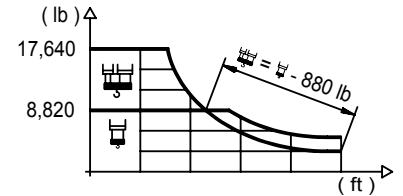
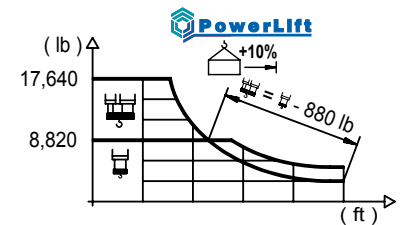


DIAGRAMA DE CARGAS POWERLIFT

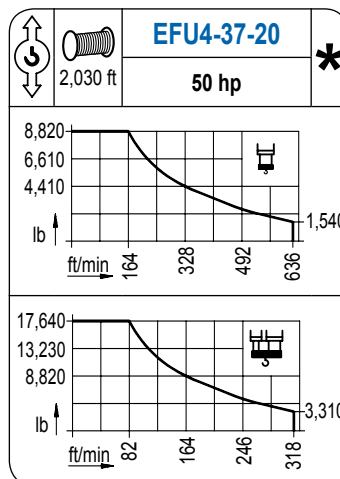
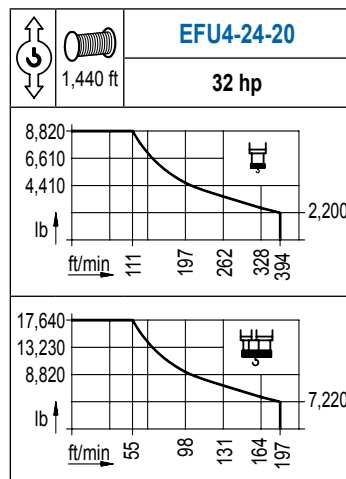
Load chart PowerLift / Diagramme de charges PowerLift / Lastdiagramm PowerLift / Diagramma di carico PowerLift / Диаграмма распределения нагрузки PowerLift

R (ft)	🏠										🏢																																		
213.3	62.3	65.6	72.2	78.7	85.3	91.9	98.4	105.0	111.9	124.0	131.2	137.8	147.6	154.2	164.0	170.6	180.4	187.0	196.9	203.4	213.3	ft	17,640	16,640	14,900	13,450	12,240	11,200	10,320	9,550	8,820	8,820	8,270	7,830	7,230	6,880	6,420	6,130	5,730	5,510	5,180	4,980	4,720	lb	
196.9		67.3	72.2	78.7	85.3	91.9	98.4	105.0	114.8	121.1	133.9	137.8	147.6	154.2	164.0	170.6	180.4	187.0	196.9			ft	17,640	16,290	14,730	13,400	12,280	11,330	10,470	9,390	8,820	8,820	8,530	7,890	7,520	7,010	6,700	6,280	6,040	5,690			lb		
180.4		72.8	78.7	85.3	91.9	98.4	105.0	114.8	121.4	131.2	145.0	147.6	154.2	164.0	170.6	180.4						ft	17,640	16,140	14,700	13,490	12,430	11,530	10,360	9,680	8,820	8,820	8,640	8,250	7,690	7,360	6,900						lb		
164.0		80.4	85.3	91.9	98.4	105.0	114.8	121.4	131.2	137.8	144.7	160.4	164.0										ft	17,640	16,470	15,120	13,960	12,940	11,660	10,910	9,940	9,370	8,820	8,820	8,600										lb
147.6			84.0	91.9	98.4	105.0	114.8	121.4	131.2	137.8	146.3												ft	17,640	15,940	14,730	13,670	12,300	11,530	10,520	9,920	9,220													lb
131.2			86.6	91.9	98.4	105.0	114.8	121.4	129.9														ft	17,640	16,490	15,260	14,150	12,740	11,950	11,020															lb
114.8			86.9	91.9	98.4	105.0	113.5																ft	17,640	16,560	15,300	14,200	12,960																	lb
98.4			88.6	91.9	97.1																		ft	17,640	16,910	15,870																			lb



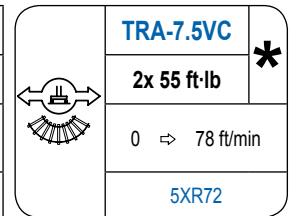
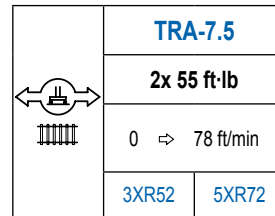
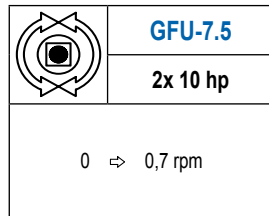
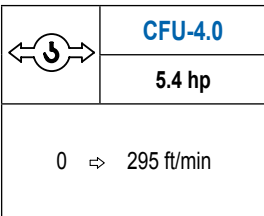
MECANISMOS

Mechanisms / Mécanismes / Antriebe / Meccanismi / Механизмы



MECANISMOS

Mechanisms / Mécanismes / Antriebe / Meccanismi / Механизмы



POTENCIA / POWER / PUISSANCE / LEISTUNG / POTENZA / МОЩНОСТЬ				Tensión de alimentación / Operating voltage / Tension de service / Betriebsspannung / Tensione di alimentazione / Напряжение источника питания	Generador / Generator / Générateur / Generator / Generatore / Генератор
Elevación / Hoist / Levage / Hub / Sollevamento / Тип механизма (подъем)	Carro / Trolley / Chariot / Laufkatze / Carrello / Грузовая тележка	Giro / Slewing / Rotation / Drehbewegung / Rotazione / Поворот	Traslación / Travel / Translation / Verfahrbewegung / Traslazione / Ход		
EFU4-24-20	CFU-4.0	(2x) GFU-7.5	(2x) TRA-7.5	480 V 3ph 60 Hz	85 kVA
EFU4-37-20					110 kVA

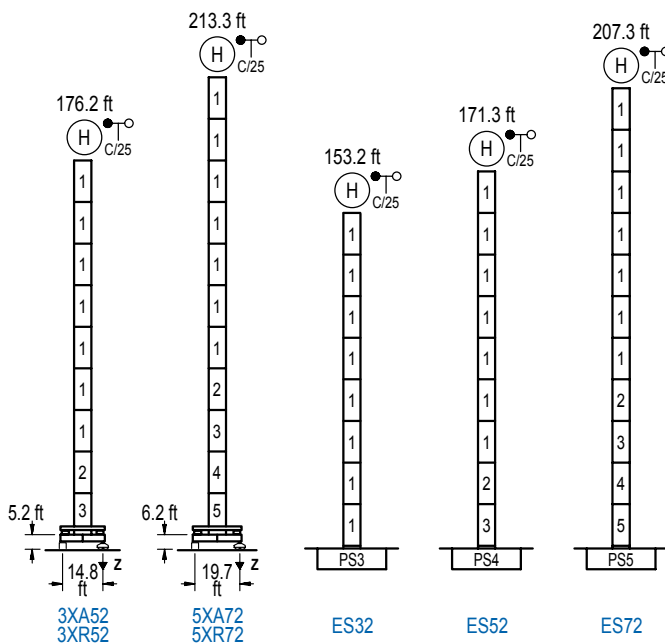
Opcional / Optional / En option / Kaufoption / Opzionale / Опционально

*

ALTURAS BAJO GANCHO

Heights under hook / Hauteurs sous crochet / Hakenhöhen / Altezza sotto gancio / Высота под крюком

∅ 6.6 ft

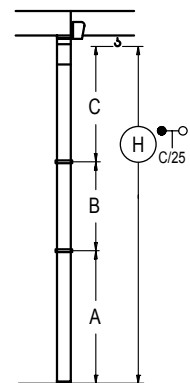


n°	Ref.	∅	h
1	S23	6.6	18.0
2	TS24	6.6	18.0
3	S24	6.6	18.0
4	TS25	6.6	18.0
5	S25	6.6	18.0

Z máx.	En servicio / In operation / En service / In Betrieb / In servizio / При работе	3XR52.. 194 kip 5XR72.. 187 kip
	Fuera de servicio / Out of service / Hors service / Ausser Betrieb / Fuori servizio / В стационарном состоянии	3XR52.. 220 kip 5XR72.. 293 kip

GRÚA ARRIOSTRADA

Braced crane / Grue à entretoisement / Abgespannter Kran / Gru ancorata / Нарастиваемый кран

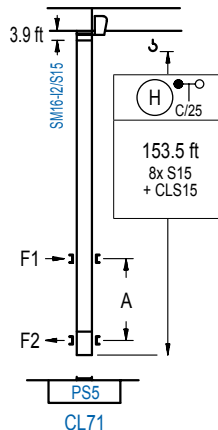


	3XA52	5XA72
A max	131.6	168.6
B max	- 72.2	- 72.2
C max	116.8 116.8	116.8 116.8
H max	248.4 320.5	285.4 357.6

	ES32	ES52	ES72
A max	108.6	126.6	162.7
B max	- 72.2	- 72.2	- 72.2
C max	116.8 116.8	116.8 116.8	116.8 116.8
H max	225.4 297.6	243.4 315.6	279.5 351.7

GRÚA TREPADORA

Internal climbing crane / Grue avec cage de télescopage intérieure / Kran mit klettern im Gebäude / Gru in rampante in cavedio / Кран с самоподъемом



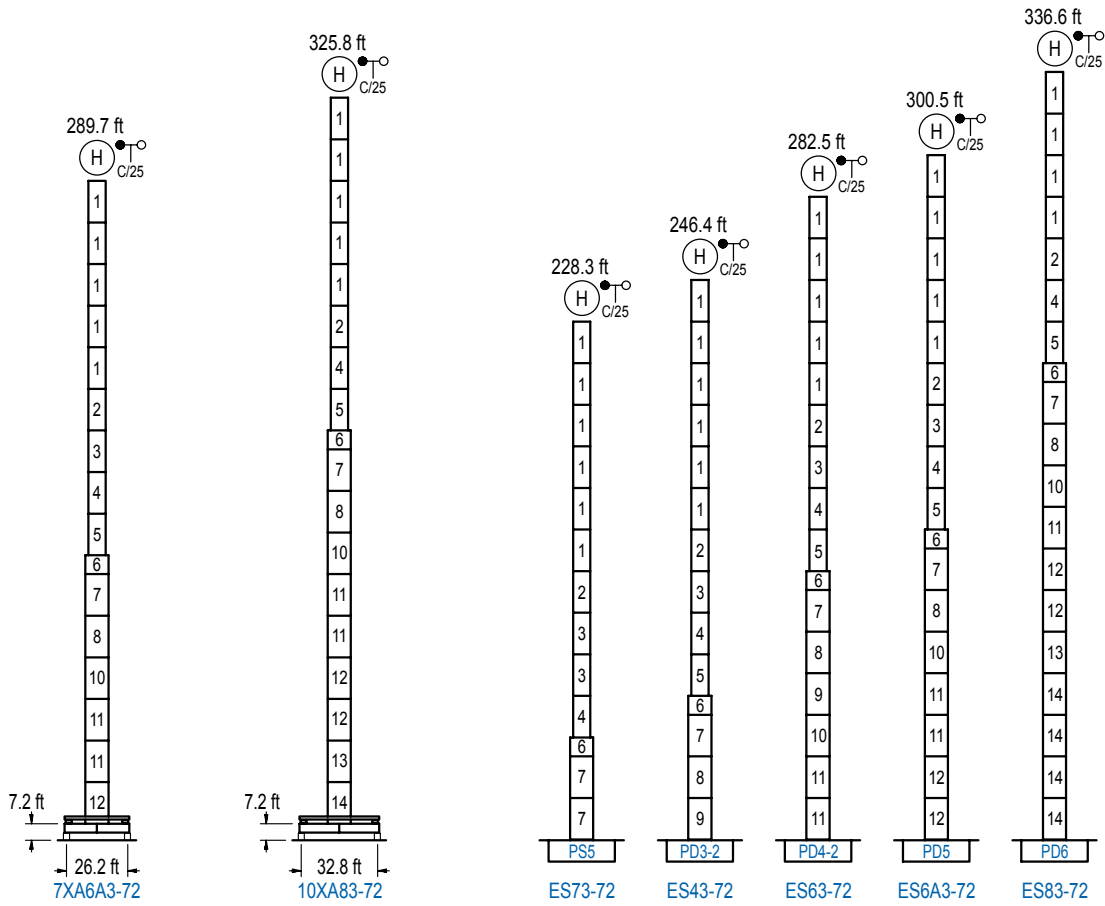
n°	Ref.	∅	h
14	S15	5.2	18.0
15	CLS15	5.2	10.2

Otras zonas de viento, alturas superiores, arriostramientos o trepado interno consultar / Other wind zones, additional hook heights, tie frames or internal climbing on request / Autres zones de vent, des hauteurs supplémentaires, entretoisements ou grues avec cage de télescopage intérieure, sur demande / Andere Windzonen, weitere Hakenhöhen, Abspannungen zum Gebäude oder Klettern im Gebäude auf Anfrage / Per zone con velocità del vento particolari, altezze superiori, ancoraggi o rampante in cavedio, consultare il fabbricante / При других ветренных зонах, при большой высоте, привязках к зданию или наращивании крана внутри здания проконсультируйтесь с нами

DS.1308.01.IA 01/14
16LC185/17,640 lb

Reserva de modificaciones. Subject to modifications. Modifications réservées. Konstruktionsänderungen vorbehalten.
Il Fabbricante si riserva la facoltà di apportare modifiche. Возможны изменения.

LC 1600



n°	Ref.	∅	h	n°	Ref.	∅	h	n°	Ref.	∅	h	n°	Ref.	∅	h
1	S23	6.6	18.0	4	TS25	6.6	18.0	7	S35	8.2	18.0	11	D34	8.2	18.0
2	TS24	6.6	18.0	5	S25	6.6	18.0	8	TD33A	8.2	18.0	12	D35	8.2	18.0
3	S24	6.6	18.0	6	TMS35S25	8.2	3.3	9	D33	8.2	18.0	13	TD36B	8.2	18.0
								10	TD34	8.2	18.0	14	D36	8.2	18.0

Otras zonas de viento o alturas superiores consultar / Other wind zones or additional hook heights on request / Autres zones de vent ou des hauteurs supplémentaires sur demande / Andere Windzonen oder weitere Hakenhöhen auf Anfrage / Per zone con velocità del vento particolari o altezze superiori consultare il fabbricante / При других ветренных зонах о при большой высоте проконсультируйтесь с нами