

LC 1600

DIAGRAMA DE CARGAS

Load chart / Diagramme de charges / Lastdiagramm / Diagramma di carico / Диаграмма распределения нагрузки

R (ft)																																																
213.3	53.8	59.1	65.6	72.2	78.7	85.3	88.6	96.1	104.0	114.8	121.4	131.2	137.8	147.6	154.2	164.0	170.6	180.4	187.0	196.9	203.4	213.3	ft	22,050	19,820	17,500	15,630	14,070	12,760	12,190	11,020	11,020	9,850	9,240	8,470	7,980	7,360	7,010	6,530	6,220	5,820	5,580	5,220	5,030	4,740	lb		
196.9		59.4	65.6	72.2	78.7	85.3	88.6	98.4	106.3	115.5	121.4	131.2	137.8	147.6	154.2	164.0	170.6	180.4	187.0	196.9			ft	22,050	19,670	17,590	15,870	14,420	13,780	12,130	11,020	11,020	10,430	9,550	9,040	8,330	7,940	7,390	7,050	6,590	6,330	5,950			lb			
180.4			65.9	72.2	78.7	85.3	88.6	98.4	105.0	114.8	117.8	128.6	137.8	147.6	154.2	164.0	170.6	180.4					ft	22,050	19,800	17,900	16,270	15,560	13,730	12,700	11,380	11,020	11,020	10,210	9,440	8,970	8,380	8,000	7,500							lb		
164.0				71.5	78.7	85.3	88.6	98.4	105.0	114.8	121.4	128.3	140.4	147.6	154.2	164.0								ft	22,050	19,710	17,970	17,200	15,170	14,040	12,610	11,770	11,020	11,020	10,430	9,920	9,260											lb
147.6					73.5	78.7	85.3	88.6	98.4	105.0	114.8	121.4	131.9	145.0	147.6									ft	22,050	20,370	18,560	17,750	15,700	14,530	13,050	12,190	11,020	11,020	10,800													lb
131.2						74.5	78.7	85.3	88.6	98.4	105.0	114.8	121.4	129.6										ft	22,050	20,700	18,870	18,060	15,960	14,790	13,270	12,410	11,460															lb
114.8							76.4	78.7	85.3	88.6	98.4	105.0	113.2											ft	22,050	21,250	19,380	18,540	16,400	15,190	13,890																	lb
98.4								74.8	78.7	85.3	88.6	96.8												ft	22,050	20,750	18,920	18,100	16,310																			lb

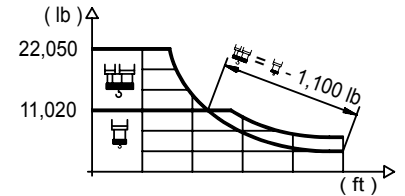
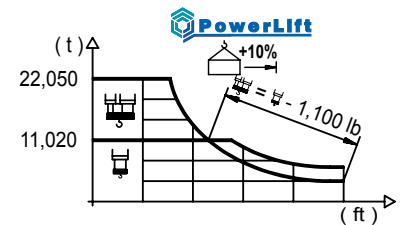


DIAGRAMA DE CARGAS POWERLIFT

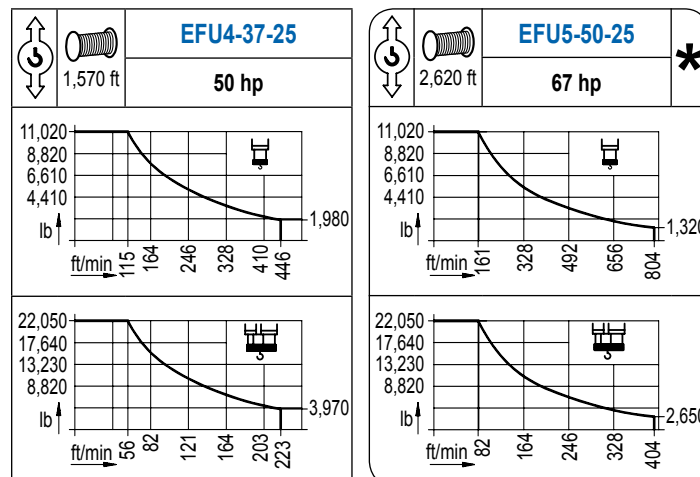
Load chart PowerLift / Diagramme de charges PowerLift / Lastdiagramm PowerLift / Diagramma di carico PowerLift / Диаграмма распределения нагрузки PowerLift

R (ft)																																															
213.3	57.1	65.6	72.2	78.7	85.3	91.9	98.4	101.4	112.2	121.4	131.2	137.8	147.6	154.2	164.0	170.6	180.4	187.0	196.9	203.4	213.3	ft	22,050	18,670	16,690	15,040	13,670	12,480	11,460	11,020	11,020	10,080	9,220	8,710	8,050	7,650	7,120	6,790	6,370	6,110	5,730	5,510	5,200	lb			
196.9		63.3	72.2	78.7	85.3	91.9	98.4	105.0	113.2	125.0	131.2	137.8	147.6	154.2	164.0	170.6	180.4	187.0	196.9				ft	22,050	18,940	17,090	15,540	14,220	13,100	12,100	11,020	11,020	10,450	9,880	9,130	8,690	8,090	7,740	7,250	6,970	6,550				lb		
180.4			70.5	78.7	85.3	91.9	98.4	105.0	114.8	121.4	126.0	139.8	147.6	154.2	164.0	170.6	180.4						ft	22,050	19,380	17,640	16,180	14,900	13,800	12,390	11,550	11,020	11,020	10,360	9,850	9,190	8,800	8,250								lb	
164.0				76.8	85.3	91.9	98.4	105.0	114.8	121.4	131.2	137.8	152.9	154.2	164.0									ft	22,050	19,530	17,920	16,530	15,320	13,780	12,870	11,710	11,020	11,020	10,910	10,190											lb
147.6					79.1	85.3	91.9	98.4	105.0	114.8	121.4	131.2	142.1	147.6										ft	22,050	20,240	18,580	17,150	15,900	14,290	13,360	12,170	11,020	11,020	11,020												lb
131.2						80.7	85.3	91.9	98.4	105.0	114.8	121.4	129.6											ft	22,050	20,640	18,940	17,480	16,200	14,570	13,650	12,610															lb
114.8							82.7	85.3	91.9	98.4	105.0	113.2												ft	22,050	21,230	19,490	17,990	16,690	15,280																	lb
98.4								81.0	85.3	91.9	96.8													ft	22,050	20,770	19,070	17,950																			lb



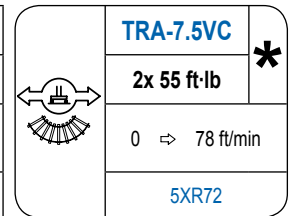
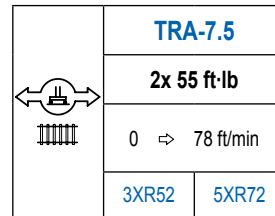
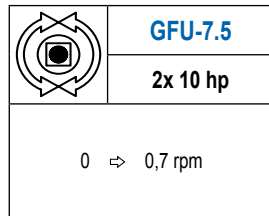
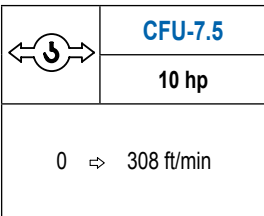
MECANISMOS

Mechanisms / Mécanismes / Antriebe / Meccanismi / Механизмы



MECANISMOS

Mechanisms / Mécanismes / Antriebe / Meccanismi / Механизмы



POTENCIA / POWER / PUISSANCE / LEISTUNG / POTENZA / МОЩНОСТЬ				Tensión de alimentación / Operating voltage / Tension de service / Betriebsspannung / Tensione di alimentazione / Напряжение источника питания	Generador / Generator / Générateur / Generator / Generatore / Генератор
Elevación / Hoist / Levage / Hub / Sollevamento / Тип механизма (подъем)	Carro / Trolley / Chariot / Laufkatze / Carrello / Грузовая тележка	Giro / Slewing / Rotation / Drehbewegung / Rotazione / Поворот	Traslación / Travel / Translation / Verfahrbewegung / Traslazione / Ход		
EFU4-37-25	CFU-7.5	(2x) GFU-7.5	(2x) TRA-7.5	480 V 3ph 60 Hz	115 kVA
EFU5-50-25					150 kVA

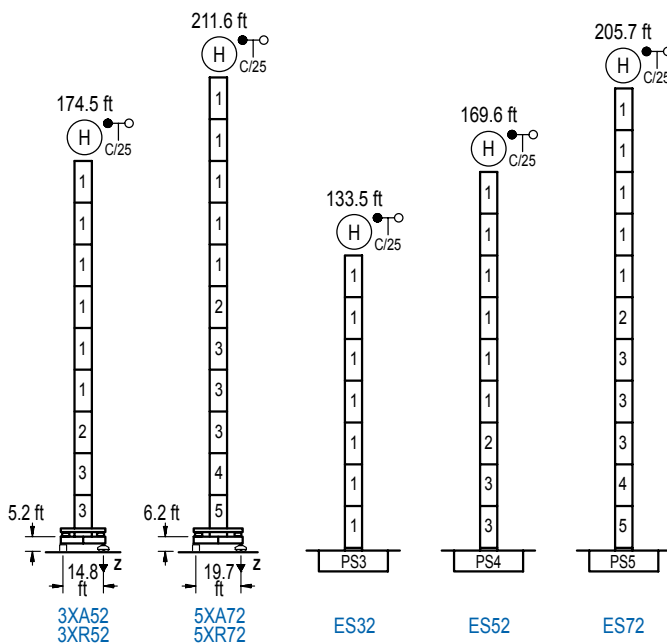
Opcional / Optional / En option / Kaufoption / Opzionale / Опционально

*

ALTURAS BAJO GANCHO

Heights under hook / Hauteurs sous crochet / Hakenhöhen / Altezza sotto gancio / Высота под крюком

∅ 6.6 ft

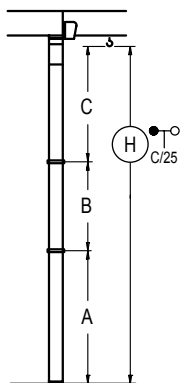


n°	Ref.	∅	h
1	S23	6.6	18.0
2	TS24	6.6	18.0
3	S24	6.6	18.0
4	TS25	6.6	18.0
5	S25	6.6	18.0

Z máx.	En servicio / In operation / En service / In Betrieb / In servizio / При работе	3XR52.. 209 kip 5XR72.. 192 kip
	Fuera de servicio / Out of service / Hors service / Ausser Betrieb / Fuori servizio / В стационарном состоянии	3XR52.. 220 kip 5XR72.. 298 kip

GRÚA ARRIOSTRADA

Braced crane / Grue à entretoisement / Abgespannter Kran / Gru ancorata / Нарастиваемый кран

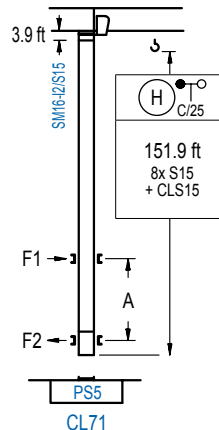


	3XA52	5XA72
A max	131.6	168.6
B max	- 72.2	- 72.2
C max	115.1 115.1	115.1 97.1
H max	246.7 318.9	283.8 337.9

	ES32	ES52	ES72
A max	90.6	126.6	162.7
B max	- 72.2	- 72.2	- 72.2
C max	115.1 115.1	115.1 115.1	115.1 97.1
H max	205.7 277.9	241.8 314.0	277.9 332.0

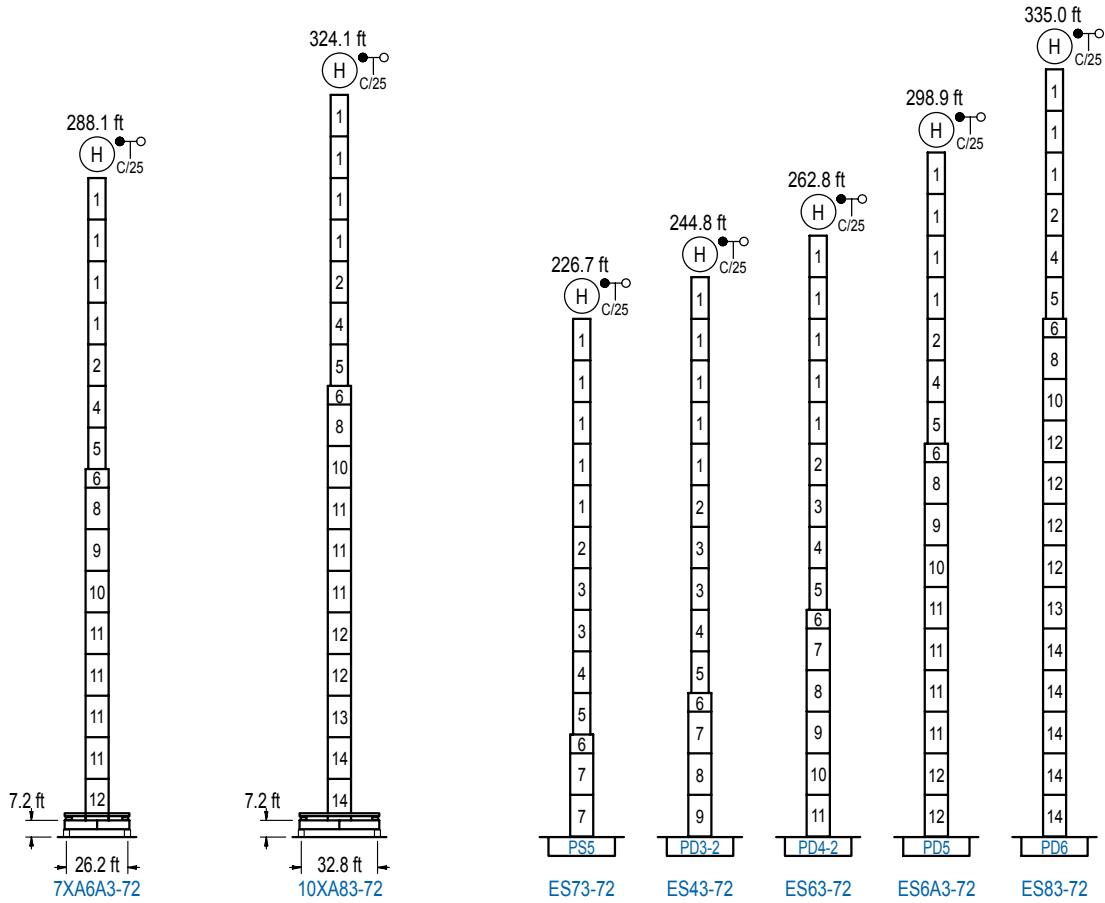
GRÚA TREPADORA

Internal climbing crane / Grue avec cage de télescopage intérieure / Kran mit klettern im Gebäude / Gru in rampante in cavedio / Кран с самоподъемом



n°	Ref.	∅	h
14	S15	5.2	18.0
15	CLS15	5.2	10.2

Otras zonas de viento, alturas superiores, arriostramientos o trepado interno consultar / Other wind zones, additional hook heights, tie frames or internal climbing on request / Autres zones de vent, des hauteurs supplémentaires, entretoisements ou grues avec cage de télescopage intérieure, sur demande / Andere Windzonen, weitere Hakenhöhen, Abspannungen zum Gebäude oder Klettern im Gebäude auf Anfrage / Per zone con velocità del vento particolari, altezze superiori, ancoraggi o rampante in cavedio, consultare il fabbricante / При других ветренных зонах, при большой высоте, привязках к зданию или наращивании крана внутри здания проконсультируйтесь с нами



n°	Ref.	Ø	h	n°	Ref.	Ø	h	n°	Ref.	Ø	h	n°	Ref.	Ø	h
1	S23	6.6	18.0	4	TS25	6.6	18.0	7	S35	8.2	18.0	11	D34	8.2	18.0
2	TS24	6.6	18.0	5	S25	6.6	18.0	8	TD33A	8.2	18.0	12	D35	8.2	18.0
3	S24	6.6	18.0	6	TMS35S25	8.2	3.3	9	D33	8.2	18.0	13	TD36B	8.2	18.0
								10	TD34	8.2	18.0	14	D36	8.2	18.0

Otras zonas de viento o alturas superiores consultar / Other wind zones or additional hook heights on request / Autres zones de vent ou des hauteurs supplémentaires sur demande / Andere Windzonen oder weitere Hakenhöhen auf Anfrage / Per zone con velocità del vento particolari o altezze superiori consultare il fabbricante / При других ветренных зонах о при большой высоте проконсультируйтесь с нами



Construcciones Metálicas COMANSA S. A.

Tel.: (34) 948 335 020 / Fax: (34) 948 330 810 / e-mail: info@comansa.com
Polígono Urbizkain E-31620 HUARTE-PAMPLONA.- SPAIN

DS.1308.04.IA 01/14 **16LC220/22,050 lb**