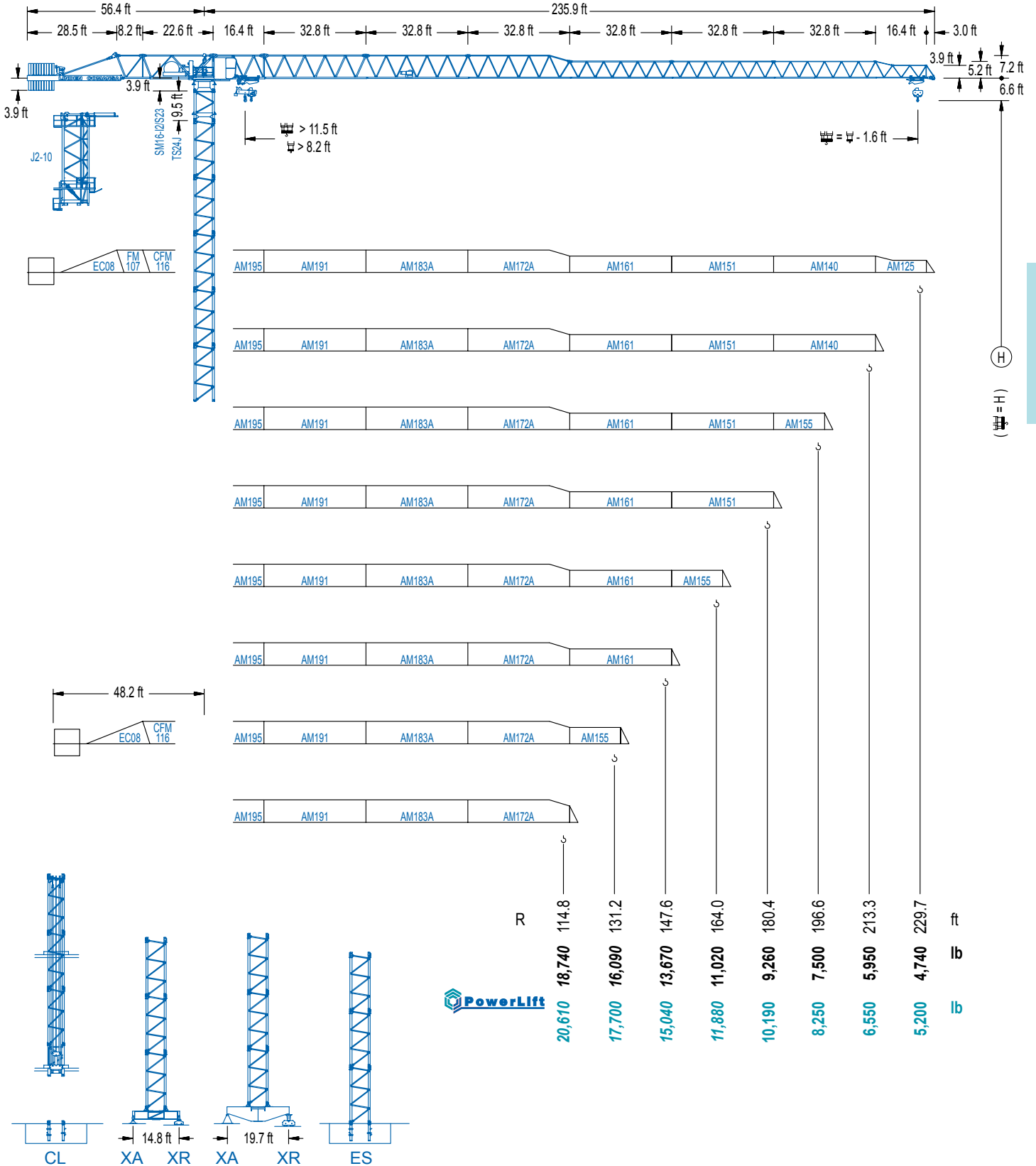


LC 1600

16 LC 260

22,050 lb



LC 1600

DIAGRAMA DE CARGAS

Load chart / Diagramme de charges / Lastdiagramm / Diagramma di carico / Диаграмма распределения нагрузки

R (ft)	🏠										🏢																																			
229.7	58.1	72.2	78.7	85.3	91.9	98.4	102.4	111.9	121.4	131.2	137.8	147.6	154.2	164.0	170.6	180.4	187.0	196.9	203.4	213.3	219.8	229.7	ft	22,050	17,040	15,370	13,960	12,740	11,730	11,020	11,020	10,050	9,190	8,690	8,020	7,630	7,100	6,790	6,350	6,080	5,730	5,510	5,200	5,000	4,740	lb
213.3	64.3	72.2	78.7	85.3	91.9	98.4	105.0	115.2	125.0	131.2	137.8	147.6	154.2	164.0	170.6	180.4	187.0	196.9	203.4	213.3	ft	22,050	19,290	17,420	15,830	14,510	13,340	12,350	11,020	11,020	10,450	9,880	9,130	8,690	8,090	7,740	7,250	6,940	6,550	6,310	5,950	lb				
196.9	71.9	78.7	85.3	91.9	98.4	105.0	114.8	121.4	128.6	140.4	147.6	154.2	164.0	170.6	180.4	187.0	196.9	ft	22,050	19,780	18,010	16,510	15,210	14,090	12,650	11,820	11,020	11,020	10,410	9,920	9,240	8,840	8,290	7,960	7,500	lb										
180.4	78.4	85.3	91.9	98.4	105.0	114.8	121.4	131.2	137.8	141.1	154.5	164.0	170.6	180.4	ft	22,050	20,040	18,390	16,980	15,740	14,150	13,230	12,040	11,330	11,020	11,020	10,320	9,880	9,260	lb																
164.0	88.9	98.4	105.0	114.8	121.4	131.2	137.8	147.6	160.8	164.0	ft	22,050	19,600	18,190	16,380	15,340	14,000	13,210	12,150	11,020	11,020	lb																								
147.6	96.8	105.0	114.8	121.4	131.2	137.8	146.0	ft	22,050	20,080	18,120	17,000	15,500	14,640	13,670	lb																														
131.2	98.8	105.0	114.8	121.4	129.6	ft	22,050	20,520	18,520	17,370	16,090	lb																																		
114.8	98.1	105.0	113.2	ft	22,050	20,440	18,740	lb																																						

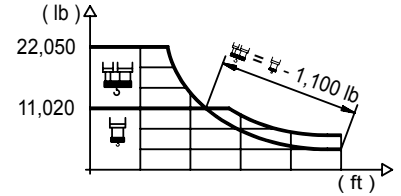
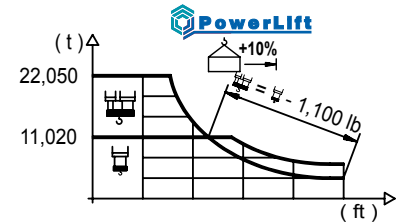


DIAGRAMA DE CARGAS POWERLIFT

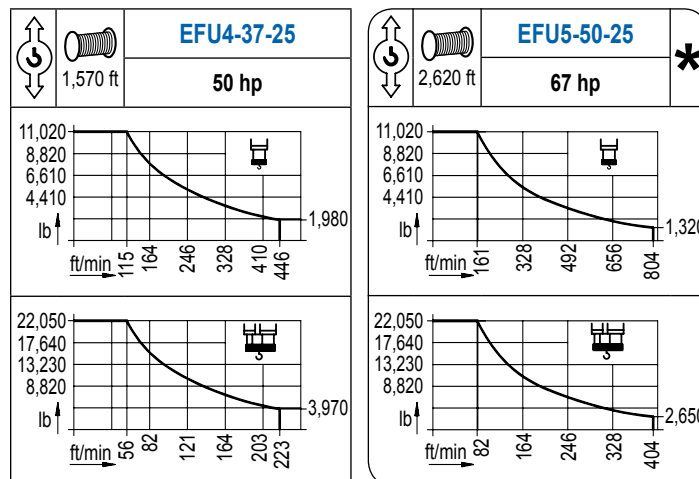
Load chart PowerLift / Diagramme de charges PowerLift / Lastdiagramm PowerLift / Diagramma di carico PowerLift / Диаграмма распределения нагрузки PowerLift

R (ft)	🏠										🏢																																			
229.7	61.4	72.2	78.7	85.3	91.9	98.4	109.3	120.4	121.4	131.2	137.8	147.6	154.2	164.0	170.6	180.4	187.0	196.9	203.4	213.3	219.8	229.7	ft	22,050	18,190	16,400	14,930	13,650	12,540	11,020	11,020	10,930	10,010	9,480	8,750	8,330	7,760	7,410	6,940	6,660	6,260	6,020	5,690	5,490	5,200	lb
213.3	68.6	72.2	78.7	85.3	91.9	98.4	105.0	114.8	122.7	135.5	137.8	147.6	154.2	164.0	170.6	180.4	187.0	196.9	203.4	213.3	ft	22,050	20,750	18,740	17,060	15,630	14,400	13,340	11,950	11,020	11,020	10,800	10,010	9,520	8,860	8,490	7,960	7,630	7,190	6,920	6,550	lb				
196.9	76.8	85.3	91.9	98.4	105.0	114.8	121.4	131.2	137.8	152.2	154.2	164.0	170.6	180.4	187.0	196.9	ft	22,050	19,510	17,900	16,510	15,300	13,760	12,850	11,680	11,020	11,020	10,870	10,140	9,700	9,100	8,750	8,250	lb												
180.4	84.3	91.9	98.4	105.0	114.8	121.4	131.2	137.8	147.6	151.9	168.0	170.6	180.4	ft	22,050	20,020	18,470	17,130	15,430	14,440	13,160	12,410	11,400	11,020	11,020	10,850	10,190	lb																		
164.0	95.8	105.0	114.8	121.4	131.2	137.8	147.6	154.2	162.4	ft	22,050	19,860	17,920	16,800	15,340	14,460	13,340	12,650	11,880	lb																										
147.6	105.0	114.8	121.4	131.2	137.8	146.0	ft	22,050	19,860	18,650	17,040	16,090	15,040	lb																																
131.2	107.0	114.8	121.4	129.6	ft	22,050	20,350	19,090	17,700	lb																																				
114.8	106.6	113.2	ft	22,050	20,610	lb																																								



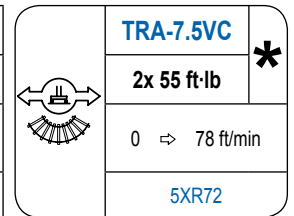
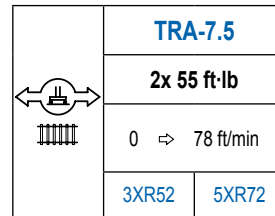
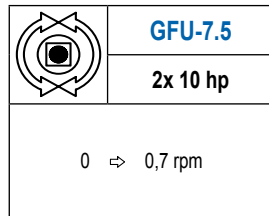
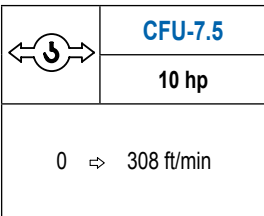
MECANISMOS

Mechanisms / Mécanismes / Antriebe / Meccanismi / Механизмы



MECANISMOS

Mechanisms / Mécanismes / Antriebe / Meccanismi / Механизмы



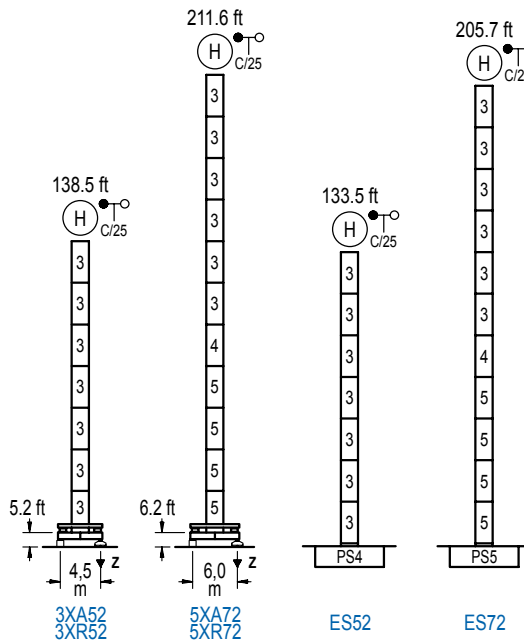
POTENCIA / POWER / PUISSANCE / LEISTUNG / POTENZA / МОЩНОСТЬ				Tensión de alimentación / Operating voltage / Tension de service / Betriebsspannung / Tensione di alimentazione / Напряжение источника питания	Generador / Generator / Générateur / Generator / Generatore / Генератор
Elevación / Hoist / Levage / Hub / Sollevamento / Тип механизма (подъем)	Carro / Trolley / Chariot / Laufkatze / Carrello / Грузовая тележка	Giro / Slewing / Rotation / Drehbewegung / Rotazione / Поворот	Traslación / Travel / Translation / Verfahrbewegung / Traslazione / Ход		
EFU4-37-25	CFU-7.5	(2x) GFU-7.5	(2x) TRA-7.5	480 V 3ph 60 Hz	115 kVA
EFU5-50-25					150 kVA

Opcional / Optional / En option / Kaufoption / Opzionale / Опционально
*

ALTURAS BAJO GANCHO

Heights under hook / Hauteurs sous crochet / Hakenhöhen / Altezza sotto gancio / Высота под крюком

∅ 6.6 ft

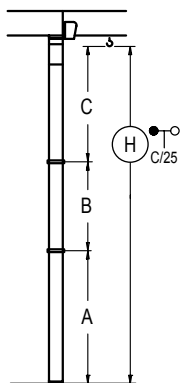


n°	Ref.	∅	h
3	S24	6.6	18.0
4	TS25	6.6	18.0
5	S25	6.6	18.0

Z máx.	En servicio / In operation / En service / In Betrieb / In servizio / При работе	3XR52.. 218 kip 5XR72.. 196 kip
	Fuera de servicio / Out of service / Hors service / Ausser Betrieb / Fuori servizio / В стационарном состоянии	3XR52.. 148 kip 5XR72.. 300 kip

GRÚA ARRIOSTRADA

Braced crane / Grue à entretoisement / Abgespannter Kran / Gru ancorata / Нарастиваемый кран

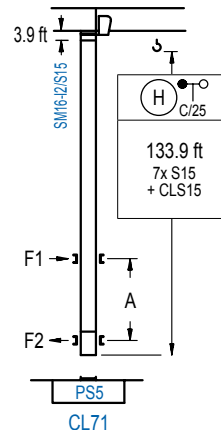


	3XA52	5XA72
A max	95.5	168.6
B max	- 72.2	- 72.2
C max	115.1 115.1	115.1 97.1
H max	210.6 282.8	283.8 337.9

	ES52	ES72
A max	90.6	162.7
B max	- 72.2	- 72.2
C max	115.1 115.1	115.1 97.1
H max	205.7 277.9	277.9 332.0

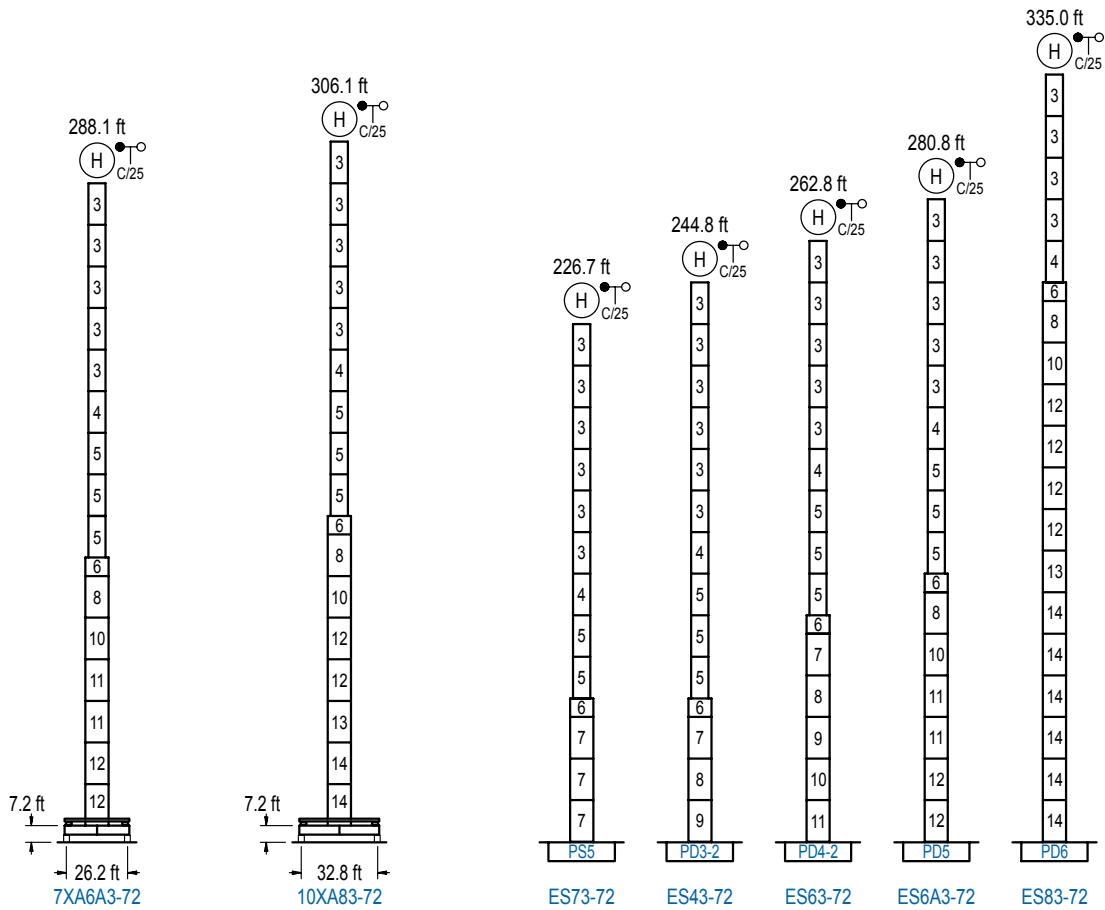
GRÚA TREPADORA

Internal climbing crane / Grue avec cage de télescopage intérieure / Kran mit klettern im Gebäude / Gru in rampante in cavedio / Кран с самоподъемом



n°	Ref.	∅	h
14	S15	5.2	18.0
15	CLS15	5.2	10.2

Otras zonas de viento, alturas superiores, arriostramientos o trepado interno consultar / Other wind zones, additional hook heights, tie frames or internal climbing on request / Autres zones de vent, des hauteurs supplémentaires, entretoisements ou grues avec cage de télescopage intérieure, sur demande / Andere Windzonen, weitere Hakenhöhen, Abspannungen zum Gebäude oder Klettern im Gebäude auf Anfrage / Per zone con velocità del vento particolari, altezze superiori, ancoraggi o rampante in cavedio, consultare il fabbricante / При других ветренных зонах, при большой высоте, привязках к зданию или наращивании крана внутри здания проконсультируйтесь с нами



n°	Ref.	∅	h	n°	Ref.	∅	h	n°	Ref.	∅	h	n°	Ref.	∅	h
3	S24	6.6	18.0	7	S35	8.2	18.0	10	TD34	8.2	18.0	13	TD36B	8.2	18.0
4	TS25	6.6	18.0	8	TD33A	8.2	18.0	11	D34	8.2	18.0	14	D36	8.2	18.0
5	S25	6.6	18.0	9	D33	8.2	18.0	12	D35	8.2	18.0				
6	TMS35S25	8.2	3.3												

Otras zonas de viento o alturas superiores consultar / Other wind zones or additional hook heights on request / Autres zones de vent ou des hauteurs supplémentaires sur demande / Andere Windzonen oder weitere Hakenhöhen auf Anfrage / Per zone con velocità del vento particolari o altezze superiori consultare il fabbricante / При других ветренных зонах о при большой высоте проконсультируйтесь с нами