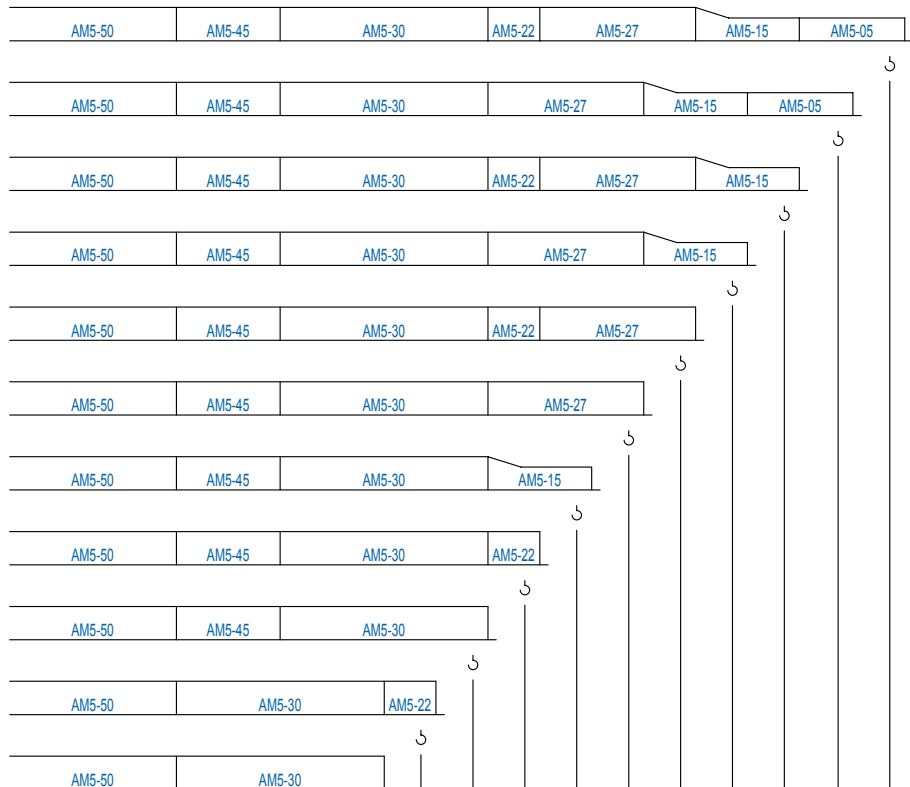
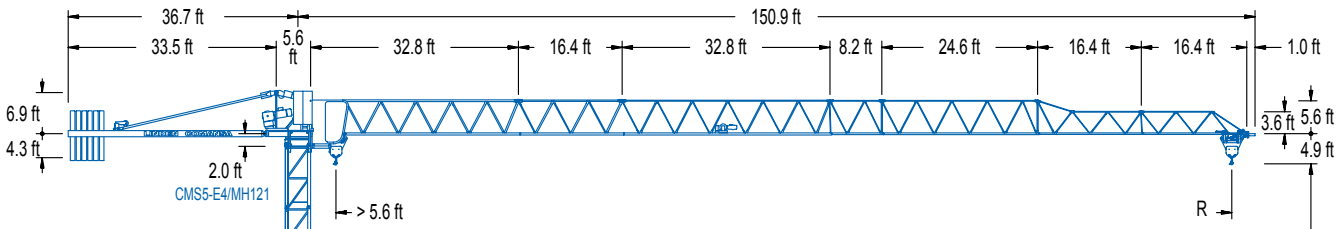


LC 500

5 LC 4510

8,820 lb



* L

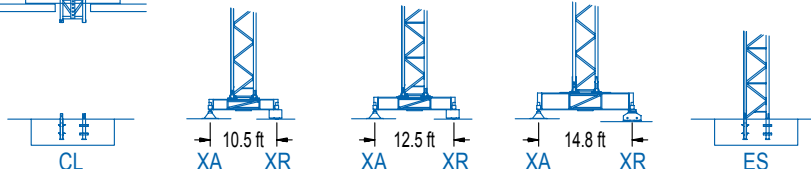
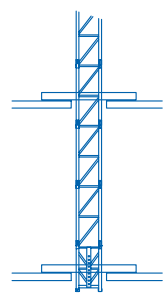
AM5-50 = AM5-55T + AM5-55D
 AM5-30 = AM5-35T + AM5-35D

* H (U) = H + 3.6 ft

MJ12A
 MJ12
 JT1
 P11
 GH

1 Montaje inicial / Initial erection
 Montage initial / Erstmontage
 Montaggio iniziale
 Первоначальный монтаж

R	65.6	73.8	82.0	90.2	98.4	106.6	114.8	123.0	131.2	139.4	147.6	ft
PowerLift	4,410	4,410	4,410	4,410	4,410	3,970	3,530	3,310	2,760	2,430	2,430	lb
PowerLift	7,280	6,310	5,820	5,200	4,610	4,120	3,640	3,400	2,780	2,430	2,180	lb
	6,610	5,730	5,290	4,740	4,190	3,750	3,310	3,090	2,540	2,200	1,980	lb
												lb
												lb

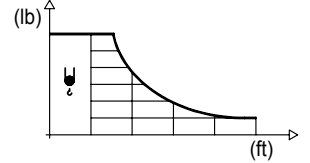


LC 500

DIAGRAMA DE CARGAS

Load chart / Diagramme de charges / Lastdiagramm / Diagramma di carico / Диаграмма распределения нагрузки

R (ft)	ψ	RC ^{max} (ft)	41.0	49.2	57.4	65.6	73.8	82.0	90.2	98.4	106.6	114.8	123.0	131.2	139.4	147.6	↔ (ft) ↓ (lb)
147.6		82.0						4,410	3,970	3,570	3,260	3,000	2,760	2,540	2,360	2,200	
139.4		84.0						4,410	4,060	3,660	3,350	3,060	2,820	2,600	2,430		
131.2		87.6						4,410	4,280	3,860	3,530	3,220	2,980	2,760			
123.0		95.8							4,410	4,280	3,900	3,590	3,310				
114.8		94.5							4,410	4,210	3,840	3,530					
106.6		97.1							4,410	4,340	3,970						
98.4		98.4							4,410	4,410							
90.2		90.2							4,410								
82.0		82.0						4,410									
73.8		73.8					4,410										
65.6		65.6				4,410											



R (ft)	ψ/ψ _ψ	RC ^{max} (ft)	41.0	49.2	57.4	65.6	73.8	82.0	90.2	98.4	106.6	114.8	123.0	131.2	139.4	147.6	↔ (ft) ↓ (lb)
147.6		44.3	8,820	7,780	6,500	5,580	4,850	4,250	3,790	3,400	3,060	2,800	2,560	2,340	2,160	1,980	
139.4		44.9	8,820	7,960	6,660	5,690	4,940	4,370	3,880	3,480	3,150	2,870	2,600	2,400	2,200		
131.2		46.9	8,820	8,330	6,990	5,970	5,200	4,590	4,080	3,660	3,310	3,020	2,760	2,540			
123.0		50.9	8,820	7,690	6,590	5,750	5,070	4,520	4,080	3,700	3,370	3,090					
114.8		50.2	8,820	7,560	6,480	5,640	4,980	4,450	4,010	3,640	3,310						
106.6		51.5	8,820	7,780	6,680	5,820	5,140	4,590	4,140	3,750							
98.4		52.2	8,820	7,890	6,770	5,910	5,200	4,650	4,190								
90.2		52.8	8,820	8,020	6,880	6,000	5,310	4,740									
82.0		52.8	8,820	8,000	6,860	6,000	5,290										
73.8		50.9	8,820	7,670	6,570	5,730											
65.6		51.2	8,820	7,720	6,610												

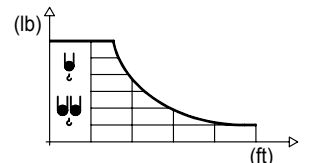
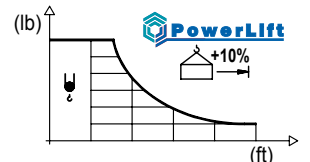


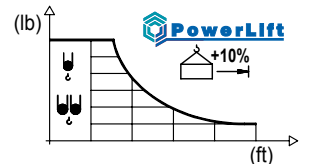
DIAGRAMA DE CARGAS POWERLIFT

Load chart PowerLift / Diagramme de charges PowerLift / Lastdiagramm PowerLift / Diagramma di carico PowerLift / Диаграмма распределения нагрузки PowerLift

R (ft)	ψ	RC ^{max} (ft)	41.0	49.2	57.4	65.6	73.8	82.0	90.2	98.4	106.6	114.8	123.0	131.2	139.4	147.6	↔ (ft) ↓ (lb)
147.6		88.7						4,410	4,320	3,920	3,570	3,260	3,020	2,800	2,600	2,430	
139.4		90.6							4,410	4,010	3,660	3,350	3,090	2,870	2,670		
131.2		94.7							4,410	4,210	3,840	3,530	3,260	3,020			
123.0		104.0								4,410	4,280	3,950	3,640				
114.8		102.7								4,410	4,230	3,880					
106.6		105.7								4,410	4,370						
98.4		98.4								4,410							
90.2		90.2								4,410							
82.0		82.0						4,410	4,410								
73.8		73.8					4,410										
65.6		65.6				4,410											



R (ft)	ψ/ψ _ψ	RC ^{max} (ft)	41.0	49.2	57.4	65.6	73.8	82.0	90.2	98.4	106.6	114.8	123.0	131.2	139.4	147.6	↔ (ft) ↓ (lb)
147.6		47.2	8,820	8,400	7,030	6,020	5,250	4,630	4,120	3,700	3,350	3,040	2,780	2,560	2,360	2,180	
139.4		48.1	8,820	8,600	7,190	6,170	5,380	4,740	4,210	3,790	3,440	3,130	2,870	2,620	2,430		
131.2		50.1	8,820	8,220	7,540	6,460	5,640	4,980	4,430	3,990	3,620	3,310	3,020	2,780			
123.0		54.8	8,820	8,380	7,190	6,260	5,560	4,960	4,450	4,060	3,700	3,400					
114.8		54.1	8,820	8,250	7,080	6,170	5,470	4,870	4,390	3,990	3,640						
106.6		55.6	8,820	8,510	7,300	6,370	5,640	5,030	4,540	4,120							
98.4		56.3	8,820	8,620	7,410	6,460	5,710	5,110	4,610								
90.2		57.1	8,820	8,770	7,540	6,570	5,820	5,200									
82.0		57.1	8,820	8,770	7,540	6,570	5,820										
73.8		55.1	8,820	8,420	7,230	6,310											
65.6		55.4	8,820	8,470	7,280												



MECANISMOS

Mechanisms / Mécanismes / Antriebe / Meccanismi / Механизмы

ES3-13-10
740 ft
21 hp

	I	II	III
ft/min	30	118	236
lb	4,410	4,410	2,425

	I	II	III
ft/min	15	59	118
lb	8,820	8,820	4,850

ES3-18-10
820 ft
29 hp

	I	II	III
ft/min	39	150	299
lb	4,410	4,410	2,425

	I	II	III
ft/min	20	75	150
lb	8,820	8,820	4,850

EFU2-11-10
740 ft
15 hp

ft/min	lb
98	4,410
131	3,310
197	2,200
243	1,760

ft/min	lb
49	8,820
66	6,610
98	4,410
121	3,530

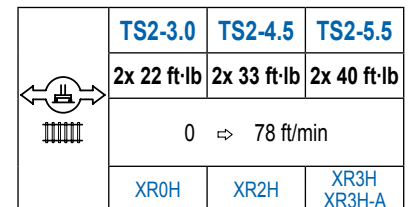
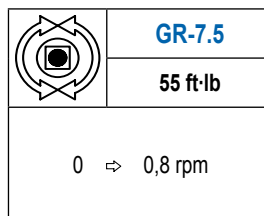
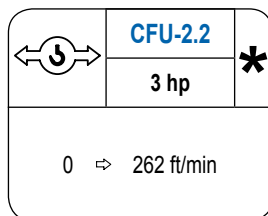
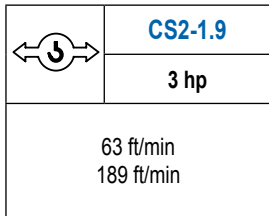
EFU2-18-10
820 ft
24 hp

ft/min	lb
177	4,410
197	3,310
230	2,200
262	1,760
302	

ft/min	lb
88	8,820
115	6,610
131	4,410
151	3,530

MECANISMOS

Mechanisms / Mécanismes / Antriebe / Meccanismi / Механизмы



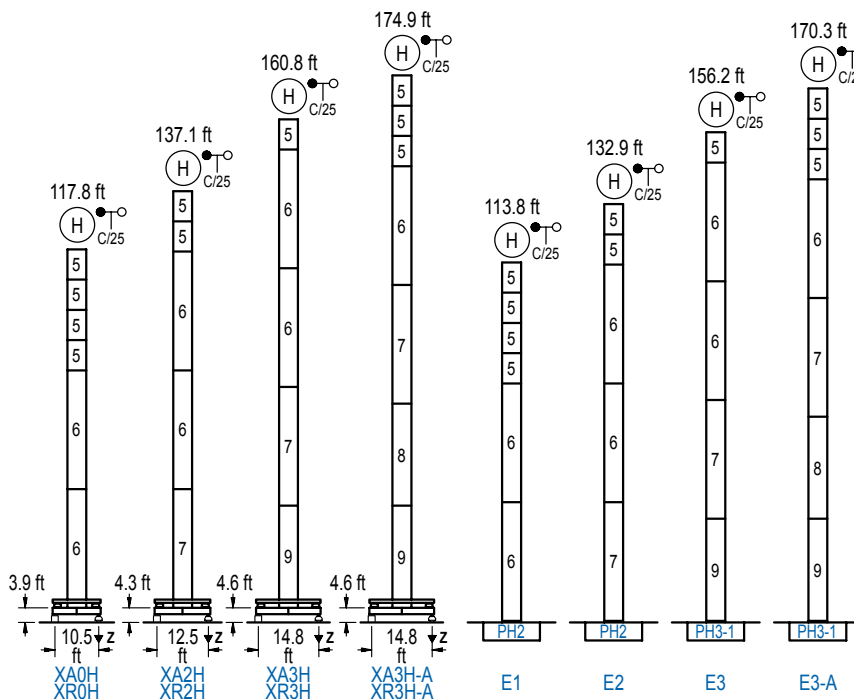
POTENCIA / POWER / PUISSANCE / LEISTUNG / POTENZA / МОЩНОСТЬ				Tensión de alimentación / Operating voltage / Tension de service / Betriebsspannung / Tensione di alimentazione / Напряжение источника питания	Generador / Generator / Générateur / Generator / Генератор
Elevación / Hoist / Levage / Hub / Sollevamento / Тип механизма (подъем)	Carro / Trolley / Chariot / Laufkatze / Carrello / Грузовая тележка	Giro / Slewing / Rotation / Drehbewegung / Rotazione / Поворот	Traslación / Travel / Translation / Verfahrbewegung / Traslazione / Ход	480 V 3ph 60 Hz	90 kVA 107 kVA 48 kVA 60 kVA
ES3-13-10	CS2-1.9	GR-7.5	(2x) TS2-3.0		
ES3-18-10			(2x) TS2-4.5		
EFU2-11-10	CFU-2.2		(2x) TS2-5.5		
EFU2-18-10					

Opcional / Optional / En option / Kaufoption / Opzionale / Опционально

ALTURAS BAJO GANCHO

Heights under hook / Hauteurs sous crochet / Hakenhöhen / Altezza sotto gancio / Высота под крюком

∅ 3.9 ft



n°	Ref.	∅	h
5	MH121	3.9	9.8
6	MH124-1	3.9	38.7
7	MH124A	3.9	38.7
8	MT123A	3.9	33.1
9	MT123	3.9	33.1

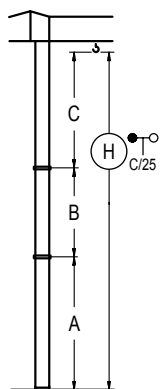
MH124-1 = 4x MH121 - 0.7 ft

	H = H + 0.7 ft
	H = H
	H = H
	H = H - 0.7 ft

Z máx.	En servicio / In operation / En service / In Betrieb / In servizio / При работе	XR0H..... 95 kip XR2H..... 93 kip XR3H..... 101 kip XR3H-A.. 112 kip
	Fuera de servicio / Out of service / Hors service / Ausser Betrieb / Fuori servizio / В стационарном состоянии	XR0H..... 110 kip XR2H..... 137 kip XR3H..... 159 kip XR3H-A.. 187 kip

GRÚA ARRIOSTRADA

Braced crane / Grue à entretoisement / Abgespannter Kran / Gru ancorata / Нарастиваемый кран

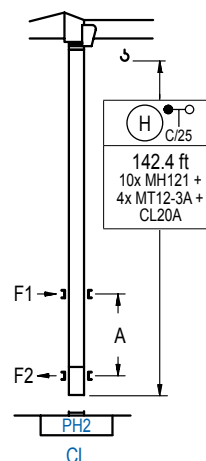


	XA0H	XA2H	XA3H	XA3H-A
A max	101.0	121.1	144.7	158.1
B max	- 68.9	- 68.9	- 68.9	- 68.9
C max	89.2	89.2	89.2	89.2
H max	190.3	259.2	209.6	278.5
	233.9	302.8	247.4	316.3

	E1	E2	E3	E3-A
A max	97.1	116.8	140.1	153.5
B max	- 68.9	- 68.9	- 68.9	- 68.9
C max	89.2	89.2	89.2	89.2
H max	186.4	255.2	206.0	247.9
	229.3	298.2	242.8	311.7

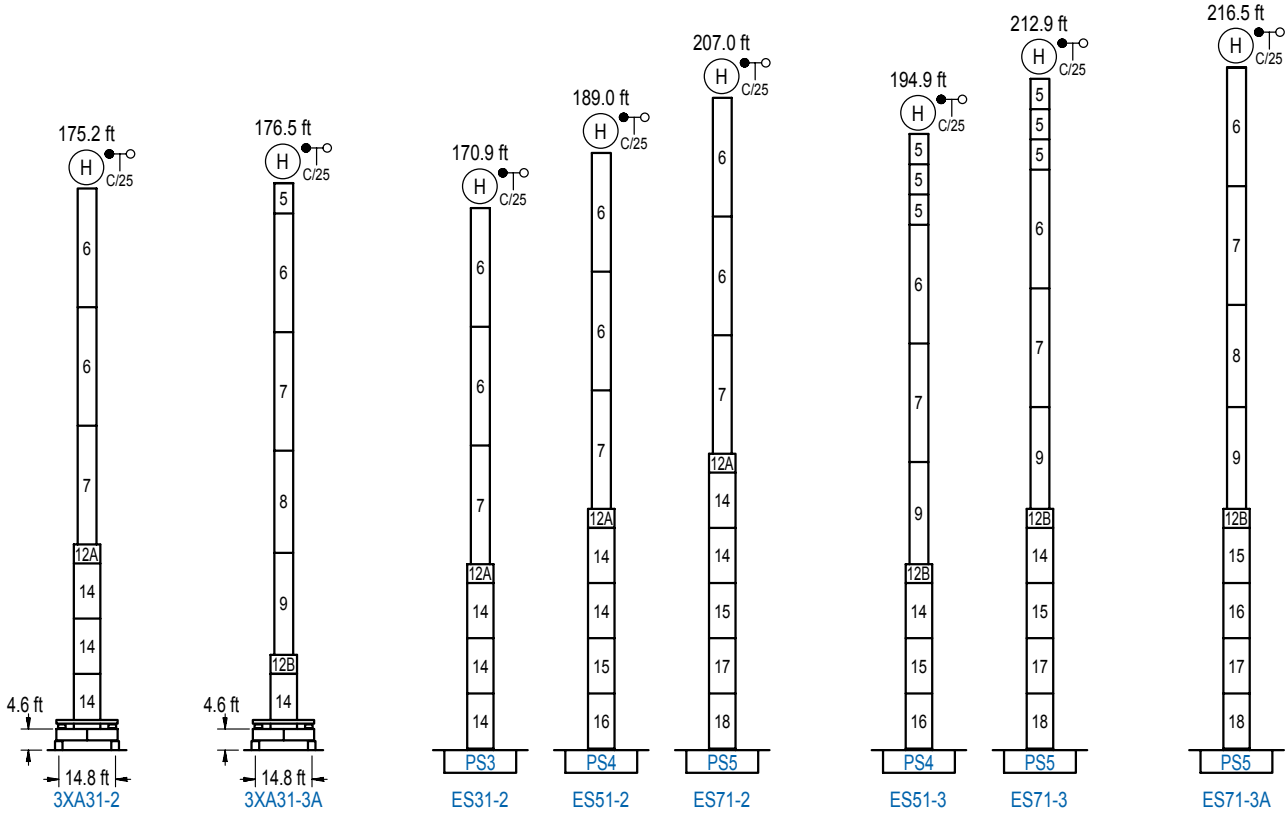
GRÚA TREPADORA

Internal climbing crane / Grue avec cage de télescopage intérieure / Kran mit klettern im Gebäude / Gru in rampante in cavedio / Кран с самоподъемом



n°	Ref.	∅	h
5	MH121	3.9	9.8
10	MT12-3A	3.9	9.5
11	CL20A	3.9	8.5

Otras zonas de viento, alturas superiores, arriostramientos o trepado interno consultar / Other wind zones, additional hook heights, tie frames or internal climbing on request / Autres zones de vent, des hauteurs supplémentaires, entretoisements ou grues avec cage de télescopage intérieure, sur demande / Andere Windzonen, weitere Hakenhöhen, Abspannungen zum Gebäude oder Klettern im Gebäude auf Anfrage / Per zone con velocità del vento particolari, altezze superiori, ancoraggi o rampante in cavedio, consultare il fabbricante / При других ветренных зонах, при большой высоте, привязках к зданию или наращивании крана внутри здания проконсультируйтесь с нами



n°	Ref.	∅	h	n°	Ref.	∅	h	n°	Ref.	∅	h
5	MH121	3.9	9.8	12A	TMS13/PMH12	5.2	3.3	14	S13	5.2	18.0
6	MH124-1	3.9	38.7	12B	TMS13/PMH13	5.2	3.3	15	TS14	5.2	18.0
7	MH124A	3.9	38.7					16	S14	5.2	18.0
8	MT123A	3.9	33.1					17	TS15	5.2	18.0
9	MT123	3.9	33.1					18	S15	5.2	18.0
MH124-1 = 4x MH121 - 0.7 ft											

Otras zonas de viento o alturas superiores consultar / Other wind zones or additional hook heights on request / Autres zones de vent ou des hauteurs supplémentaires sur demande / Andere Windzonen oder weitere Hakenhöhen auf Anfrage / Per zone con velocità del vento particolari o altezze superiori consultare il fabbricante / При других ветренных зонах о при большой высоте проконсультируйтесь с нами



Construcciones Metálicas COMANSA S. A.

Tel.: (34) 948 335 020 / Fax: (34) 948 330 810 / e-mail: info@comansa.com
Polígono Urbizkain E-31620 HUARTE-PAMPLONA.- SPAIN

DS.1307.05.IA 02/14 **5LC4510/8,820 lb**