

| R (max) ft | H1 ft | R (min) ft | H2 ft | Rfs ft |
|---------------|----------|---------------|----------|-----------|
| 196,9 | 59,7 | 18,4 | 210,0 | 78,7 |
| 180,4 | 58,4 | 16,1 | 193,2 | 72,2 |
| 164,0 | 54,5 | 16,4 | 176,5 | 65,6 |
| 147,6 | 50,5 | 13,8 | 160,1 | 62,3 |
| 131,2 | 46,6 | 13,1 | 143,4 | 62,3 |
| 114,8 | 42,7 | 12,8 | 126,3 | 62,3 |
| 98,4 | 38,4 | 10,5 | 109,9 | 62,3 |

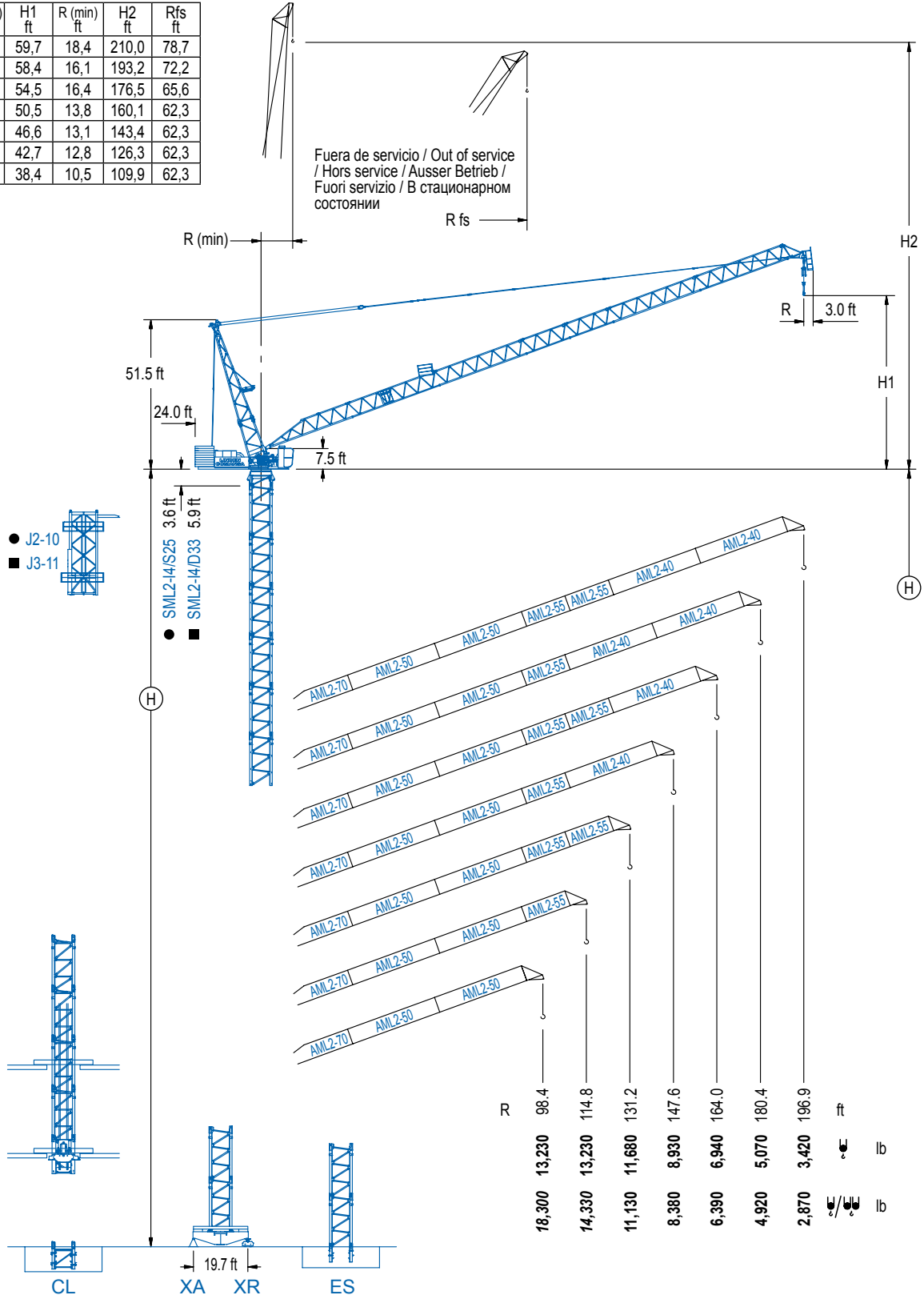
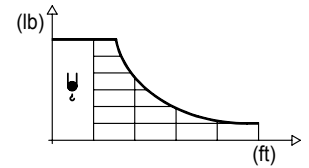


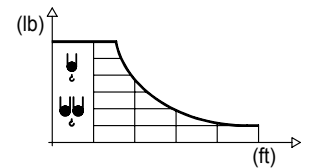
DIAGRAMA DE CARGAS

Load chart / Diagramme de charges / Lastdiagramm / Diagramma di carico / Диаграмма распределения нагрузки

| R (ft) | ↓ | RCmax (ft) | 32.8 | 49.2 | 65.6 | 82.0 | 98.4 | 114.8 | 131.2 | 147.6 | 164.0 | 180.4 | 196.9 | ↔ (ft) ↓ (lb) |
|-----------|---|---------------|------|------|------|--------|--------|--------|--------|-------|-------|-------|-------|------------------|
| 196.9 | | 93.5 | | | | 13,230 | 12,040 | 9,130 | 7,230 | 5,890 | 4,870 | 4,080 | 3,420 | |
| 180.4 | | 106.6 | | | | | 13,230 | 11,570 | 9,130 | 7,410 | 6,130 | 5,070 | | |
| 164.0 | | 116.5 | | | | | | 13,230 | 10,630 | 8,550 | 6,940 | | | |
| 147.6 | | 119.8 | | | | | | 13,230 | 11,200 | 8,930 | | | | |
| 131.2 | | 123.4 | | | | | | 13,230 | 11,680 | | | | | |
| 114.8 | | 114.8 | | | | | | 13,230 | | | | | | |
| 98.4 | | 98.4 | | | | | 13,230 | | | | | | | |

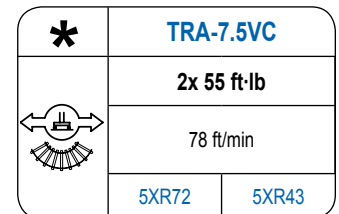
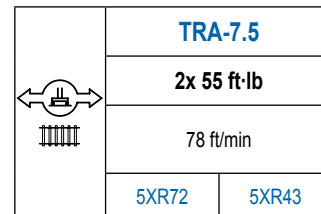
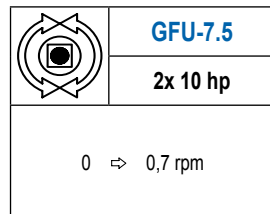
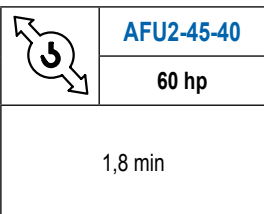
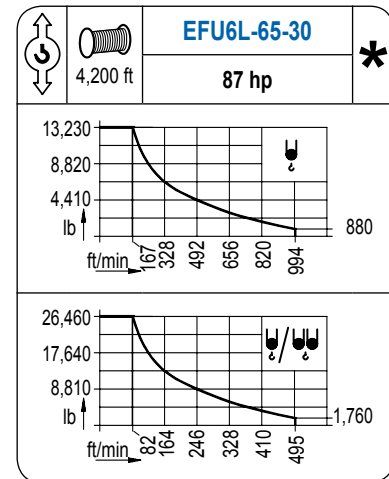
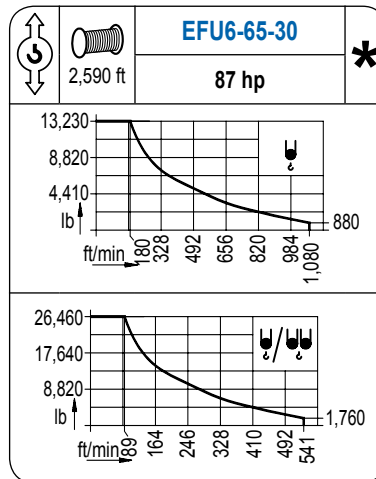
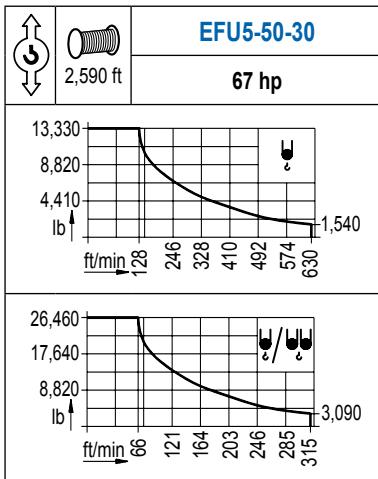


| R (ft) | ↓/↘ | RCmax (ft) | 32.8 | 49.2 | 65.6 | 82.0 | 98.4 | 114.8 | 131.2 | 147.6 | 164.0 | 180.4 | 196.9 | ↔ (ft) ↓ (lb) |
|-----------|-----|---------------|--------|--------|--------|--------|--------|--------|--------|-------|-------|-------|-------|------------------|
| 196.9 | | 44.3 | 26,460 | 22,350 | 14,530 | 10,580 | 8,180 | 6,570 | 5,420 | 4,560 | 3,880 | 3,330 | 2,870 | |
| 180.4 | | 66.3 | | | 26,460 | 17,530 | 12,740 | 9,830 | 7,890 | 6,480 | 5,400 | 4,520 | | |
| 164.0 | | 68.9 | | | 26,460 | 19,550 | 14,550 | 11,400 | 9,260 | 7,650 | 6,390 | | | |
| 147.6 | | 70.2 | | | 26,460 | 20,660 | 15,630 | 12,390 | 10,120 | 8,380 | | | | |
| 131.2 | | 73.2 | | | 26,460 | 22,310 | 17,090 | 13,650 | 11,130 | | | | | |
| 114.8 | | 76.8 | | | 26,460 | 23,920 | 18,210 | 14,330 | | | | | | |
| 98.4 | | 77.1 | | | 26,460 | 24,140 | 18,300 | | | | | | | |



MECANISMOS

Mechanisms / Mécanismes / Antriebe / Meccanismi / Механизмы



| POTENCIA / POWER / PUISSANCE / LEISTUNG / POTENZA / МОЩНОСТЬ | | | | Tensión de alimentación / Operating voltage / Tension de service / Betriebsspannung / Tensione di alimentazione / Напряжение источника питания | Generador / Generator / Générateur / Generator / Generatore / Генератор |
|--|--|--|---|--|---|
| Elevación / Hoist / Levage / Hub / Sollevamento / Тип механизма (подъем) | Abatimiento / Luffing / Releage / Einziehen / Brandeggio / Складывание | Giro / Slewing / Rotation / Drehbewegung / Rotazione / Поворот | Traslación / Travel / Translation / Verfahrbewegung / Traslazione / Ход | 480 V 3ph 60 Hz | 215 kVA 240 kVA 240 kVA |
| EFU5-50-30 | AFU2-45-40 | (2x) GFU-7.5 | (2x) TRA-7.5 | | |
| EFU6-65-30 | | | | | |
| EFU6L-65-30 | | | | | |

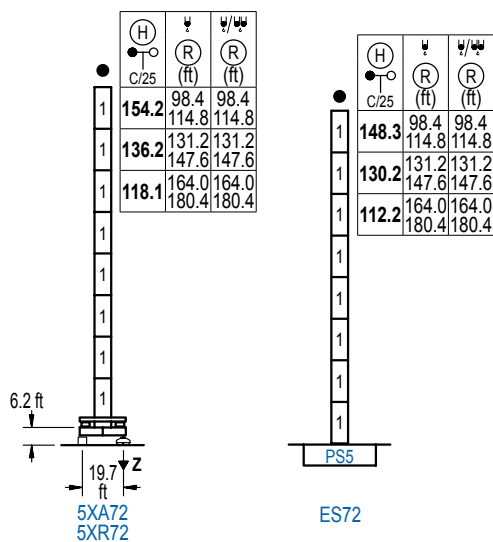
Opcional / Optional / En option / Kaufoption / Opzionale / Опционально

*

ALTURAS DE TORRE

Tower height / Hauteurs de tour / Turmhöhen / Altezza della torre / Высота башни

∅ 6.6 ft



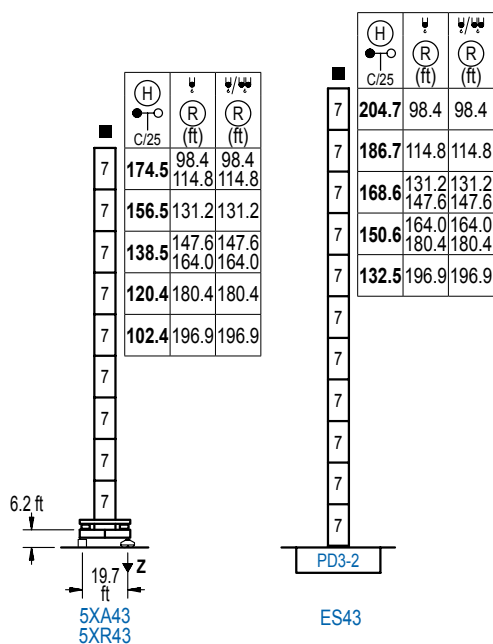
| n° | Ref. | ∅ | h |
|------------------|------|-----|------|
| 1 | S25 | 6.6 | 18.0 |
| 1x S25 = 1x S25M | | | |

| | | |
|---------------|--|-----------------|
| Z máx. | En servicio / In operation / En service / In Betrieb / In servizio / При работе | 5XR72.. 245 kip |
| | Fuera de servicio / Out of service / Hors service / Ausser Betrieb / Fuori servizio / В стационарном состоянии | 5XR72.. 317 kip |

ALTURAS DE TORRE

Tower height / Hauteurs de tour / Turmhöhen / Altezza della torre / Высота башни

∅ 8.2 ft



| n° | Ref. | ∅ | h |
|----|------|-----|------|
| 7 | D33 | 8.2 | 18.0 |

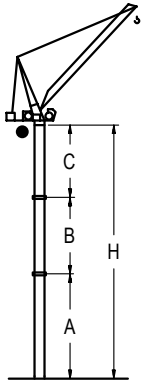
| | | |
|---------------|--|-----------------|
| Z máx. | En servicio / In operation / En service / In Betrieb / In servizio / При работе | 5XR43.. 262 kip |
| | Fuera de servicio / Out of service / Hors service / Ausser Betrieb / Fuori servizio / В стационарном состоянии | 5XR43.. 368 kip |

LCL

GRÚA ARRIOSTRADA

Braced crane / Grue à entretoisement / Abgespannter Kran / Gru ancorata / Наращиваемый кран

∅ 6.6 ft



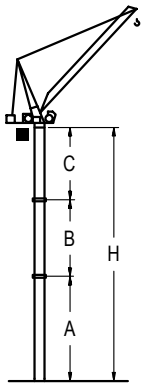
| | | 5XA72 | | | |
|-------|-----|---------------|---------------|--------------|-------|
| R | ψ | 180.4 / 164.0 | 147.6 / 131.2 | 114.8 / 98.4 | |
| (ft) | ψ/ψ | 180.4 / 164.0 | 147.6 / 131.2 | 114.8 / 98.4 | |
| A max | | 78.4 | 96.5 | 114.5 | |
| A min | | 78.4 | 96.5 | 78.4 | |
| B max | | 54.1 | 72.2 | - | 72.2 |
| B min | | 54.1 | 54.1 | - | 54.1 |
| C max | | 93.8 | 93.8 | 111.9 | 111.9 |
| H max | | 172.2 | 226.4 | 208.3 | 280.5 |

| | | ES72 | | | |
|-------|-----|---------------|---------------|--------------|-------|
| R | ψ | 180.4 / 164.0 | 147.6 / 131.2 | 114.8 / 98.4 | |
| (ft) | ψ/ψ | 180.4 / 164.0 | 147.6 / 131.2 | 114.8 / 98.4 | |
| A max | | 72.5 | 90.6 | 108.6 | |
| A min | | 72.5 | 90.6 | 72.5 | |
| B max | | 54.1 | 72.2 | - | 72.2 |
| B min | | 54.1 | 54.1 | - | 54.1 |
| C max | | 93.8 | 93.8 | 111.9 | 111.9 |
| H max | | 166.3 | 220.5 | 202.4 | 274.6 |

GRÚA ARRIOSTRADA

Braced crane / Grue à entretoisement / Abgespannter Kran / Gru ancorata / Наращиваемый кран

∅ 8.2 ft



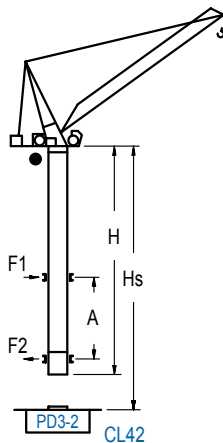
| | | 5XA43 | | | | | |
|-------|-----|-------|-------|---------------|-------|--------------|-------|
| R | ψ | 196.9 | 180.4 | 164.0 / 147.6 | 131.2 | 114.8 / 98.4 | |
| (ft) | ψ/ψ | 196.9 | 180.4 | 164.0 / 147.6 | 131.2 | 114.8 / 98.4 | |
| A max | | 60.4 | 78.4 | 96.5 | 114.5 | 132.5 | |
| A min | | 60.4 | 78.4 | 78.4 | 78.4 | 78.4 | |
| B max | | 54.1 | 72.2 | 90.2 | 90.2 | - | 108.3 |
| B min | | 54.1 | 54.1 | 54.1 | 54.1 | - | 54.1 |
| C max | | 96.1 | 114.2 | 132.2 | 132.2 | 45.8 | 132.2 |
| H max | | 156.5 | 210.6 | 228.7 | 318.9 | 246.7 | 373.0 |

| | | ES43 | | | | | |
|-------|-----|-------|---------------|---------------|-------|-------|-------|
| R | ψ | 196.9 | 180.4 / 164.0 | 147.6 / 131.2 | 114.8 | 98.4 | |
| (ft) | ψ/ψ | 196.9 | 180.4 / 164.0 | 147.6 / 131.2 | 114.8 | 98.4 | |
| A max | | 90.6 | 108.6 | 126.6 | 144.7 | 162.7 | |
| A min | | 72.5 | 72.5 | 72.5 | 72.5 | 72.5 | |
| B max | | 54.1 | 72.2 | 90.2 | 108.3 | - | 108.3 |
| B min | | 54.1 | 54.1 | 54.1 | 54.1 | - | 54.1 |
| C max | | 96.1 | 114.2 | 132.2 | 150.3 | 132.2 | 150.3 |
| H max | | 186.9 | 241.0 | 258.9 | 331.0 | 294.9 | 421.3 |

GRÚA TREPADORA

Internal climbing crane / Grue avec cage de télescopage intérieure / Kran mit klettern im Gebäude / Gru in rampante in cavedio / Кран с самоподъемом

∅ 6.6 ft



| (H) C/25 | ψ (R)(ft) | ψ/ψ (R)(ft) | Hs < 985 ft | A max (ft) | A min (ft) |
|--|----------------|----------------|-------------|------------|------------|
| 177.2 ft (4x S25 + TD23A + 4x D23A + CLD23A-1) | 98.4 114.8 | 98.4 114.8 | 82.0 | 36.1 | |
| 159.1 ft (3x S25 + TD23A + 4x D23A + CLD23A-1) | 131.2 | 131.2 | 73.2 | 36.1 | |
| 141.1 ft (2x S25 + TD23A + 4x D23A + CLD23A-1) | 147.6 164.0 | 147.6 164.0 | 64.3 | 36.1 | |
| 123.0 ft (S25 + TD23A + 4x D23A + CLD23A-1) | 180.4 | 180.4 | 55.1 | 32.8 | |
| 105.0 ft (TD23A + 4x D23A + CLD23A-1) | 196.9 | 196.9 | 46.3 | 32.8 | |

| nº | Ref. | ∅ | h |
|----|----------|-----|------|
| 1 | S25 | 6.6 | 18.0 |
| 2 | TD23A | 6.6 | 18.0 |
| 4 | D23A | 6.6 | 18.0 |
| 14 | CLD23A-1 | 6.6 | 11.2 |

1x S25 = 1x S25M

Otras zonas de viento, alturas superiores, arriostamientos o trepado interno consultar / Other wind zones, additional hook heights, tie frames or internal climbing on request / Autres zones de vent, des hauteurs supplémentaires, entretoisements ou grues avec cage de télescopage intérieure, sur demande / Andere Windzonen, weitere Hakenhöhen, Abspannungen zum Gebäude oder Klettern im Gebäude auf Anfrage / Per zone con velocità del vento particolari, altezze superiori, ancoraggi o rampante in cavedio, consultare il fabbricante / При других ветренных зонах, при большой высоте, привязках к зданию или наращивании крана внутри здания проконсультируйтесь с нами

LINDEN COMANSA
Construcciones Metálicas COMANSA S. A.

Tel.: (+34) 948 335 020 / Fax: (+34) 948 330 810 / E-mail: info@comansa.com
Polígono Urbizkain, Ctra. Aoiz nº1 31620, Huarte (Navarra), SPAIN

DS.1539.06.IA 11/16 LCL 190/26,460 lb

Reserva de modificaciones. Subject to modifications. Modifications réservées. Konstruktionsänderungen vorbehalten.
Il fabbricante si riserva la facoltà di apportare modifiche. Возможны изменения.