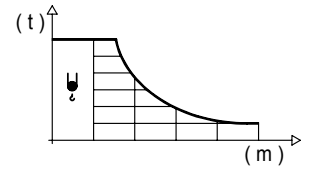




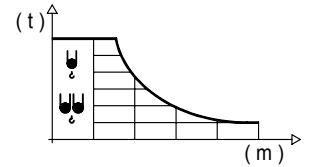
## DIAGRAMA DE CARGAS

Load chart / Diagramme de charges / Lastdiagramm / Diagramma di carico / Диаграмма распределения нагрузки

| R (m) | ψ | RCmax (m) | 15 | 20 | 25 | 30   | 35   | 40   | 45   | 50   | 55   | 60   | ↔(m)<br>↓(kg) |
|-------|---|-----------|----|----|----|------|------|------|------|------|------|------|---------------|
| 60    |   | 32,9      |    |    |    | 9000 | 7980 | 6210 | 5010 | 4140 | 3460 | 2900 |               |
| 55    |   | 34,1      |    |    |    | 9000 | 8600 | 6830 | 5590 | 4660 | 3900 |      |               |
| 50    |   | 35,3      |    |    |    |      | 9000 | 7380 | 6100 | 5100 |      |      |               |
| 45    |   | 36,6      |    |    |    |      | 9000 | 7800 | 6400 |      |      |      |               |
| 40    |   | 37,9      |    |    |    |      | 9000 | 8400 |      |      |      |      |               |
| 35    |   | 35,0      |    |    |    |      | 9000 |      |      |      |      |      |               |
| 30    |   | 30,0      |    |    |    | 9000 |      |      |      |      |      |      |               |

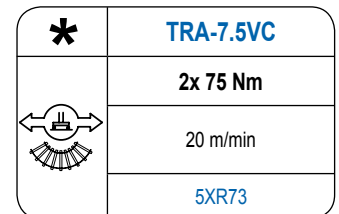
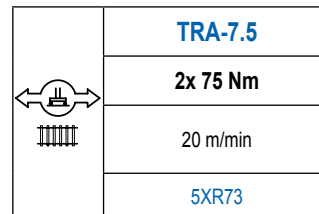
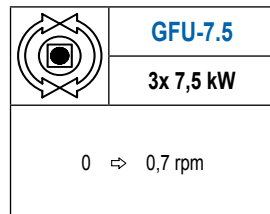
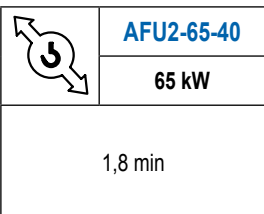
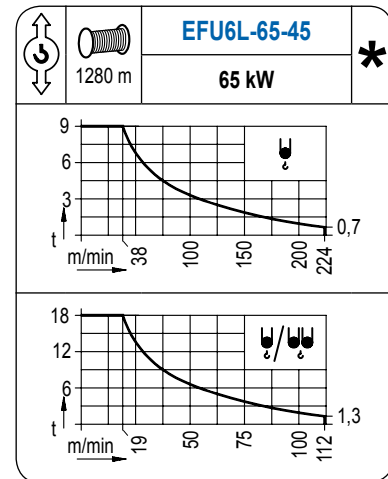
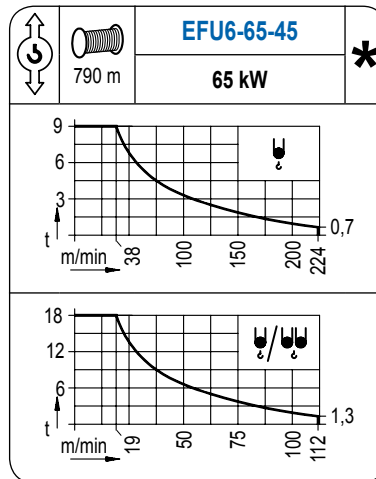
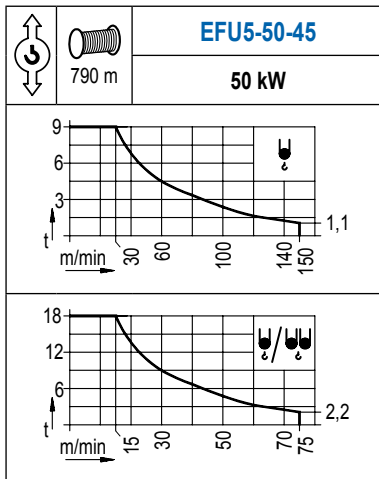


| R (m) | ψ/ψ₁/ψ₂ | RCmax (m) | 15    | 20    | 25    | 30    | 35    | 40   | 45   | 50   | 55   | 60   | ↔(m)<br>↓(kg) |
|-------|---------|-----------|-------|-------|-------|-------|-------|------|------|------|------|------|---------------|
| 60    |         | 18,0      | 18000 | 14790 | 10120 | 7590  | 6000  | 4910 | 4110 | 3500 | 3010 | 2600 |               |
| 55    |         | 18,5      | 18000 | 15860 | 11260 | 8630  | 6940  | 5750 | 4860 | 4170 | 3600 |      |               |
| 50    |         | 19,1      | 18000 | 16840 | 12310 | 9610  | 7820  | 6540 | 5580 | 4800 |      |      |               |
| 45    |         | 20,0      |       | 18000 | 13300 | 10460 | 8550  | 7170 | 6100 |      |      |      |               |
| 40    |         | 21,1      |       | 18000 | 14560 | 11620 | 9600  | 8100 |      |      |      |      |               |
| 35    |         | 21,3      |       | 18000 | 15050 | 12270 | 10300 |      |      |      |      |      |               |
| 30    |         | 22,0      |       | 18000 | 15740 | 13000 |       |      |      |      |      |      |               |



## MECANISMOS

Mechanisms / Mécanismes / Antriebe / Meccanismi / Механизмы



| POTENCIA / POWER / PUISSANCE / LEISTUNG / POTENZA / МОЩНОСТЬ             |  |  |   | Tensión de alimentación / Operating voltage / Tension de service / Betriebsspannung / Tensione di alimentazione / Напряжение источника питания |         |
|--|--|--|---|--|---------|
| Elevación / Hoist / Levage / Hub / Sollevamento / Тип механизма (подъем) | Abatimiento / Luffing / Releage / Einziehen / Brandeggio / Складывание | Giro / Slewing / Rotation / Drehbewegung / Rotazione / Поворот | Traslación / Travel / Translation / Verfahrbewegung / Traslazione / Ход | Generador / Generator / Générateur / Generator / Generatore / Генератор  | 260 kVA |
| EFU5-50-45   | AFU2-65-40   | (3x) GFU-7.5   | (2x) TRA-7.5  | 400 V  | 280 kVA |
| EFU6-65-45   |  |  |   | 3ph  | 280 kVA |
| EFU6L-65-45  |  |  |   | 50 Hz  | 280 kVA |

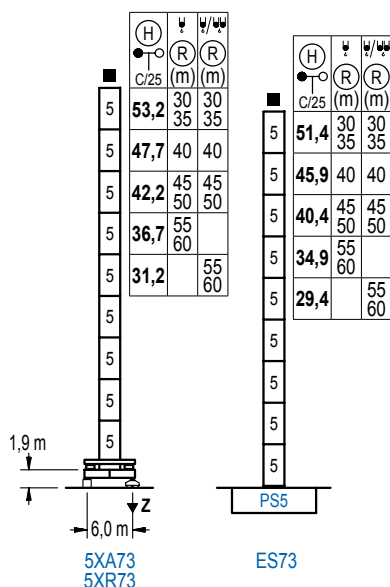
Opcional / Optional / En option / Kaufoption / Opzionale / Опционально

**\***

## ALTURAS DE TORRE

Tower height / Hauteurs de tour / Turmhöhen / Altezza della torre / Высота башни

∅ 2,5 m



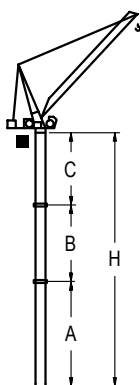
| n° | Ref. | ∅   | h   |
|----|------|-----|-----|
| 5  | S35  | 2,5 | 5,5 |

| Z máx. | En servicio / In operation / En service / In Betrieb / In servizio / При работе                                | 5XR73..... 133 t |
|--------|--|------------------|
|        | Fuera de servicio / Out of service / Hors service / Ausser Betrieb / Fuori servizio / В стационарном состоянии | 5XR73..... 166 t |

## GRÚA ARRIOSTRADA

Braced crane / Grue à entretoisement / Abgespannter Kran / Gru ancorata / Нарцываемый кран

∅ 2,5 m



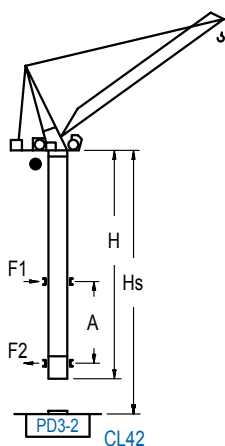
|       |     | 5XA73   |         |         |      |         |
|-------|-----|---------|---------|---------|------|---------|
| R     | ∅   | -       | 60 / 55 | 50 / 45 | 40   | 35 / 30 |
| (m)   | ∅/∅ | 60 / 55 | -       | 50 / 45 | 40   | 35 / 30 |
| A max |     | -       | 23,9    | 29,4    | 34,9 | 40,4    |
| A min |     | -       | 23,9    | 23,9    | 23,9 | 23,9    |
| B max |     | -       | 16,5    | 16,5    | -    | 22,0    |
| B min |     | -       | 16,5    | 16,5    | -    | 16,5    |
| C max |     | -       | 29,3    | 29,3    | 34,8 | 34,8    |
| H max |     | -       | 53,2    | 69,7    | 58,7 | 75,2    |

|       |     | ES73    |         |         |      |         |
|-------|-----|---------|---------|---------|------|---------|
| R     | ∅   | -       | 60 / 55 | 50 / 45 | 40   | 35 / 30 |
| (m)   | ∅/∅ | 60 / 55 | -       | 50 / 45 | 40   | 35 / 30 |
| A max |     | -       | 22,1    | 27,6    | 33,1 | 38,6    |
| A min |     | -       | 22,1    | 22,1    | 22,1 | 22,1    |
| B max |     | -       | 16,5    | 16,5    | -    | 22,0    |
| B min |     | -       | 16,5    | 16,5    | -    | 16,5    |
| C max |     | -       | 29,3    | 29,3    | 34,8 | 34,8    |
| H max |     | -       | 51,4    | 67,9    | 56,9 | 73,4    |

## GRÚA TREPADORA

Internal climbing crane / Grue avec cage de télescopage intérieure / Kran mit klettern im Gebäude / Gru in rampante in cavedio / Кран с самоподъемом

∅ 2,0 m



| H<br>C/25                             | ∅ (R)(m) | ∅ (R)(m) | Hs < 300 m |           |
|---------------------------------------|----------|----------|------------|-----------|
|                                       |          |          | A max (m)  | A min (m) |
| 48,5<br>(4x D23 + 4x D23A + CLD23A-1) | 30<br>35 | 30<br>35 | 19,6       | 9,0       |
| 43,0<br>(3x D23 + 4x D23A + CLD23A-1) | 40       | 40       | 16,8       | 9,0       |
| 37,5<br>(2x D23 + 4x D23A + CLD23A-1) | 45<br>50 | 45<br>50 | 14,1       | 9,0       |
| 32,0<br>(D23 + 4x D23A + CLD23A-1)    | 55<br>60 |          | 11,4       | 10,0      |
| 26,5<br>(4x D23A + CLD23A-1)          |          | 55<br>60 | 9,0        | 9,0       |

| n° | Ref.     | ∅   | h   |
|----|----------|-----|-----|
| 3  | D23      | 2,0 | 5,5 |
| 4  | D23A     | 2,0 | 5,5 |
| 14 | CLD23A-1 | 2,0 | 3,4 |

Otras zonas de viento, alturas superiores, arriostramientos o trepado interno consultar / Other wind zones, additional hook heights, tie frames or internal climbing on request / Autres zones de vent, des hauteurs supplémentaires, entretoisements ou grues avec cage de télescopage intérieure, sur demande / Andere Windzonen, weitere Hakenhöhen, Abspannungen zum Gebäude oder Klettern im Gebäude auf Anfrage / Per zone con velocità del vento particolari, altezze superiori, ancoraggi o rampante in cavedio, consultare il fabbricante / При других ветренных зонах, при большой высоте, привязках к зданию или наращивании крана внутри здания проконсультируйтесь с нами

**LINDEN COMANSA**

Construcciones Metálicas COMANSA S. A.

Tel.: (+34) 948 335 020 / Fax: (+34) 948 330 810 / E-mail: info@comansa.com  
Polígono Urbizkain, Ctra. Aoiz nº1 31620, Huarte (Navarra), SPAIN

DS.1539.09

02/16

LCL 280/18 t

Reserva de modificaciones. Subject to modifications. Modifications réservées. Konstruktionsänderungen vorbehalten.  
Il fabbricante si riserva la facoltà di apportare modifiche. Возможны изменения.

LCL

