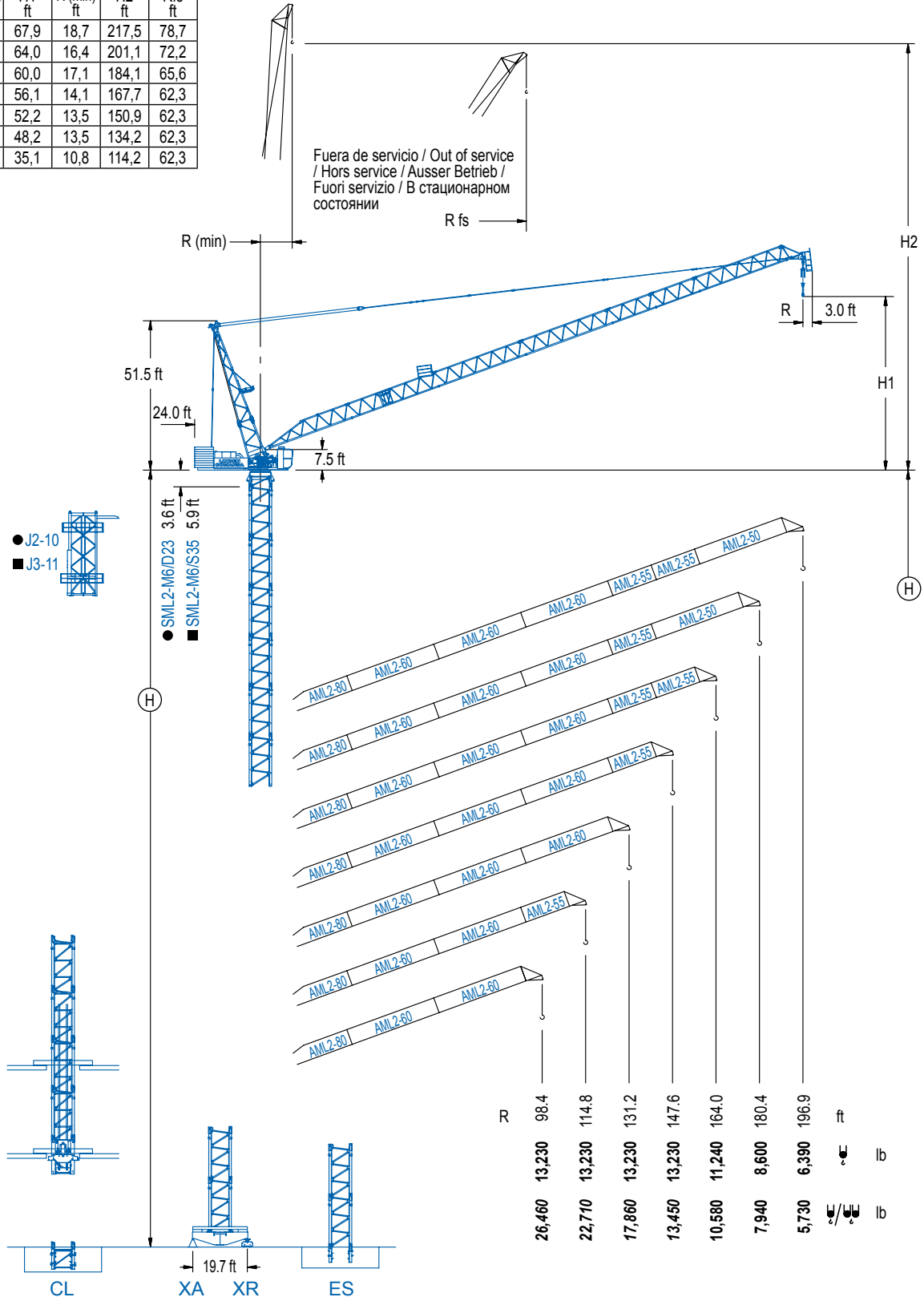


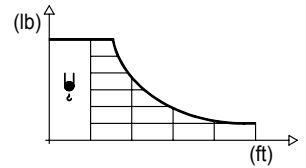
R (max) ft	H1 ft	R (min) ft	H2 ft	Rfs ft
<b>196,9</b>	67,9	18,7	217,5	78,7
<b>180,4</b>	64,0	16,4	201,1	72,2
<b>164,0</b>	60,0	17,1	184,1	65,6
<b>147,6</b>	56,1	14,1	167,7	62,3
<b>131,2</b>	52,2	13,5	150,9	62,3
<b>114,8</b>	48,2	13,5	134,2	62,3
<b>98,4</b>	35,1	10,8	114,2	62,3



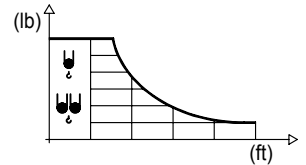
## DIAGRAMA DE CARGAS

Load chart / Diagramme de charges / Lastdiagramm / Diagramma di carico / Диаграмма распределения нагрузки

R (ft)	↕	RCmax (ft)	49.2	65.6	82.0	98.4	114.8	131.2	147.6	164.0	180.4	196.9	↔(ft) ↕(lb)
196.9		135.5						13,230	11,240	9,240	7,670	6,390	
180.4		141.4						13,230	12,300	10,250	8,600		
164.0		147.0						13,230	13,140	11,240			
147.6		147.6							13,230				
131.2		131.2						13,230					
114.8		114.8					13,230						
98.4		98.4				13,230							

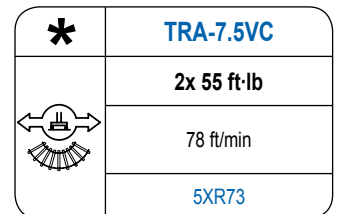
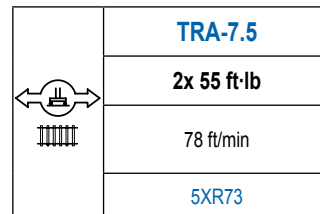
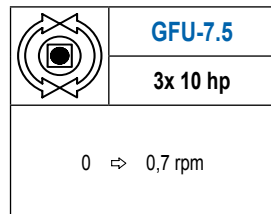
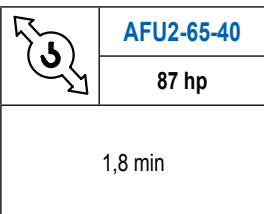
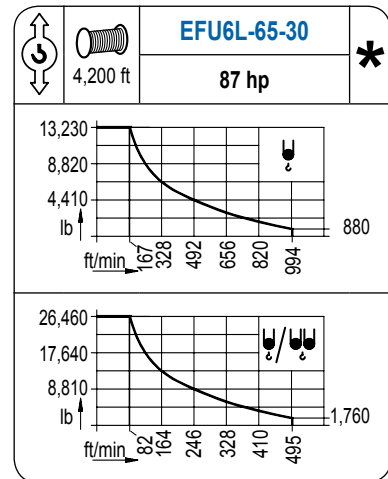
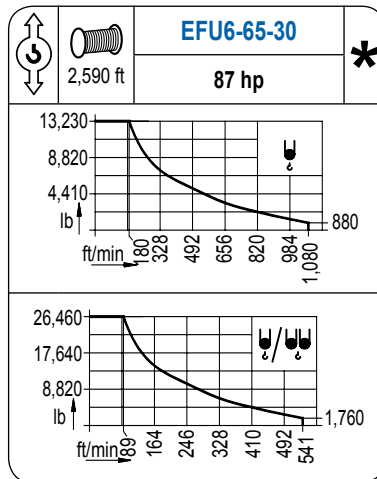
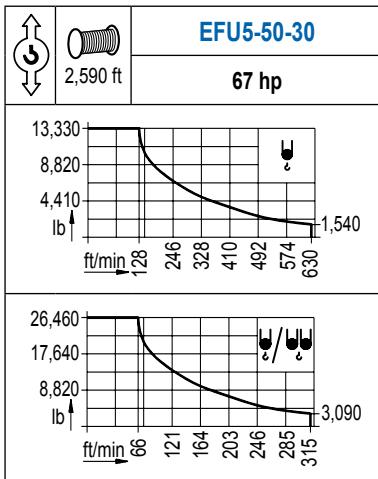


R (ft)	↕/↕	RCmax (ft)	49.2	65.6	82.0	98.4	114.8	131.2	147.6	164.0	180.4	196.9	↔(ft) ↕(lb)
196.9		86.3			26,460	20,280	15,210	11,990	9,740	8,090	6,810	5,730	
180.4		89.2			26,460	22,200	17,060	13,670	11,270	9,440	7,940		
164.0		92.2			26,460	23,810	18,670	15,170	12,610	10,580			
147.6		95.1			26,460	25,110	19,890	16,230	13,450				
131.2		98.1			26,460	26,340	21,450	17,860					
114.8		101.4				26,460	22,710						
98.4		98.4				26,460							



## MECANISMOS

Mechanisms / Mécanismes / Antriebe / Meccanismi / Механизмы



POTENCIA / POWER / PUISSANCE / LEISTUNG / POTENZA / МОЩНОСТЬ				Tensión de alimentación / Operating voltage / Tension de service / Betriebsspannung / Tensione di alimentazione / Напряжение источника питания	
Elevación / Hoist / Levage / Hub / Sollevamento / Тип механизма (подъем)	Abatimiento / Luffing / Releage / Einziehen / Brandeggio / Складывание	Giro / Slewing / Rotation / Drehbewegung / Rotazione / Поворот	Traslación / Travel / Translation / Verfahrbewegung / Traslazione / Ход	480 V	Generator / Generator / Générateur / Generator / Generatore / Генератор
EFU5-50-30	AFU2-65-40	(3x) GFU-7.5	(2x) TRA-7.5	3ph	260 kVA
EFU6-65-30				60 Hz	280 kVA
EFU6L-65-30				280 kVA	

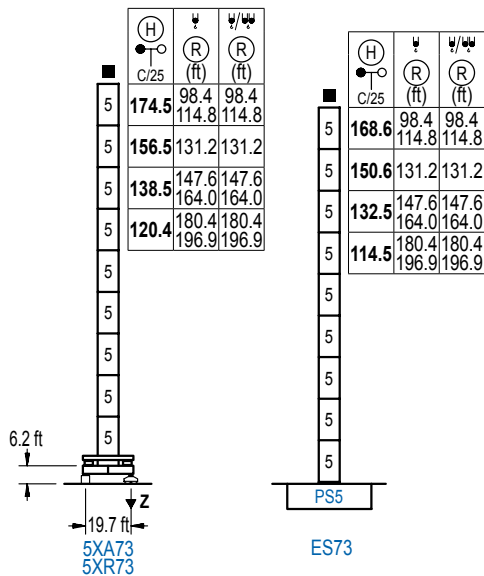
Opcional / Optional / En option / Kaufoption / Opzionale / Опционально

**\***

## ALTURAS DE TORRE

Tower height / Hauteurs de tour / Turmhöhen / Altezza della torre / Высота башни

∅ 8.2 ft



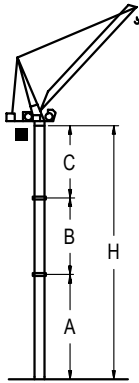
n°	Ref.	∅	h
5	S35	8.2	18.0

Z máx.	En servicio / In operation / En service / In Betrieb / In servizio / При работе	5XR73.. 293 kip
	Fuera de servicio / Out of service / Hors service / Ausser Betrieb / Fuori servizio / В стационарном состоянии	5XR73.. 366 kip

## GRÚA ARRIOSTRADA

Braced crane / Grue à entretoisement / Abgespannter Kran / Gru ancorata / Нарцываемый кран

∅ 8.2 ft



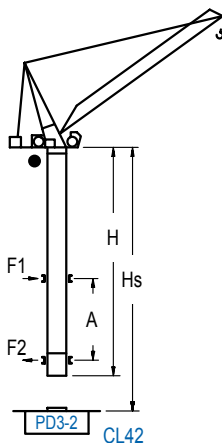
		5XA73			
R	∅	196.9 / 180.4	164.0 / 147.6	131.2	114.8 / 98.4
(ft)	∅/∅	196.9 / 180.4	164.0 / 147.6	131.2	114.8 / 98.4
A max		78.4	96.5	114.5	132.5
A min		78.4	78.4	78.4	78.4
B max		-	54.1	-	72.2
B min		-	54.1	-	54.1
C max		96.1	96.1	96.1	114.2
H max		174.5	228.7	192.6	246.7

		ES73			
R	∅	196.9 / 180.4	164.0 / 147.6	131.2	114.8 / 98.4
(ft)	∅/∅	196.9 / 180.4	164.0 / 147.6	131.2	114.8 / 98.4
A max		72.5	90.6	108.6	126.6
A min		72.5	72.5	72.5	72.5
B max		-	54.1	-	72.2
B min		-	54.1	-	54.1
C max		96.1	96.1	96.1	114.2
H max		168.6	222.8	186.7	240.8

## GRÚA TREPADORA

Internal climbing crane / Grue avec cage de télescope intérieure / Kran mit klettern im Gebäude / Gru in rampante in cavedio / Кран с самоподъемом

∅ 6.6 ft



H (ft)	C/25	R (ft)	W/W (ft)	Hs < 985 ft	
				A max (ft)	A min (ft)
159.1 ft	(4x D23 + 4x D23A + CLD23A-1)	98.4 / 114.8	98.4 / 114.8	64.3	29.5
141.1 ft	(3x D23 + 4x D23A + CLD23A-1)	131.2	131.2	55.1	29.5
123.0 ft	(2x D23 + 4x D23A + CLD23A-1)	147.6 / 164.0	147.6 / 164.0	46.3	29.5
105.0 ft	(D23 + 4x D23A + CLD23A-1)	180.4 / 196.9	180.4 / 196.9	37.4	32.8

n°	Ref.	∅	h
3	D23	6.6	18.0
4	D23A	6.6	18.0
14	CLD23A-1	6.6	11.2

Otras zonas de viento, alturas superiores, arriostramientos o trepado interno consultar / Other wind zones, additional hook heights, tie frames or internal climbing on request / Autres zones de vent, des hauteurs supplémentaires, entretoisements ou grues avec cage de télescope intérieure, sur demande / Andere Windzonen, weitere Hakenhöhen, Abspannungen zum Gebäude oder Klettern im Gebäude auf Anfrage / Per zone con velocità del vento particolari, altezze superiori, ancoraggi o rampante in cavedio, consultare il fabbricante / При других ветренных зонах, при большой высоте, привязках к зданию или наращивании крана внутри здания проконсультируйтесь с нами

**LINDEN COMANSA**

Construcciones Metálicas COMANSA S. A.

Tel.: (+34) 948 335 020 / Fax: (+34) 948 330 810 / E-mail: info@comansa.com  
Polígono Urbizkain, Ctra. Aoiz nº1 31620, Huarte (Navarra), SPAIN

DS.1539.08.IA 11/16 LCL 280/26,460 lb

Reserva de modificaciones. Subject to modifications. Modifications réservées. Konstruktionsänderungen vorbehalten.  
Il fabbricante si riserva la facoltà di apportare modifiche. Возможны изменения.

LCL

