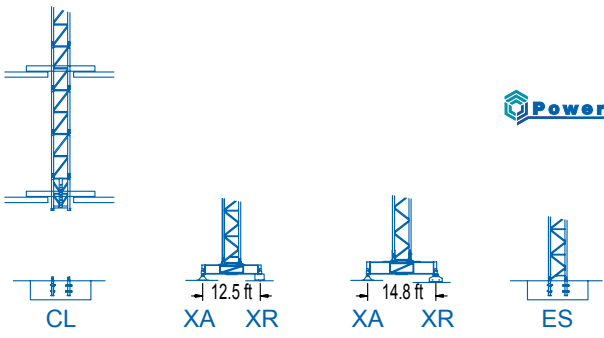


(H) $H = H - 0.7 \text{ ft}$



R	ft	lb
98.4	6,390	6,160
114.8	5,510	6,060
123.0	4,960	5,450
131.2	4,630	5,090
139.4	4,190	4,610
147.6	3,750	4,120
155.8	3,310	3,640
164.0	3,090	3,400
172.2	2,650	2,910



LC 1100

DIAGRAMA DE CARGAS

Load chart / Diagramme de charges / Lastdiagramm / Diagramma di carico / Диаграмма распределения нагрузки

R (ft)																			
172.2	42.0	45.9	52.5	59.1	65.6	73.5	81.7	91.9	98.4	105.0	114.8	123.0	131.2	139.4	147.6	155.8	164.0	172.2	ft
	13,230	11,880	10,100	8,730	7,630	6,610	6,610	5,750	5,310	4,920	4,410	4,060	3,750	3,480	3,240	3,020	2,820	2,650	lb
164.0	44.9	45.9	52.5	59.1	65.6	78.4	87.3	91.9	98.4	105.0	114.8	123.0	131.2	139.4	147.6	155.8	164.0	ft	
	13,230	12,830	10,930	9,460	8,290	6,610	6,610	6,240	5,750	5,340	4,810	4,410	4,080	3,790	3,530	3,280	3,090	lb	
155.8	44.9	45.9	52.5	59.1	65.6	78.4	87.6	91.9	98.4	105.0	114.8	123.0	131.2	139.4	147.6	155.8	ft		
	13,230	12,850	10,930	9,480	8,310	6,610	6,610	6,260	5,780	5,360	4,810	4,430	4,100	3,790	3,550	3,310	lb		
147.6	46.9	52.5	59.1	65.6	72.2	82.0	91.5	98.4	105.0	114.8	123.0	131.2	139.4	147.6	ft				
	13,230	11,530	9,990	8,770	7,780	6,610	6,610	6,080	5,640	5,070	4,670	4,320	4,010	3,750	lb				
139.4	48.2	52.5	59.1	65.6	72.2	84.6	94.8	98.4	105.0	114.8	123.0	131.2	139.4	ft					
	13,230	11,950	10,360	9,100	8,090	6,610	6,610	6,330	5,860	5,290	4,870	4,500	4,190	lb					
131.2	49.2	52.5	59.1	65.6	72.2	82.0	86.3	96.8	105.0	114.8	123.0	131.2	ft						
	13,230	12,240	10,630	9,350	8,290	7,050	6,610	6,610	6,020	5,420	5,000	4,630	lb						
123.0	48.9	52.5	59.1	65.6	72.2	82.0	85.6	96.1	105.0	114.8	123.0	ft							
	13,230	12,130	10,520	9,260	8,220	6,990	6,610	6,610	5,970	5,380	4,960	lb							
114.8	49.9	52.5	59.1	65.6	72.2	82.0	87.3	98.1	105.0	114.8	ft								
	13,230	12,390	10,760	9,460	8,400	7,140	6,610	6,610	6,130	5,510	lb								
98.4	48.2	52.5	59.1	65.6	72.2	84.6	95.5	98.4	ft										
	13,230	11,970	10,380	9,130	8,090	6,610	6,610	6,390	lb										

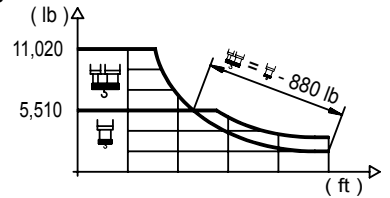


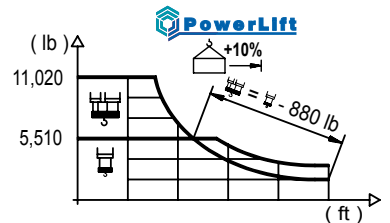


DIAGRAMA DE CARGAS POWERLIFT

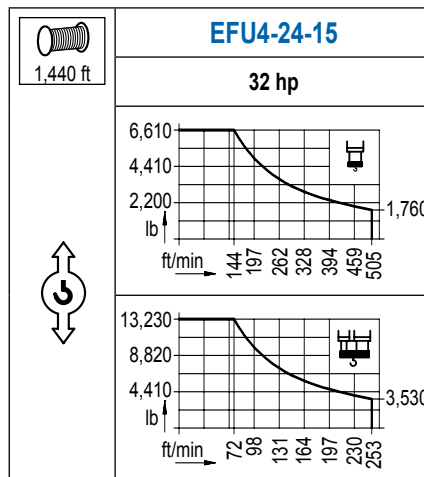
Load chart PowerLift / Diagramme de charges PowerLift / Lastdiagramm PowerLift / Diagramma di carico PowerLift / Диаграмма распределения нагрузки PowerLift

R (ft)																		
172.2	44.0	52.5	59.1	65.6	76.8	87.6	91.9	98.4	105.0	114.8	123.0	131.2	139.4	147.6	155.8	164.0	172.2	ft
	13,230	10,690	9,260	8,110	6,610	6,610	6,260	5,780	5,360	4,810	4,430	4,100	3,790	3,550	3,310	3,110	2,910	lb
164.0	47.2	52.5	59.1	65.6	75.5	82.7	94.2	98.4	105.0	114.8	123.0	131.2	139.4	147.6	155.8	164.0	ft	
	13,230	11,640	10,100	8,860	7,430	6,610	6,610	6,280	5,820	5,250	4,830	4,480	4,140	3,880	3,620	3,400	lb	
155.8	45.9	52.5	59.1	65.6	75.5	82.7	94.5	98.4	105.0	114.8	123.0	131.2	139.4	147.6	155.8	ft		
	13,230	11,680	10,140	8,910	7,470	6,610	6,610	6,310	5,840	5,270	4,850	4,500	4,170	3,880	3,640	lb		
147.6	49.5	59.1	65.6	75.5	82.0	86.9	99.1	105.0	114.8	123.0	131.2	139.4	147.6	ft				
	13,230	10,710	9,440	7,910	7,120	6,610	6,610	6,170	5,560	5,140	4,760	4,410	4,120	lb				
139.4	51.2	59.1	65.6	75.5	82.0	89.9	102.4	105.0	114.8	123.0	131.2	139.4	ft					
	13,230	11,180	9,830	8,270	7,450	6,610	6,610	6,440	5,800	5,340	4,960	4,610	lb					
131.2	52.5	59.1	65.6	75.5	82.0	92.2	105.0	108.3	114.8	123.0	131.2	ft						
	13,230	11,490	10,100	8,510	7,670	6,610	6,610	6,370	5,950	5,490	5,090	lb						
123.0	51.8	59.1	65.6	75.5	82.0	91.2	104.0	105.0	114.8	123.0	ft							
	13,230	11,380	10,010	8,420	7,580	6,610	6,610	6,550	5,910	5,450	lb							
114.8	53.1	59.1	65.6	75.5	82.0	91.9	93.2	106.6	114.8	ft								
	13,230	11,680	10,270	8,660	7,800	6,750	6,610	6,610	6,060	lb								
98.4	51.8	59.1	65.6	75.5	82.0	90.9	98.4	ft										
	13,230	11,310	9,960	8,380	7,540	6,610	6,610	lb										




MECANISMOS

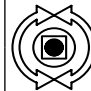
Mechanisms / Mécanismes / Antriebe / Meccanismi / Механизмы

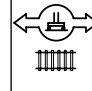


MECANISMOS

Mechanisms / Mécanismes / Antriebe / Meccanismi / Механизмы

	CFU-4.0
	5.4 hp
0 ⇔ 295 ft/min	

	GFU-5.5
	2x 7.4 hp
0 ⇔ 0,7 rpm	

	TS2-4.5	TS2-5.5
	2x 33 ft-lb	2x 40 ft-lb
0 ⇔ 78 ft/min		
	XR2H	XR3H

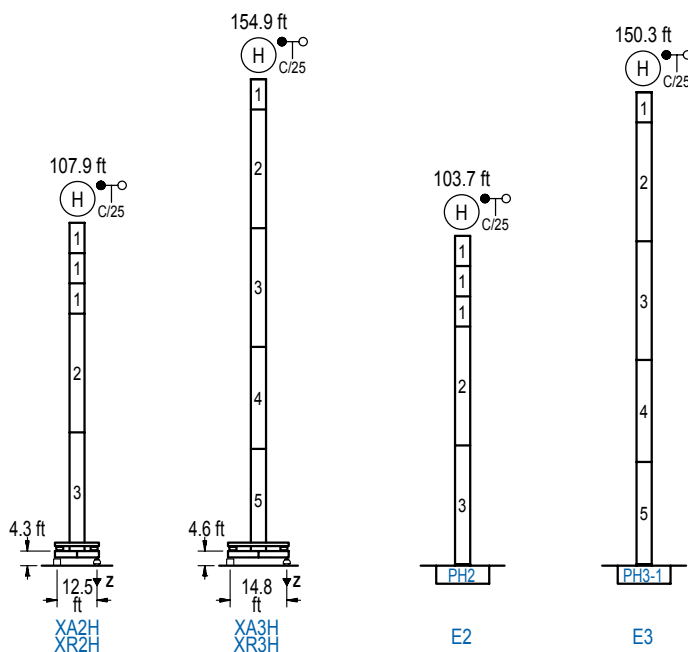
POTENCIA / POWER / PUISSANCE / LEISTUNG / POTENZA / МОЩНОСТЬ				Tensión de alimentación / Operating voltage / Tension de service / Betriebsspannung / Tensione di alimentazione / Напряжение источника питания	Generador / Generator / Générateur / Generator / Generatore / Генератор
Elevación / Hoist / Levage / Hub / Sollevamento / Тип механизма (подъем)	Carro / Trolley / Chariot / Laufkatze / Carrelo / Грузовая тележка	Giro / Slewing / Rotation / Drehbewegung / Rotazione / Поворот	Traslación / Travel / Translation / Verfahrbewegung / Traslazione / Ход	480 V 3ph 60 Hz	75 kVA
EFU4-24-15	CFU-4.0	(2x) GFU-5.5	(2x) TS2-4.5 (2x) TS2-5.5		

Opcional / Optional / En option / Kaufoption / Opzionale / Опционально
*

ALTURAS BAJO GANCHO

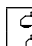
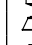
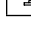

Heights under hook / Hauteurs sous crochet / Hakenhöhen / Altezza sotto gancio / Высота под крюком

∅ 3.9 ft



n°	Ref.	∅	h
1	MH121	3.9	9.8
2	MH124-1	3.9	38.7
3	MH124A	3.9	38.7
4	MT123A	3.9	33.1
5	MT123	3.9	33.1

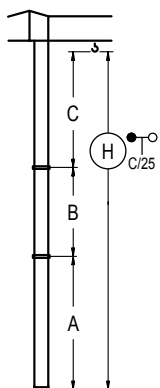
MH124-1 = 4x MH121 - 0.7 ft

	H = H + 0.7 ft
	H = H
	H = H
	H = H - 0.7 ft

Z máx.	En servicio / In operation / En service / In Betrieb / In servizio / При работе	XR2H..... 95 kip XR3H..... 112 kip
	Fuera de servicio / Out of service / Hors service / Ausser Betrieb / Fuori servizio / В стационарном состоянии	XR2H..... 93 kip XR3H... 165 kip

GRÚA ARRIOSTRADA

Braced crane / Grue à entretoisement / Abgespannter Kran / Gru ancorata / Нарастиваемый кран

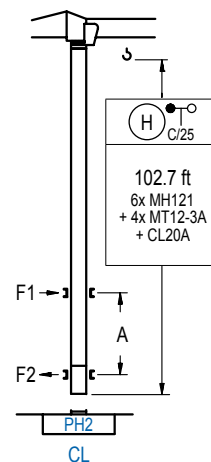


	XA2H	XA3H
A max	91.5	139.1
B max	- 59.1	- 59.1
C max	79.1 79.1	79.1 79.1
H max	170.3 229.3	218.2 277.2

	E2	E3
A max	87.3	134.5
B max	- 59.1	- 59.1
C max	79.1 79.1	79.1 79.1
H max	166.3 225.4	213.6 272.6

GRÚA TREPADORA

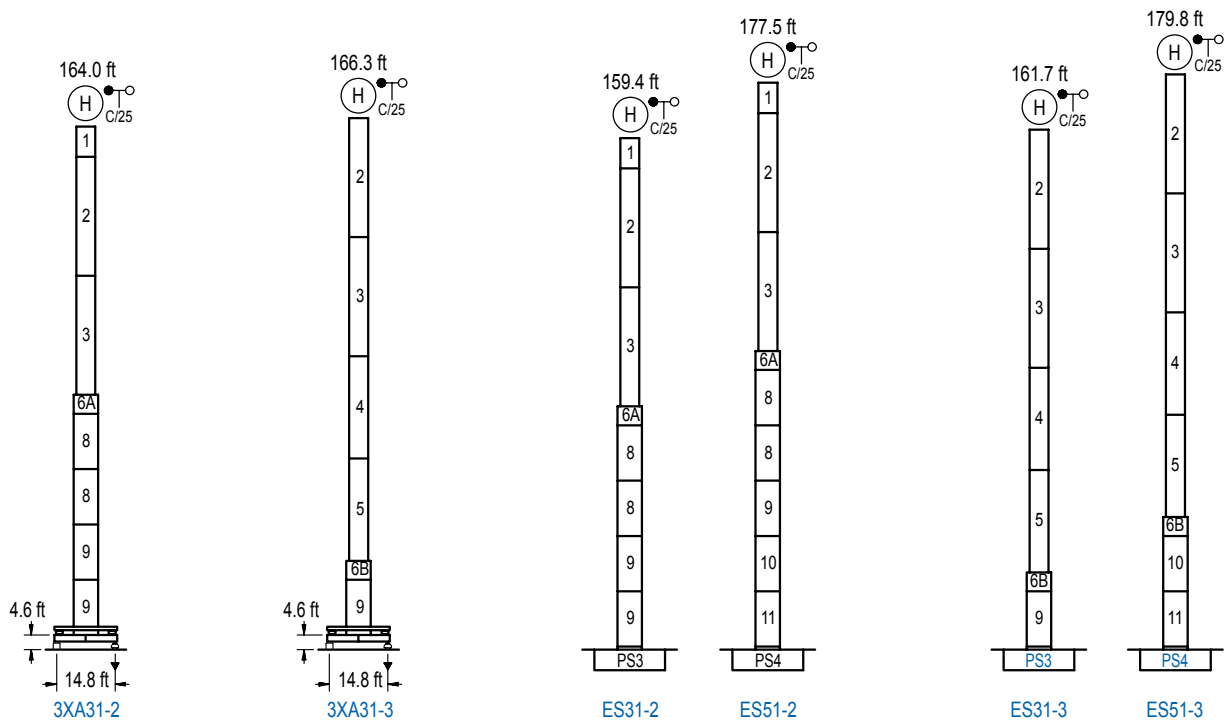
Internal climbing crane / Grue avec cage de télescopage intérieure / Kran mit klettern im Gebäude / Gru in rampante in cavedio / Кран с самоподъемом



n°	Ref.	∅	h
1	MH121	3.9	9.8
19	MT12-3A	3.9	9.5
20	CL20A	3.9	8.5

Otras zonas de viento, alturas superiores, arriostramientos o trepado interno consultar / Other wind zones, additional hook heights, tie frames or internal climbing on request / Autres zones de vent, des hauteurs supplémentaires, entretoisements ou grues avec cage de télescopage intérieure, sur demande / Andere Windzonen, weitere Hakenhöhen, Abspannungen zum Gebäude oder Klettern im Gebäude auf Anfrage / Per zone con velocità del vento particolari, altezze superiori, ancoraggi o rampante in cavedio, consultare il fabbricante / При других ветренных зонах, при большой высоте, привязках к зданию или наращивании крана внутри здания проконсультируйтесь с нами

LC 1100



n°	Ref.	∅	h	n°	Ref.	∅	h	n°	Ref.	∅	h
1	MH121	3.9	9.8	6A	TMS13/PMH12	5.2	3.3	8	S12	5.2	18.0
2	MH124-1	3.9	38.7	6B	TMS13/PMH13	5.2	3.3	9	S13	5.2	18.0
3	MH124A	3.9	38.7					10	TS14	5.2	18.0
4	MT123A	3.9	33.1					11	S14	5.2	18.0
5	MT123	3.9	33.1					12	TS15	5.2	18.0
								13	S15	5.2	18.0
MH124-1 = 4x MH121 - 0.7 ft											

Otras zonas de viento o alturas superiores consultar / Other wind zones or additional hook heights on request / Autres zones de vent ou des hauteurs supplémentaires sur demande / Andere Windzonen oder weitere Hakenhöhen auf Anfrage / Per zone con velocità del vento particolari o altezze superiori consultare il fabbricante / При других ветренных зонах о при большой высоте проконсультируйтесь с нами