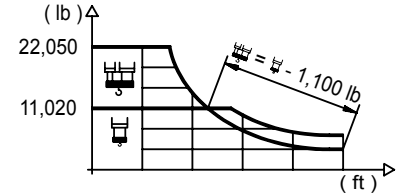


## DIAGRAMA DE CARGAS

Load chart / Diagramme de charges / Lastdiagramm / Diagramma di carico / Диаграмма распределения нагрузки

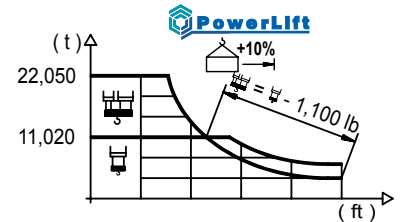
R (ft)	Icon 1										Icon 2											
213.3	47.2	65.6	72.2	78.7	84.0	90.6	98.4	105.0	114.8	124.7	131.2	137.8	147.6	154.2	164.0	170.6	180.4	187.0	196.9	203.4	213.3	ft
	22,050	14,950	13,290	11,950	11,020	11,020	10,030	9,300	8,400	7,630	7,190	6,790	6,260	5,930	5,510	5,250	4,890	4,700	4,390	4,210	3,970	lb
196.9	50.9	65.6	72.2	78.7	85.3	90.2	97.8	105.0	114.8	124.7	131.2	137.8	147.6	154.2	164.0	170.6	180.4	187.0	196.9			ft
	22,050	16,290	14,530	13,070	11,840	11,020	11,020	10,190	9,190	8,360	7,870	7,450	6,860	6,530	6,060	5,780	5,400	5,160	4,850			lb
180.4	54.8	65.6	72.2	78.7	85.3	91.9	97.4	106.0	114.8	124.7	131.2	137.8	147.6	154.2	164.0	170.6	180.4					ft
	22,050	17,790	15,900	14,310	12,990	11,860	11,020	11,020	10,080	9,170	8,640	8,180	7,540	7,160	6,660	6,370	5,950					lb
164.0	60.0	72.2	78.7	85.3	91.9	98.4	107.0	117.1	124.7	131.2	137.8	147.6	154.2	164.0								ft
	22,050	17,750	16,010	14,550	13,290	12,240	11,020	11,020	10,270	9,680	9,170	8,470	8,050	7,500								lb
147.6	62.0	72.2	78.7	85.3	91.9	98.4	110.6	121.4	124.7	131.2	137.8	147.6										ft
	22,050	18,410	16,620	15,100	13,820	12,720	11,020	11,020	10,690	10,080	9,550	8,820										lb
131.2	64.3	72.2	78.7	85.3	91.9	98.4	105.0	114.8	126.6	131.2												ft
	22,050	19,270	17,390	15,830	14,480	13,340	12,320	11,020	11,020	10,580												lb
114.8	64.3	72.2	78.7	85.3	91.9	98.4	105.0	113.2														ft
	22,050	19,270	17,420	15,830	14,510	13,340	12,320	11,240														lb
98.4	66.3	72.2	78.7	85.3	91.9	96.8																ft
	22,050	19,950	18,010	16,400	15,010	14,110																lb



## DIAGRAMA DE CARGAS POWERLIFT

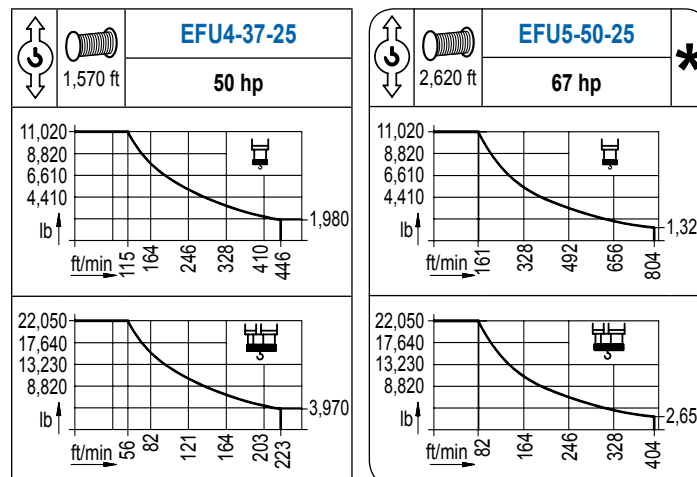
Load chart PowerLift / Diagramme de charges PowerLift / Lastdiagramm PowerLift / Diagramma di carico PowerLift / Диаграмма распределения нагрузки PowerLift

R (ft)	Icon 1										Icon 2											
213.3	49.9	65.6	72.2	78.7	85.3	88.3	97.4	105.0	114.8	121.4	131.2	137.8	147.6	154.2	164.0	170.6	180.4	187.0	196.9	203.4	213.3	ft
	22,050	15,900	14,150	12,740	11,530	11,020	11,020	10,140	9,150	8,580	7,850	7,410	6,830	6,480	6,020	5,750	5,380	5,140	4,830	4,630	4,370	lb
196.9	55.8	65.6	72.2	78.7	85.3	91.9	99.1	105.6	114.8	121.4	131.2	137.8	147.6	154.2	164.0	170.6	180.4	187.0	196.9			ft
	22,050	18,190	16,230	14,640	13,270	12,130	11,020	11,020	10,030	9,410	8,620	8,130	7,520	7,140	6,640	6,350	5,930	5,690	5,340			lb
180.4	58.1	65.6	72.2	78.7	85.3	91.9	98.4	103.7	114.8	121.4	131.2	137.8	147.6	154.2	164.0	170.6	180.4					ft
	22,050	19,160	17,110	15,430	14,020	12,810	11,770	11,020	11,020	10,340	9,480	8,950	8,270	7,870	7,320	6,990	6,550					lb
164.0	64.3	72.2	78.7	85.3	91.9	98.4	105.0	114.5	127.0	131.2	137.8	147.6	154.2	164.0								ft
	22,050	19,220	17,350	15,780	14,440	13,290	12,300	11,020	11,020	10,630	10,050	9,300	8,860	8,250								lb
147.6	66.3	72.2	78.7	85.3	91.9	98.4	105.0	114.8	118.8	131.9	137.8	147.6										ft
	22,050	20,020	18,080	16,450	15,060	13,870	12,830	11,510	11,020	11,020	10,490	9,700										lb
131.2	69.2	72.2	78.7	85.3	91.9	98.4	105.0	114.8	124.0	131.2												ft
	22,050	20,990	18,980	17,280	15,830	14,590	13,490	12,100	11,020	11,020												lb
114.8	69.6	72.2	78.7	85.3	91.9	98.4	105.0	113.2														ft
	22,050	21,080	19,050	17,330	15,900	14,640	13,540	12,370														lb
98.4	71.5	72.2	78.7	85.3	91.9	96.8																ft
	22,050	21,870	19,780	18,010	16,510	15,520																lb



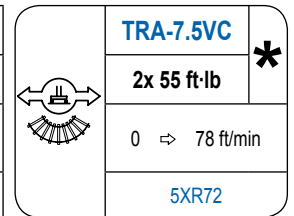
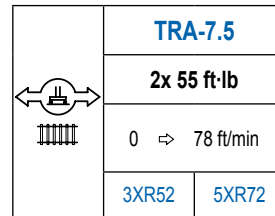
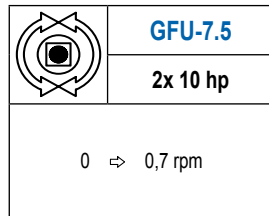
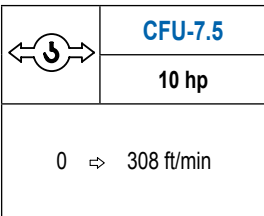
## MECANISMOS

Mechanisms / Mécanismes / Antriebe / Meccanismi / Механизмы



## MECANISMOS

Mechanisms / Mécanismes / Antriebe / Meccanismi / Механизмы



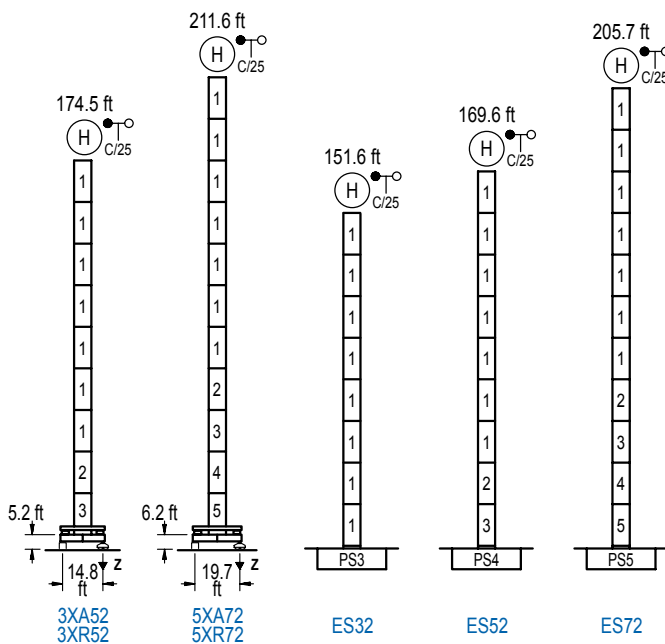
POTENCIA / POWER / PUISSANCE / LEISTUNG / POTENZA / МОЩНОСТЬ				Tensión de alimentación / Operating voltage / Tension de service / Betriebsspannung / Tensione di alimentazione / Напряжение источника питания	Generador / Generator / Générateur / Generator / Generatore / Генератор
Elevación / Hoist / Levage / Hub / Sollevamento / Тип механизма (подъем)	Carro / Trolley / Chariot / Laufkatze / Carrello / Грузовая тележка	Giro / Slewing / Rotation / Drehbewegung / Rotazione / Поворот	Traslación / Travel / Translation / Verfahrbewegung / Traslazione / Ход		
EFU4-37-25	CFU-7.5	(2x) GFU-7.5	(2x) TRA-7.5	480 V 3ph 60 Hz	115 kVA
EFU5-50-25					150 kVA

Opcional / Optional / En option / Kaufoption / Opzionale / Опционально  
\*

## ALTURAS BAJO GANCHO

Heights under hook / Hauteurs sous crochet / Hakenhöhen / Altezza sotto gancio / Высота под крюком

∅ 6.6 ft

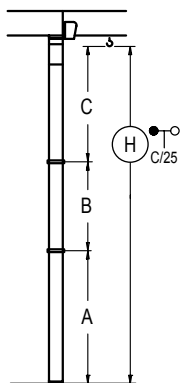


n°	Ref.	∅	h
1	S23	6.6	18.0
2	TS24	6.6	18.0
3	S24	6.6	18.0
4	TS25	6.6	18.0
5	S25	6.6	18.0

Z máx.	En servicio / In operation / En service / In Betrieb / In servizio / При работе	3XR52.. 194 kip 5XR72.. 194 kip
	Fuera de servicio / Out of service / Hors service / Ausser Betrieb / Fuori servizio / В стационарном состоянии	3XR52.. 220 kip 5XR72.. 293 kip

## GRÚA ARRIOSTRADA

Braced crane / Grue à entretoisement / Abgespannter Kran / Gru ancorata / Нарастиваемый кран

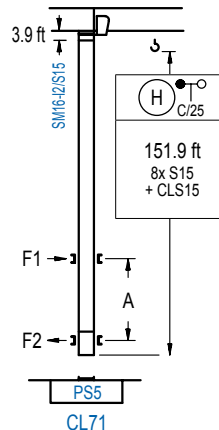


	3XA52	5XA72
A max	131.6	168.6
B max	- 72.2	- 72.2
C max	115.1 115.1	115.1 115.1
H max	246.7 318.9	283.8 356.0

	ES32	ES52	ES72
A max	108.6	126.6	162.7
B max	- 72.2	- 72.2	- 72.2
C max	115.1 115.1	115.1 115.1	115.1 115.1
H max	223.8 295.9	241.8 314.0	277.9 350.1

## GRÚA TREPADORA

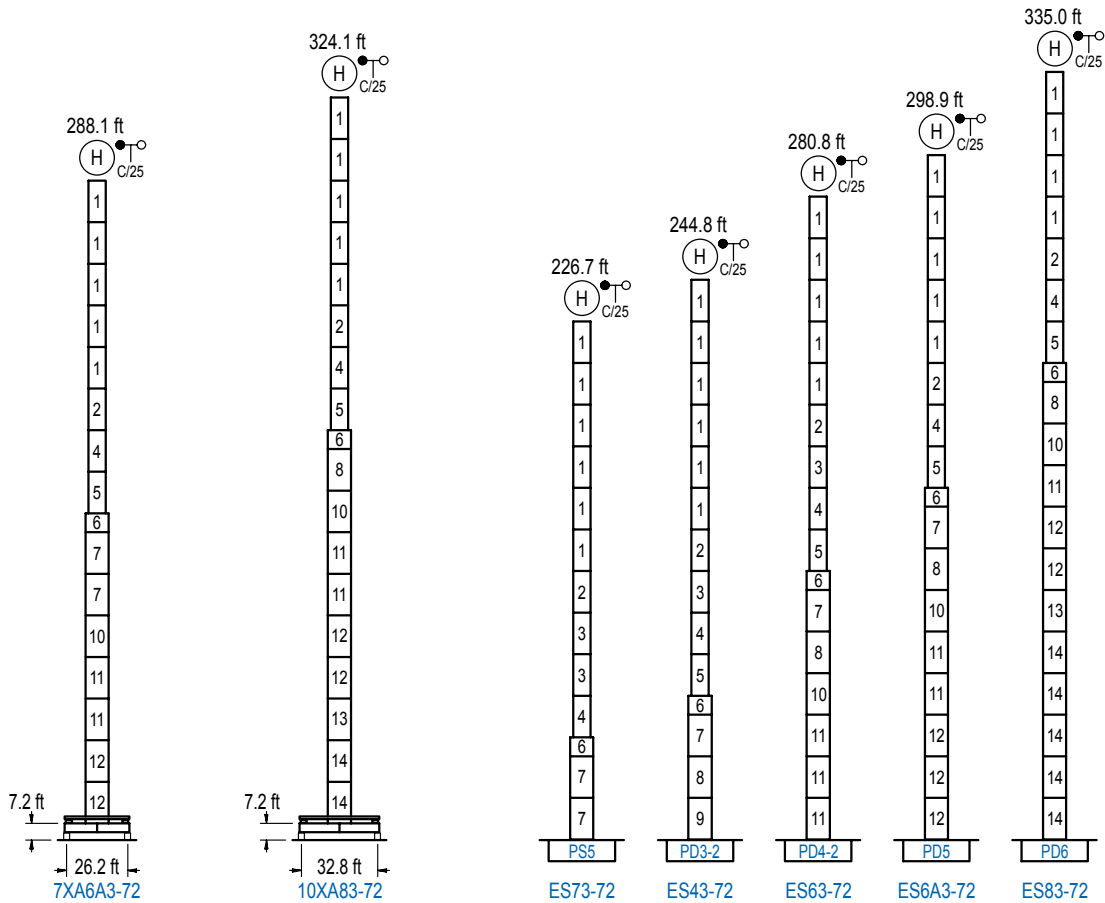
Internal climbing crane / Grue avec cage de télescopage intérieure / Kran mit klettern im Gebäude / Gru in rampante in cavedio / Кран с самоподъемом



n°	Ref.	∅	h
14	S15	5.2	18.0
15	CLS15	5.2	10.2

Otras zonas de viento, alturas superiores, arriostramientos o trepado interno consultar / Other wind zones, additional hook heights, tie frames or internal climbing on request / Autres zones de vent, des hauteurs supplémentaires, entretoisements ou grues avec cage de télescopage intérieure, sur demande / Andere Windzonen, weitere Hakenhöhen, Abspannungen zum Gebäude oder Klettern im Gebäude auf Anfrage / Per zone con velocità del vento particolari, altezze superiori, ancoraggi o rampante in cavedio, consultare il fabbricante / При других ветренных зонах, при большой высоте, привязках к зданию или наращивании крана внутри здания проконсультируйтесь с нами

LC 1600



n°	Ref.	Ø	h	n°	Ref.	Ø	h	n°	Ref.	Ø	h	n°	Ref.	Ø	h
1	S23	6.6	18.0	4	TS25	6.6	18.0	7	S35	8.2	18.0	11	D34	8.2	18.0
2	TS24	6.6	18.0	5	S25	6.6	18.0	8	TD33A	8.2	18.0	12	D35	8.2	18.0
3	S24	6.6	18.0	6	TMS35S25	8.2	3.3	9	D33	8.2	18.0	13	TD36B	8.2	18.0
								10	TD34	8.2	18.0	14	D36	8.2	18.0

Otras zonas de viento o alturas superiores consultar / Other wind zones or additional hook heights on request / Autres zones de vent ou des hauteurs supplémentaires sur demande / Andere Windzonen oder weitere Hakenhöhen auf Anfrage / Per zone con velocità del vento particolari o altezze superiori consultare il fabbricante / При других ветренных зонах о при большой высоте проконсультируйтесь с нами



Construcciones Metálicas COMANSA S. A.  
 Tel.: (34) 948 335 020 / Fax: (34) 948 330 810 / e-mail: info@comansa.com  
 Polígono Urbizkain E-31620 HUARTE-PAMPLONA.- SPAIN

DS.1308.02.IA 01/14 **16LC185/22,050 lb**