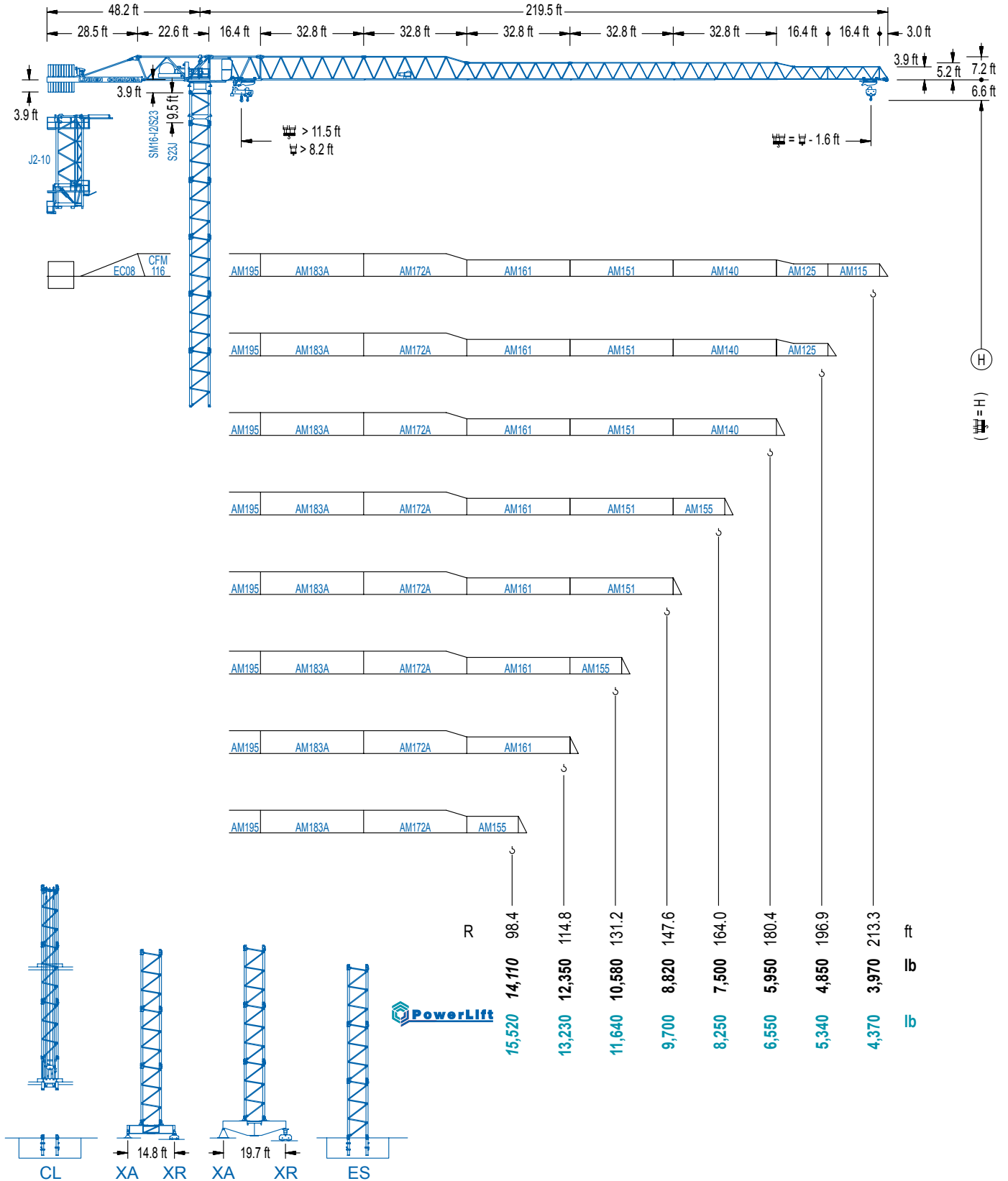


LC 1600

16 LC 185

26,460 lb

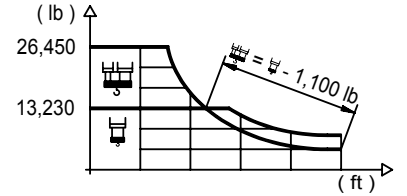


LC 1600

## DIAGRAMA DE CARGAS

Load chart / Diagramme de charges / Lastdiagramm / Diagramma di carico / Диаграмма распределения нагрузки

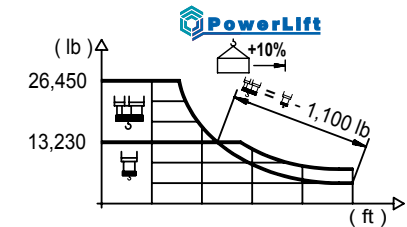
R (ft)																								
213.3	40.7	52.5	59.1	65.6	72.5	77.1	85.3	91.9	98.4	105.0	114.8	121.4	131.2	137.8	147.6	154.2	164.0	170.6	180.4	187.0	196.9	203.4	213.3	ft
	26,460	19,510	16,950	14,950	13,230	13,230	11,790	10,850	10,030	9,300	8,400	7,870	7,190	6,790	6,260	5,930	5,510	5,250	4,890	4,700	4,390	4,210	3,970	lb
196.9	43.6	52.5	59.1	65.6	72.2	78.1	83.3	91.9	98.4	105.0	114.8	121.4	131.2	137.8	147.6	154.2	164.0	170.6	180.4	187.0	196.9	ft		
	26,460	21,210	18,450	16,290	14,530	13,230	11,840	10,960	10,190	9,190	8,620	7,870	7,450	6,860	6,530	6,060	5,780	5,400	5,160	4,850	4,850	lb		
180.4	46.9	52.5	59.1	65.6	72.2	78.7	84.0	90.2	98.4	105.0	114.8	121.4	131.2	137.8	147.6	154.2	164.0	170.6	180.4	ft				
	26,460	23,130	20,150	17,790	15,900	14,310	13,230	13,230	11,990	11,160	10,080	9,460	8,640	8,180	7,540	7,160	6,660	6,370	5,950	5,950	lb			
164.0	51.2	59.1	65.6	72.2	78.7	85.3	92.2	99.4	105.0	114.8	121.4	131.2	137.8	147.6	154.2	164.0	ft							
	26,460	22,440	19,840	17,750	16,010	14,550	13,230	13,230	12,460	11,270	10,580	9,680	9,170	8,470	8,050	7,500	7,500	lb						
147.6	52.8	59.1	65.6	72.2	78.7	85.3	91.9	95.1	103.0	114.8	121.4	131.2	137.8	147.6	ft									
	26,460	23,260	20,590	18,410	16,620	15,100	13,820	13,230	13,230	11,730	11,000	10,080	9,550	8,820	8,820	lb								
131.2	54.8	59.1	65.6	72.2	78.7	85.3	91.9	99.1	107.6	114.8	121.4	131.2	ft											
	26,460	24,320	21,520	19,270	17,390	15,830	14,480	13,230	13,230	12,300	11,550	10,580	10,580	lb										
114.8	54.8	59.1	65.6	72.2	78.7	85.3	91.9	99.1	107.9	114.8	ft													
	26,460	24,320	21,540	19,270	17,420	15,830	14,510	13,230	13,230	12,350	12,350	lb												
98.4	56.4	65.6	72.2	78.7	85.3	91.9	96.8	ft																
	26,460	22,270	19,950	18,010	16,400	15,010	14,110	14,110	lb															



## DIAGRAMA DE CARGAS POWERLIFT

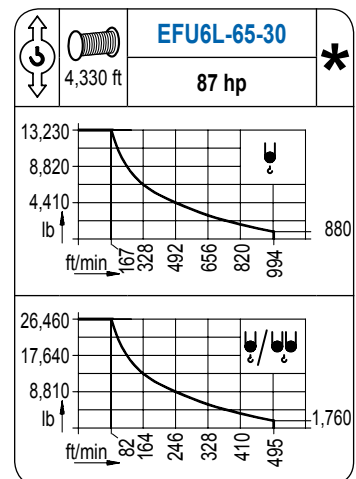
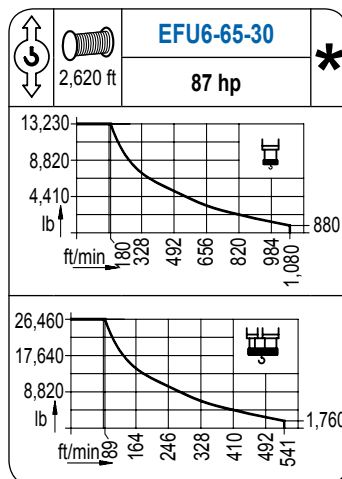
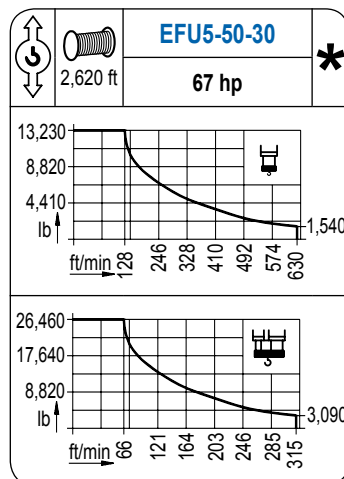
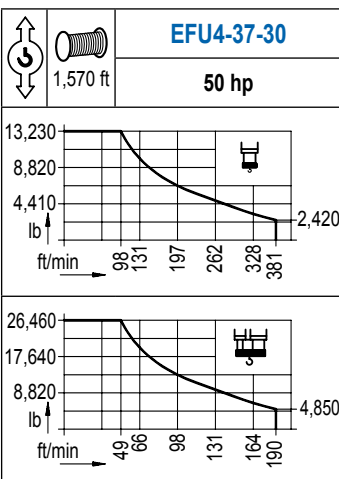
Load chart PowerLift / Diagramme de charges PowerLift / Lastdiagramm PowerLift / Diagramma di carico PowerLift / Диаграмма распределения нагрузки PowerLift

R (ft)																								
213.3	42.7	52.5	59.1	65.6	72.2	76.1	83.0	91.9	98.4	105.0	114.8	121.4	131.2	137.8	147.6	154.2	164.0	170.6	180.4	187.0	196.9	203.4	213.3	ft
	26,460	20,720	18,010	15,900	14,150	13,230	13,230	11,770	10,890	10,140	9,150	8,580	7,850	7,410	6,830	6,480	6,020	5,750	5,380	5,140	4,830	4,630	4,370	lb
196.9	47.6	52.5	59.1	65.6	72.2	78.7	85.6	89.9	98.4	105.0	114.8	121.4	131.2	137.8	147.6	154.2	164.0	170.6	180.4	187.0	196.9	ft		
	26,460	23,610	20,570	18,190	16,230	14,640	13,230	13,230	11,950	11,110	10,030	9,410	8,620	8,130	7,520	7,140	6,640	6,350	5,930	5,690	5,340	5,340	lb	
180.4	49.9	59.1	65.6	72.2	78.7	85.3	89.6	97.4	105.0	114.8	121.4	131.2	137.8	147.6	154.2	164.0	170.6	180.4	ft					
	26,460	21,670	19,160	17,110	15,430	14,020	13,230	13,230	12,170	11,020	10,340	9,480	8,950	8,270	7,870	7,320	6,990	6,550	6,550	lb				
164.0	54.8	59.1	65.6	72.2	78.7	85.3	91.9	98.8	107.9	114.8	121.4	131.2	137.8	147.6	154.2	164.0	ft							
	26,460	24,250	21,470	19,220	17,350	15,780	14,440	13,230	13,230	12,350	11,600	10,630	10,050	9,300	8,860	8,250	8,250	lb						
147.6	56.8	65.6	72.2	78.7	85.3	91.9	102.4	111.9	114.8	121.4	131.2	137.8	147.6	ft										
	26,460	22,350	20,020	18,080	16,450	15,060	13,230	13,230	12,850	12,080	11,070	10,490	9,700	9,700	lb									
131.2	59.1	65.6	72.2	78.7	85.3	91.9	98.4	106.6	117.1	121.4	131.2	ft												
	26,460	23,430	20,990	18,980	17,280	15,830	14,590	13,230	13,230	12,700	11,640	11,640	lb											
114.8	59.1	65.6	72.2	78.7	85.3	91.9	98.4	107.0	114.8	ft														
	26,460	23,520	21,080	19,050	17,330	15,900	14,640	13,230	13,230	13,230	13,230	13,230	lb											
98.4	61.0	65.6	72.2	78.7	85.3	91.9	96.8	ft																
	26,460	24,380	21,870	19,780	18,010	16,510	15,520	15,520	lb															



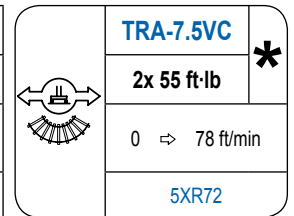
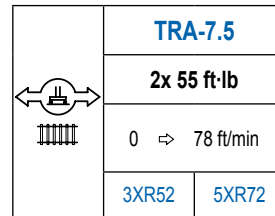
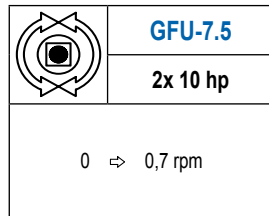
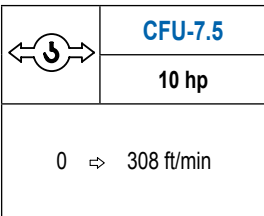
## MECANISMOS

Mechanisms / Mécanismes / Antriebe / Meccanismi / Механизмы



## MECANISMOS

Mechanisms / Mécanismes / Antriebe / Meccanismi / Механизмы



POTENCIA / POWER / PUISSANCE / LEISTUNG / POTENZA / МОЩНОСТЬ				Tensión de alimentación / Operating voltage / Tension de service / Betriebsspannung / Tensione di alimentazione / Напряжение источника питания	Generador / Generator / Générateur / Generator / Generatore / Генератор
Elevación / Hoist / Levage / Hub / Sollevamento / Тип механизма (подъем)	Carro / Trolley / Chariot / Laufkatze / Carrello / Грузовая тележка	Giro / Slewing / Rotation / Drehbewegung / Rotazione / Поворот	Traslación / Travel / Translation / Verfahrbewegung / Traslazione / Ход		
EFU4-37-30	CFU-7.5	(2x) GFU-7.5	(2x) TRA-7.5	480 V 3ph 60 Hz	115 kVA
EFU5-50-30					150 kVA
EFU6-65-30					170 kVA
EFU6L-65-30					170 kVA

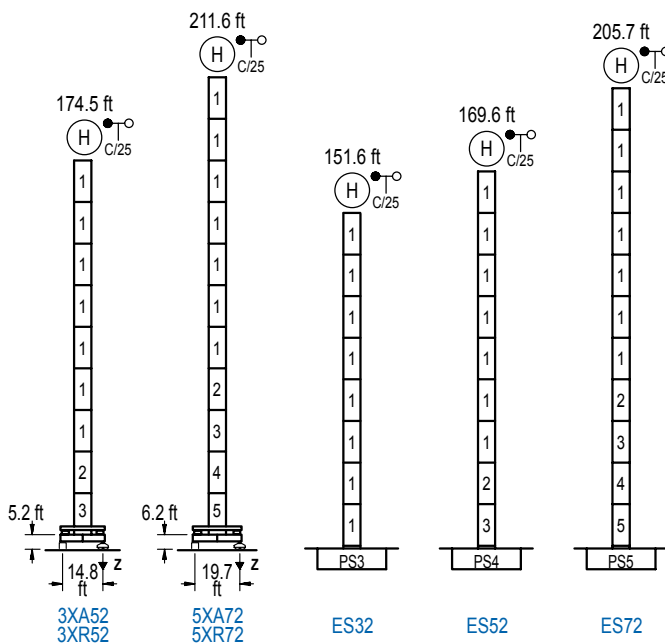
Optional / Optional / En option / Kaufoption / Opzionale / Опционально

\*

## ALTURAS BAJO GANCHO

Heights under hook / Hauteurs sous crochet / Hakenhöhen / Altezza sotto gancio / Высота под крюком

∅ 6.6 ft

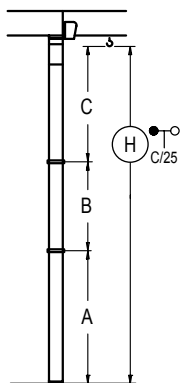


n°	Ref.	∅	h
1	S23	6.6	18.0
2	TS24	6.6	18.0
3	S24	6.6	18.0
4	TS25	6.6	18.0
5	S25	6.6	18.0

Z máx.	En servicio / In operation / En service / In Betrieb / In servizio / При работе	3XR52.. 194 kip 5XR72.. 194 kip
	Fuera de servicio / Out of service / Hors service / Ausser Betrieb / Fuori servizio / В стационарном состоянии	3XR52.. 220 kip 5XR72.. 293 kip

## GRÚA ARRIOSTRADA

Braced crane / Grue à entretoisement / Abgespannter Kran / Gru ancorata / Нарастиваемый кран

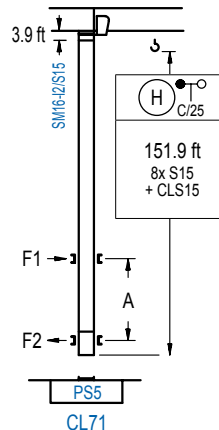


	3XA52	5XA72
A max	131.6	168.6
B max	- 72.2	- 72.2
C max	115.1 115.1	115.1 115.1
H max	246.7 318.9	283.8 356.0

	ES32	ES52	ES72
A max	108.6	126.6	162.7
B max	- 72.2	- 72.2	- 72.2
C max	115.1 115.1	115.1 115.1	115.1 115.1
H max	223.8 295.9	241.8 314.0	277.9 350.1

## GRÚA TREPADORA

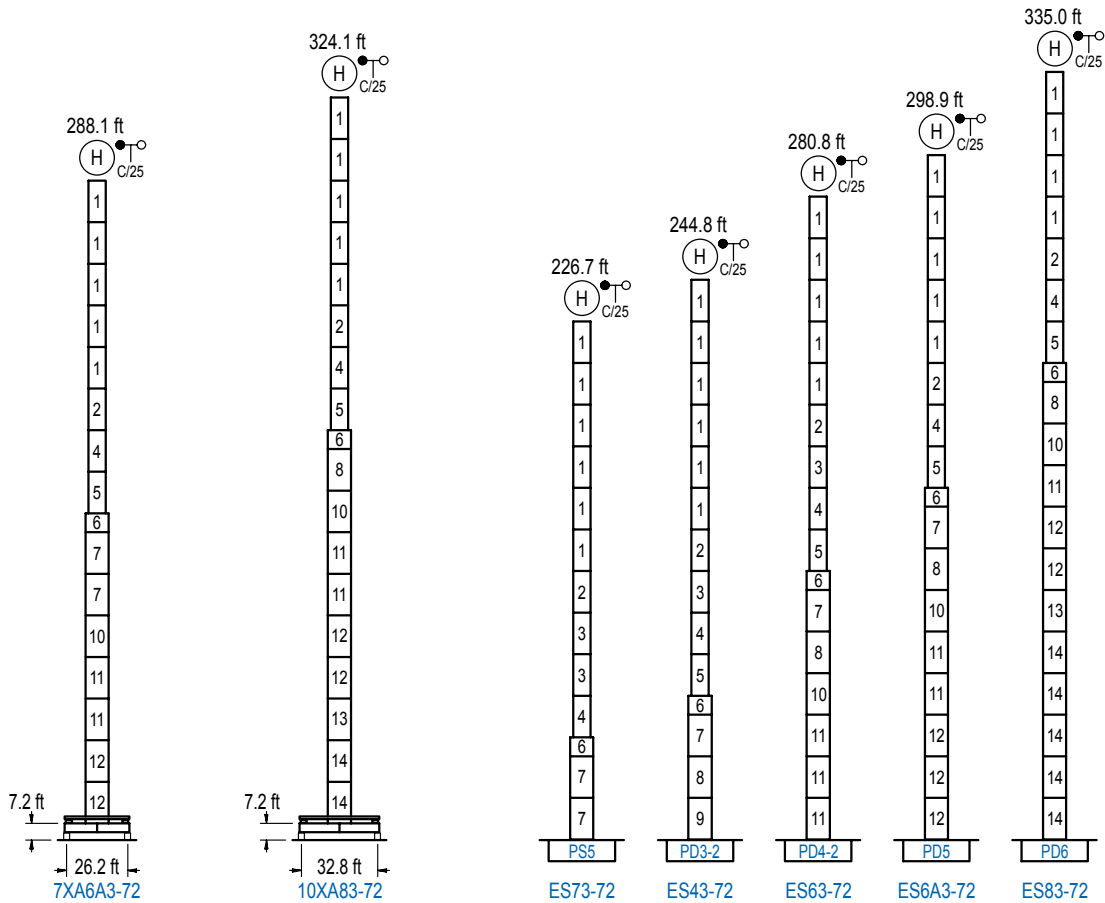
Internal climbing crane / Grue avec cage de télescopage intérieure / Kran mit klettern im Gebäude / Gru in rampante in cavedio / Кран с самоподъемом



n°	Ref.	∅	h
14	S15	5.2	18.0
15	CLS15	5.2	10.2

Otras zonas de viento, alturas superiores, arriostramientos o trepado interno consultar / Other wind zones, additional hook heights, tie frames or internal climbing on request / Autres zones de vent, des hauteurs supplémentaires, entretoisements ou grues avec cage de télescopage intérieure, sur demande / Andere Windzonen, weitere Hakenhöhen, Abspannungen zum Gebäude oder Klettern im Gebäude auf Anfrage / Per zone con velocità del vento particolari, altezze superiori, ancoraggi o rampante in cavedio, consultare il fabbricante / При других ветренных зонах, при большой высоте, привязках к зданию или наращивании крана внутри здания проконсультируйтесь с нами

LC 1600



n°	Ref.	Ø	h	n°	Ref.	Ø	h	n°	Ref.	Ø	h	n°	Ref.	Ø	h
1	S23	6.6	18.0	4	TS25	6.6	18.0	7	S35	8.2	18.0	11	D34	8.2	18.0
2	TS24	6.6	18.0	5	S25	6.6	18.0	8	TD33A	8.2	18.0	12	D35	8.2	18.0
3	S24	6.6	18.0	6	TMS35S25	8.2	3.3	9	D33	8.2	18.0	13	TD36B	8.2	18.0
								10	TD34	8.2	18.0	14	D36	8.2	18.0

Otras zonas de viento o alturas superiores consultar / Other wind zones or additional hook heights on request / Autres zones de vent ou des hauteurs supplémentaires sur demande / Andere Windzonen oder weitere Hakenhöhen auf Anfrage / Per zone con velocità del vento particolari o altezze superiori consultare il fabbricante / При других ветренных зонах о при большой высоте проконсультируйтесь с нами



Construcciones Metálicas COMANSA S. A.  
 Tel.: (34) 948 335 020 / Fax: (34) 948 330 810 / e-mail: info@comansa.com  
 Polígono Urbizkain E-31620 HUARTE-PAMPLONA.- SPAIN

DS.1308.03.IA 01/14 **16LC185/26,460 lb**