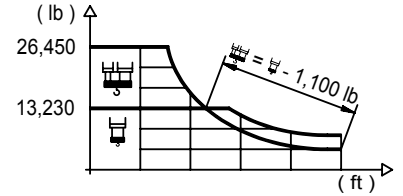


LC 1600

## DIAGRAMA DE CARGAS

Load chart / Diagramme de charges / Lastdiagramm / Diagramma di carico / Диаграмма распределения нагрузки

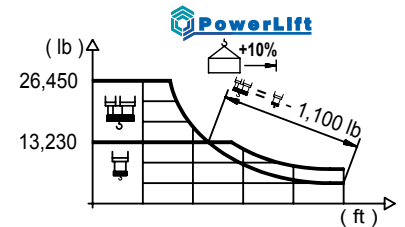
R (ft)	Icon 1										Icon 2																																			
213.3	46.3	59.1	65.6	72.2	83.0	88.3	91.9	98.4	105.0	114.8	121.4	131.2	137.8	147.6	154.2	164.0	170.6	180.4	187.0	196.9	203.4	213.3	ft	26,460	19,820	17,500	15,630	13,230	13,230	12,680	11,730	10,910	9,850	9,240	8,470	7,980	7,360	7,010	6,530	6,220	5,820	5,580	5,220	5,030	4,740	lb
196.9	51.2	59.1	65.6	72.2	78.7	85.3	91.5	98.1	105.0	114.8	121.4	131.2	137.8	147.6	154.2	164.0	170.6	180.4	187.0	196.9	ft	26,460	22,240	19,670	17,590	15,870	14,420	13,230	13,230	12,280	11,110	10,430	9,550	9,040	8,330	7,940	7,390	7,050	6,590	6,330	5,950	lb				
180.4	56.1	59.1	65.6	72.2	78.7	85.3	91.9	101.4	109.3	114.8	121.4	131.2	137.8	147.6	154.2	164.0	170.6	180.4	ft	26,460	24,980	22,130	19,800	17,900	16,270	14,900	13,230	13,230	12,520	11,770	10,780	10,210	9,440	8,970	8,380	8,000	7,500	lb								
164.0	61.0	72.2	78.7	85.3	91.9	98.4	105.0	110.2	119.4	131.2	137.8	147.6	154.2	164.0	ft	26,460	21,800	19,710	17,970	16,470	15,170	14,040	13,230	13,230	11,900	11,270	10,430	9,920	9,260	lb																
147.6	62.7	72.2	78.7	85.3	91.9	98.4	105.0	113.5	123.0	131.2	137.8	147.6	ft	26,460	22,510	20,370	18,560	17,020	15,700	14,530	13,230	13,230	12,320	11,660	10,800	lb																				
131.2	64.0	72.2	78.7	85.3	91.9	98.4	105.0	115.2	125.3	131.2	ft	26,460	22,880	20,700	18,870	17,310	15,960	14,790	13,230	13,230	12,570	lb																								
114.8	65.0	72.2	78.7	85.3	91.9	98.4	105.0	113.2	ft	26,460	23,480	21,250	19,380	17,770	16,400	15,190	13,890	lb																												
98.4	63.6	72.2	78.7	85.3	91.9	96.8	ft	26,460	22,930	20,750	18,920	17,350	16,310	lb																																



## DIAGRAMA DE CARGAS POWERLIFT

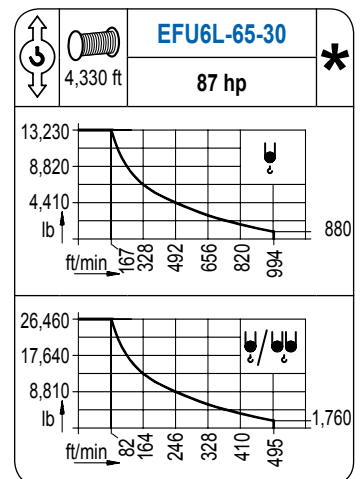
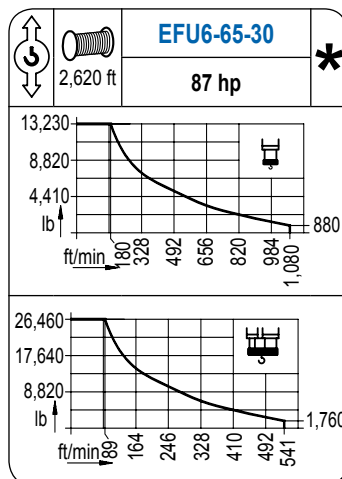
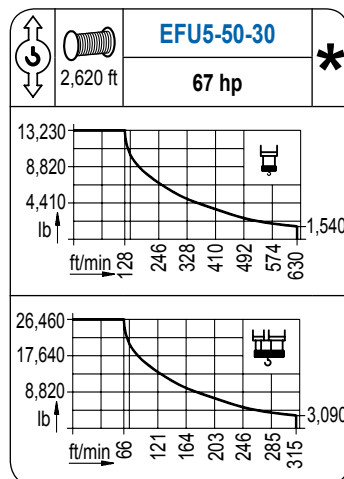
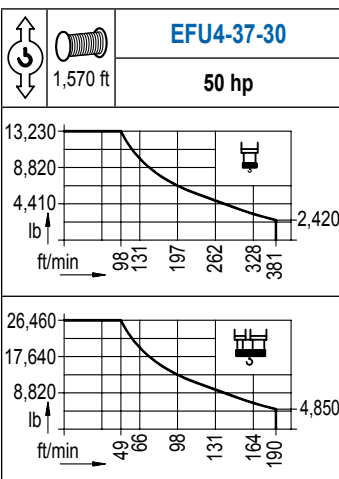
Load chart PowerLift / Diagramme de charges PowerLift / Lastdiagramm PowerLift / Diagramma di carico PowerLift / Диаграмма распределения нагрузки PowerLift

R (ft)	Icon 1										Icon 2																																			
213.3	48.6	59.1	65.6	72.2	78.7	85.3	87.6	95.1	105.0	114.8	121.4	131.2	137.8	147.6	154.2	164.0	170.6	180.4	187.0	196.9	203.4	213.3	ft	26,460	21,140	18,670	16,690	15,040	13,670	13,230	13,230	11,860	10,710	10,080	9,220	8,710	8,050	7,650	7,120	6,790	6,370	6,110	5,730	5,510	5,200	lb
196.9	54.1	59.1	65.6	72.2	78.7	85.3	91.9	97.4	106.3	114.8	121.4	131.2	137.8	147.6	154.2	164.0	170.6	180.4	187.0	196.9	ft	26,460	23,900	21,160	18,940	17,090	15,540	14,220	13,230	13,230	12,130	11,400	10,450	9,880	9,130	8,690	8,090	7,740	7,250	6,970	6,550	lb				
180.4	60.0	65.6	72.2	78.7	85.3	91.9	98.4	105.0	108.6	118.8	131.2	137.8	147.6	154.2	164.0	170.6	180.4	ft	26,460	23,920	21,430	19,380	17,640	16,180	14,900	13,800	13,230	13,230	11,820	11,200	10,360	9,850	9,190	8,800	8,250	lb										
164.0	65.6	72.2	78.7	85.3	91.9	98.4	105.0	114.8	118.8	129.9	137.8	147.6	154.2	164.0	ft	26,460	23,680	21,430	19,530	17,920	16,530	15,320	13,780	13,230	13,230	12,370	11,460	10,910	10,190	lb																
147.6	67.6	72.2	78.7	85.3	91.9	98.4	105.0	114.8	122.4	134.2	137.8	147.6	ft	26,460	24,520	22,200	20,240	18,580	17,150	15,900	14,290	13,230	13,230	12,830	11,880	lb																				
131.2	68.6	72.2	78.7	85.3	91.9	98.4	105.0	114.8	124.3	131.2	ft	26,460	25,000	22,620	20,640	18,940	17,480	16,200	14,570	13,230	13,230	12,330	lb																							
114.8	70.5	78.7	85.3	91.9	98.4	105.0	113.2	ft	26,460	23,280	21,230	19,490	17,990	16,690	15,280	lb																														
98.4	68.9	78.7	85.3	91.9	96.8	ft	26,460	22,770	20,770	19,070	17,950	lb																																		



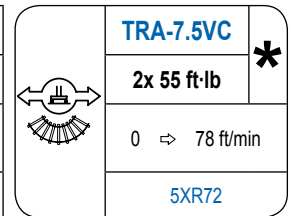
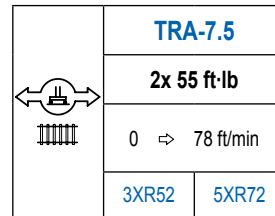
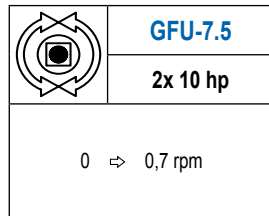
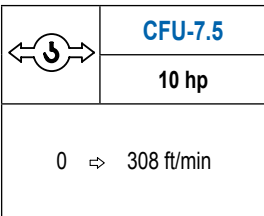
## MECANISMOS

Mechanisms / Mécanismes / Antriebe / Meccanismi / Механизмы



## MECANISMOS

Mechanisms / Mécanismes / Antriebe / Meccanismi / Механизмы



POTENCIA / POWER / PUISSANCE / LEISTUNG / POTENZA / МОЩНОСТЬ				Tensión de alimentación / Operating voltage / Tension de service / Betriebsspannung / Tensione di alimentazione / Напряжение источника питания	Generador / Generator / Générateur / Generator / Generatore / Генератор
Elevación / Hoist / Levage / Hub / Sollevamento / Тип механизма (подъем)	Carro / Trolley / Chariot / Laufkatze / Carrello / Грузовая тележка	Giro / Slewing / Rotation / Drehbewegung / Rotazione / Поворот	Traslación / Travel / Translation / Verfahrbewegung / Traslazione / Ход		
EFU4-37-30	CFU-7.5	(2x) GFU-7.5	(2x) TRA-7.5	480 V 3ph 60 Hz	115 kVA
EFU5-50-30					150 kVA
EFU6-65-30					170 kVA
EFU6L-65-30					170 kVA

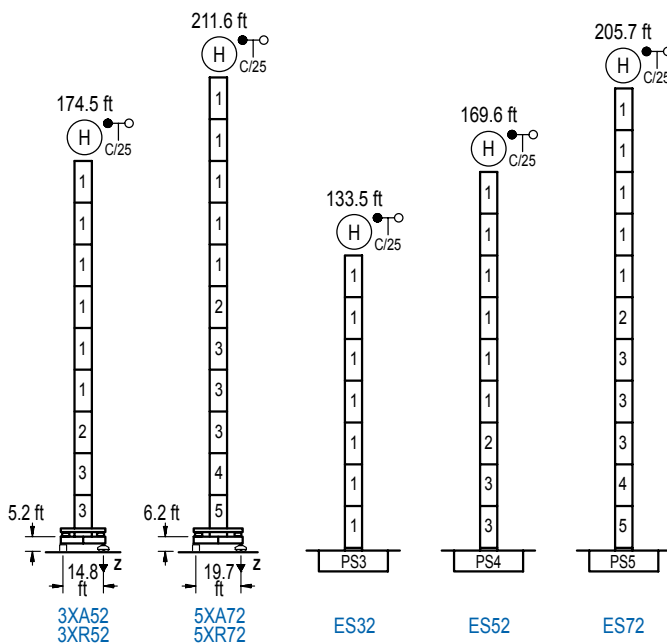
Opcional / Optional / En option / Kaufoption / Opzionale / Опционально

\*

## ALTURAS BAJO GANCHO

Heights under hook / Hauteurs sous crochet / Hakenhöhen / Altezza sotto gancio / Высота под крюком

∅ 6.6 ft

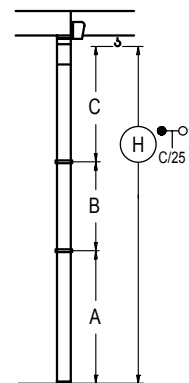


n°	Ref.	∅	h
1	S23	6.6	18.0
2	TS24	6.6	18.0
3	S24	6.6	18.0
4	TS25	6.6	18.0
5	S25	6.6	18.0

Z máx.	En servicio / In operation / En service / In Betrieb / In servizio / При работе	3XR52.. 209 kip 5XR72.. 192 kip
	Fuera de servicio / Out of service / Hors service / Ausser Betrieb / Fuori servizio / В стационарном состоянии	3XR52.. 220 kip 5XR72.. 298 kip

## GRÚA ARRIOSTRADA

Braced crane / Grue à entretoisement / Abgespannter Kran / Gru ancorata / Нарастиваемый кран

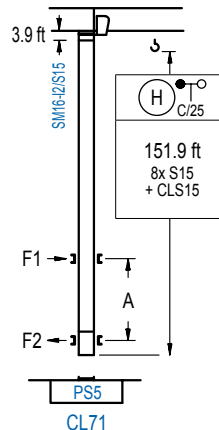


	3XA52	5XA72
A max	131.6	168.6
B max	- 72.2	- 72.2
C max	115.1 115.1	115.1 97.1
H max	246.7 318.9	283.8 337.9

	ES32	ES52	ES72
A max	90.6	126.6	162.7
B max	- 72.2	- 72.2	- 72.2
C max	115.1 115.1	115.1 115.1	115.1 97.1
H max	205.7 277.9	241.8 314.0	277.9 332.0

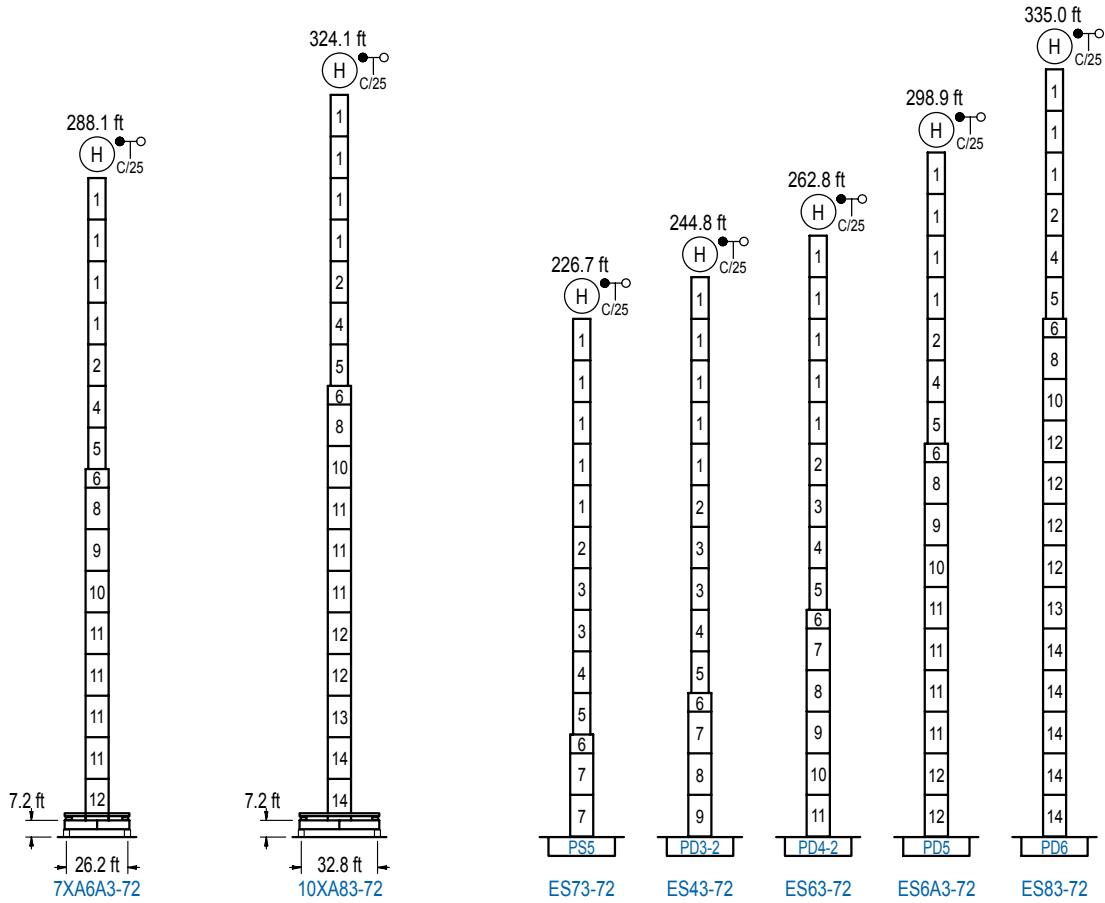
## GRÚA TREPADORA

Internal climbing crane / Grue avec cage de télescopage intérieure / Kran mit klettern im Gebäude / Gru in rampante in cavedio / Кран с самоподъемом



n°	Ref.	∅	h
14	S15	5.2	18.0
15	CLS15	5.2	10.2

Otras zonas de viento, alturas superiores, arriostramientos o trepado interno consultar / Other wind zones, additional hook heights, tie frames or internal climbing on request / Autres zones de vent, des hauteurs supplémentaires, entretoisements ou grues avec cage de télescopage intérieure, sur demande / Andere Windzonen, weitere Hakenhöhen, Abspannungen zum Gebäude oder Klettern im Gebäude auf Anfrage / Per zone con velocità del vento particolari, altezze superiori, ancoraggi o rampante in cavedio, consultare il fabbricante / При других ветренных зонах, при большой высоте, привязках к зданию или наращивании крана внутри здания проконсультируйтесь с нами



n°	Ref.	Ø	h	n°	Ref.	Ø	h	n°	Ref.	Ø	h	n°	Ref.	Ø	h
1	S23	6.6	18.0	4	TS25	6.6	18.0	7	S35	8.2	18.0	11	D34	8.2	18.0
2	TS24	6.6	18.0	5	S25	6.6	18.0	8	TD33A	8.2	18.0	12	D35	8.2	18.0
3	S24	6.6	18.0	6	TMS35S25	8.2	3.3	9	D33	8.2	18.0	13	TD36B	8.2	18.0
								10	TD34	8.2	18.0	14	D36	8.2	18.0

Otras zonas de viento o alturas superiores consultar / Other wind zones or additional hook heights on request / Autres zones de vent ou des hauteurs supplémentaires sur demande / Andere Windzonen oder weitere Hakenhöhen auf Anfrage / Per zone con velocità del vento particolari o altezze superiori consultare il fabbricante / При других ветренных зонах о при большой высоте проконсультируйтесь с нами



Construcciones Metálicas COMANSA S. A.

Tel.: (34) 948 335 020 / Fax: (34) 948 330 810 / e-mail: info@comansa.com  
Polígono Urbizkain E-31620 HUARTE-PAMPLONA.- SPAIN

DS.1308.05.IA 01/14 **16LC220/26,460 lb**