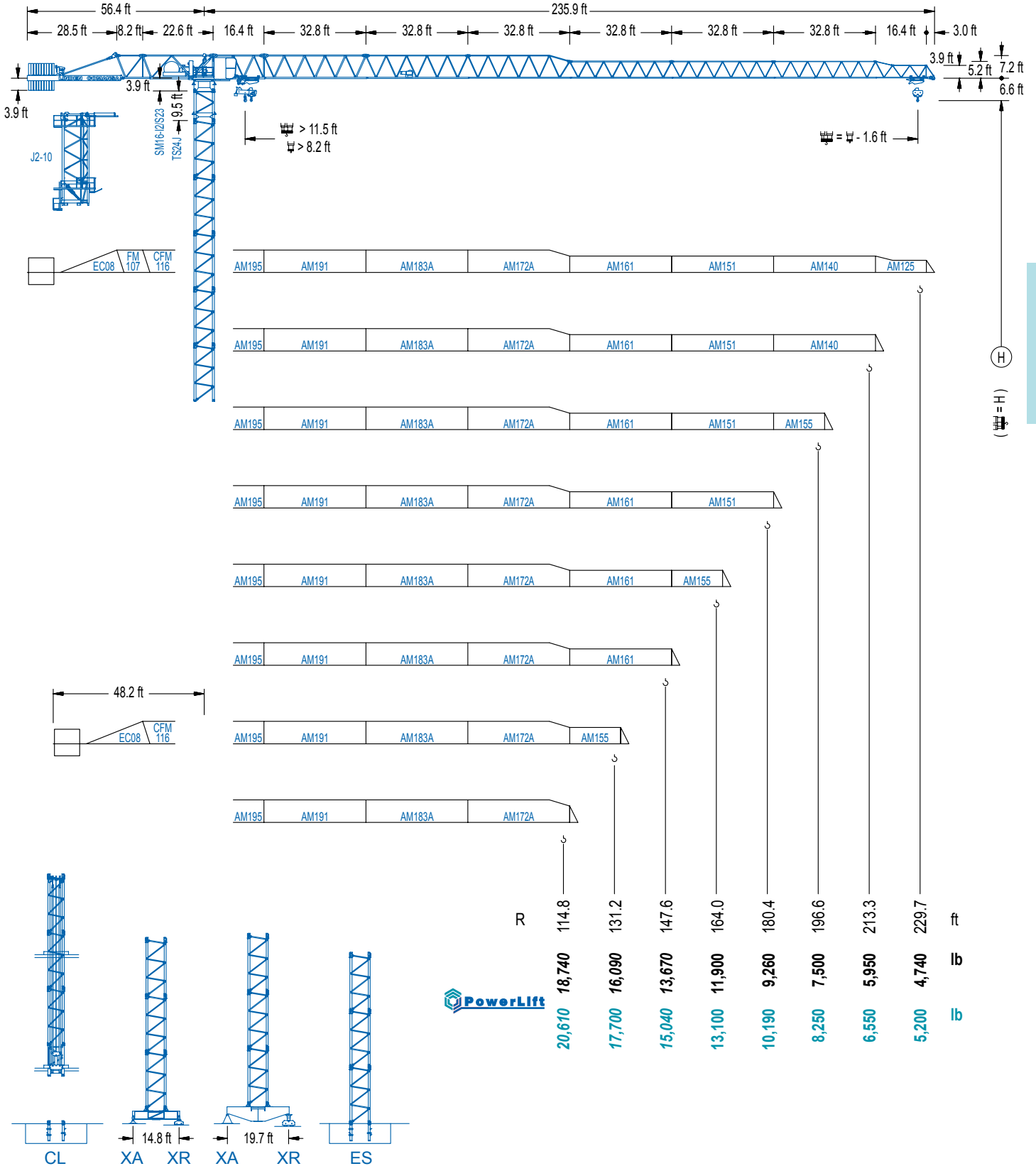


LC 1600

16 LC 260

26,460 lb

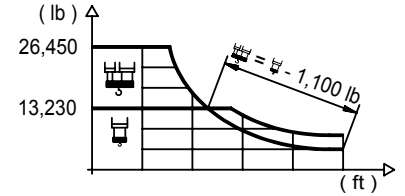


LC 1600

## DIAGRAMA DE CARGAS

Load chart / Diagramme de charges / Lastdiagramm / Diagramma di carico / Диаграмма распределения нагрузки

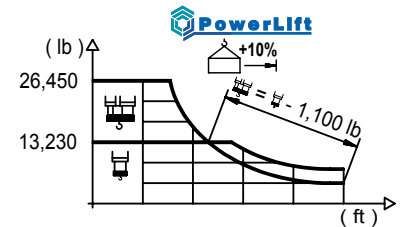
R (ft)	Icon 1										Icon 2																																			
229.7	49.5	65.6	72.2	85.3	89.2	95.1	105.0	114.8	121.4	131.2	137.8	147.6	154.2	164.0	170.6	180.4	187.0	196.9	203.4	213.3	219.8	229.7	ft	26,460	19,070	17,040	13,960	13,230	13,230	11,840	10,710	10,050	9,190	8,690	8,020	7,630	7,100	6,790	6,350	6,080	5,730	5,510	5,200	5,000	4,740	lb
213.3	54.8	65.6	72.2	85.3	91.9	99.1	106.3	114.8	121.4	131.2	137.8	147.6	154.2	164.0	170.6	180.4	187.0	196.9	203.4	213.3	ft	26,460	21,540	19,290	15,830	14,510	13,230	13,230	12,130	11,400	10,450	9,880	9,130	8,690	8,090	7,740	7,250	6,940	6,550	6,310	5,950	lb				
196.9	61.0	65.6	72.2	85.3	91.9	98.4	110.6	119.1	121.4	131.2	137.8	147.6	154.2	164.0	170.6	180.4	187.0	196.9	ft	26,460	24,400	21,870	18,010	16,510	15,210	13,230	13,230	12,960	11,880	11,240	10,410	9,920	9,240	8,840	8,290	7,960	7,500	lb								
180.4	66.9	72.2	85.3	91.9	98.4	105.0	114.8	121.4	131.2	137.8	147.6	154.2	164.0	170.6	180.4	ft	26,460	24,290	20,040	18,390	16,980	15,740	14,150	13,230	13,230	12,520	11,600	11,050	10,320	9,880	9,260	lb														
164.0	75.8	85.3	91.9	98.4	105.0	114.8	121.4	131.2	137.5	149.3	154.2	164.0	ft	26,460	23,080	21,210	19,600	18,190	16,380	15,340	14,000	13,230	13,230	12,740	11,900	lb																				
147.6	82.3	91.9	98.4	105.0	114.8	121.4	131.2	137.8	146.0	ft	26,460	23,390	21,630	20,080	18,120	17,000	15,500	14,640	13,670	lb																										
131.2	84.0	91.9	98.4	105.0	114.8	121.4	129.6	ft	26,460	23,900	22,110	20,520	18,520	17,370	16,090	lb																														
114.8	83.7	91.9	98.4	105.0	113.2	ft	26,460	23,790	22,000	20,440	18,740	lb																																		



## DIAGRAMA DE CARGAS POWERLIFT

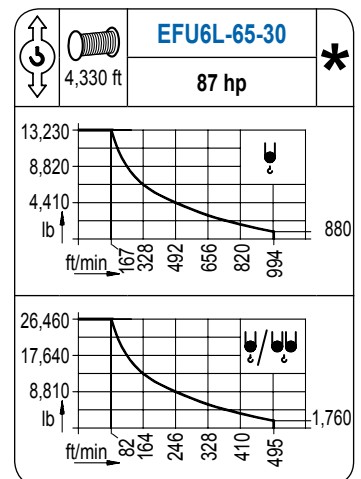
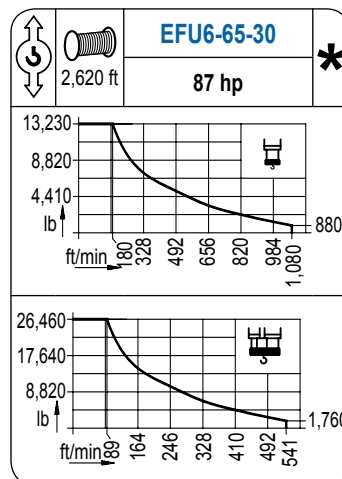
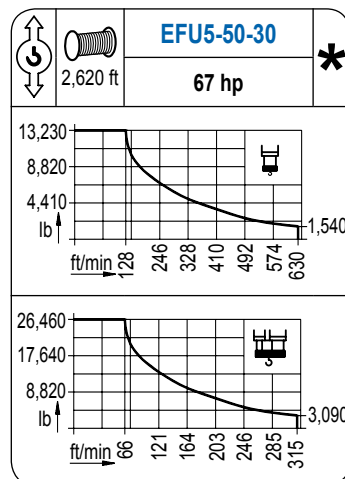
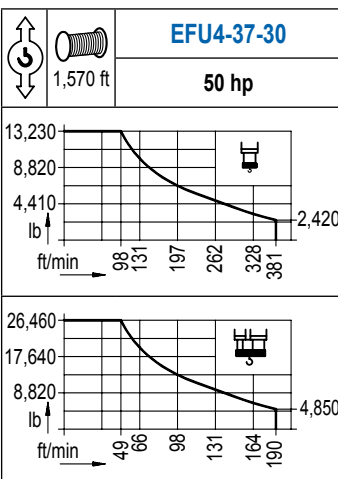
Load chart PowerLift / Diagramme de charges PowerLift / Lastdiagramm PowerLift / Diagramma di carico PowerLift / Диаграмма распределения нагрузки PowerLift

R (ft)	Icon 1										Icon 2																																			
229.7	52.2	65.6	72.2	82.0	88.6	94.2	102.4	114.8	121.4	131.2	137.8	147.6	154.2	164.0	170.6	180.4	187.0	196.9	203.4	213.3	219.8	229.7	ft	26,460	20,330	18,190	15,630	14,260	13,230	13,230	11,640	10,930	10,010	9,480	8,750	8,330	7,760	7,410	6,940	6,660	6,260	6,020	5,690	5,490	5,200	lb
213.3	58.4	65.6	72.2	82.0	88.6	98.4	105.6	115.2	121.4	131.2	137.8	147.6	154.2	164.0	170.6	180.4	187.0	196.9	203.4	213.3	ft	26,460	23,150	20,750	17,880	16,340	14,400	13,230	13,230	12,460	11,420	10,800	10,010	9,520	8,860	8,490	7,960	7,630	7,190	6,920	6,550	lb				
196.9	65.3	72.2	82.0	88.6	98.4	105.0	114.8	118.4	129.3	137.8	147.6	154.2	164.0	170.6	180.4	187.0	196.9	ft	26,460	23,660	20,410	18,670	16,510	15,300	13,760	13,230	13,230	12,320	11,420	10,870	10,140	9,700	9,100	8,750	8,250	lb										
180.4	71.9	82.0	88.6	98.4	105.0	114.8	121.4	130.6	142.7	147.6	154.2	164.0	170.6	180.4	ft	26,460	22,800	20,860	18,470	17,130	15,430	14,440	13,230	13,230	12,740	12,150	11,330	10,850	10,190	lb																
164.0	81.7	88.6	98.4	105.0	114.8	121.4	131.2	137.8	148.6	162.6	164.0	ft	26,460	24,120	21,380	19,860	17,920	16,800	15,340	14,460	13,230	13,230	13,100	lb																						
147.6	89.2	98.4	105.0	114.8	121.4	131.2	137.8	146.0	ft	26,460	23,680	22,000	19,860	18,650	17,040	16,090	15,040	lb																												
131.2	91.2	98.4	105.0	114.8	121.4	129.6	ft	26,460	24,230	22,530	20,350	19,090	17,700	lb																																
114.8	90.9	98.4	105.0	113.2	ft	26,460	24,160	22,460	20,610	lb																																				



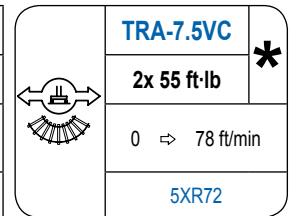
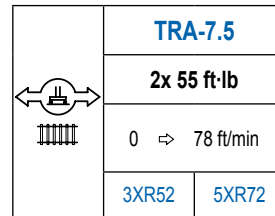
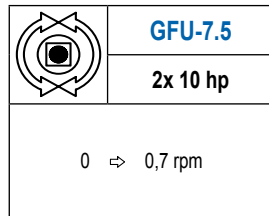
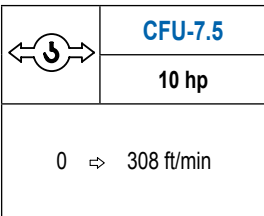
## MECANISMOS

Mechanisms / Mécanismes / Antriebe / Meccanismi / Механизмы



## MECANISMOS

Mechanisms / Mécanismes / Antriebe / Meccanismi / Механизмы



POTENCIA / POWER / PUISSANCE / LEISTUNG / POTENZA / МОЩНОСТЬ				Tensión de alimentación / Operating voltage / Tension de service / Betriebsspannung / Tensione di alimentazione / Напряжение источника питания	Generador / Generator / Générateur / Generator / Generatore / Генератор
Elevación / Hoist / Levage / Hub / Sollevamento / Тип механизма (подъем)	Carro / Trolley / Chariot / Laufkatze / Carrello / Грузовая тележка	Giro / Slewing / Rotation / Drehbewegung / Rotazione / Поворот	Traslación / Travel / Translation / Verfahrbewegung / Traslazione / Ход		
EFU4-37-30	CFU-7.5	(2x) GFU-7.5	(2x) TRA-7.5	480 V 3ph 60 Hz	115 kVA
EFU5-50-30					150 kVA
EFU6-65-30					170 kVA
EFU6L-65-30					170 kVA

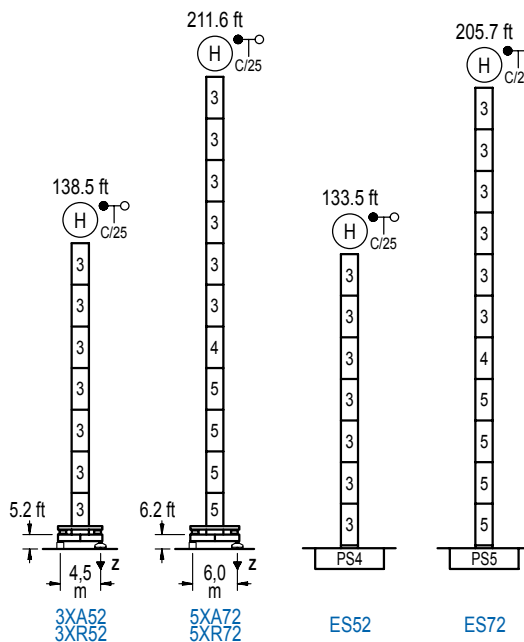
Opcional / Optional / En option / Kaufoption / Opzionale / Опционально

\*

## ALTURAS BAJO GANCHO

Heights under hook / Hauteurs sous crochet / Hakenhöhen / Altezza sotto gancio / Высота под крюком

∅ 6.6 ft

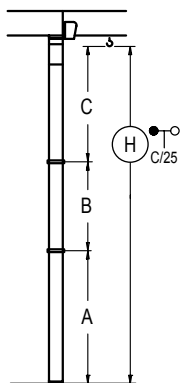


n°	Ref.	∅	h
3	S24	6.6	18.0
4	TS25	6.6	18.0
5	S25	6.6	18.0

Z máx.	En servicio / In operation / En service / In Betrieb / In servizio / При работе	3XR52.. 218 kip 5XR72.. 196 kip
	Fuera de servicio / Out of service / Hors service / Ausser Betrieb / Fuori servizio / В стационарном состоянии	3XR52.. 148 kip 5XR72.. 300 kip

## GRÚA ARRIOSTRADA

Braced crane / Grue à entretoisement / Abgespannter Kran / Gru ancorata / Нарастиваемый кран

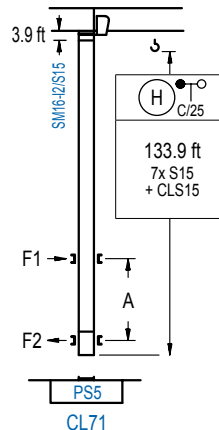


	3XA52	5XA72
A max	95.5	168.6
B max	- 72.2	- 72.2
C max	115.1 115.1	115.1 97.1
H max	210.6 282.8	283.8 337.9

	ES52	ES72
A max	90.6	162.7
B max	- 72.2	- 72.2
C max	115.1 115.1	115.1 97.1
H max	205.7 277.9	277.9 332.0

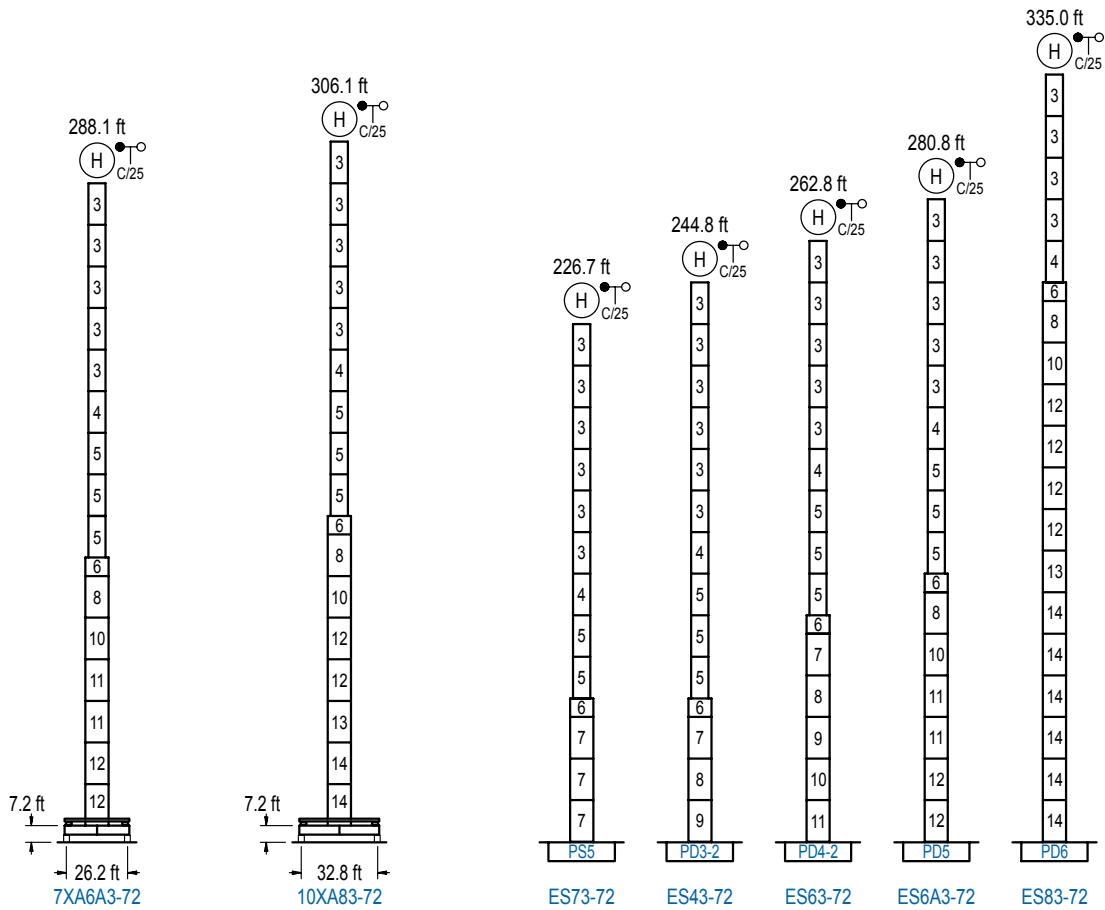
## GRÚA TREPADORA

Internal climbing crane / Grue avec cage de télescopage intérieure / Kran mit klettern im Gebäude / Gru in rampante in cavedio / Кран с самоподъемом



n°	Ref.	∅	h
14	S15	5.2	18.0
15	CLS15	5.2	10.2

Otras zonas de viento, alturas superiores, arriostramientos o trepado interno consultar / Other wind zones, additional hook heights, tie frames or internal climbing on request / Autres zones de vent, des hauteurs supplémentaires, entretoisements ou grues avec cage de télescopage intérieure, sur demande / Andere Windzonen, weitere Hakenhöhen, Abspannungen zum Gebäude oder Klettern im Gebäude auf Anfrage / Per zone con velocità del vento particolari, altezze superiori, ancoraggi o rampante in cavedio, consultare il fabbricante / При других ветренных зонах, при большой высоте, привязках к зданию или наращивании крана внутри здания проконсультируйтесь с нами



n°	Ref.	∅	h	n°	Ref.	∅	h	n°	Ref.	∅	h	n°	Ref.	∅	h
3	S24	6.6	18.0	7	S35	8.2	18.0	10	TD34	8.2	18.0	13	TD36B	8.2	18.0
4	TS25	6.6	18.0	8	TD33A	8.2	18.0	11	D34	8.2	18.0	14	D36	8.2	18.0
5	S25	6.6	18.0	9	D33	8.2	18.0	12	D35	8.2	18.0				
6	TMS35S25	8.2	3.3												

Otras zonas de viento o alturas superiores consultar / Other wind zones or additional hook heights on request / Autres zones de vent ou des hauteurs supplémentaires sur demande / Andere Windzonen oder weitere Hakenhöhen auf Anfrage / Per zone con velocità del vento particolari o altezze superiori consultare il fabbricante / При других ветренных зонах о при большой высоте проконсультируйтесь с нами



**Construcciones Metálicas COMANSA S. A.**

Tel.: (34) 948 335 020 / Fax: (34) 948 330 810 / e-mail: info@comansa.com  
Polígono Urbizkain E-31620 HUARTE-PAMPLONA.- SPAIN

DS.1308.07.IA 01/14 **16LC260/26,460 lb**