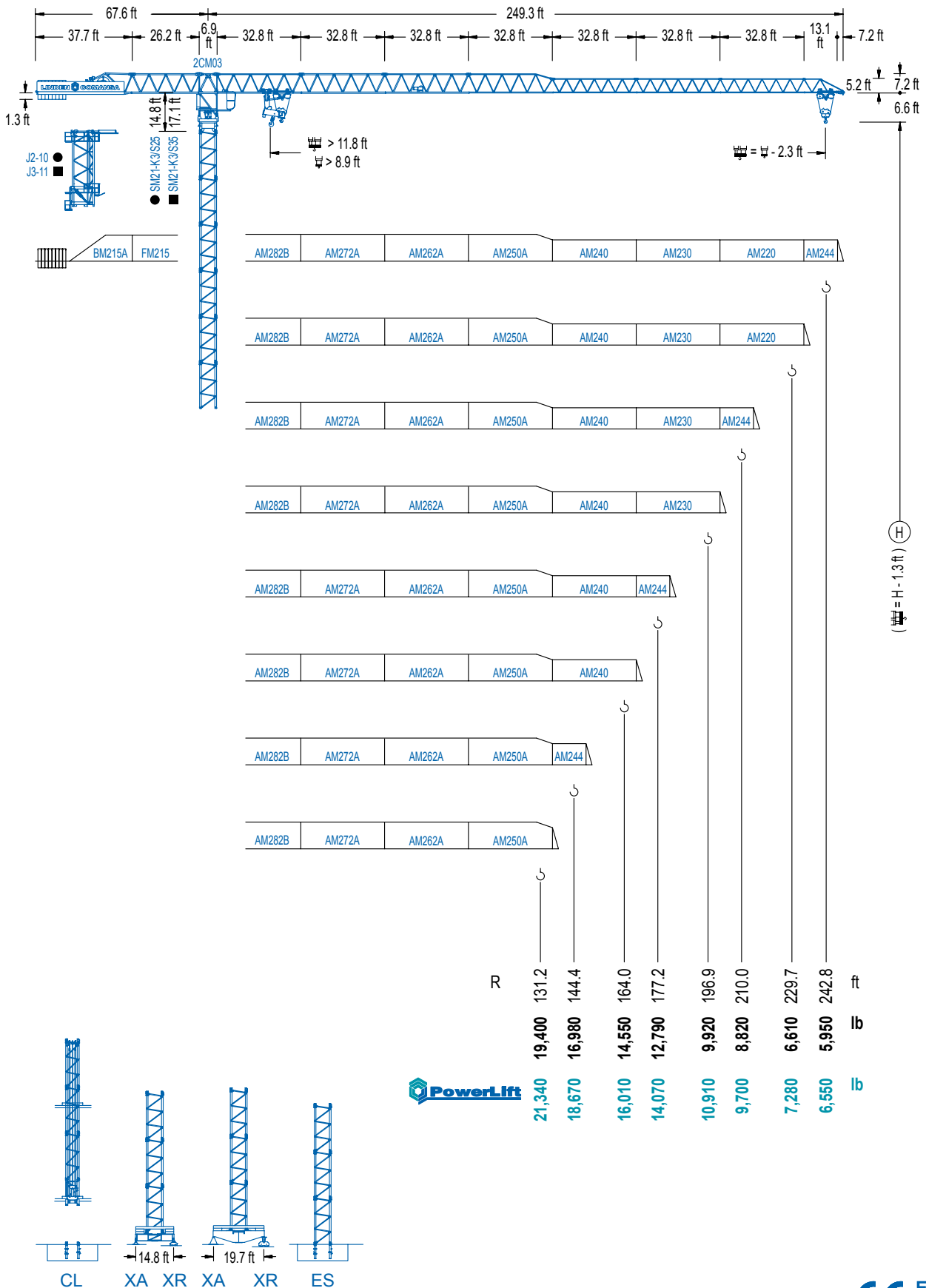


LC 2100

21 LC 335



44,090 lb



LC 2100

DIAGRAMA DE CARGAS

Load chart / Diagramme de charges / Lastdiagramm / Diagramma di carico / Диаграмма распределения нагрузки

R (ft)																				
242.8	40.4	49.2	59.1	65.6	72.8	78.1	88.6	98.4	105.0	114.8	124.7	131.2	144.4	164.0	177.2	196.9	210.0	229.7	242.8	ft
	44,090	35,010	28,260	24,960	22,050	22,050	19,140	17,020	15,830	14,310	13,050	12,300	11,020	9,520	8,710	7,670	7,100	6,370	5,950	lb
229.7	41.7	49.2	59.1	65.6	74.8	80.4	88.6	98.4	105.0	114.8	124.7	131.2	144.4	164.0	177.2	196.9	210.0	229.7	ft	
	44,090	36,130	29,210	25,790	22,050	22,050	19,750	17,570	16,360	14,790	13,490	12,720	11,420	9,850	9,020	7,960	7,360	6,610	lb	
210.0	47.6	59.1	65.6	72.2	86.6	93.2	98.4	105.0	114.8	124.7	131.2	144.4	164.0	177.2	196.9	210.0	ft			
	44,090	34,480	30,510	27,310	22,050	22,050	20,720	19,310	17,480	15,960	15,060	13,540	11,730	10,740	9,500	8,820	lb			
196.9	49.2	59.1	65.6	72.2	82.0	89.6	96.5	105.0	114.8	124.7	131.2	144.4	164.0	177.2	196.9	ft				
	44,090	35,850	31,750	28,440	24,490	22,050	22,050	20,080	18,210	16,620	15,700	14,110	12,210	11,200	9,920	lb				
177.2	55.1	59.1	65.6	72.2	82.0	88.6	100.4	108.3	114.8	124.7	131.2	144.4	164.0	177.2	ft					
	44,090	40,700	36,090	32,340	27,910	25,530	22,050	22,050	20,680	18,890	17,860	16,070	13,930	12,790	lb					
164.0	57.1	65.6	72.2	82.0	88.6	98.4	104.0	112.5	124.7	131.2	144.4	164.0	ft							
	44,090	37,590	33,710	29,100	26,630	23,550	22,050	22,050	19,710	18,630	16,780	14,550	lb							
144.4	57.4	65.6	72.2	82.0	88.6	98.4	105.0	113.8	124.7	131.2	144.4	ft								
	44,090	37,940	34,040	29,390	26,900	23,790	22,050	22,050	19,950	18,850	16,980	lb								
131.2	58.7	65.6	72.2	82.0	88.6	98.4	107.6	116.8	124.7	131.2	ft									
	44,090	38,980	34,960	30,200	27,650	24,470	22,050	22,050	20,520	19,400	lb									

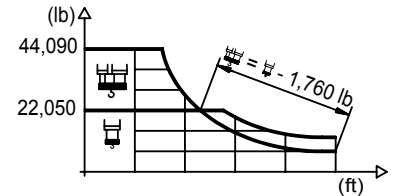


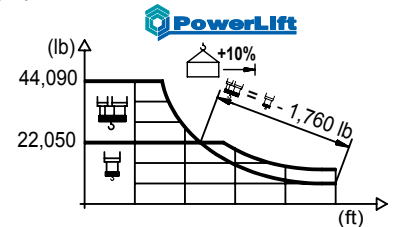


DIAGRAMA DE CARGAS POWERLIFT

Load chart PowerLift / Diagramme de charges PowerLift / Lastdiagramm PowerLift / Diagramma di carico PowerLift / Диаграмма распределения нагрузки PowerLift

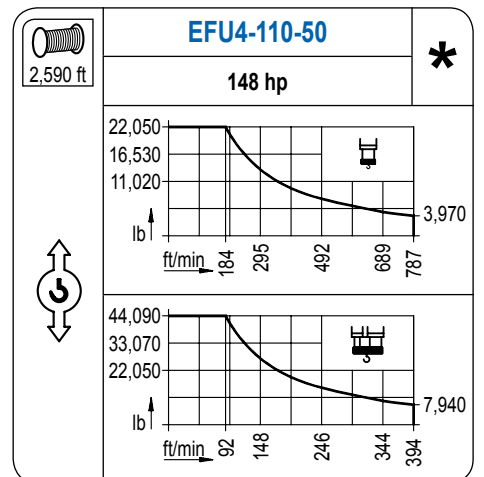
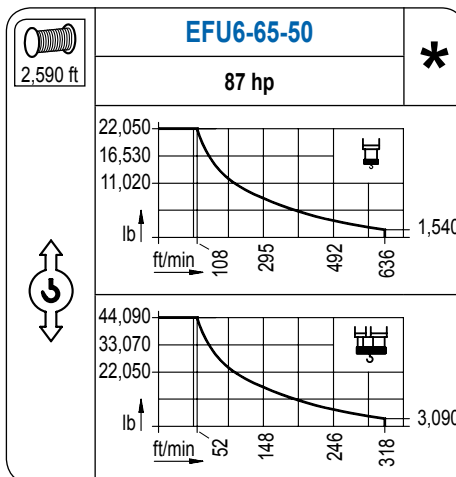
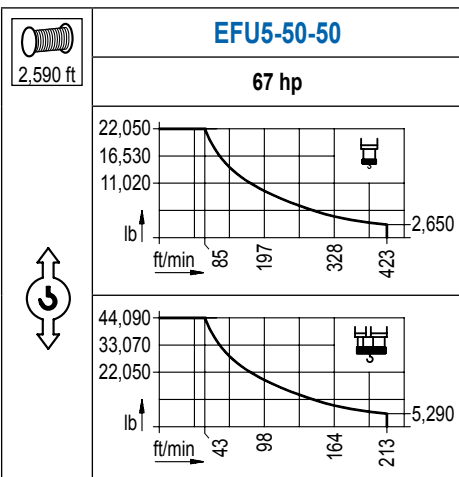
R (ft)																				
242.8	43.3	49.2	59.1	65.6	78.4	84.0	91.9	98.4	105.0	114.8	124.7	131.2	144.4	164.0	177.2	196.9	210.0	229.7	242.8	ft
	44,090	38,100	30,820	27,250	22,050	22,050	20,080	18,580	17,310	15,650	14,260	13,470	12,080	10,430	9,550	8,420	7,800	7,010	6,550	lb
229.7	44.6	49.2	59.1	65.6	75.5	80.7	86.6	98.4	105.0	114.8	124.7	131.2	144.4	164.0	177.2	196.9	210.0	229.7	ft	
	44,090	39,370	31,880	28,170	23,920	22,050	22,050	19,160	17,840	16,140	14,730	13,890	12,480	10,780	9,880	8,730	8,090	7,280	lb	
210.0	51.5	59.1	65.6	75.5	82.0	93.8	100.7	105.0	114.8	124.7	131.2	144.4	164.0	177.2	196.9	210.0	ft			
	44,090	37,720	33,420	28,440	25,790	22,050	22,050	21,100	19,110	17,460	16,490	14,840	12,850	11,770	10,450	9,700	lb			
196.9	53.5	59.1	65.6	75.5	82.0	91.9	97.1	104.7	114.8	124.7	131.2	144.4	164.0	177.2	196.9	ft				
	44,090	39,260	34,810	29,630	26,900	23,570	22,050	22,050	19,930	18,190	17,200	15,480	13,400	12,300	10,910	lb				
177.2	59.7	65.6	75.5	82.0	91.9	98.4	109.3	117.8	124.7	131.2	144.4	164.0	177.2	ft						
	44,090	39,620	33,770	30,710	26,940	24,870	22,050	22,050	20,720	19,600	17,640	15,320	14,070	lb						
164.0	62.0	75.5	82.0	91.9	98.4	113.2	122.7	124.7	131.2	144.4	164.0	ft								
	44,090	35,230	32,030	28,130	25,970	22,050	22,050	21,630	20,460	18,430	16,010	lb								
144.4	62.7	75.5	82.0	91.9	98.4	114.5	124.0	124.7	131.2	144.4	ft									
	44,090	35,630	32,390	28,440	26,280	22,050	22,050	21,910	20,720	18,670	lb									
131.2	64.0	75.5	82.0	91.9	98.4	105.0	117.5	127.3	131.2	ft										
	44,090	36,620	33,310	29,260	27,030	25,090	22,050	22,050	21,340	lb										



LC 2100

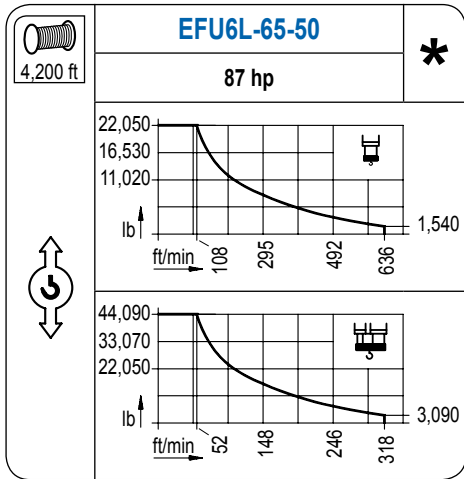
MECANISMOS

Mechanisms / Mécanismes / Antriebe / Meccanismi / Механизмы

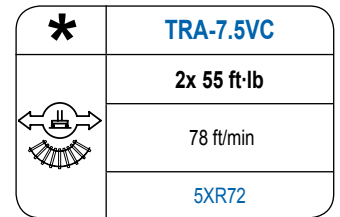
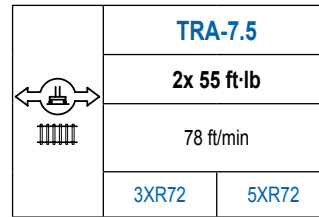
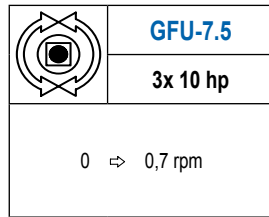
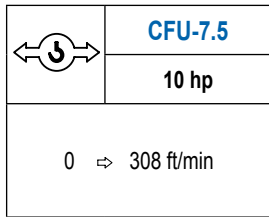
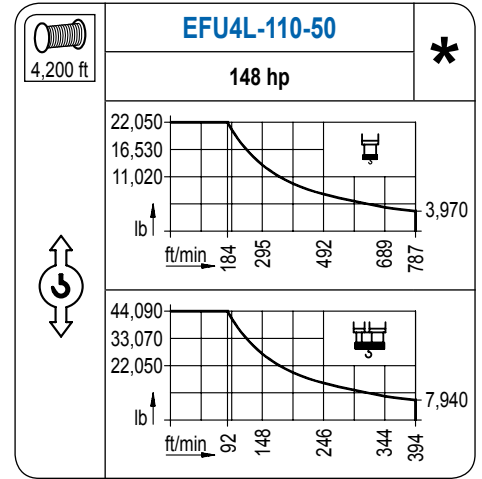


MECANISMOS

Mechanisms / Mécanismes / Antriebe / Meccanismi / Механизмы



Para mecanismos de alta capacidad de cable consultar cargas. / For mechanisms with high drum capacity, request loads. / Pour des mécanismes avec une grande capacité de câble il faut consulter. / Für Hubmechanismen mit hoher Kabelkapazität, Lastdiagramm anfragen. / Gru con tamburo ad alta capacità di avvolgimento fune, consultare il diagramma di carico. / Проконсультируйтесь о нагрузках при механизмах с большей вместимостью кабеля.



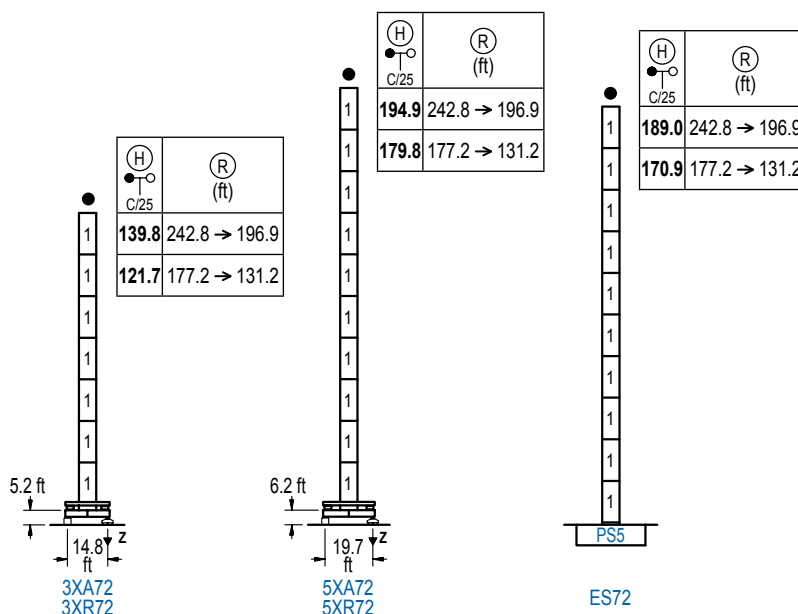
POTENCIA / POWER / PUISSANCE / LEISTUNG / POTENZA / МОЩНОСТЬ				Tensión de alimentación / Operating voltage / Tension de service / Betriebsspannung / Tensione di alimentazione / Напряжение источника питания	Generador / Generator / Générateur / Generator / Generatore / Генератор
Elevación / Hoist / Levage / Hub / Sollevamento / Тип механизма (подъем)	Carro / Trolley / Chariot / Laufkatze / Carrelo / Грузовая тележка	Giro / Slewing / Rotation / Drehbewegung / Rotazione / Поворот	Traslación / Travel / Translation / Verfahrbewegung / Traslazione / Ход		
EFU5-50-50	CFU-7.5	(3x) GFU-7.5	(2x) TRA-7.5	480 V 3ph 60 Hz	160 kVA
EFU6-65-50					180 kVA
EFU6L-65-50					180 kVA
EFU4-110-50					250 kVA
EFU4L-110-50					250 kVA

Opcional / Optional / En option / Kaufoption / Opzionale / Опционально
*

ALTURAS BAJO GANCHO

Heights under hook / Hauteurs sous crochet / Hakenhöhen / Altezza sotto gancio / Высота под крюком

∅ 6.6 ft



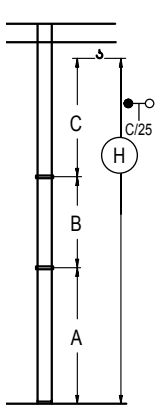
n°	Ref.	∅	h
1	S25	6.6	18.0
1x S25 = 1x S25M			

Z máx.	En servicio / In operation / En service / In Betrieb / In servizio / При работе	3XR72.. 225 kip 5XR72.. 225 kip
	Fuera de servicio / Out of service / Hors service / Ausser Betrieb / Fuori servizio / В стационарном состоянии	3XR72.. 174 kip 5XR72.. 243 kip

Otras zonas de viento o alturas superiores consultar / Other wind zones or additional hook heights on request / Autres zones de vent ou des hauteurs supplémentaires sur demande / Andere Windzonen oder weitere Hakenhöhen auf Anfrage / Per zone con velocità del vento particolari o altezze superiori consultare il fabbricante / При других ветренных зонах о при большой высоте проконсультируйтесь с нами

GRÚA ARRIOSTRADA

Braced crane / Grue à entretoisement / Abgespannter Kran / Gru ancorata / Нарастиваемый кран

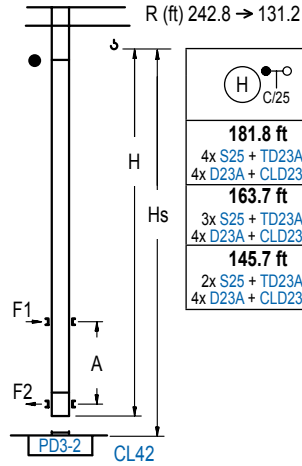


	3XA72				5XA72			
R (ft)	242.8 → 196.9	177.2 → 131.2	242.8 → 196.9	177.2 → 131.2	242.8 → 196.9	177.2 → 131.2	242.8 → 196.9	177.2 → 131.2
A max	95.5	77.4	150.6	132.5	95.5	77.4	150.6	132.5
A min	77.4	77.4	77.4	77.4	77.4	77.4	77.4	77.4
B max	108.3	108.3	108.3	108.3	108.3	108.3	108.3	108.3
B min	54.1	54.1	54.1	54.1	54.1	54.1	54.1	54.1
C max	170.6	152.6	152.6	152.6	152.6	152.6	152.6	152.6
H max	266.1	356.3	230.0	338.3	303.1	411.4	285.1	393.4

ES72			
R (ft)	242.8 → 196.9	177.2 → 131.2	
A max	144.7	126.6	
A min	72.5	72.5	
B max	108.3	108.3	
B min	54.1	54.1	
C max	170.6	152.6	152.6
H max	315.3	405.5	279.2

GRÚA TREPADORA

Internal climbing crane / Grue avec cage de télescopage intérieure / Kran mit kletterm im Gebäude / Gru in rampante in cavedio / Кран с самоподъемом



H	Hs < 1,310 ft	
	A max (ft)	A min (ft)
181.8 ft 4x S25 + TD23A + 4x D23A + CLD23A-1	73.2	32.8
163.7 ft 3x S25 + TD23A + 4x D23A + CLD23A-1	64.3	29.5
145.7 ft 2x S25 + TD23A + 4x D23A + CLD23A-1	55.1	23.0

nº	Ref.	∅	h
1	S25	6.6	18.0
2	TD23A	6.6	18.0
4	D23A	6.6	18.0
18	CLD23A-1	6.6	11.2

1x S25 = 1x S25M

Otras zonas de viento, alturas superiores, arriostramientos o trepado interno consultar / Other wind zones, additional hook heights, tie frames or internal climbing on request / Autres zones de vent, des hauteurs supplémentaires, entretoisements ou grues avec cage de télescopage intérieure, sur demande / Andere Windzonen, weitere Hakenhöhen, Abspannungen zum Gebäude oder Kletterm im Gebäude auf Anfrage / Per zone con velocità del vento particolari, altezze superiori, ancoraggi o rampante in cavedio, consultare il fabbricante / При других ветренных зонах, при большой высоте, привязках к зданию или наращивании крана внутри здания проконсультируйтесь с нами

ALTURAS BAJO GANCHO

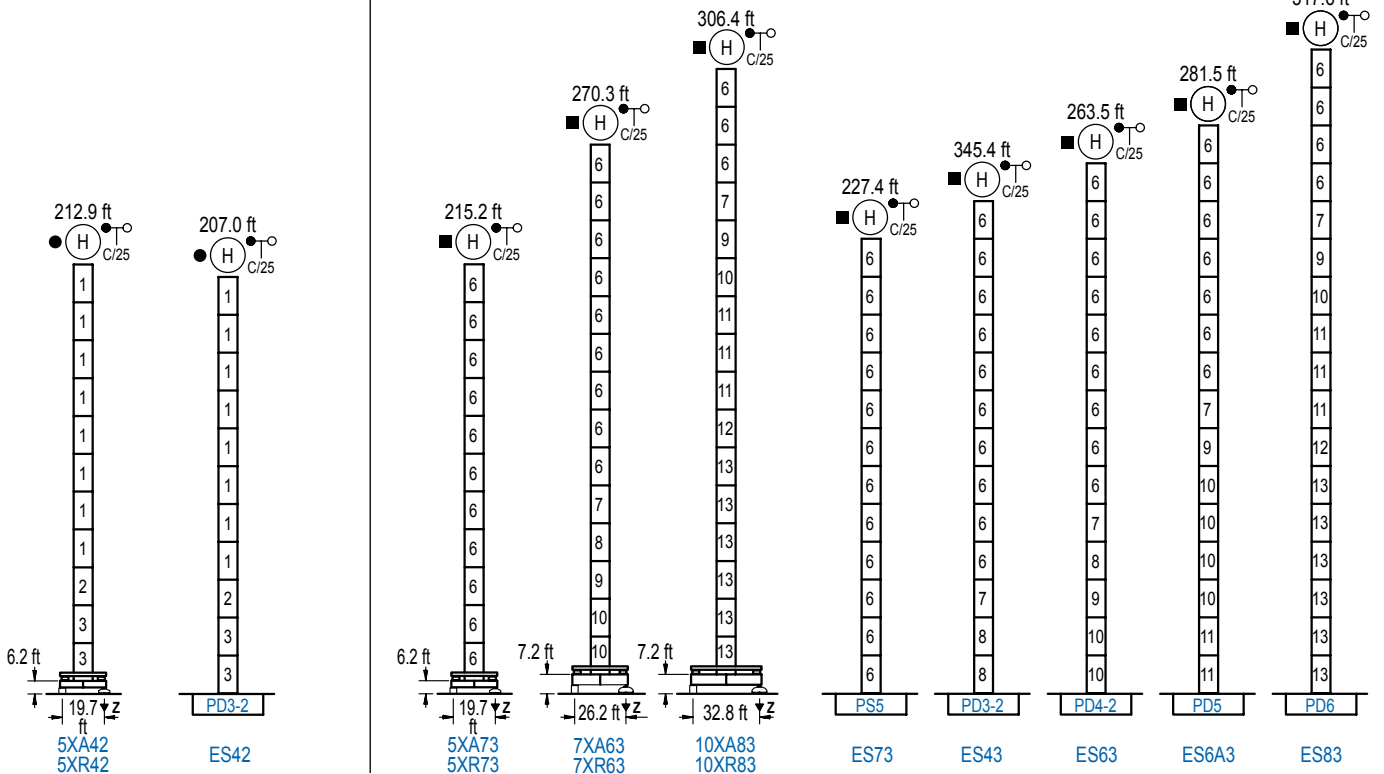
Heights under hook / Hauteurs sous crochet / Hakenhöhen / Altezza sotto gancio / Высота под крюком

∅ 6.6 ft

ALTURAS BAJO GANCHO

Heights under hook / Hauteurs sous crochet / Hakenhöhen / Altezza sotto gancio / Высота под крюком

∅ 8.2 ft



nº	Ref.	∅	h	nº	Ref.	∅	h	nº	Ref.	∅	h	nº	Ref.	∅	h
1	S25	6.6	18.0	6	S35	8.2	18.0	9	TD34	8.2	18.0	12	TD36B	8.2	18.0
2	TD23A	6.6	18.0	7	TD33A	8.2	18.0	10	D34	8.2	18.0	13	D36	8.2	18.0
3	D23	6.6	18.0	8	D33	8.2	18.0	11	D35	8.2	18.0				

1x S25 = 1x S25M

Otras zonas de viento o alturas superiores consultar / Other wind zones or additional hook heights on request / Autres zones de vent ou des hauteurs supplémentaires sur demande / Andere Windzonen oder weitere Hakenhöhen auf Anfrage / Per zone con velocità del vento particolari o altezze superiori consultare il fabbricante / При других ветренных зонах о при большой высоте проконсультируйтесь с нами



Construcciones Metálicas COMANSA S. A.

Tel.: (+34) 948 335 020 / Fax: (+34) 948 330 810 / E-mail: info@comansa.com
Polígono Urbizkain, Ctra. Aoiz nº1 31620, Huarte (Navarra), SPAIN

DS.1548.08.IA 11/16 21 LC 335/44,090 Ib

Reserva de modificaciones. Subject to modifications. Modifications réservées. Konstruktionsänderungen vorbehalten.
Il fabbricante si riserva la facoltà di apportare modifiche. Возможны изменения.