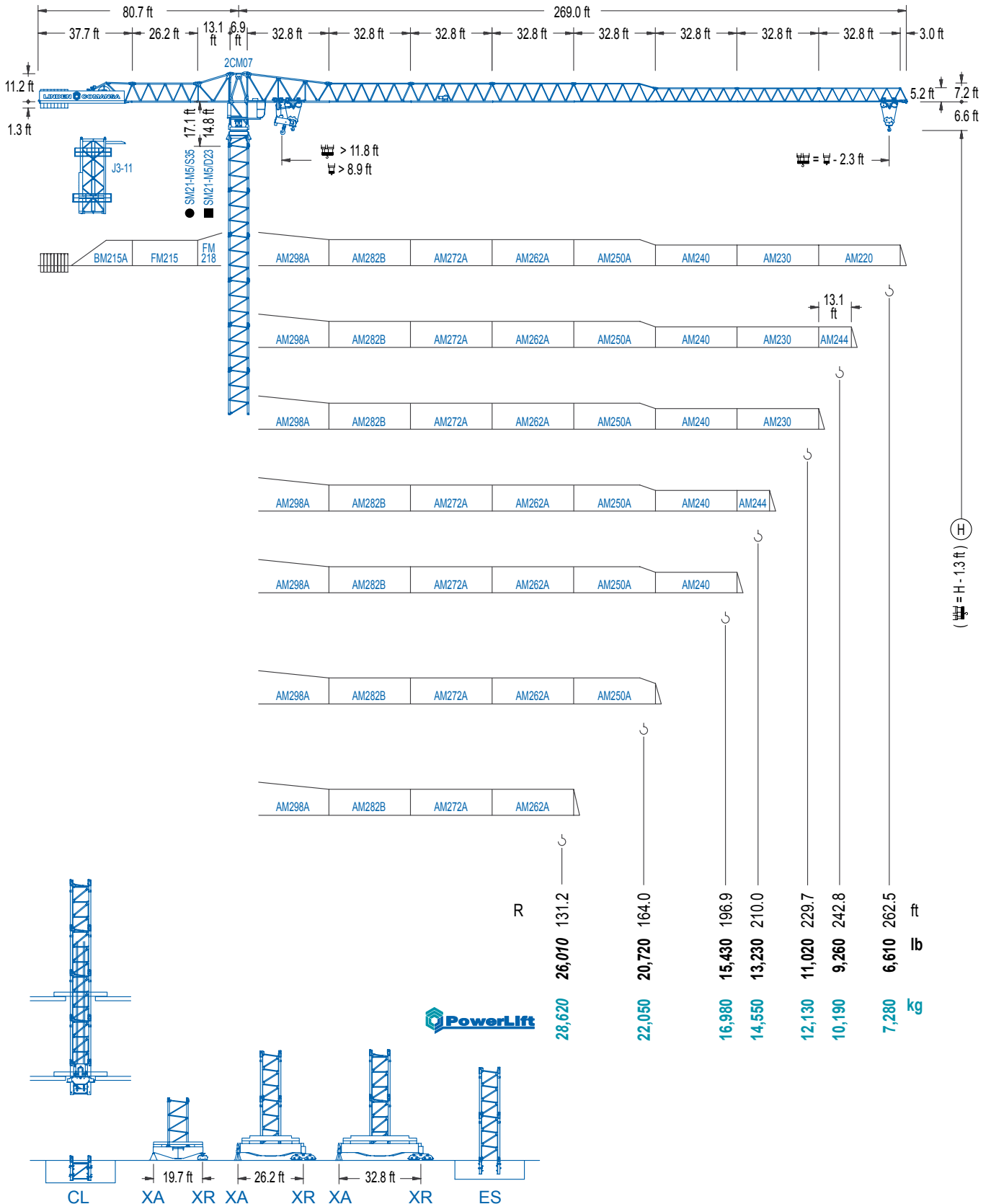


LC 2100

21 LC 450

44,090 lb



LC 2100

DIAGRAMA DE CARGAS

Load chart / Diagramme de charges / Lastdiagramm / Diagramma di carico / Диаграмма распределения нагрузки





R (ft)																				
262.5	46.9 44,090	59.1 33,930	65.6 30,030	72.2 26,870	85.3 22,050	91.5 22,050	98.4 20,330	105.0 18,920	114.8 17,130	124.7 15,630	131.2 14,770	147.6 12,940	164.0 11,490	180.4 10,300	196.9 9,300	210.0 8,640	229.7 7,760	242.8 7,280	262.5 6,610	ft lb
242.8		57.1 44,090	65.6 37,590	72.2 33,710	82.0 29,100	91.9 25,530	98.4 23,550	104.0 22,050	111.9 22,050	124.7 19,580	131.2 18,500	147.6 16,250	164.0 14,440	180.4 12,990	196.9 11,770	210.0 10,930	229.7 9,880	242.8 9,260	ft lb	
229.7			62.3 44,090	72.2 37,430	82.0 32,360	91.9 28,420	98.4 26,230	105.0 24,340	114.2 22,050	123.0 22,050	131.2 20,520	147.6 18,030	164.0 16,070	180.4 14,460	196.9 13,120	210.0 12,190	229.7 11,020	ft lb		
210.0				66.9 44,090	72.2 40,430	82.0 34,990	91.9 30,750	98.4 28,420	105.0 26,390	114.8 23,790	122.7 22,050	132.2 22,050	147.6 19,510	164.0 17,390	180.4 15,650	196.9 14,220	210.0 13,230	ft lb		
196.9					71.9 44,090	82.0 37,900	91.9 33,360	98.4 30,820	105.0 28,640	114.8 25,840	124.7 23,500	131.6 22,050	142.1 22,050	164.0 18,850	180.4 16,980	196.9 15,430	ft lb			
164.0						77.8 44,090	82.0 41,560	91.9 36,600	98.4 33,840	105.0 31,460	114.8 28,420	124.7 25,860	143.0 22,050	154.9 22,050	164.0 20,720	ft lb				
131.2							81.0 44,090	91.9 38,250	98.4 35,410	105.0 32,910	114.8 29,740	124.7 27,070	128.9 26,010	ft lb						

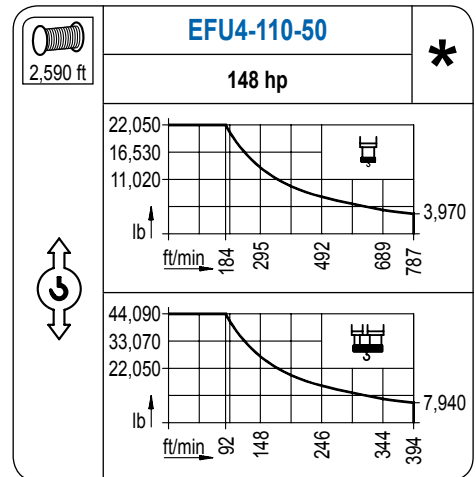
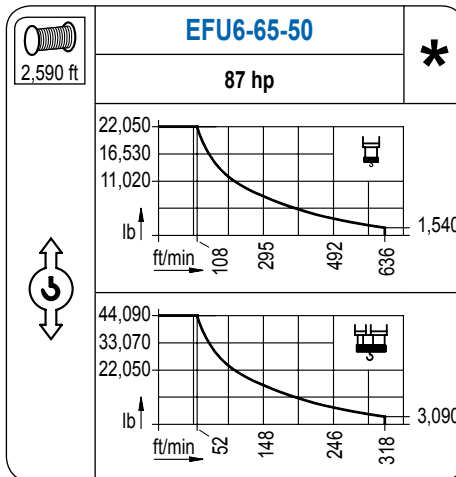
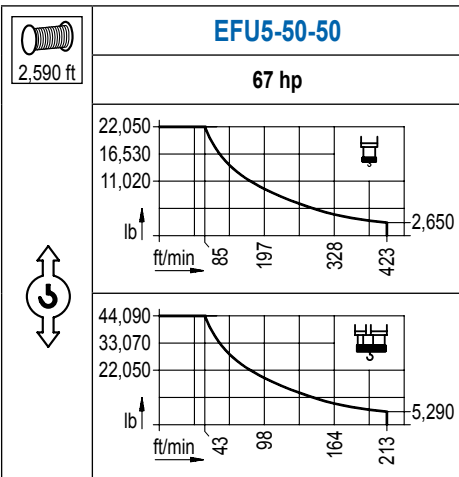
DIAGRAMA DE CARGAS POWERLIFT

Load chart PowerLift / Diagramme de charges PowerLift / Lastdiagramm PowerLift / Diagramma di carico PowerLift / Диаграмма распределения нагрузки PowerLift

R (ft)																				
262.5	50.5 44,090	59.1 36,990	65.6 32,760	72.2 29,340	82.0 25,290	92.2 22,050	98.8 22,050	105.0 20,610	114.8 18,670	124.7 17,040	131.2 16,090	147.6 14,130	164.0 12,540	180.4 11,270	196.9 10,190	210.0 9,460	229.7 8,530	242.8 7,980	262.5 7,280	ft lb
242.8		61.7 44,090	65.6 41,120	72.2 36,910	82.0 31,900	91.9 28,000	98.4 25,860	105.0 23,990	112.9 22,050	121.4 22,050	131.2 20,240	147.6 17,770	164.0 15,830	180.4 14,240	196.9 12,920	210.0 12,020	229.7 10,850	242.8 10,190	ft lb	
229.7			67.6 44,090	72.2 41,010	82.0 35,490	91.9 31,220	98.4 28,840	105.0 26,790	114.8 24,140	124.0 22,050	133.5 22,050	147.6 19,780	164.0 17,610	180.4 15,870	196.9 14,420	210.0 13,400	229.7 12,130	ft lb		
210.0				72.5 44,090	82.0 38,430	91.9 33,800	98.4 31,260	105.0 29,030	114.8 26,210	124.7 23,830	133.2 22,050	143.7 22,050	164.0 19,090	180.4 17,200	196.9 15,630	210.0 14,550	ft lb			
196.9					78.1 44,090	82.0 41,670	91.9 36,680	98.4 33,950	105.0 31,550	114.8 28,480	124.7 25,930	143.4 22,050	154.9 22,050	164.0 20,720	180.4 18,670	196.9 16,980	ft lb			
164.0						84.3 44,090	91.9 40,040	98.4 37,040	105.0 34,460	114.8 31,150	124.7 28,370	131.2 26,760	155.2 22,050	164.0 22,050	ft lb					
131.2							87.9 44,090	91.9 41,950	98.4 38,850	105.0 36,130	114.8 32,670	124.7 29,760	128.9 28,620	ft lb						

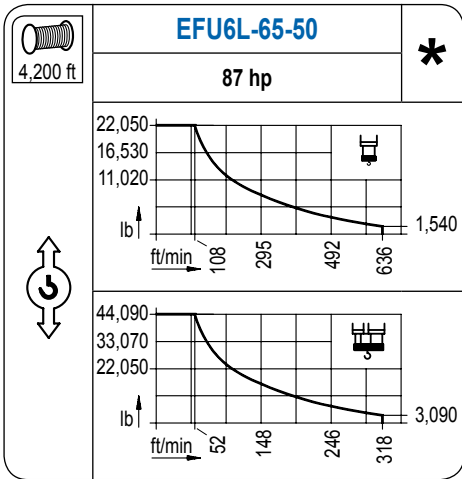
MECANISMOS

Mechanisms / Mécanismes / Antriebe / Meccanismi / Механизмы

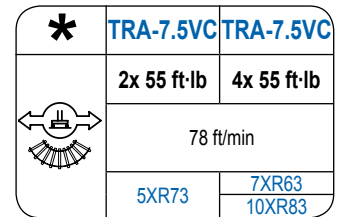
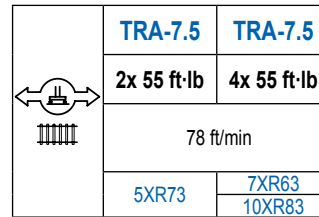
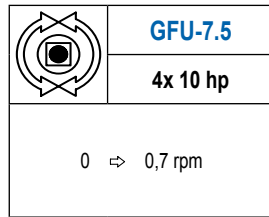
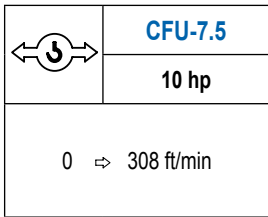
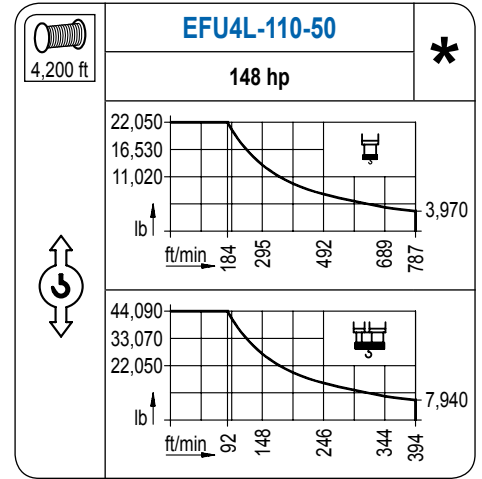


MECANISMOS

Mechanisms / Mécanismes / Antriebe / Meccanismi / Механизмы



Para mecanismos de alta capacidad de cable consultar cargas. / For mechanisms with high drum capacity, request loads. / Pour des mécanismes avec une grande capacité de câble il faut consulter. / Für Hubmechanismen mit hoher Kabelkapazität, Lastdiagramm anfragen. / Gru con tamburo ad alta capacità di avvolgimento fune, consultare il diagramma di carico. / Проконсультируйтесь о нагрузках при механизмах с большей вместимостью кабеля.



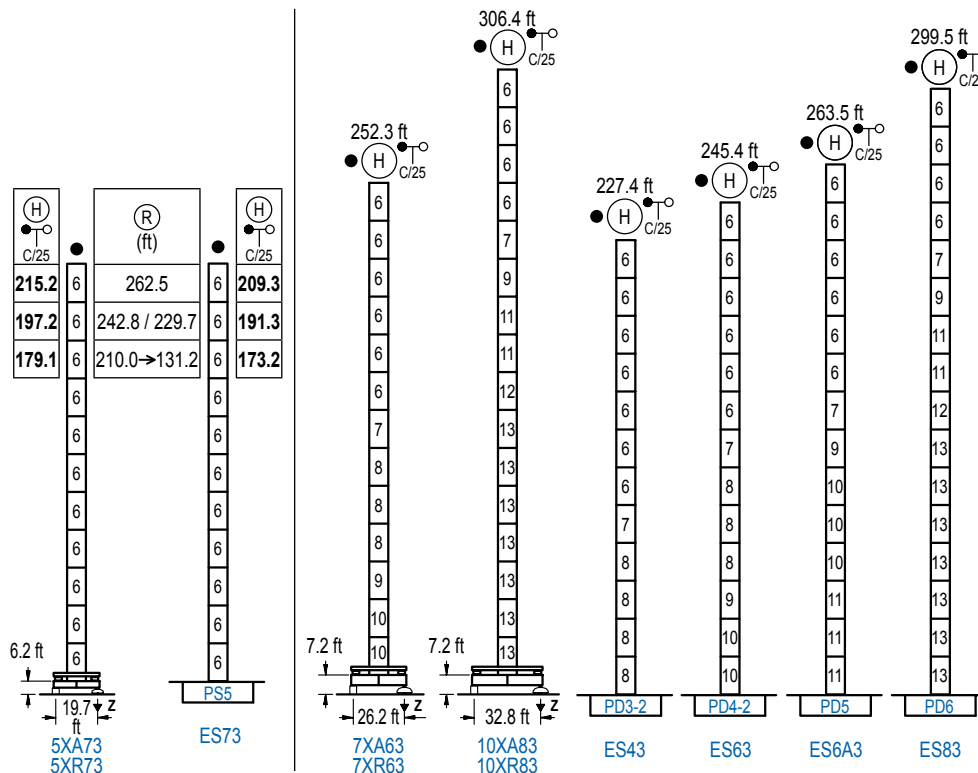
POTENCIA / POWER / PUISSANCE / LEISTUNG / POTENZA / МОЩНОСТЬ				Tensión de alimentación / Operating voltage / Tension de service / Betriebsspannung / Tensione di alimentazione / Напряжение источника питания	Generador / Generator / Générateur / Generator / Generatore / Генератор
Elevación / Hoist / Levage / Hub / Sollevamento / Тип механизма (подъем)	Carro / Trolley / Chariot / Laufkatze / Carrelo / Грузовая тележка	Giro / Slewing / Rotation / Drehbewegung / Rotazione / Поворот	Traslación / Travel / Translation / Verfahrbewegung / Traslazione / Ход		
EFU5-50-50	CFU-7.5	(4x) GFU-7.5	(2x) TRA-7.5 (4x) TRA-7.5	480 V 3ph 60 Hz	170 kVA
EFU6-65-50					195 kVA
EFU6L-65-50					195 kVA
EFU4-110-50					260 kVA
EFU4L-110-50					260 kVA

Optional / Optional / En option / Kaufoption / Opzionale / Опционально

ALTURAS BAJO GANCHO

Heights under hook / Hauteurs sous crochet / Hakenhöhen / Altezza sotto gancio / Высота под крюком

∅ 8.2 ft



n°	Ref.	∅	h
6	S35	8.2	18.0
7	TD33A	8.2	18.0
8	D33	8.2	18.0
9	TD34	8.2	18.0
10	D34	8.2	18.0
11	D35	8.2	18.0
12	TD36B	8.2	18.0
13	D36	8.2	18.0

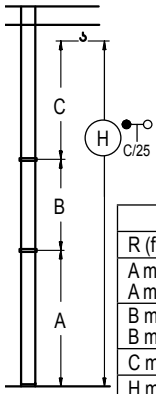
Z máx.	En servicio / In operation / En service / In Betrieb / In servizio / При работе	5XR73....265 kip 7XR63....269 kip 10XR83...302 kip
	Fuera de servicio / Out of service / Hors service / Ausser Betrieb / Fuori servizio / В стационарном состоянии	5XR73....333 kip 7XR63....364 kip 10XR83...483 kip

Otras zonas de viento o alturas superiores consultar / Other wind zones or additional hook heights on request / Autres zones de vent ou des hauteurs supplémentaires sur demande / Andere Windzonen oder weitere Hakenhöhen auf Anfrage / Per zone con velocità del vento particolari o altezze superiori consultare il fabbricante / При других ветренных зонах о при большой высоте проконсультируйтесь с нами

GRÚA ARRIOSTRADA

Braced crane / Grue à entretoisement / Abgespannter Kran / Gru ancorata / Нарастиваемый кран

∅ 8.2 ft



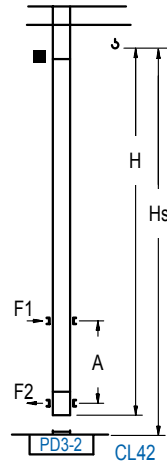
	5XA73				7XA63	10XA83
R (ft)	262.5	242.8 / 229.7	210.0 → 131.2	262.5 → 131.2	262.5 → 131.2	262.5 → 131.2
A max	168.6	162.4	132.5	205.7	205.7	259.8
A min	77.4	77.4	96.5	115.5	115.5	205.7
B max	-	108.3	-	108.3	-	108.3
B min	-	72.2	-	72.2	-	72.2
C max	154.9	154.9	154.9	154.9	154.9	154.9
H max	323.5	431.8	305.4	413.7	287.4	395.7
				360.6	468.8	414.7
				523.0		

	ES73			ES43	ES63	ES6A3	ES83
R (ft)	262.5	242.8 / 229.7	210.0 → 131.2	262.5 → 131.2	262.5 → 131.2	262.5 → 131.2	262.5 → 131.2
A max	162.7	144.7	126.6	180.8	198.8	216.9	253.0
A min	90.6	90.6	90.6	90.6	108.6	126.6	198.8
B max	-	108.3	-	108.3	-	108.3	-
B min	-	72.2	-	72.2	-	72.2	-
C max	154.9	154.9	154.9	154.9	154.9	154.9	154.9
H max	317.6	425.9	299.5	407.8	281.5	389.8	335.6
				443.9	353.7	461.9	371.7
				480.0	407.8	516.1	

GRÚA TREPADORA

Internal climbing crane / Grue avec cage de télescopage intérieure / Kran mit Klettern im Gebäude / Gru in rampante in cavedito / Кран с самоподъемом

∅ 6.6 ft



H	Hs < 1,310 ft	
	A max (ft)	A min (ft)
163.7 ft 4x D23 + 4x D23A + CLD23A-1	64.3	29.5
145.7 ft 3x D23 + 4x D23A + CLD23A-1	55.1	26.2
127.6 ft 2x D23 + 4x D23A + CLD23A-1	46.3	23.0

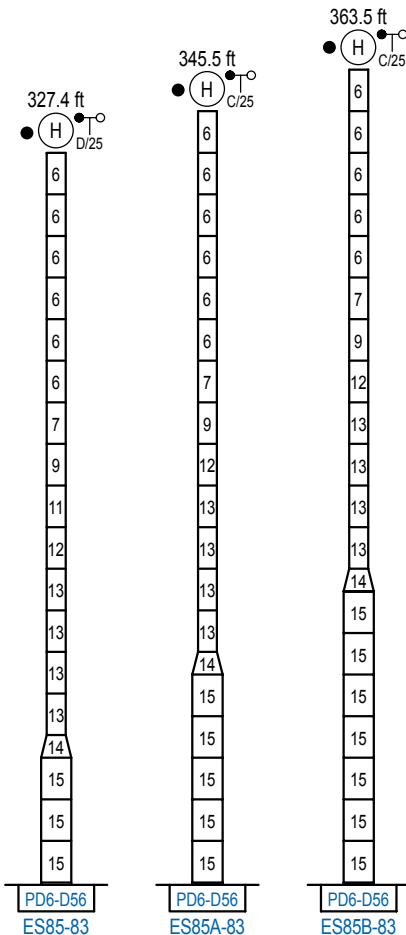
nº	Ref.	∅	h
3	D23	6.6	18.0
4	D23A	6.6	18.0
18	CLD23A-1	6.6	11.2

Otras zonas de viento, alturas superiores, arriostramientos o trepado interno consultar / Other wind zones, additional hook heights, tie frames or internal climbing on request / Autres zones de vent, des hauteurs supplémentaires, entretoisements ou grues avec cage de télescopage intérieure, sur demande / Andere Windzonen, weitere Hakenhöhen, Abspannungen zum Gebäude oder Klettern im Gebäude auf Anfrage / Per zone con velocità del vento particolari, altezze superiori, ancoraggi o rampante in cavedito, consultare il fabbricante / При других ветренных зонах, при большой высоте, привязках к зданию или наращивании крана внутри здания проконсультируйтесь с нами

ALTURAS ESPECIALES

Special heights / Spéciaux hauteurs / Extra Höhen / Conformazioni raccordate per altezze speciali / Для специальной высоты

∅ 13.1 ft



nº	Ref.	∅	h
6	S35	8.2	18.0
7	TD33A	8.2	18.0
8	D33	8.2	18.0
9	TD34	8.2	18.0
10	D34	8.2	18.0
11	D35	8.2	18.0
12	TD36B	8.2	18.0
13	D36	8.2	18.0
14	TD56D36	13.1	9.8
15	D56	13.1	18.0

Otras zonas de viento o alturas superiores consultar / Other wind zones or additional hook heights on request / Autres zones de vent ou des hauteurs supplémentaires sur demande / Andere Windzonen oder weitere Hakenhöhen auf Anfrage / Per zone con velocità del vento particolari o altezze superiori consultare il fabbricante / При других ветренных зонах о большой высоте проконсультируйтесь с нами



Construcciones Metálicas COMANSA S. A.

Tel.: (+34) 948 335 020 / Fax: (+34) 948 330 810 / E-mail: info@comansa.com
Polígono Urbizkain, Ctra. Aoiz nº1 31620, Huarte (Navarra), SPAIN

DS.1548.09.IA 02/16 21 LC 450/44,090 ft

Reserva de modificaciones. Subject to modifications. Modifications réservées. Konstruktionsänderungen vorbehalten.
Il fabbricante si riserva la facoltà di apportare modifiche. Возможны изменения.