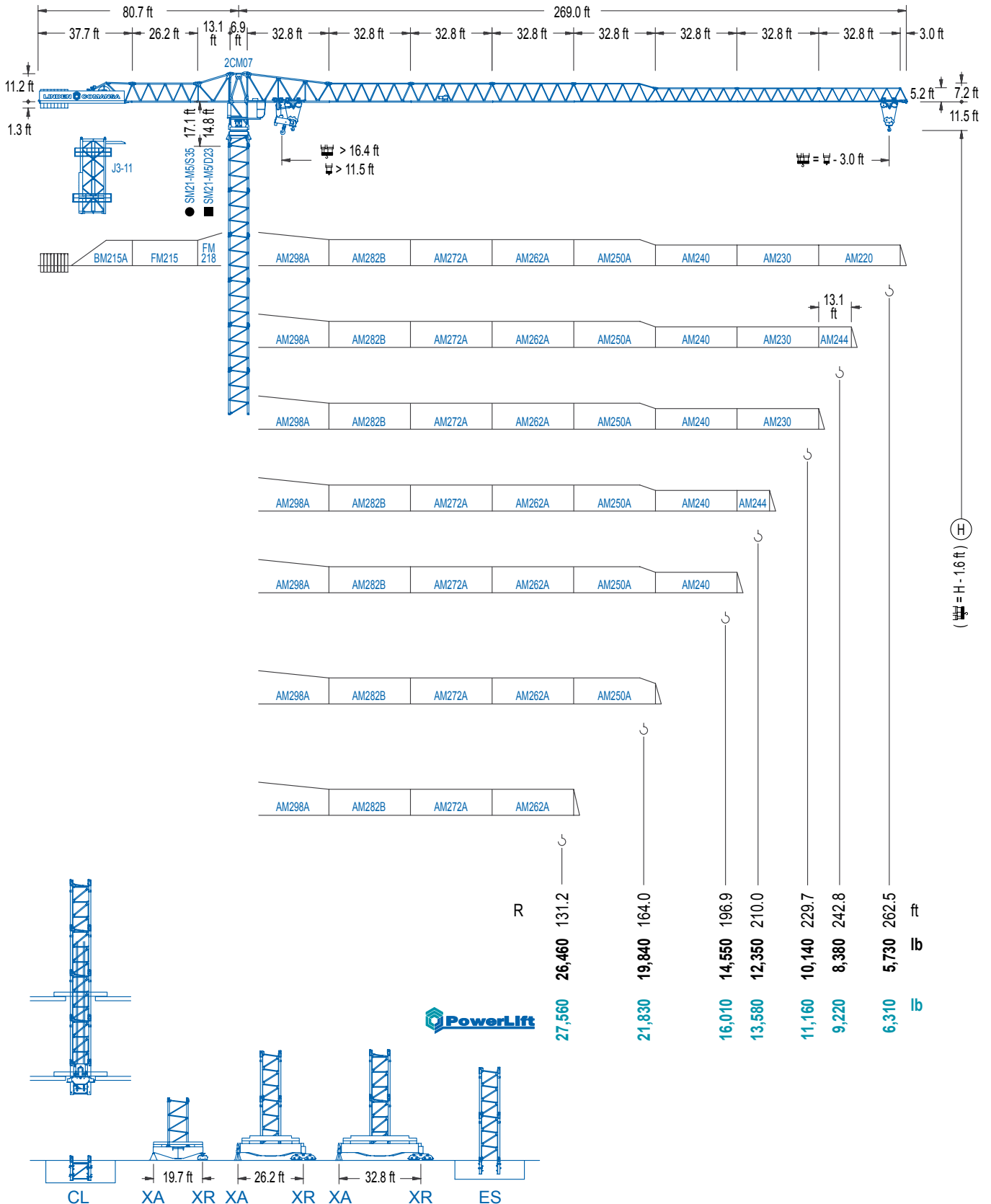


LC 2100

21 LC 450

55,120 lb

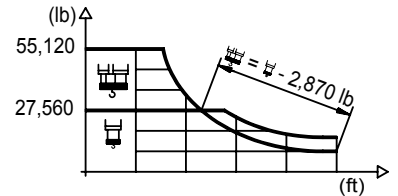


LC 2100

## DIAGRAMA DE CARGAS

Load chart / Diagramme de charges / Lastdiagramm / Diagramma di carico / Диаграмма распределения нагрузки

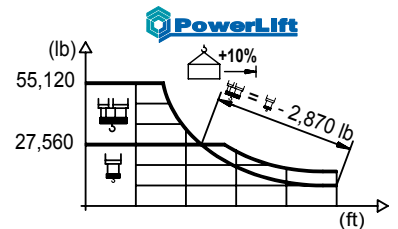
R (ft)	Icon 1					Icon 2															
262.5	36.4	49.2	59.1	64.6	70.9	82.0	91.9	98.4	105.0	114.8	124.7	131.2	147.6	164.0	180.4	196.9	210.0	229.7	242.8	262.5	ft
	55,120	38,450	30,780	27,560	27,560	23,410	20,570	19,030	17,660	15,940	14,480	13,620	11,860	10,450	9,300	8,330	7,690	6,860	6,370	5,730	lb
242.8	44.3	49.2	59.1	65.6	72.2	79.1	87.3	98.4	105.0	114.8	124.7	131.2	147.6	164.0	180.4	196.9	210.0	229.7	242.8	ft	
	55,120	48,790	39,290	34,630	30,860	27,560	27,560	24,100	22,400	20,260	18,450	17,390	15,210	13,450	12,020	10,820	10,010	8,970	8,380	lb	
229.7	48.6	59.1	65.6	72.2	82.0	87.3	96.1	105.0	114.8	124.7	131.2	147.6	164.0	180.4	196.9	210.0	229.7	ft			
	55,120	43,940	38,780	34,610	29,670	27,560	27,560	25,000	22,620	20,640	19,470	17,020	15,080	13,510	12,190	11,290	10,140	lb			
210.0	52.2	59.1	65.6	72.2	82.0	93.5	103.7	105.0	114.8	124.7	131.2	147.6	164.0	180.4	196.9	210.0	ft				
	55,120	47,710	42,150	37,680	32,340	27,560	27,560	27,140	24,560	22,420	21,160	18,540	16,450	14,730	13,320	12,350	lb				
196.9	56.1	65.6	72.2	82.0	91.9	98.4	100.7	111.5	124.7	131.2	147.6	164.0	180.4	196.9	ft						
	55,120	45,900	41,050	35,300	30,820	28,350	27,560	27,560	24,380	23,040	20,190	17,920	16,070	14,550	lb						
164.0	61.0	65.6	72.2	82.0	91.9	98.4	105.0	109.9	122.0	131.2	147.6	164.0	ft								
	55,120	50,570	45,280	39,000	34,130	31,440	29,080	27,560	27,560	25,440	22,310	19,840	lb								
131.2	62.7	72.2	82.0	91.9	98.4	105.0	113.2	126.6	131.2	ft											
	55,120	52,360	44,530	38,580	35,360	32,580	27,560	27,560	26,460	lb											



## DIAGRAMA DE CARGAS POWERLIFT

Load chart PowerLift / Diagramme de charges PowerLift / Lastdiagramm PowerLift / Diagramma di carico PowerLift / Диаграмма распределения нагрузки PowerLift

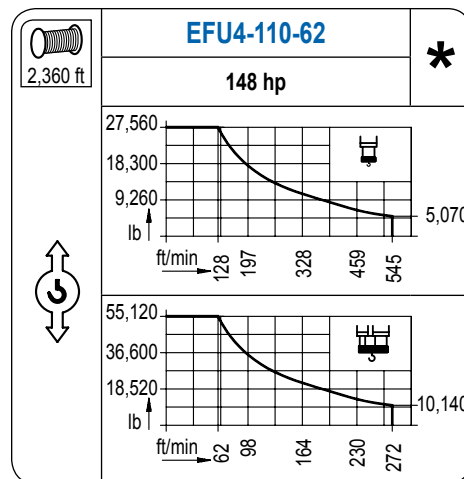
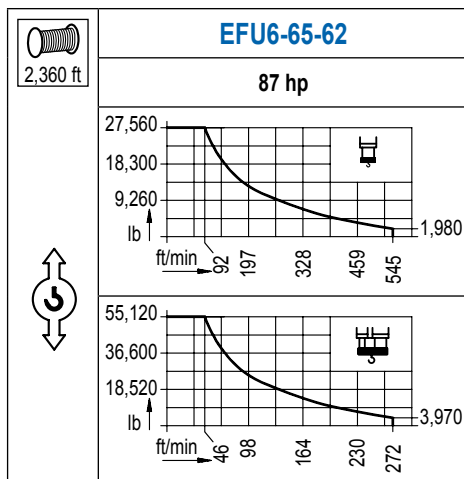
R (ft)	Icon 1					Icon 2															
262.5	39.0	49.2	59.1	69.2	76.1	82.0	91.9	98.4	105.0	114.8	124.7	131.2	147.6	164.0	180.4	196.9	210.0	229.7	242.8	262.5	ft
	55,120	41,670	33,420	27,560	27,560	25,290	22,270	20,590	19,140	17,260	15,700	14,790	12,900	11,380	10,140	9,100	8,400	7,500	6,990	6,310	lb
242.8	47.6	49.2	59.1	65.6	72.2	85.3	94.2	98.4	105.0	114.8	124.7	131.2	147.6	164.0	180.4	196.9	210.0	229.7	242.8	ft	
	55,120	53,130	42,860	37,830	33,750	27,560	27,560	26,210	24,380	22,050	20,110	18,980	16,580	14,700	13,160	11,860	10,980	9,850	9,220	lb	
229.7	52.5	59.1	65.6	72.2	82.0	94.2	104.0	105.0	114.8	124.7	131.2	147.6	164.0	180.4	196.9	210.0	229.7	ft			
	55,120	48,020	42,420	37,920	32,540	27,560	27,560	27,250	24,670	22,510	21,250	18,610	16,510	14,790	13,380	12,410	11,160	lb			
210.0	56.4	65.6	72.2	82.0	91.9	101.4	112.2	114.8	124.7	131.2	147.6	164.0	180.4	196.9	210.0	ft					
	55,120	46,210	41,340	35,540	31,040	27,560	27,560	26,850	24,520	23,150	20,300	18,030	16,180	14,640	13,580	lb					
196.9	60.7	65.6	72.2	82.0	91.9	98.4	108.9	121.1	124.7	131.2	147.6	164.0	180.4	196.9	ft						
	55,120	50,350	45,080	38,820	33,950	31,280	27,560	27,560	26,700	25,220	22,130	19,670	17,680	16,010	lb						
164.0	66.3	72.2	82.0	91.9	98.4	105.0	114.8	119.4	132.9	147.6	164.0	ft									
	55,120	49,850	42,990	37,650	34,720	32,170	28,880	27,560	27,560	24,540	21,830	lb									
131.2	67.6	72.2	82.0	91.9	98.4	105.0	114.8	122.4	131.2	ft											
	55,120	51,170	44,160	38,690	35,690	33,070	29,720	27,560	27,560	27,560	lb										



LC 2100

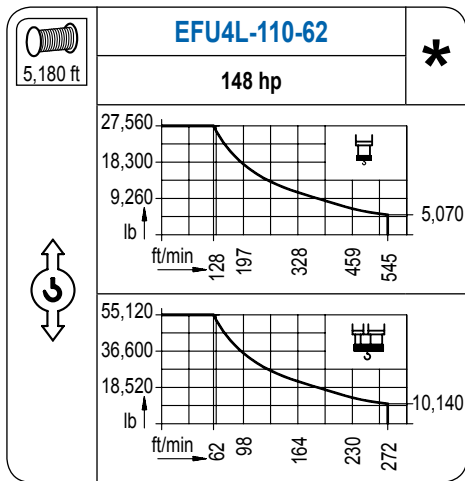
## MECANISMOS

Mechanisms / Mécanismes / Antriebe / Meccanismi / Механизмы

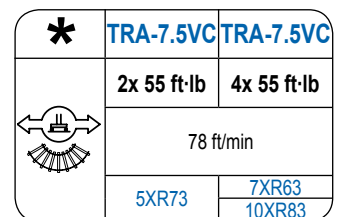
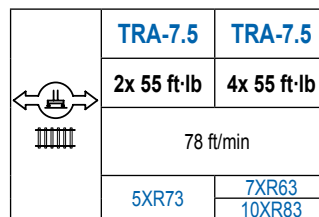
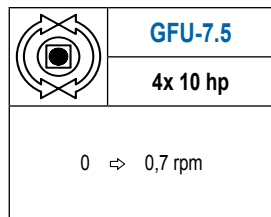
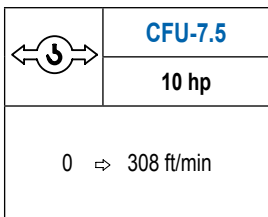


# MECANISMOS

Mechanisms / Mécanismes / Antriebe / Meccanismi / Механизмы



Para mecanismos de alta capacidad de cable consultar cargas. / For mechanisms with high drum capacity, request loads. / Pour des mécanismes avec une grande capacité de câble il faut consulter. / Für Hubmechanismen mit hoher Kabelkapazität, Lastdiagramm anfragen. / Gru con tamburo ad alta capacità di avvolgimento fune, consultare il diagramma di carico. / Проконсультируйтесь о нагрузках при механизмах с большей вместимостью кабеля.



POTENCIA / POWER / PUISSANCE / LEISTUNG / POTENZA / МОЩНОСТЬ				Tensión de alimentación / Operating voltage / Tension de service / Betriebsspannung / Tensione di alimentazione / Напряжение источника питания	Generador / Generator / Générateur / Generator / Generatore / Генератор
Elevación / Hoist / Levage / Hub / Sollevamento / Тип механизма (подъем)	Carro / Trolley / Chariot / Laufkatze / Carrello / Грузовая тележка	Giro / Slewing / Rotation / Drehbewegung / Rotazione / Поворот	Traslación / Travel / Translation / Verfahrbewegung / Traslazione / Ход		
EFU6-65-62	CFU-7.5	(4x) GFU-7.5	(2x) TRA-7.5	480 V	195 kVA
EFU4-110-62			(4x) TRA-7.5	3ph	260 kVA
EFU4L-110-62			(4x) TRA-7.5	60 Hz	260 kVA

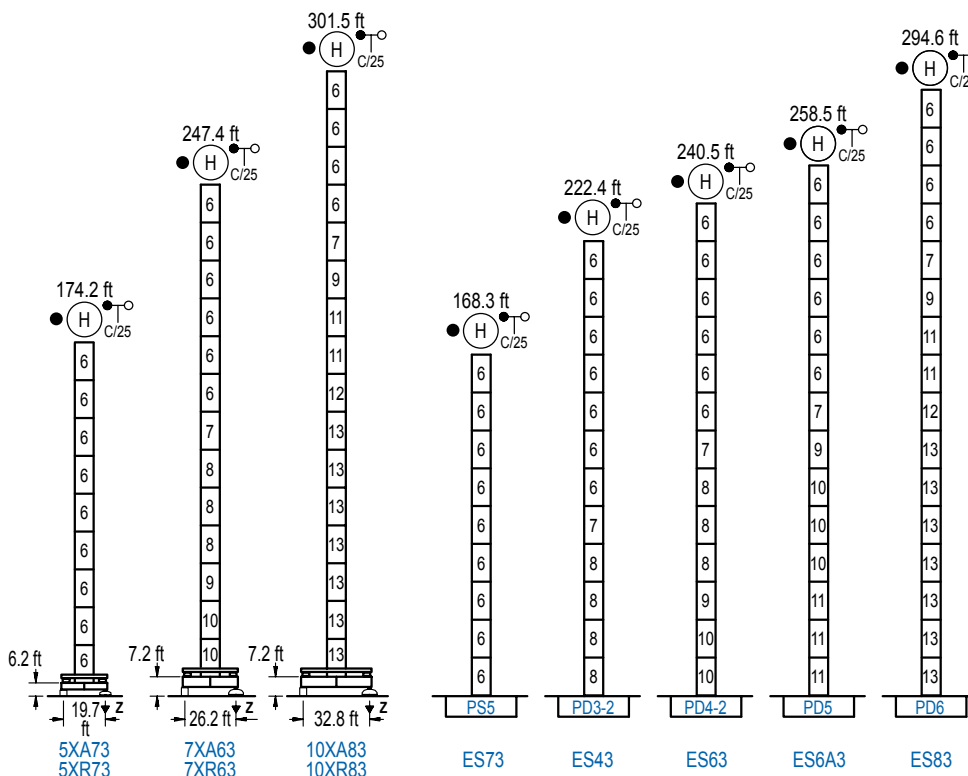
Opcional / Optional / En option / Kaufoption / Opzionale / Опционально

**\***

## ALTURAS BAJO GANCHO

Heights under hook / Hauteurs sous crochet / Hakenhöhen / Altezza sotto gancio / Высота под крюком

∅ 8.2 ft



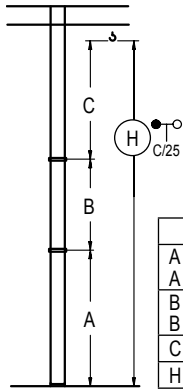
n°	Ref.	∅	h
6	S35	8.2	18.0
7	TD33A	8.2	18.0
8	D33	8.2	18.0
9	TD34	8.2	18.0
10	D34	8.2	18.0
11	D35	8.2	18.0
12	TD36B	8.2	18.0
13	D36	8.2	18.0

Z máx.	En servicio / In operation / En service / In Betrieb / In servizio / При работе	5XR73...267 kip 7XR63...271 kip 10XR83...304 kip
	Fuera de servicio / Out of service / Hors service / Ausser Betrieb / Fuori servizio / В стационарном состоянии	5XR73...225 kip 7XR63...364 kip 10XR83...483 kip

Otras zonas de viento o alturas superiores consultar / Other wind zones or additional hook heights on request / Autres zones de vent ou des hauteurs supplémentaires sur demande / Andere Windzonen oder weitere Hakenhöhen auf Anfrage / Per zone con velocità del vento particolari o altezze superiori consultare il fabbricante / При других ветренных зонах о при большой высоте проконсультируйтесь с нами

## GRÚA ARRIOSTRADA

Braced crane / Grue à entretoisement / Abgespannter Kran / Gru ancorata / Нарастиваемый кран

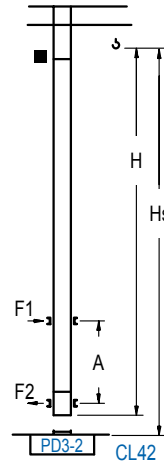


	5XA73	7XA63	10XA83
A max	132.5	205.7	259.8
A min	96.5	115.5	205.7
B max	-	108.3	-
B min	-	72.2	-
C max	149.9	149.9	149.9
H max	282.5	390.7	518.0

	ES73	ES43	ES63	ES6A3	ES83
A max	126.6	180.8	198.8	216.9	253.0
A min	90.6	90.6	108.6	126.6	198.8
B max	-	108.3	-	108.3	-
B min	-	72.2	-	72.2	-
C max	149.9	149.9	149.9	149.9	149.9
H max	276.6	384.8	439.0	475.1	511.2

## GRÚA TREPADORA

Internal climbing crane / Grue avec cage de télescopage intérieure / Kran mit klettern im Gebäude / Gru in rampante in cavedio / Кран с самоподъемом



H	Hs < 1,310 ft	
	A max (ft)	A min (ft)
158.8 ft 4x D23 + 4x D23A + CLD23A-1	64.3	29.5
140.7 ft 3x D23 + 4x D23A + CLD23A-1	55.1	26.2
122.7 ft 2x D23 + 4x D23A + CLD23A-1	46.3	23.0

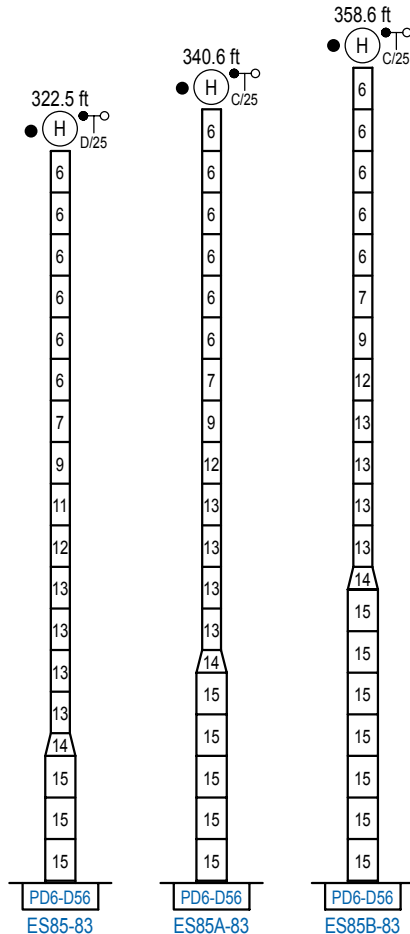
nº	Ref.	∅ (ft)	h (ft)
3	D23	6.6	18.0
4	D23A	6.6	18.0
18	CLD23A-1	6.6	11.2

Otras zonas de viento, alturas superiores, arriostramientos o trepado interno consultar / Other wind zones, additional hook heights, tie frames or internal climbing on request / Autres zones de vent, des hauteurs supplémentaires, entretoisements ou grues avec cage de télescopage intérieure, sur demande / Andere Windzonen, weitere Hakenhöhen, Abspannungen zum Gebäude oder Klettern im Gebäude auf Anfrage / Per zone con velocità del vento particolari, altezze superiori, ancoraggi o rampante in cavedio, consultare il fabbricante / При других ветренных зонах, при большой высоте, привязках к зданию или наращивании крана внутри здания проконсультируйтесь с нами

## ALTURAS ESPECIALES

Special heights / Spéciaux hauteurs / Extra Höhen / Conformazioni raccordate per altezze speciali / Для специальной высоты

∅ 13.1 ft



nº	Ref.	∅ (ft)	h (ft)
6	S35	8.2	18.0
7	TD33A	8.2	18.0
8	D33	8.2	18.0
9	TD34	8.2	18.0
10	D34	8.2	18.0
11	D35	8.2	18.0
12	TD36B	8.2	18.0
13	D36	8.2	18.0
14	TD56D36	13.1	9.8
15	D56	13.1	18.0

Otras zonas de viento o alturas superiores consultar / Other wind zones or additional hook heights on request / Autres zones de vent ou des hauteurs supplémentaires sur demande / Andere Windzonen oder weitere Hakenhöhen auf Anfrage / Per zone con velocità del vento particolari o altezze superiori consultare il fabbricante / При других ветренных зонах о при большой высоте проконсультируйтесь с нами



Construcciones Metálicas COMANSA S. A.

Tel.: (+34) 948 335 020 / Fax: (+34) 948 330 810 / E-mail: info@comansa.com  
Polígono Urbizkain, Ctra. Aoiz nº1 31620, Huarte (Navarra), SPAIN

DS.1548.10.IA 11/16 21 LC 450/55, 120 lb

Reserva de modificaciones. Subject to modifications. Modifications réservées. Konstruktionsänderungen vorbehalten.  
Il fabbricante si riserva la facoltà di apportare modifiche. Возможны изменения.