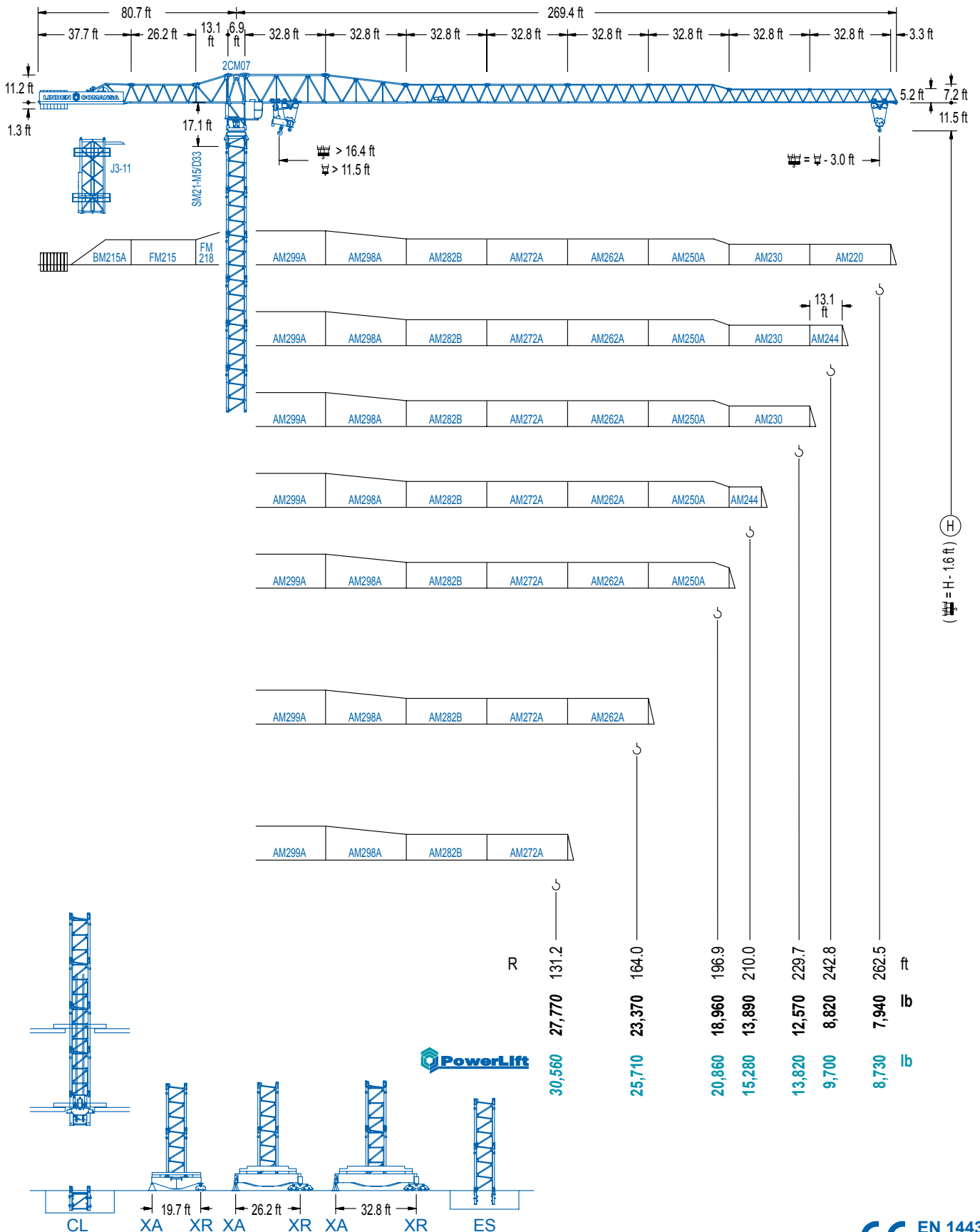


LC 2100

21 LC 550

55,120 lb



LC 2100

DIAGRAMA DE CARGAS

Load chart / Diagramme de charges / Lastdiagramm / Diagramma di carico / Диаграмма распределения нагрузки

R (ft)	Icon 1					Icon 2											
262.5	45.9	59.1	65.6	75.5	82.0	90.2	114.8	131.2	147.6	164.0	180.4	196.9	210.0	229.7	242.8	262.5	ft
	55,120	40,940	36,110	30,510	27,560	27,560	21,050	18,100	15,830	14,000	12,520	11,290	10,450	9,370	8,750	7,940	lb
242.8	46.3	59.1	65.6	75.5	82.3	90.9	114.8	131.2	147.6	164.0	180.4	196.9	210.0	229.7	242.8	ft	
	55,120	41,180	36,310	30,690	27,560	27,560	21,210	18,230	15,940	14,110	12,610	11,380	10,540	9,440	8,820	lb	
229.7	57.7	65.6	75.5	82.0	104.0	114.8	131.2	147.6	164.0	180.4	196.9	210.0	229.7	ft			
	55,120	47,490	40,340	36,550	27,560	27,560	23,770	20,830	18,500	16,600	15,040	13,960	12,570	lb			
210.0	57.4	65.6	75.5	82.0	103.3	114.5	131.2	147.6	164.0	180.4	196.9	210.0	ft				
	55,120	47,220	40,100	36,330	27,560	27,560	23,660	20,750	18,430	16,530	14,970	13,890	lb				
196.9	70.2	75.5	82.0	98.4	126.6	140.4	147.6	164.0	180.4	196.9	ft						
	55,120	50,620	45,990	37,210	27,560	27,560	26,100	23,240	20,900	18,960	lb						
164.0	70.2	75.5	82.0	98.4	127.0	138.1	147.6	164.0	ft								
	55,120	50,730	46,100	37,280	27,560	27,560	26,260	23,370	lb								
131.2	71.5	75.5	82.0	98.4	114.8	128.3	ft										
	55,120	51,810	47,070	38,100	31,770	27,780	lb										

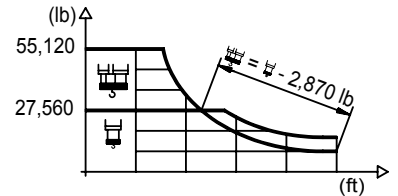
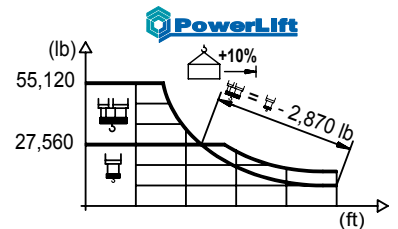


DIAGRAMA DE CARGAS POWERLIFT

Load chart PowerLift / Diagramme de charges PowerLift / Lastdiagramm PowerLift / Diagramma di carico PowerLift / Диаграмма распределения нагрузки PowerLift

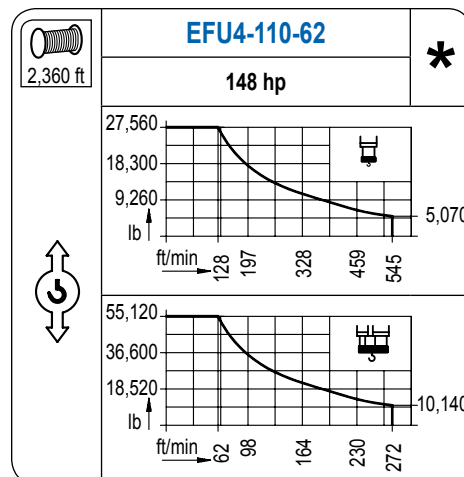
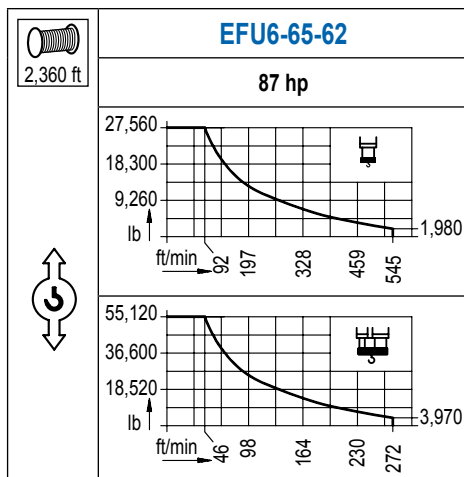
R (ft)	Icon 1					Icon 2											
262.5	49.2	59.1	65.6	75.5	88.3	97.4	114.8	131.2	147.6	164.0	180.4	196.9	210.0	229.7	242.8	262.5	ft
	55,120	44,600	39,370	33,330	27,560	27,560	22,910	19,710	17,240	15,280	13,690	12,350	11,440	10,270	9,610	8,730	lb
242.8	49.5	59.1	65.6	75.5	88.9	98.1	114.8	131.2	147.6	164.0	180.4	196.9	210.0	229.7	242.8	ft	
	55,120	44,930	39,660	33,580	27,560	27,560	23,100	19,890	17,390	15,410	13,800	12,480	11,550	10,380	9,700	lb	
229.7	62.3	75.5	82.0	98.4	112.5	124.3	147.6	164.0	180.4	196.9	210.0	229.7	ft				
	55,120	44,250	40,150	32,360	27,560	27,560	22,800	20,280	18,210	16,490	15,320	13,820	lb				
210.0	62.0	75.5	82.0	98.4	112.2	124.0	147.6	164.0	180.4	196.9	210.0	ft					
	55,120	44,030	39,950	32,210	27,560	27,560	22,730	20,220	18,170	16,450	15,280	lb					
196.9	76.1	82.0	98.4	114.8	137.8	152.9	164.0	180.4	196.9	ft							
	55,120	50,600	41,010	34,260	27,560	27,560	25,510	22,970	20,860	lb							
164.0	76.4	82.0	98.4	114.8	138.5	153.9	164.0	ft									
	55,120	50,790	41,180	34,390	27,560	27,560	25,710	lb									
131.2	77.4	82.0	98.4	114.8	128.3	ft											
	55,120	51,480	41,760	34,880	30,560	lb											



LC 2100

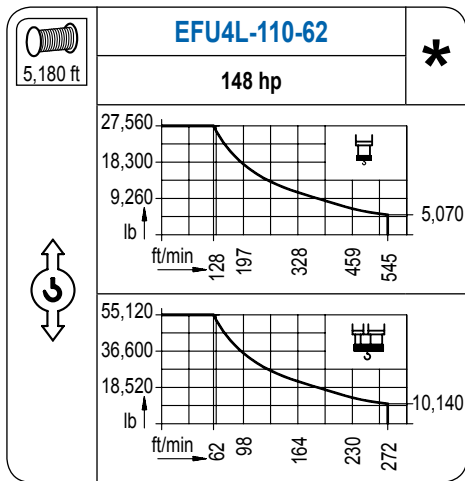
MECANISMOS

Mechanisms / Mécanismes / Antriebe / Meccanismi / Механизмы

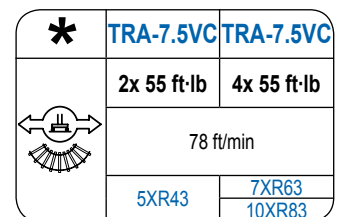
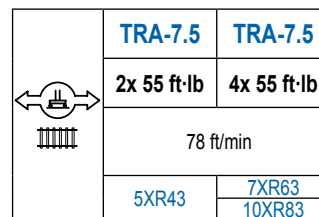
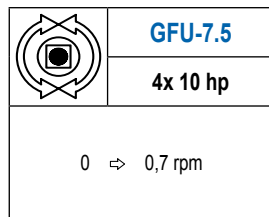
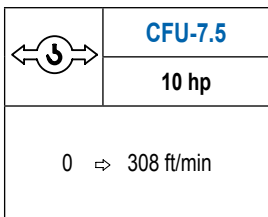


MECANISMOS

Mechanisms / Mécanismes / Antriebe / Meccanismi / Механизмы



Para mecanismos de alta capacidad de cable consultar cargas. / For mechanisms with high drum capacity, request loads. / Pour des mécanismes avec une grande capacité de câble il faut consulter. / Für Hubmechanismen mit hoher Kabelkapazität, Lastdiagramm anfragen. / Gru con tamburo ad alta capacità di avvolgimento fune, consultare il diagramma di carico. / Проконсультируйтесь о нагрузках при механизмах с большей вместимостью кабеля.



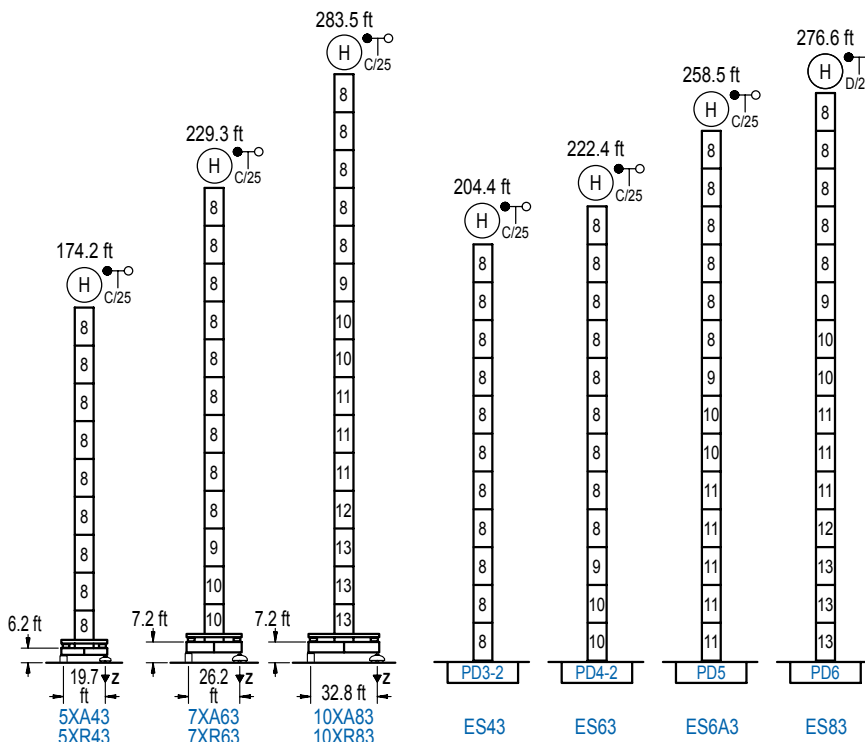
POTENCIA / POWER / PUISSANCE / LEISTUNG / POTENZA / МОЩНОСТЬ				Tensión de alimentación / Operating voltage / Tension de service / Betriebsspannung / Tensione di alimentazione / Напряжение источника питания	Generador / Generator / Générateur / Generator / Generatore / Генератор
Elevación / Hoist / Levage / Hub / Sollevamento / Тип механизма (подъем)	Carro / Trolley / Chariot / Laufkatze / Carrello / Грузовая тележка	Giro / Slewing / Rotation / Drehbewegung / Rotazione / Поворот	Traslación / Travel / Translation / Verfahrbewegung / Traslazione / Ход		
EFU6-65-62	CFU-7.5	(4x) GFU-7.5	(2x) TRA-7.5	480 V	195 kVA
EFU4-110-62			(4x) TRA-7.5	3ph	260 kVA
EFU4L-110-62			(4x) TRA-7.5	60 Hz	260 kVA

Optional / Optional / En option / Kaufoption / Opzionale / Опционально

ALTURAS BAJO GANCHO

Heights under hook / Hauteurs sous crochet / Hakenhöhen / Altezza sotto gancio / Высота под крюком

∅ 8.2 ft



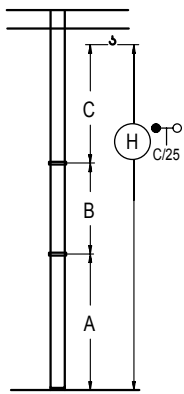
n°	Ref.	∅	h
8	D33	8.2	18.0
9	TD34	8.2	18.0
10	D34	8.2	18.0
11	D35	8.2	18.0
12	TD36B	8.2	18.0
13	D36	8.2	18.0

Z máx.	En servicio / In operation / En service / In Betrieb / In servizio / При работе	5XR43... 300 kip 7XR63... 280 kip 10XR83... 298 kip
	Fuera de servicio / Out of service / Hors service / Ausser Betrieb / Fuori servizio / В стационарном состоянии	5XR43... 225 kip 7XR63... 313 kip 10XR83... 417 kip

Otras zonas de viento o alturas superiores consultar / Other wind zones or additional hook heights on request / Autres zones de vent ou des hauteurs supplémentaires sur demande / Andere Windzonen oder weitere Hakenhöhen auf Anfrage / Per zone con velocità del vento particolari o altezze superiori consultare il fabbricante / При других ветренных зонах о при большой высоте проконсультируйтесь с нами

GRÚA ARRIOSTRADA

Braced crane / Grue à entretoisement / Abgespannter Kran / Gru ancorata / Нарастиваемый кран

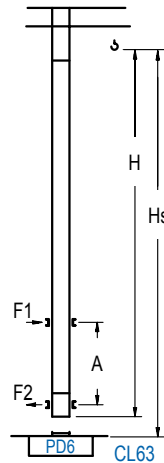


	5XA43	7XA63	10XA83
A max	132.5	187.7	241.8
A min	78.4	79.4	205.7
B max	-	108.3	-
B min	54.1	54.1	108.3
C max	168.0	149.9	149.9
H max	300.5	390.7	337.6

	ES43	ES63	ES6A3	ES83
A max	162.7	180.8	216.9	234.9
A min	72.5	72.5	144.7	198.8
B max	-	108.3	-	108.3
B min	54.1	54.1	54.1	54.1
C max	149.9	149.9	149.9	149.9
H max	312.7	420.9	330.7	439.0

GRÚA TREPADORA

Internal climbing crane / Grue avec cage de télescopage intérieure / Kran mit klettern im Gebäude / Gru in rampante in cavedio / Кран с самоподъемом



H	Hs < 1,310 ft	
	A max (ft)	A min (ft)
203.4 ft 5x D33 + TD34 + 4x D34A + CLD34A	71.9	32.8
185.4 ft 4x D33 + TD34 + 4x D34A + CLD34A	62.7	26.2
167.3 ft 3x D33 + TD34 + 4x D34A + CLD34A	53.8	26.2

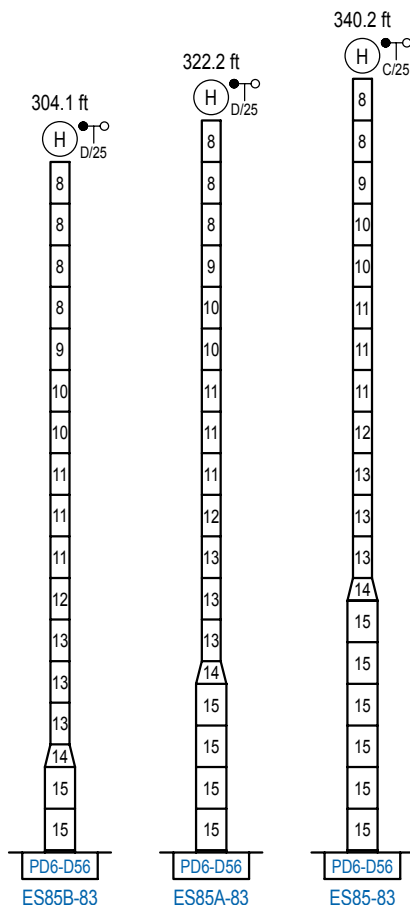
nº	Ref.	h	h
8	D33	8.2	18.0
9	TD34	8.2	18.0
20	D34A	8.2	18.0
21	CLD34A	8.2	12.5

Otras zonas de viento, alturas superiores, arriostramientos o trepado interno consultar / Other wind zones, additional hook heights, tie frames or internal climbing on request / Autres zones de vent, des hauteurs supplémentaires, entretoisements ou grues avec cage de télescopage intérieure, sur demande / Andere Windzonen, weitere Hakenhöhen, Abspannungen zum Gebäude oder Klettern im Gebäude auf Anfrage / Per zone con velocità del vento particolari, altezze superiori, ancoraggi o rampante in cavedio, consultare il fabbricante / При других ветренных зонах, при большой высоте, привязках к зданию или наращивании крана внутри здания проконсультируйтесь с нами

ALTURAS ESPECIALES

Special heights / Spéciaux hauteurs / Extra Höhen / Conformazioni raccordate per altezze speciali / Для специальной высоты

Ø 13.1 ft



nº	Ref.	h	h
8	D33	8.2	18.0
9	TD34	8.2	18.0
10	D34	8.2	18.0
11	D35	8.2	18.0
12	TD36B	8.2	18.0
13	D36	8.2	18.0
14	TD56D36	13.1	9.8
15	D56	13.1	18.0

Otras zonas de viento o alturas superiores consultar / Other wind zones or additional hook heights on request / Autres zones de vent ou des hauteurs supplémentaires sur demande / Andere Windzonen oder weitere Hakenhöhen auf Anfrage / Per zone con velocità del vento particolari o altezze superiori consultare il fabbricante / При других ветренных зонах о при большой высоте проконсультируйтесь с нами



Construcciones Metálicas COMANSA S. A.

Tel.: (+34) 948 335 020 / Fax: (+34) 948 330 810 / E-mail: info@comansa.com
Polígono Urbizkain, Ctra. Aoiz nº1 31620, Huarte (Navarra), SPAIN

DS.1548.12.IA 05/16 21 LC 550/55, 120 lb

Reserva de modificaciones. Subject to modifications. Modifications réservées. Konstruktionsänderungen vorbehalten.
Il fabbricante si riserva la facoltà di apportare modifiche. Возможны изменения.