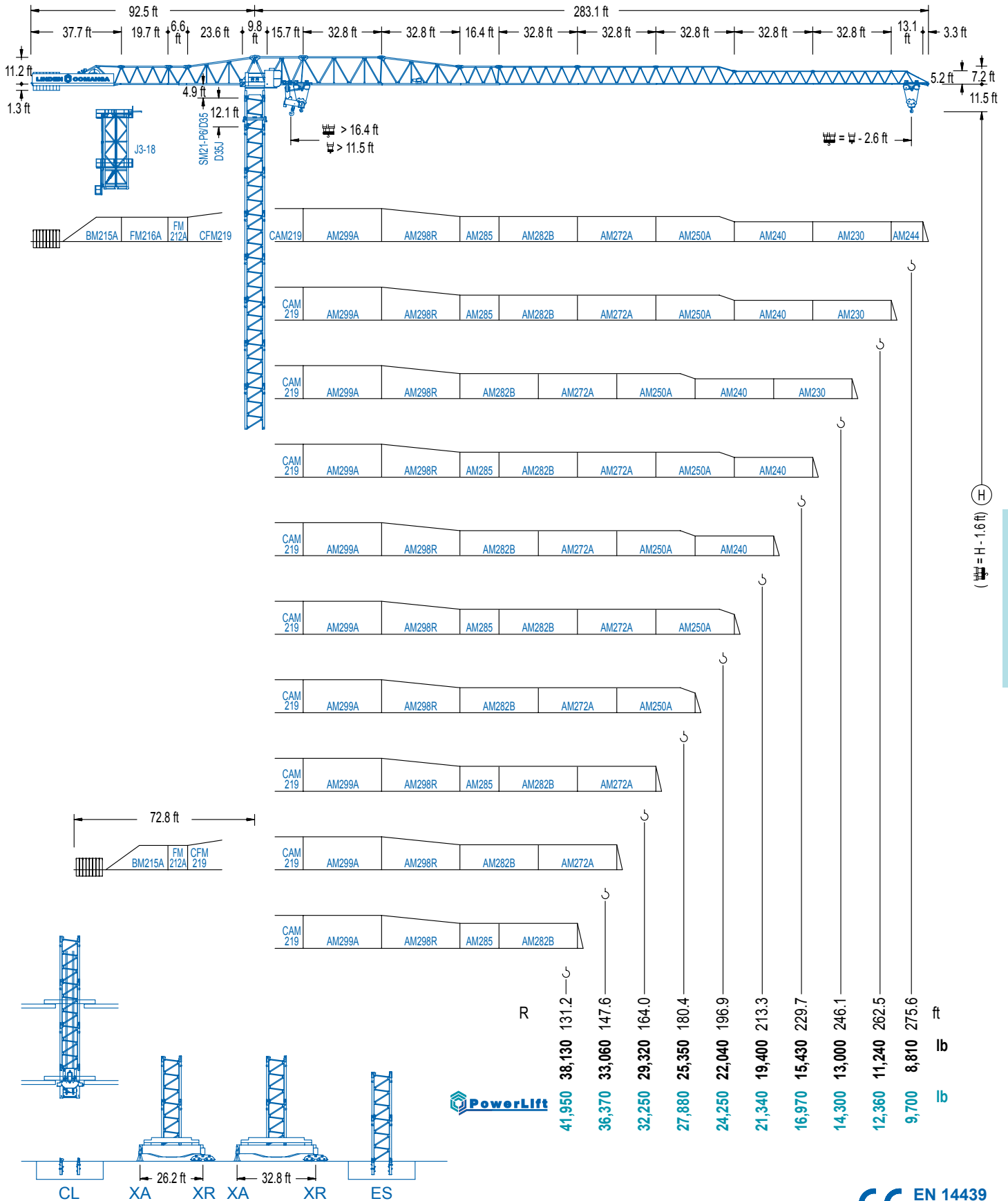


LC 2100

21 LC 660

105,820 lb



LC 2100

DIAGRAMA DE CARGAS

Load chart / Diagramme de charges / Lastdiagramm / Diagramma di carico / Диаграмма распределения нагрузки

R (ft)	🚗			🚚													
275.6	37.7	49.2	65.0	67.6	98.4	114.8	131.2	147.6	164.0	180.4	196.9	213.3	229.7	246.1	262.5	275.6	ft
	105,820	75,610	52,910	52,910	33,950	28,210	23,960	20,700	18,090	16,000	14,240	12,780	11,530	10,440	9,500	8,810	lb
262.5	41.3	49.2	71.9	75.5	98.4	114.8	131.2	147.6	164.0	180.4	196.9	213.3	229.7	246.1	262.5	ft	
	105,820	85,420	52,910	52,910	38,770	32,310	27,530	23,850	20,940	18,560	16,600	14,940	13,530	12,300	11,240	lb	
246.1	42.7	49.2	74.1	78.4	98.4	114.8	131.2	147.6	164.0	180.4	196.9	213.3	229.7	246.1	ft		
	105,820	88,800	52,910	52,910	40,580	33,860	28,880	25,040	22,000	19,530	17,480	15,760	14,280	13,000	lb		
229.7	44.9	78.1	83.0	98.4	114.8	131.2	147.6	164.0	180.4	196.9	213.3	229.7	ft				
	105,820	52,910	52,910	43,360	36,190	30,930	26,850	23,630	21,000	18,820	16,990	15,430	lb				
213.3	48.9	65.6	85.6	91.2	114.8	131.2	147.6	164.0	180.4	196.9	213.3	ft					
	105,820	73,720	52,910	52,910	40,780	34,890	30,370	26,780	23,850	21,420	19,400	lb					
196.9	49.9	65.6	86.9	93.5	114.8	131.2	147.6	164.0	180.4	196.9	ft						
	105,820	75,300	52,910	52,910	41,840	35,820	31,190	27,510	24,510	22,040	lb						
180.4	50.9	65.6	88.9	96.1	114.8	131.2	147.6	164.0	180.4	ft							
	105,820	77,310	52,910	52,910	43,160	36,970	32,200	28,410	25,350	lb							
164.0	51.8	65.6	90.9	98.8	114.8	131.2	147.6	164.0	ft								
	105,820	79,250	52,910	52,910	44,460	38,090	33,200	29,320	lb								
147.6	51.5	65.6	90.2	98.4	114.8	131.2	ft										
	105,820	78,500	52,910	52,910	44,290	37,940	33,060	lb									
131.2	51.5	65.6	90.2	98.8	114.8	131.2	ft										
	105,820	78,430	52,910	52,910	44,510	38,130	lb										

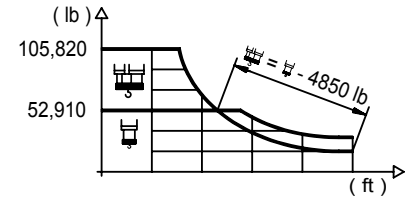
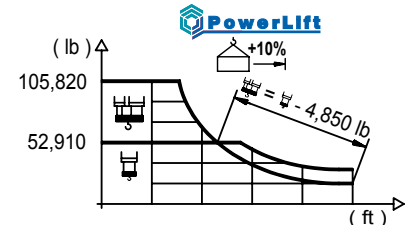


DIAGRAMA DE CARGAS POWERLIFT

Load chart PowerLift / Diagramme de charges PowerLift / Lastdiagramm PowerLift / Diagramma di carico PowerLift / Диаграмма распределения нагрузки PowerLift

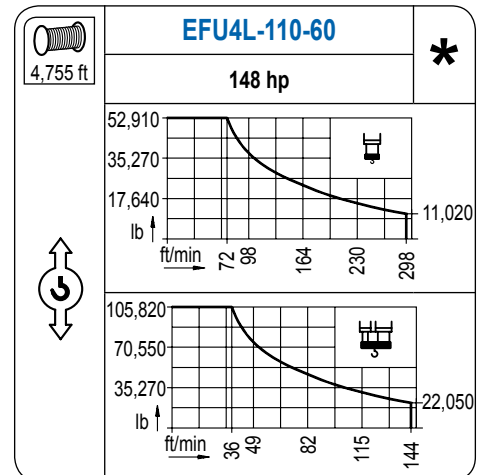
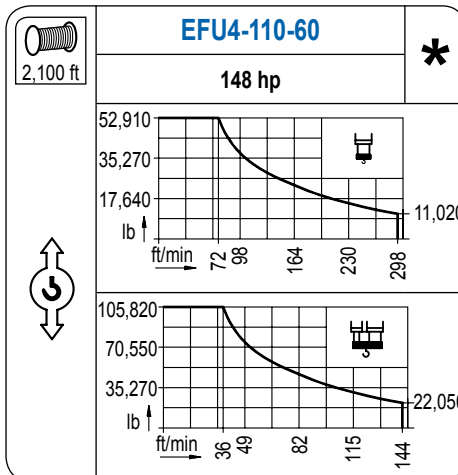
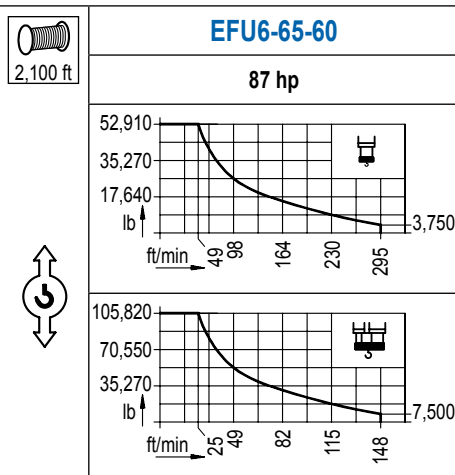
R (ft)	🚗			🚚													
275.6	38.7	49.2	66.6	71.9	98.4	114.8	131.2	147.6	164.0	180.4	196.9	213.3	229.7	246.1	262.5	275.6	ft
	105,820	78,040	52,910	52,910	36,500	30,370	25,850	22,370	19,590	17,350	15,490	13,930	12,580	11,410	10,420	9,700	lb
262.5	43.0	49.2	74.5	80.4	98.4	114.8	131.2	147.6	164.0	180.4	196.9	213.3	229.7	246.1	262.5	ft	
	105,820	89,130	52,910	52,910	41,880	34,960	29,820	25,880	22,750	20,210	18,120	16,330	14,810	13,510	12,360	lb	
246.1	44.3	49.2	77.4	84.0	98.4	114.8	131.2	147.6	164.0	180.4	196.9	213.3	229.7	246.1	ft		
	105,820	93,210	52,910	52,910	43,930	36,700	31,340	27,240	23,960	21,310	19,110	17,260	15,670	14,300	lb		
229.7	46.9	49.2	81.7	88.9	114.8	131.2	147.6	164.0	180.4	196.9	213.3	229.7	ft				
	105,820	99,530	69,750	52,910	52,910	39,370	33,660	29,270	25,810	22,970	20,630	18,650	16,970	lb			
213.3	51.5	65.6	90.2	98.8	114.8	131.2	147.6	164.0	180.4	196.9	213.3	ft					
	105,820	78,680	52,910	52,910	44,440	38,090	33,200	29,320	26,160	23,540	21,340	lb					
196.9	52.5	65.6	92.2	101.0	114.8	131.2	147.6	164.0	180.4	196.9	ft						
	105,820	80,660	52,910	52,910	45,670	39,170	34,140	30,150	26,940	24,250	lb						
180.4	53.8	65.6	94.5	104.0	131.2	147.6	164.0	180.4	ft								
	105,820	83,150	63,240	52,910	52,910	40,490	35,310	31,210	27,880	lb							
164.0	55.1	65.6	96.8	107.0	131.2	147.6	164.0	ft									
	105,820	85,560	65,120	52,910	52,910	41,790	36,460	32,250	lb								
147.6	54.8	65.6	96.5	106.6	131.2	147.6	ft										
	105,820	85,030	64,700	52,910	52,910	41,680	36,370	lb									
131.2	54.8	65.6	96.5	107.3	131.2	ft											
	105,820	85,220	64,850	52,910	52,910	41,950	lb										



LC 2100

MECANISMOS

Mechanisms / Mécanismes / Antriebe / Meccanismi / Механизмы



MECANISMOS

Mechanisms / Mécanismes / Antriebe / Meccanismi / Механизмы

	CFU-13
	10 hp
0 ⇔ 246 ft/m/min	

	GFU-7.5
	4x 10 hp
0 ⇔ 0,7 rpm	

	TRA-7.5
	4x 55 ft-lb
	78 ft/min
7XR6A3	10XR83

	TRA-7.5VC
	4x 55 ft-lb
	78 ft/min
7XR6A3	10XR83

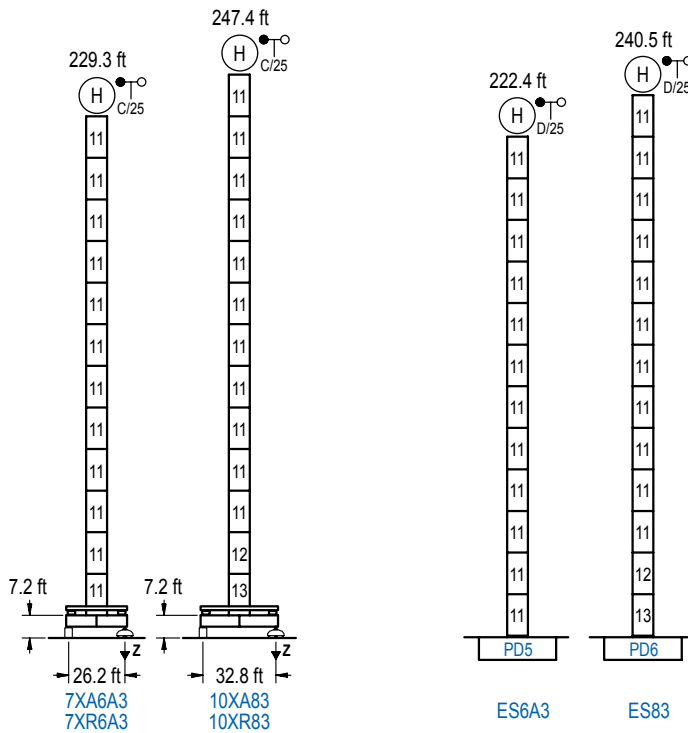
POTENCIA / POWER / PUISSANCE / LEISTUNG / POTENZA / МОЩНОСТЬ				Tensión de alimentación / Operating voltage / Tension de service / Betriebsspannung / Tensione di alimentazione / Напряжение источника питания	Generador / Generator / Générateur / Generator / Generatore / Генератор
Elevación / Hoist / Levage / Hub / Sollevamento / Тип механизма (подъем)	Carro / Trolley / Chariot / Laufkatze / Carrolo / Грузовая тележка	Giro / Slewing / Rotation / Drehbewegung / Rotazione / Поворот	Traslación / Travel / Translation / Verfahrbewegung / Traslazione / Ход	480 V 3ph 60 Hz	205 kVA 270 kVA 270 kVA
EFU6-65-60	CFU-13	(4x) GFU-7.5	(4x) TRA-7.5		205 kVA
EFU4-110-60					270 kVA
EFU4L-110-60					270 kVA

Opcional / Optional / En option / Kaufoption / Opzionale / Опционально
*

ALTURAS BAJO GANCHO

Heights under hook / Hauteurs sous crochet / Hakenhöhen / Altezza sotto gancio / Высота под крюком

∅ 8.2 ft



n°	Ref.	∅	h
11	D35	8.2	18.0
12	TD36B	8.2	18.0
13	D36	8.2	18.0

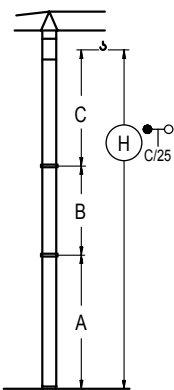
Z máx.	En servicio / In operation / En service / In Betrieb / In servizio / При работе	7XR6A3 .344 kip 10XR83..322 kip
	Fuera de servicio / Out of service / Hors service / Ausser Betrieb / Fuori servizio / В стационарном состоянии	7XR6A3 .351 kip 10XR83..346 kip

GRÚA ARRIOSTRADA

Braced crane / Grue à entretoisement / Abgespannter Kran / Gru ancorata / Нарастиваемый кран

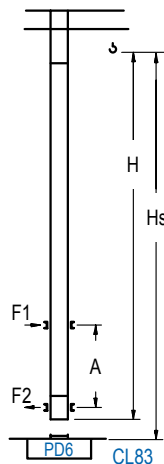
GRÚA TREPADORA

Internal climbing crane / Grue avec cage de télescopage intérieure / Kran mit klettern im Gebäude / Gru in rampante in cavedio / Кран с самоподъемом



	7XA6A3	10XA83
A max	187.7 79.4	205.7 97.4
B max	- 126.3 54.1	- 126.3 54.1
C max	168.0 168.0	168.0 168.0
H max	355.6 482.0	373.7 500.0

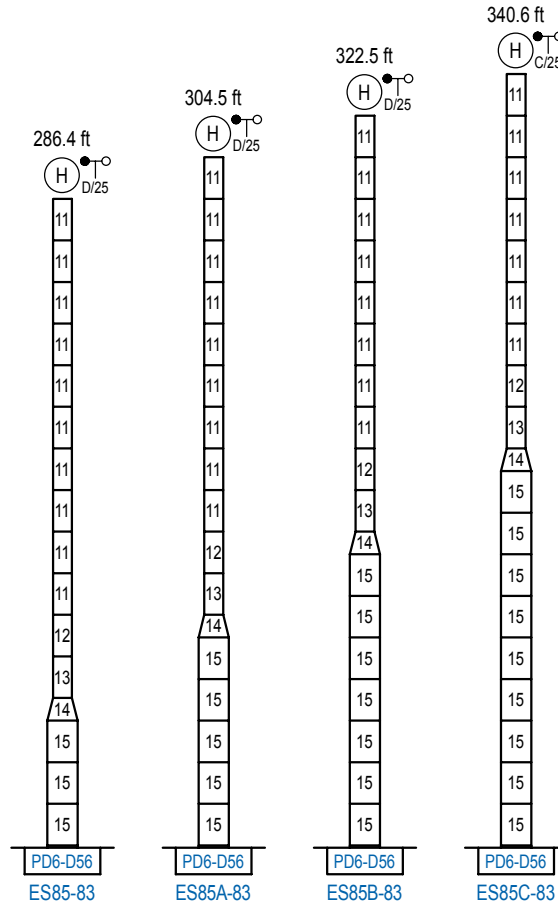
	ES6A3	ES83
A max	180.8 72.5	198.8 90.2
B max	- 126.3 54.1	- 126.3 54.1
C max	168.0 168.0	168.0 168.0
H max	348.8 475.1	366.8 493.1



H	Hs < 1,310 ft	
	A max (ft)	A min (ft)
198.5 ft 5x D35 + TD36B + 4x D36A + CLD36	71.9	26.2
180.4 ft 4x D35 + TD36B + 4x D36A + CLD36	62.7	26.2
162.4 ft 3x D35 + TD36B + 4x D36A + CLD36	53.8	26.2

n°	Ref.	∅	h
11	D35	8.2	18.0
12	TD36B	8.2	18.0
22	D36A	8.2	18.0
19	CLD36	8.2	12.5

Otras zonas de viento, alturas superiores, arriostramientos o trepado interno consultar / Other wind zones, additional hook heights, tie frames or internal climbing on request / Autres zones de vent, des hauteurs supplémentaires, entretoisements ou grues avec cage de télescopage intérieure, sur demande / Andere Windzonen, weitere Hakenhöhen, Abspannungen zum Gebäude oder Klettern im Gebäude auf Anfrage / Per zone con velocità del vento particolari, altezze superiori, ancoraggi o rampante in cavedio, consultare il fabbricante / При других ветренных зонах, при большой высоте, привязках к зданию или наращивании крана внутри здания проконсультируйтесь с нами



	n°	Ref.	∅	h	n°	Ref.	∅	h
		11	D35	8.2	18.0	14	TD56D36	13.1
	12	TD36B	8.2	18.0	15	D56	13.1	18.0
	13	D36	8.2	18.0				

Otras zonas de viento o alturas superiores consultar / Other wind zones or additional hook heights on request / Autres zones de vent ou des hauteurs supplémentaires sur demande / Andere Windzonen oder weitere Hakenhöhen auf Anfrage / Per zone con velocità del vento particolari o altezze superiori consultare il fabbricante / При других ветренных зонах о при большой высоте проконсультируйтесь с нами