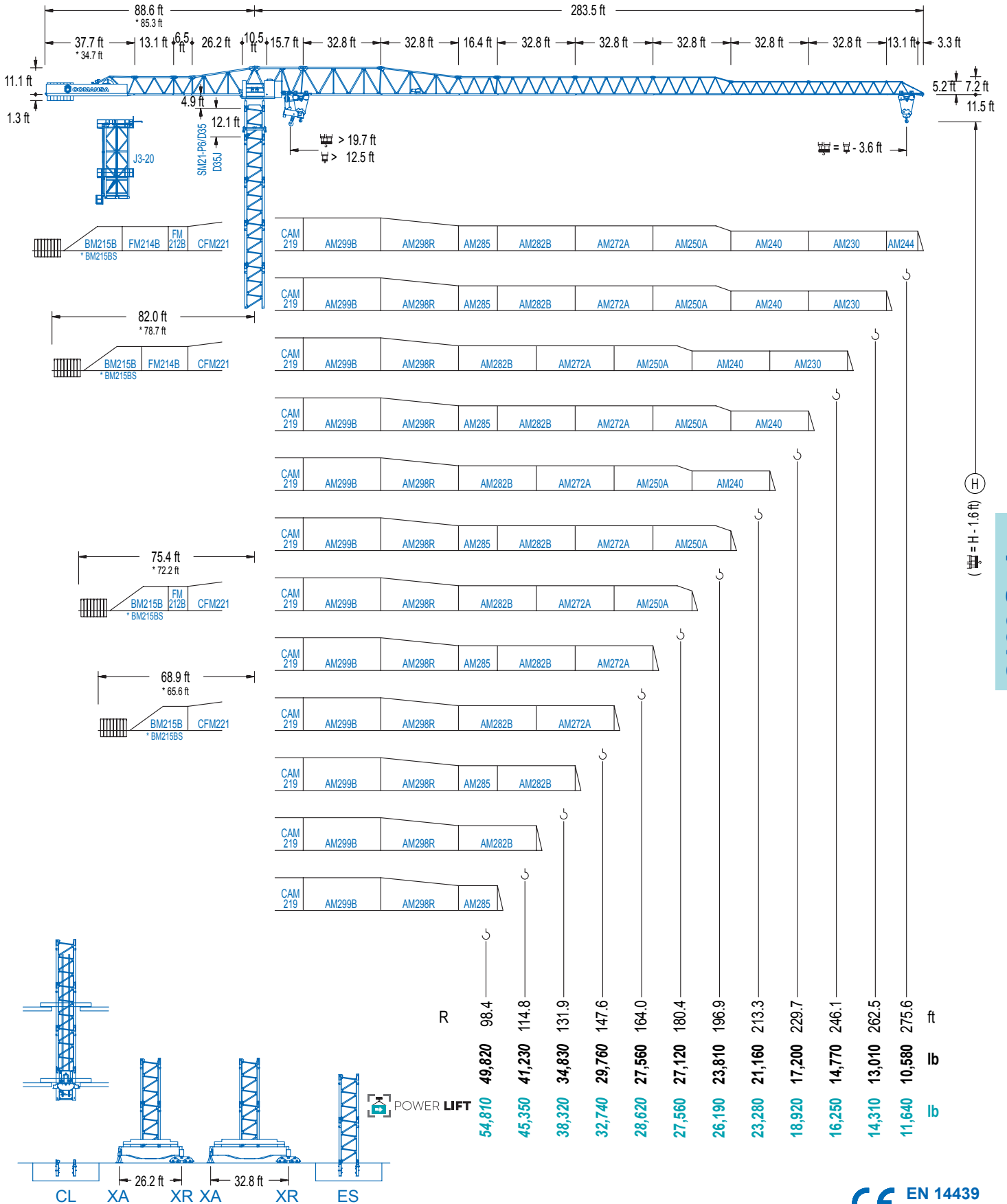


2100 Series

21 LC 660

82,670 lb



2100 Series

DIAGRAMA DE CARGAS

Load chart / Diagramme de charges / Lastdiagramm / Diagramma di carico / Диаграмма распределения нагрузки

R (ft)	2,360 ft						2,360 ft											
275.6	43.3 82,670	49.2 70,500	65.6 49,360	75.5 41,420	82.0 37,260	103.3 27,560	122.0 27,560	131.2 25,400	147.6 22,200	164.0 19,670	180.4 17,610	196.9 15,900	213.3 14,460	229.7 13,230	246.1 12,170	262.5 11,240	275.6 10,580	ft lb
262.5		48.2 82,670	65.6 56,750	75.5 47,770	82.0 43,060	98.4 35,980	116.1 27,560	137.5 27,560	147.6 25,400	164.0 22,530	180.4 20,190	196.9 18,280	213.3 16,640	229.7 15,260	246.1 14,070	262.5 13,010	ft lb	
246.1		50.2 82,670	65.6 59,500	75.5 50,130	82.0 45,240	98.4 35,980	120.7 27,560	143.0 27,560	147.6 26,610	164.0 23,610	180.4 21,190	196.9 19,180	213.3 17,460	229.7 16,030	246.1 14,770	ft lb		
229.7		52.8 82,670	65.6 63,730	75.5 53,770	82.0 48,550	98.4 38,710	114.8 30,620	128.3 27,560	151.9 27,560	164.0 25,260	180.4 22,690	196.9 20,550	213.3 18,740	229.7 17,200	ft lb			
213.3			58.4 82,670	75.5 60,760	82.0 54,940	98.4 43,980	114.8 36,290	131.2 30,620	142.4 27,560	169.0 27,560	180.4 25,570	196.9 23,170	213.3 21,160	ft lb				
196.9			59.7 82,670	75.5 62,350	82.0 56,390	98.4 45,170	114.8 37,320	131.2 31,500	145.3 27,560	172.9 27,560	180.4 26,260	196.9 23,810	ft lb					
180.4			61.0 82,670	75.5 64,330	82.0 58,200	98.4 46,670	114.8 38,580	131.2 32,610	149.3 27,560	177.5 27,560	180.4 27,120	ft lb						
164.0			62.7 82,670	75.5 66,200	82.0 59,920	98.4 48,080	114.8 39,790	131.2 33,660	153.2 27,560	164.0 27,560	ft lb							
147.6			62.3 82,670	75.5 65,810	82.0 59,550	98.4 47,800	114.8 39,530	131.2 33,420	143.7 29,760	ft lb								
131.2			62.3 82,670	75.5 65,960	82.0 59,700	98.4 47,880	114.8 39,640	127.3 34,830	ft lb									
114.8			62.3 82,670	75.5 65,720	82.0 59,480	98.4 47,730	110.9 41,230	ft lb										
98.4			62.0 82,670	75.5 65,300	82.0 59,110	94.5 49,820	ft lb											

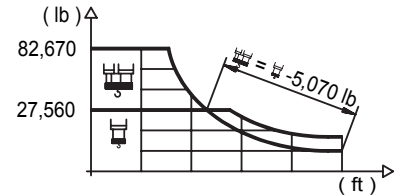
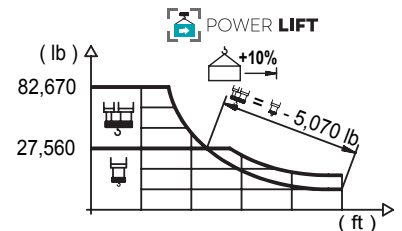


DIAGRAMA DE CARGAS POWERLIFT

Load chart PowerLift / Diagramme de charges PowerLift / Lastdiagramm PowerLift / Diagramma di carico PowerLift / Диаграмма распределения нагрузки PowerLift

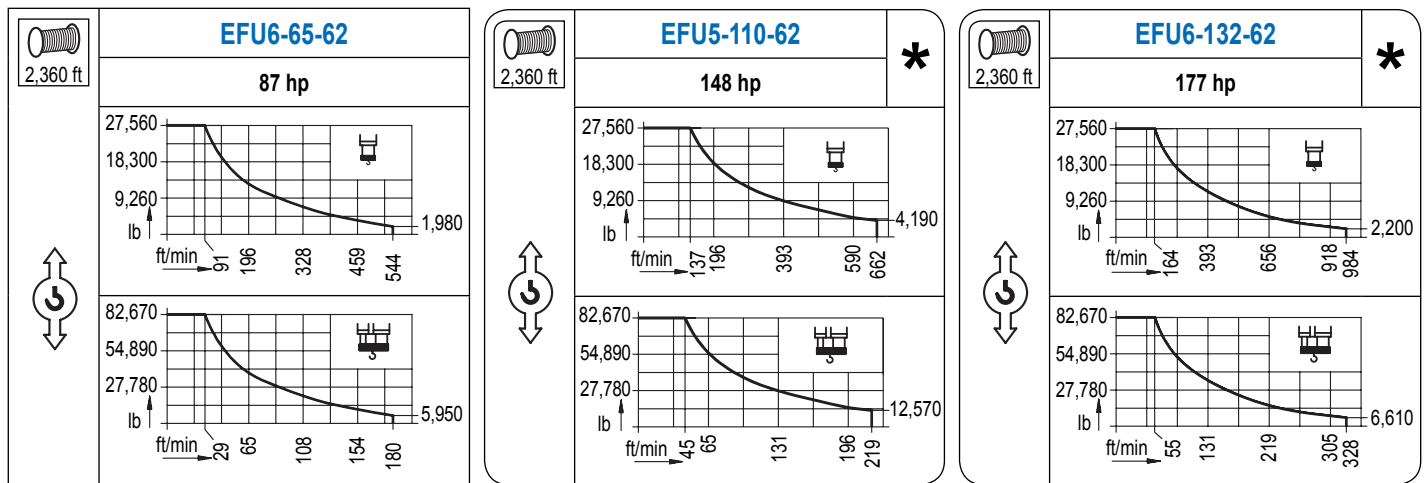
R (ft)	2,360 ft						2,360 ft											
275.6	46.3 82,670	59.1 61,180	65.6 53,730	75.5 45,170	82.0 40,700	98.4 32,230	110.9 27,560	131.9 27,560	147.6 24,210	164.0 21,470	180.4 19,250	196.9 17,390	213.3 15,830	229.7 14,510	246.1 13,360	262.5 12,350	275.6 11,640	ft lb
262.5		51.8 82,670	59.1 70,660	65.6 62,190	75.5 52,450	82.0 47,350	98.4 37,720	114.8 30,970	125.7 27,560	148.6 25,600	164.0 24,630	180.4 22,110	196.9 20,020	213.3 18,250	229.7 16,750	246.1 15,430	262.5 14,310	ft lb
246.1		53.8 82,670	59.1 74,140	65.6 65,300	75.5 55,120	82.0 49,780	98.4 39,730	114.8 32,690	130.9 27,560	154.9 27,560	164.0 25,860	180.4 23,210	196.9 21,030	213.3 19,180	229.7 17,610	246.1 16,250	ft lb	
229.7		57.1 82,670	65.6 70,000	75.5 59,170	82.0 53,480	98.4 42,790	114.8 35,270	131.2 29,740	138.5 27,560	164.7 27,560	180.4 24,890	196.9 22,550	213.3 20,590	229.7 18,920	ft lb			
213.3			63.3 82,670	75.5 66,910	82.0 60,560	98.4 48,610	114.8 40,230	131.2 34,040	147.6 29,280	154.5 27,560	183.4 27,560	196.9 25,490	213.3 23,280	ft lb				
196.9			64.6 82,670	75.5 68,700	82.0 62,210	98.4 49,980	114.8 41,400	131.2 35,050	147.6 30,160	158.1 27,560	188.0 27,560	196.9 26,190	ft lb					
180.4			65.3 82,670	75.5 69,690	82.0 63,120	98.4 50,710	114.8 42,020	131.2 35,600	147.6 30,640	160.1 27,560	180.4 27,560	ft lb						
164.0			67.3 82,670	75.5 71,940	82.0 65,170	98.4 52,400	114.8 43,470	131.2 36,860	147.6 31,770	160.1 28,620	ft lb							
147.6			66.9 82,670	75.5 71,670	82.0 64,930	98.4 52,200	114.8 43,300	131.2 36,710	143.7 32,740	ft lb								
131.2			67.3 82,670	75.5 72,000	82.0 65,230	98.4 52,450	114.8 43,520	127.3 38,320	ft lb									
114.8			66.9 82,670	75.5 71,910	82.0 65,150	98.4 52,400	110.9 45,350	ft lb										
98.4			66.9 82,670	75.5 71,630	82.0 64,900	94.5 54,810	ft lb											



Datos válidos hasta 328 ft de ABG. Para alturas mayores consultar / Valid data up to 328 ft HUH. Additional heights on request / Données valables jusqu'à 328 ft HSC. Pour des autres hauteurs, merci de nous consulter / Gültige Daten bis zu 328 ft HH. Bei höheren Hakenhöhen nachfragen / Dati validi fino a 328 ft ASG. Per altezze superiori consultare Comansa / Допустимые данные до 328 фут ВПК. Для более высоких высот консультируйтесь

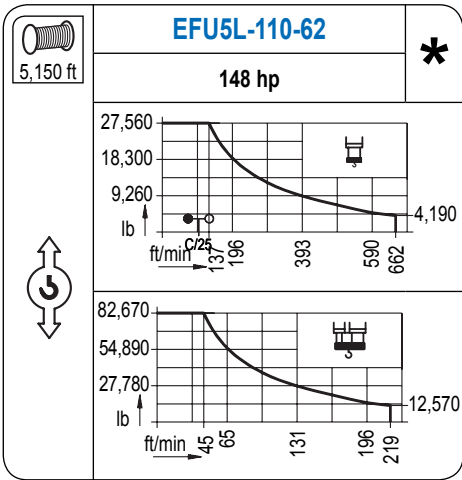
MECANISMOS

Mechanisms / Mécanismes / Antriebe / Meccanismi / Механизмы

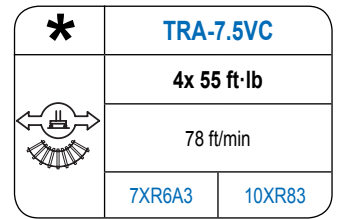
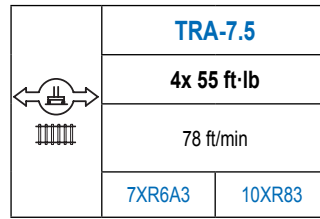
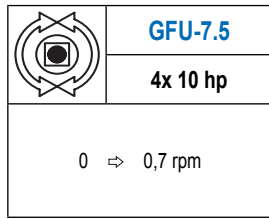
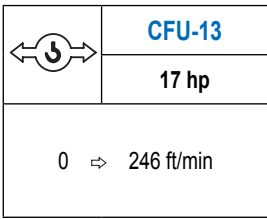
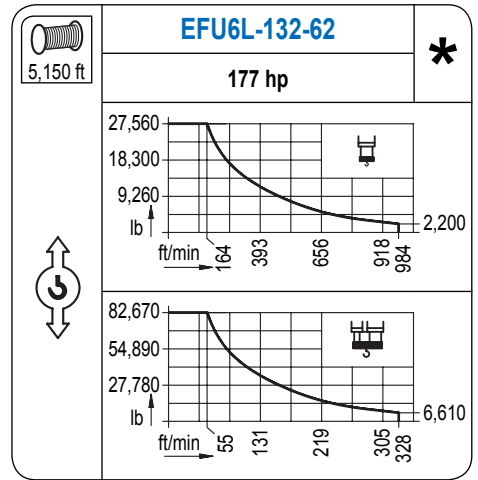


MECANISMOS

Mechanisms / Mécanismes / Antriebe / Meccanismi / Механизмы



Para mecanismos de alta capacidad de cable consultar cargas. / For mechanisms with high drum capacity, request loads. / Pour des mécanismes avec une grande capacité de câble il faut consulter. / Für Hubmechanismen mit hoher Kabelkapazität, Lastdiagramm anfragen. / Gru con tamburo ad alta capacità di avvolgimento fune, consultare il diagramma di carico. / Проконсультируйтесь о нагрузках при механизмах с большей вместимостью кабеля.



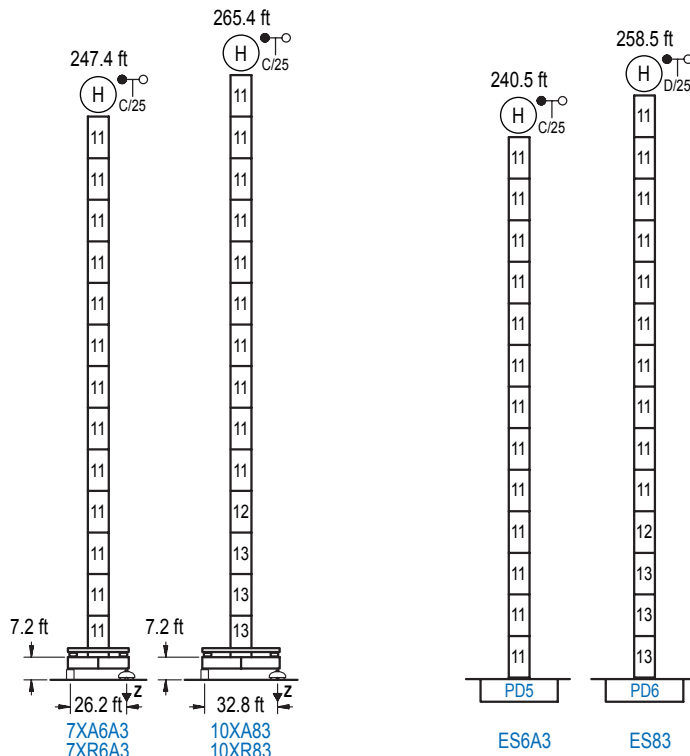
Elevación / Hoist / Levage / Hub / Sollevamento / Тип механизма (подъем)	Carro / Trolley / Chariot / Laufkatze / Carrelo / Грузовая тележка	Giro / Slewing / Rotation / Drehbewegung / Rotazione / Поворот	Traslación / Travel / Translation / Verfahrbewegung / Traslazione / Ход	Tensión de alimentación / Operating voltage / Tension de service / Betriebsspannung / Tensione di alimentazione / Напряжение источника питания	Potencia requerida / Required power / Puissance requise / Benötigte Leistung / Potenza richiesta / требуемая мощность
EFU6-65-62	CFU-13	(4x) GFU-7.5	(4x) TRA-7.5	480 V 3ph 60 Hz	99 kVA
EFU5-110-62					144 kVA
EFU5L-110-62					144 kVA
EFU6-132-62					166 kVA
EFU6L-132-62					166 kVA

Optional / Optional / En option / Kaufoption / Opzionale / Опционально

ALTURAS BAJO GANCHO

Heights under hook / Hauteurs sous crochet / Hakenhöhen / Altezza sotto gancio / Высота под крюком

∅ 8.2 ft



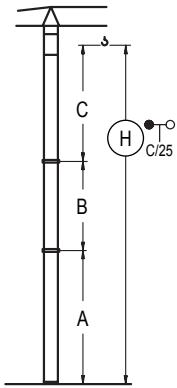
n°	Ref.	∅	h
11	D35	8.2	18.0
12	TD36B	8.2	18.0
13	D36B	8.2	18.0

Z máx.	En servicio / In operation / En service / In Betrieb / In servizio / При работе	7XR6A3 ...365 kip 10XR83 ...304 kip
	Fuera de servicio / Out of service / Hors service / Ausser Betrieb / Fuori servizio / В стационарном состоянии	7XR6A3 ...427 kip 10XR83 ...405 kip

Otras zonas de viento o alturas superiores consultar / Other wind zones or additional hook heights on request / Autres zones de vent ou des hauteurs supplémentaires sur demande / Andere Windzonen oder weitere Hakenhöhen auf Anfrage / Per zone con velocità del vento particolari o altezze superiori consultare il fabbricante / При других ветренных зонах or при большой высоте проконсультируйтесь с нами

GRÚA ARRIOSTRADA

Braced crane / Grue à entretoisement / Abgespannter Kran / Gru ancorata / Нарастиваемый кран

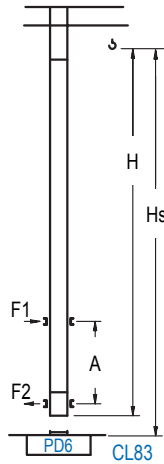


	7XA6A3		10XA83	
A max	205.7		223.8	
A min	79.4		97.4	
B max	-	126.3	-	126.3
B min	-	54.1	-	54.1
C max	168.0	168.0	168.0	168.0
H max	373.7	500.0	391.7	518.0

	ES6A3		ES83	
A max	198.8		216.9	
A min	72.5		90.2	
B max	-	126.3	-	126.3
B min	-	54.1	-	54.1
C max	168.0	168.0	168.0	168.0
H max	366.8	493.1	384.8	511.2

GRÚA TREPADORA

Internal climbing crane / Grue avec cage de télescopage intérieure / Kran mit klettern im Gebäude / Gru in rampante in cavedio / Кран с самоподъемом



H	Hs < 1,310 ft	
	A max (ft)	A min (ft)
198.5 ft 5x D35 + TD36B + 4x D36A + CLD36A-28	71.9	26.2
180.4 ft 4x D35 + TD36B + 4x D36A + CLD36A-28	62.7	26.2
162.4 ft 3x D35 + TD36B + 4x D36A + CLD36A-28	53.8	26.2

n°	Ref.	h	h (ft)
11	D35	8.2	18.0
12	TD36B	8.2	18.0
22	D36A	8.2	18.0
19	CLD36A-28	8.2	12.5

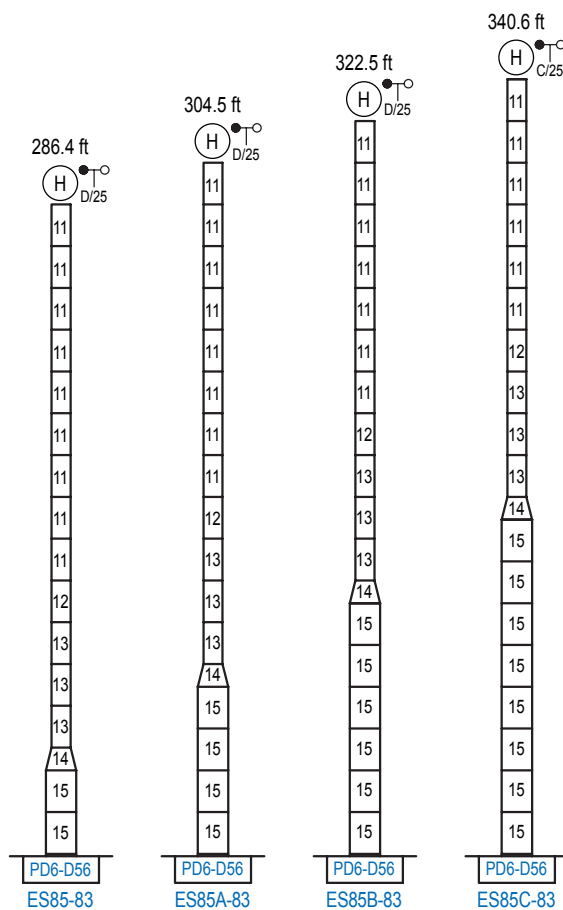
Otras zonas de viento, alturas superiores, arriostramientos o trepado interno consultar / Other wind zones, additional hook heights, tie frames or internal climbing on request / Autres zones de vent, des hauteurs supplémentaires, entretoisements ou grues avec cage de télescopage intérieure, sur demande / Andere Windzonen, weitere Hakenhöhen, Abspannungen zum Gebäude oder Klettern im Gebäude auf Anfrage / Per zone con velocità del vento particolari, altezze superiori, ancoraggi o rampante in cavedio, consultare il fabbricante / При других ветренных зонах, при большой высоте, привязках к зданию или наращивании крана внутри здания проконсультируйтесь с нами

ALTURAS ESPECIALES

Special heights / Spéciaux hauteurs / Extra Höhen / Conformazioni raccordate per altezze speciali / Для специальной высоты

13.1 ft

2100 Series



n°	Ref.	h	h (ft)
11	D35	8.2	18.0
12	TD36B	8.2	18.0
13	D36B	8.2	18.0
14	TD56D36	13.1	9.8
15	D56	13.1	18.0

Otras zonas de viento o alturas superiores consultar / Other wind zones or additional hook heights on request / Autres zones de vent ou des hauteurs supplémentaires sur demande / Andere Windzonen oder weitere Hakenhöhen auf Anfrage / Per zone con velocità del vento particolari o altezze superiori consultare il fabbricante / При других ветренных зонах или при большой высоте проконсультируйтесь с нами