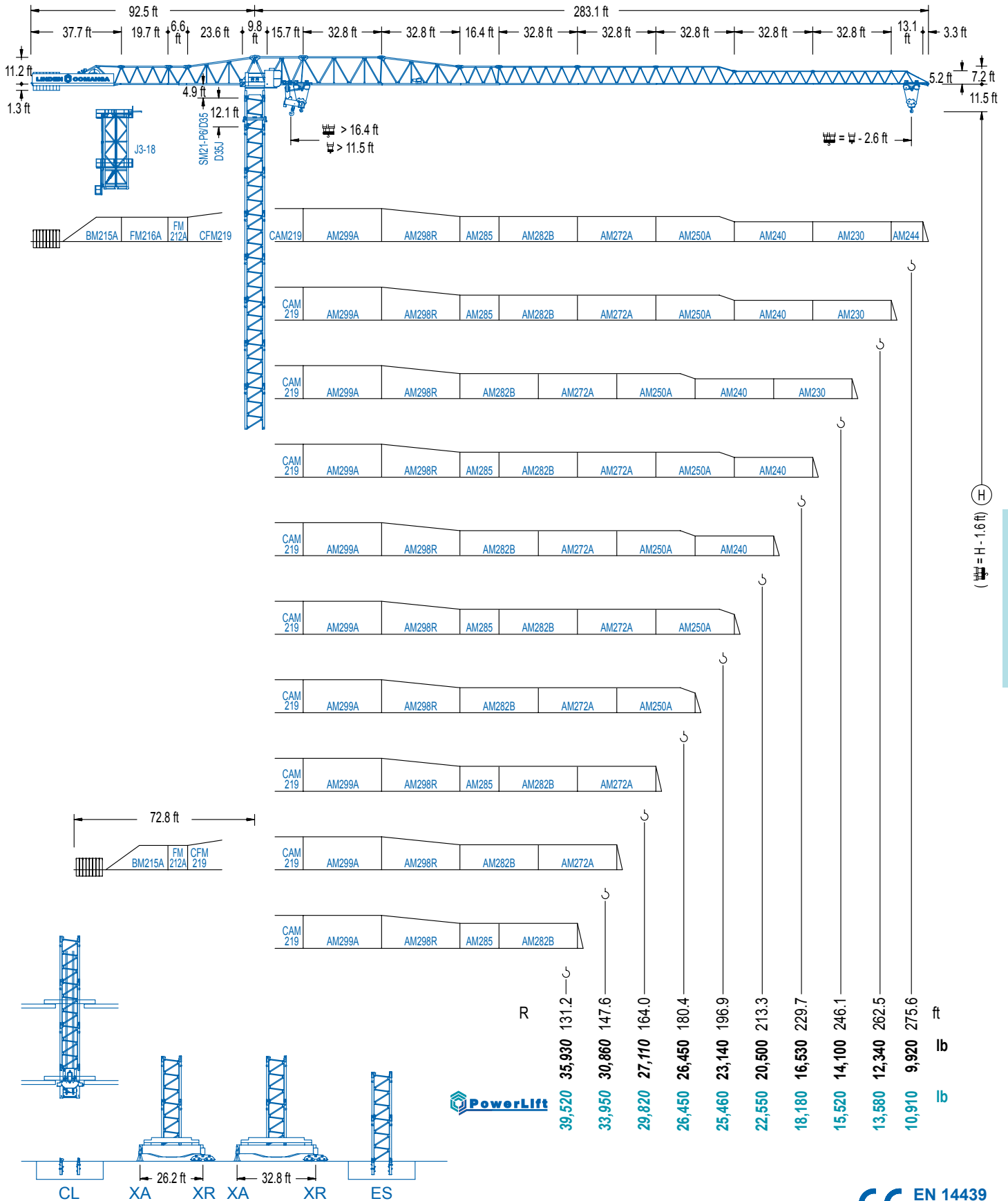


LC 2100

21 LC 660

52,910 lb



LC 2100

DIAGRAMA DE CARGAS

Load chart / Diagramme de charges / Lastdiagramm / Diagramma di carico / Диаграмма распределения нагрузки

R (ft)	2,100 ft								4,755 ft									
275.6	66.3	75.5	82.0	91.9	98.4	105.0	114.5	124.3	147.6	164.0	180.4	196.9	213.3	229.7	246.1	262.5	275.6	ft
	52,910	44,990	40,540	35,140	32,180	29,580	26,450	26,450	21,600	19,040	16,970	15,250	13,820	12,580	11,500	10,580	9,920	lb
262.5		73.5	82.0	91.9	98.4	105.0	127.3	139.8	147.6	164.0	180.4	196.9	213.3	229.7	246.1	262.5	ft	
		52,910	46,250	40,180	36,860	33,990	26,450	26,450	24,770	21,910	19,570	17,630	16,000	14,590	13,400	12,340	lb	
246.1		76.1	82.0	91.9	98.4	105.0	114.8	132.2	145.3	164.0	180.4	196.9	213.3	229.7	246.1	ft		
		52,910	48,280	41,990	38,530	35,530	31,720	26,450	26,450	22,990	20,540	18,510	16,820	15,360	14,100	lb		
229.7			80.1	91.9	98.4	105.0	114.8	131.2	139.4	154.2	180.4	196.9	213.3	229.7	ft			
			52,910	44,810	41,150	38,000	33,950	28,610	26,450	26,450	22,040	19,880	18,070	16,530	lb			
213.3			88.3	91.9	98.4	105.0	114.8	131.2	153.9	171.3	180.4	196.9	213.3	ft				
			52,910	50,370	46,340	42,830	38,360	32,420	26,450	26,450	24,910	22,530	20,500	lb				
196.9				89.9	98.4	105.0	114.8	131.2	147.6	156.8	175.5	196.9	ft					
				52,910	47,420	43,840	39,280	33,240	28,610	26,450	26,450	23,140	lb					
180.4				92.2	98.4	105.0	114.8	131.2	147.6	160.8	180.4	ft						
				52,910	48,800	45,150	40,450	34,280	29,510	26,450	26,450	lb						
164.0				94.2	98.4	105.0	114.8	131.2	147.6	161.3	ft							
				52,910	50,130	46,380	41,570	35,250	30,370	27,110	lb							
147.6				93.5	98.4	105.0	114.8	131.2	144.8	ft								
				52,910	49,730	46,010	41,240	34,960	30,860	lb								
131.2				93.5	98.4	105.0	114.8	128.4	ft									
				52,910	49,770	46,030	41,270	35,930	lb									

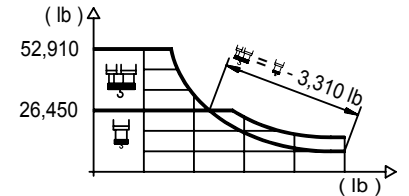
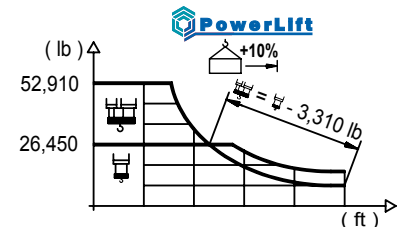


DIAGRAMA DE CARGAS POWERLIFT

Load chart PowerLift / Diagramme de charges PowerLift / Lastdiagramm PowerLift / Diagramma di carico PowerLift / Диаграмма распределения нагрузки PowerLift

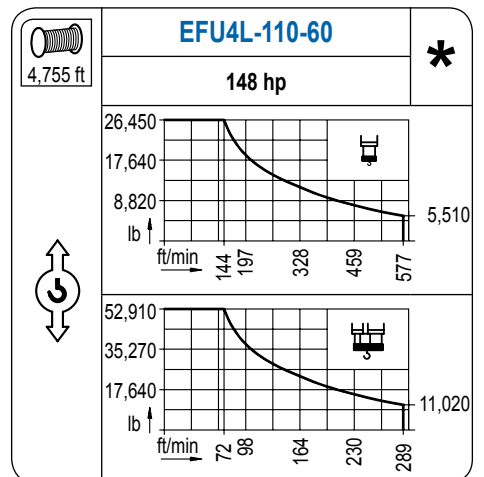
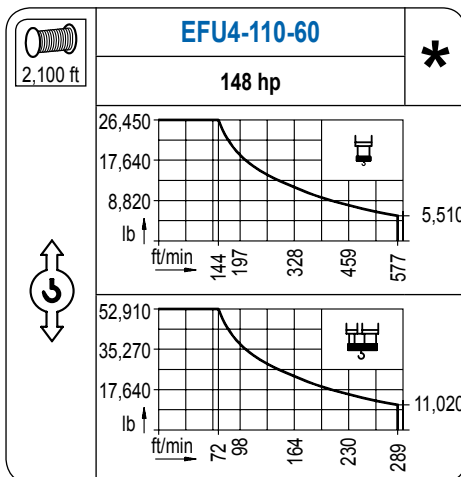
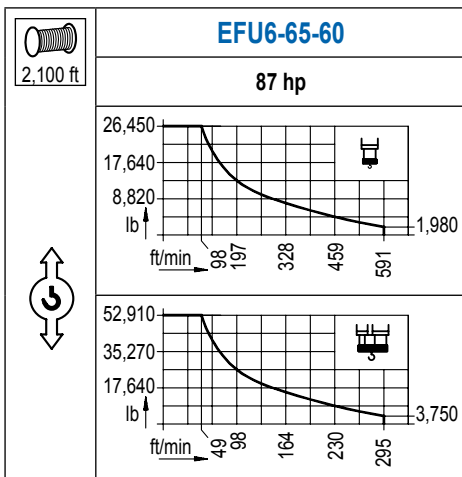
R (ft)	2,100 ft								4,755 ft									
275.6	69.2	75.5	82.0	91.9	98.4	105.0	119.4	133.2	147.6	164.0	180.4	196.9	213.3	229.7	246.1	262.5	275.6	ft
	52,910	47,500	42,850	37,190	34,080	31,370	26,450	26,450	23,470	20,740	18,510	16,660	15,100	13,770	12,630	11,610	10,910	lb
262.5		77.4	82.0	91.9	98.4	105.0	114.8	134.2	150.3	164.0	180.4	196.9	213.3	229.7	246.1	262.5	ft	
		52,910	49,250	42,850	39,330	36,280	32,400	26,450	26,450	23,890	21,380	19,290	17,520	16,000	14,720	13,580	lb	
246.1			80.4	91.9	98.4	105.0	114.8	139.8	156.8	164.0	180.4	196.9	213.3	229.7	246.1	ft		
			52,910	44,970	41,290	38,110	34,060	26,450	26,450	25,130	22,480	20,300	18,450	16,880	15,520	lb		
229.7			85.0	91.9	98.4	105.0	114.8	131.2	148.0	166.7	180.4	196.9	213.3	229.7	ft			
			52,910	48,190	44,310	40,930	36,610	30,950	26,450	26,450	24,160	21,820	19,860	18,180	lb			
213.3			94.2	98.4	105.0	114.8	131.2	147.6	164.4	185.7	196.9	213.3	ft					
			52,910	50,130	46,360	41,570	35,220	30,370	26,450	26,450	24,730	22,550	lb					
196.9				96.1	105.0	114.8	131.2	147.6	168.0	190.3	196.9	ft						
				52,910	47,590	42,700	36,220	31,230	26,450	26,450	25,460	lb						
180.4				98.8	105.0	114.8	131.2	147.6	172.6	180.4	ft							
				52,910	49,140	44,090	37,430	32,310	26,450	26,450	lb							
164.0				101.0	105.0	114.8	131.2	147.6	161.3	ft								
				52,910	50,610	45,430	38,600	33,350	29,820	lb								
147.6				100.7	105.0	114.8	131.2	144.8	ft									
				52,910	50,330	45,170	38,380	33,950	lb									
131.2				101.0	105.0	114.8	128.4	ft										
				52,910	50,480	45,300	39,520	lb										



LC 2100

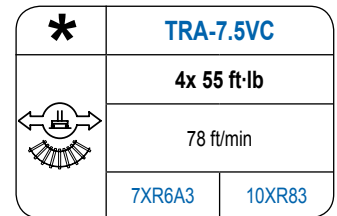
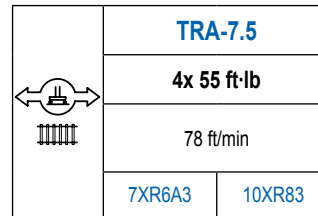
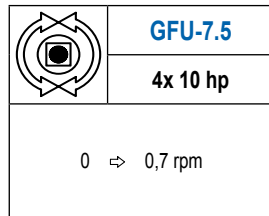
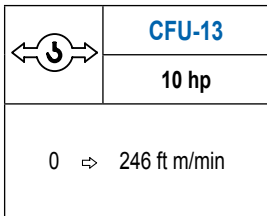
MECANISMOS

Mechanisms / Mécanismes / Antriebe / Meccanismi / Механизмы



MECANISMOS

Mechanisms / Mécanismes / Antriebe / Meccanismi / Механизмы



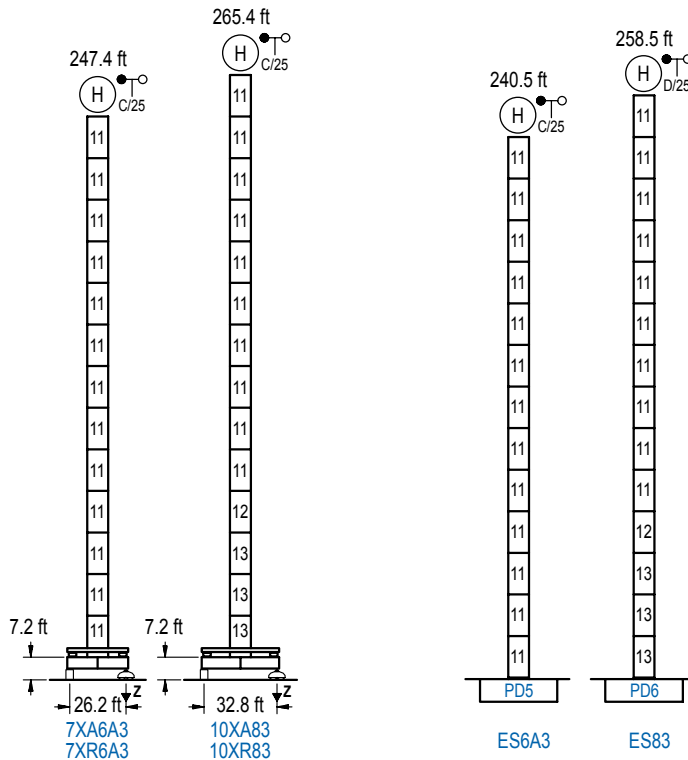
POTENCIA / POWER / PUISSANCE / LEISTUNG / POTENZA / МОЩНОСТЬ				Tensión de alimentación / Operating voltage / Tension de service / Betriebsspannung / Tensione di alimentazione / Напряжение источника питания	Generador / Generator / Générateur / Generator / Generatore / Генератор
Elevación / Hoist / Levage / Hub / Sollevamento / Тип механизма (подъем)	Carro / Trolley / Chariot / Laufkatze / Carrello / Грузовая тележка	Giro / Slewing / Rotation / Drehbewegung / Rotazione / Поворот	Traslación / Travel / Translation / Laufkatze / Verfahrweg / Traslazione / Ход	480 V 3ph 60 Hz	205 kVA 270 kVA 270 kVA
EFU6-65-60	CFU-13	(4x) GFU-7.5	(4x) TRA-7.5		
EFU4-110-60					
EFU4L-110-60					

Opcional / Optional / En option / Kaufoption / Opzionale / Опционально

ALTURAS BAJO GANCHO

Heights under hook / Hauteurs sous crochet / Hakenhöhen / Altezza sotto gancio / Высота под крюком

∅ 8.2 ft



n°	Ref.	∅	h
11	D35	8.2	18.0
12	TD36B	8.2	18.0
13	D36	8.2	18.0

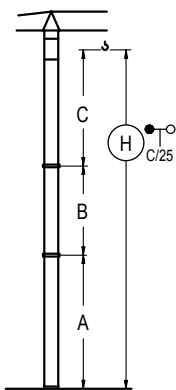
Z máx.	En servicio / In operation / En service / In Betrieb / In servizio / При работе	7XR6A3..351 kip 10XR83..331 kip
	Fuera de servicio / Out of service / Hors service / Ausser Betrieb / Fuori servizio / В стационарном состоянии	7XR6A3..412 kip 10XR83..395 kip

GRÚA ARRISTRADA

Braced crane / Grue à entretoisement / Abgespannter Kran / Gru ancorata / Нарастиваемый кран

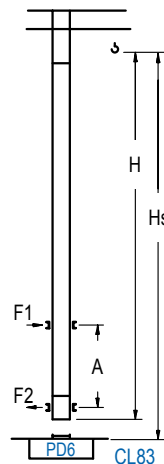
GRÚA TREPADORA

Internal climbing crane / Grue avec cage de télescopage intérieure / Kran mit klettern im Gebäude / Gru in rampante in cavedio / Кран с самоподъемом



	7XA6A3	10XA83
A max	205.7 79.4	223.8 97.4
B max	- 126.3 54.1	- 126.3 54.1
C max	168.0 168.0	168.0 168.0
H max	373.7 500.0	391.7 518.0

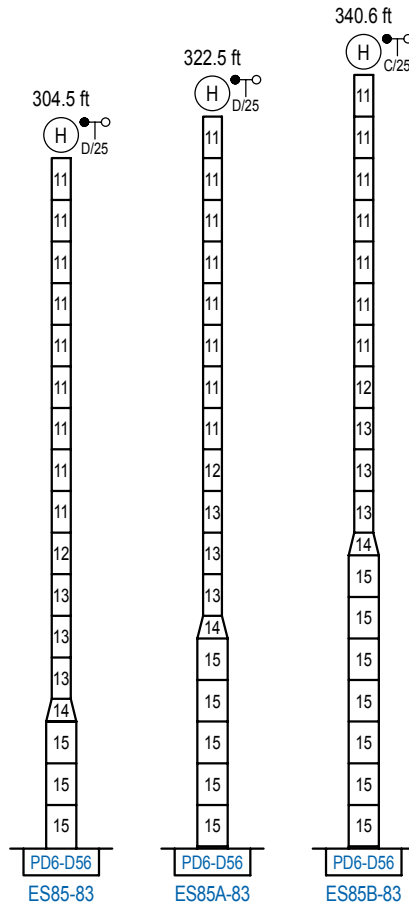
	ES6A3	ES83
A max	198.8 72.5	219.9 90.2
B max	- 126.3 54.1	- 126.3 54.1
C max	168.0 168.0	168.0 168.0
H max	366.8 493.1	384.8 511.1



H	Hs < 1,310 ft	
	A max (ft)	A min (ft)
198.5 ft 5x D35 + TD36B + 4x D36A + CLD36	71.9	26.2
180.4 ft 4x D35 + TD36B + 4x D36A + CLD36	62.7	26.2
162.4 ft 3x D35 + TD36B + 4x D36A + CLD36	53.8	26.2

n°	Ref.	∅	h
11	D35	8.2	18.0
12	TD36B	8.2	18.0
22	D36A	8.2	18.0
19	CLD36	8.2	12.5

Otras zonas de viento, alturas superiores, arriostamientos o trepado interno consultar / Other wind zones, additional hook heights, tie frames or internal climbing on request / Autres zones de vent, des hauteurs supplémentaires, entretoisements ou grues avec cage de télescopage intérieure, sur demande / Andere Windzonen, weitere Hakenhöhen, Abspannungen zum Gebäude oder Klettern im Gebäude auf Anfrage / Per zone con velocità del vento particolari, altezze superiori, ancoraggi o rampante in cavedio, consultare il fabbricante / При других ветренных зонах, при большой высоте, привязках к зданию или наращивании крана внутри здания проконсультируйтесь с нами



	n°	Ref.	Ø	h	n°	Ref.	Ø	h
		11	D35	8.2	18.0	14	TD56D36	13.1
	12	TD36B	8.2	18.0	15	D56	13.1	18.0
	13	D36	8.2	18.0				

Otras zonas de viento o alturas superiores consultar / Other wind zones or additional hook heights on request / Autres zones de vent ou des hauteurs supplémentaires sur demande / Andere Windzonen oder weitere Hakenhöhen auf Anfrage / Per zone con velocità del vento particolari o altezze superiori consultare il fabbricante / При других ветренных зонах о при большой высоте проконсультируйтесь с нами