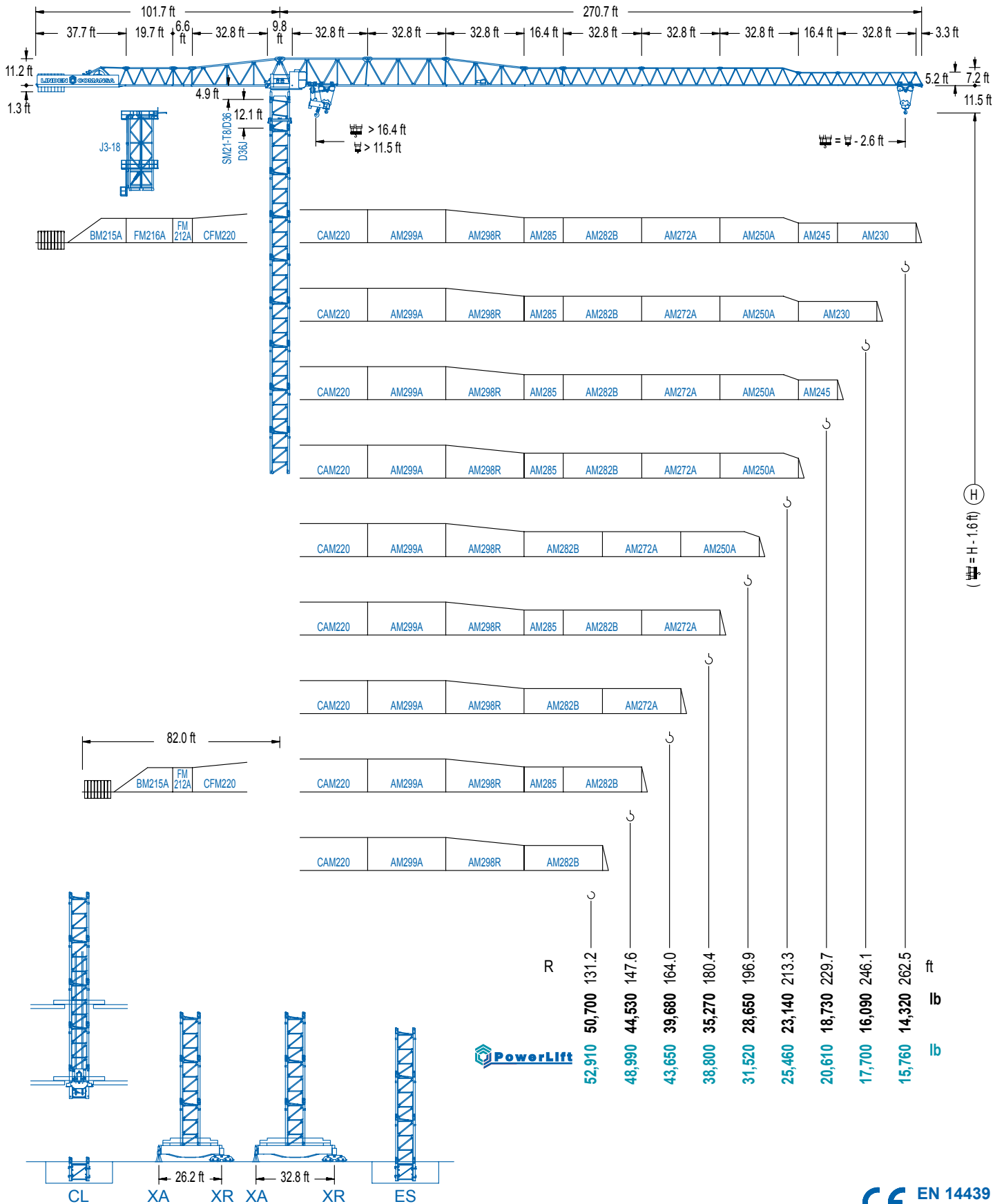


**LC 2100**

**21 LC 750**

**105,820 lb**

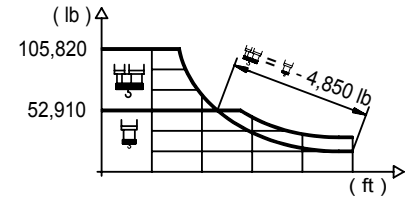


**LC 2100**

## DIAGRAMA DE CARGAS

Load chart / Diagramme de charges / Lastdiagramm / Diagramma di carico / Диаграмма распределения нагрузки

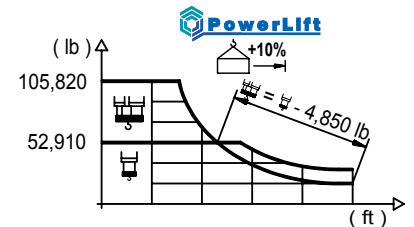
R (ft)	21						21													
262.5	48.2	55.8	62.3	65.6	72.2	84.3	89.2	105.0	114.8	124.7	131.2	147.6	164.0	180.4	196.9	213.3	229.7	246.1	262.5	ft
	105,820	88,250	77,000	72,280	64,240	52,910	52,910	43,840	39,500	35,910	33,810	29,400	25,920	23,080	20,740	18,760	17,060	15,600	14,320	lb
246.1	48.9	55.8	62.3	65.6	72.2	86.0	91.2	105.0	114.8	124.7	131.2	147.6	164.0	180.4	196.9	213.3	229.7	246.1		ft
	105,820	90,190	78,700	73,890	65,690	52,910	52,910	45,010	40,580	36,880	34,740	30,240	26,670	23,760	21,340	19,310	17,590	16,090		lb
229.7	50.9	55.8	62.3	65.6	72.2	89.6	95.8	105.0	114.8	124.7	131.2	147.6	164.0	180.4	196.9	213.3	229.7			ft
	105,820	94,840	82,820	77,800	69,200	52,910	52,910	47,590	42,940	39,040	36,790	32,050	28,280	25,220	22,700	20,560	18,730			lb
213.3		55.4	62.3	65.6	72.2	82.0	97.8	105.0	114.8	124.7	131.2	147.6	164.0	180.4	196.9	213.3				ft
		105,820	91,750	86,240	76,830	65,710	52,910	52,910	47,830	43,540	41,040	35,820	31,680	28,300	25,500	23,140				lb
196.9			60.4	65.6	72.2	82.0	95.1	107.0	115.8	124.7	131.2	147.6	164.0	180.4	196.9					ft
			105,820	95,720	85,400	73,190	61,060	52,910	52,910	48,610	45,850	40,070	35,470	31,740	28,650					lb
180.4				65.3	72.2	82.0	95.1	105.0	116.1	126.3	131.2	147.6	164.0	180.4						ft
				105,820	94,090	80,770	67,540	59,890	52,910	52,910	50,740	44,400	39,370	35,270						lb
164.0				65.6	72.2	82.0	95.1	105.0	116.5	127.3	131.2	147.6	164.0							ft
				105,820	94,440	81,080	67,810	60,140	52,910	52,910	51,140	44,750	39,680							lb
147.6				65.0	72.2	82.0	95.1	105.0	115.5	127.0	131.2	147.6								ft
				105,820	93,560	80,310	67,150	59,540	52,910	52,910	50,880	44,530								lb
131.2				64.6	72.2	82.0	95.1	105.0	114.5	126.3	131.2									ft
				105,820	92,740	79,600	66,530	58,990	52,910	52,910	50,700									lb



## DIAGRAMA DE CARGAS POWERLIFT

Load chart PowerLift / Diagramme de charges PowerLift / Lastdiagramm PowerLift / Diagramma di carico PowerLift / Диаграмма распределения нагрузки PowerLift

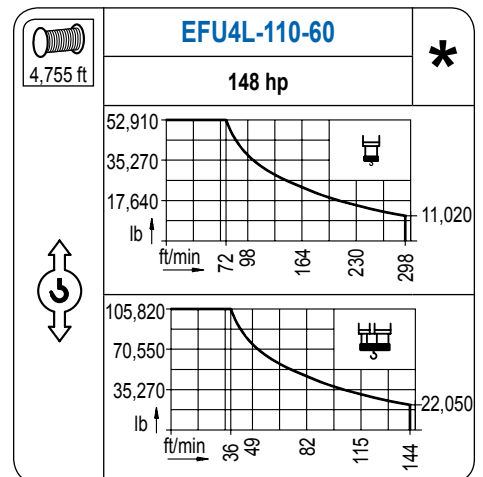
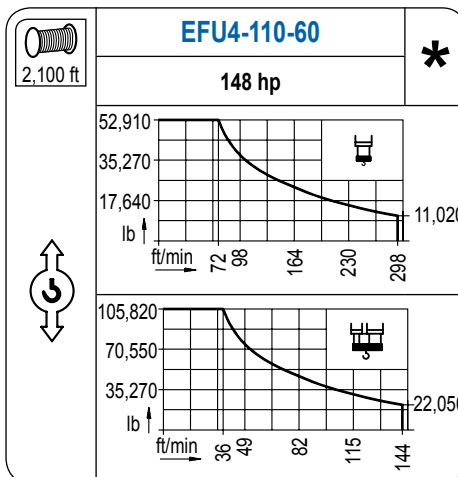
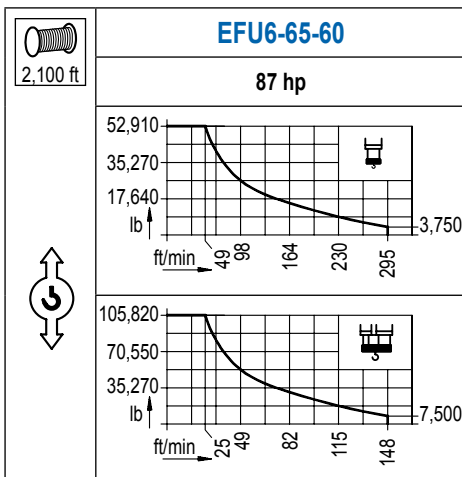
R (ft)	21						21													
262.5	50.2	59.1	65.6	72.2	82.0	87.9	95.5	105.0	114.8	124.7	131.2	147.6	164.0	180.4	196.9	213.3	229.7	246.1	262.5	ft
	105,820	86,750	76,250	67,830	57,870	52,910	52,910	47,530	42,870	38,970	36,720	32,010	28,240	25,190	22,660	20,520	18,710	17,120	15,760	lb
246.1	51.2	59.1	65.6	72.2	82.0	89.9	98.1	105.0	114.8	124.7	131.2	147.6	164.0	180.4	196.9	213.3	229.7	246.1		ft
	105,820	89,060	78,320	69,680	59,480	52,910	52,910	48,890	44,110	40,120	37,800	32,950	29,100	25,970	23,360	21,180	19,310	17,700		lb
229.7	53.5	59.1	65.6	72.2	82.0	88.6	94.5	103.0	114.8	124.7	131.2	147.6	164.0	180.4	196.9	213.3	229.7			ft
	105,820	94,180	82,890	73,810	63,070	57,310	52,910	52,910	46,780	42,570	40,120	35,000	30,930	27,620	24,880	22,570	20,610			lb
213.3		58.7	65.6	72.2	82.0	88.6	98.4	103.7	113.5	124.7	131.2	147.6	164.0	180.4	196.9	213.3				ft
		105,820	92,430	82,420	70,590	64,260	56,410	52,910	52,910	47,570	44,860	39,190	34,700	31,040	28,020	25,460				lb
196.9			64.3	72.2	82.0	88.6	98.4	105.0	113.8	125.3	131.2	147.6	164.0	180.4	196.9					ft
			105,820	92,080	79,030	72,020	63,380	58,550	52,910	52,910	50,190	43,910	38,930	34,870	31,520					lb
180.4				69.9	82.0	88.6	98.4	105.0	114.8	124.3	137.1	147.6	164.0	180.4						ft
				105,820	87,610	79,930	70,430	65,140	58,390	52,910	52,910	48,740	43,250	38,800						lb
164.0				70.2	82.0	88.6	98.4	105.0	114.8	125.0	138.5	147.6	164.0							ft
				105,820	88,160	80,440	70,890	65,580	58,790	52,910	52,910	49,180	43,650							lb
147.6				69.9	82.0	88.6	98.4	105.0	114.8	124.3	137.8	147.6								ft
				105,820	87,520	79,850	70,370	65,100	58,350	52,910	52,910	48,980								lb
131.2				69.6	82.0	88.6	98.4	105.0	114.8	123.7	131.2									ft
				105,820	86,940	79,320	69,900	64,660	57,950	52,910	52,910									lb



LC 2100

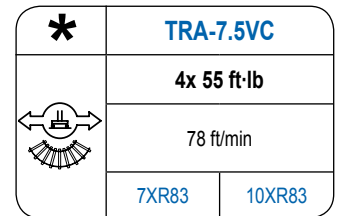
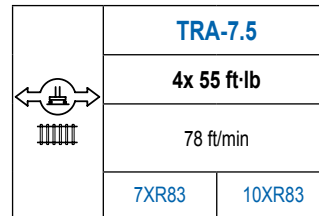
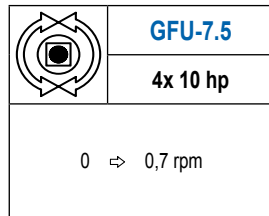
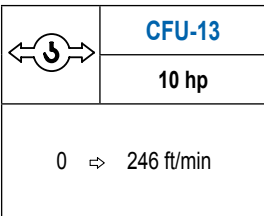
## MECANISMOS

Mechanisms / Mécanismes / Antriebe / Meccanismi / Механизмы



## MECANISMOS

Mechanisms / Mécanismes / Antriebe / Meccanismi / Механизмы



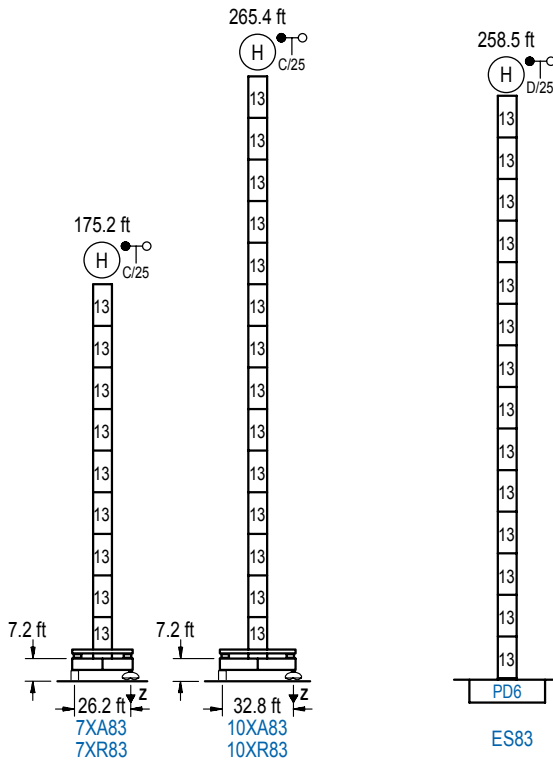
POTENCIA / POWER / PUISSANCE / LEISTUNG / POTENZA / МОЩНОСТЬ				Tensión de alimentación / Operating voltage / Tension de service / Betriebsspannung / Tensione di alimentazione / Напряжение источника питания	Generador / Generator / Générateur / Generator / Generatore / Генератор
Elevación / Hoist / Levage / Hub / Sollevamento / Тип механизма (подъем)	Carro / Trolley / Chariot / Laufkatze / Carrolo / Грузовая тележка	Giro / Slewing / Rotation / Drehbewegung / Rotazione / Поворот	Traslación / Travel / Translation / Verfahrbewegung / Traslazione / Ход	480 V 3ph 60 Hz	205 kVA 270 kVA 270 kVA
EFU6-65-60	CFU-13	(4x) GFU-7.5	(4x) TRA-7.5		
EFU4-110-60					
EFU4L-110-60					

Opcional / Optional / En option / Kaufoption / Opzionale / Опционально  
**\***

## ALTURAS BAJO GANCHO

Heights under hook / Hauteurs sous crochet / Hakenhöhen / Altezza sotto gancio / Высота под крюком

∅ 8.2 ft



n°	Ref.	∅	h
13	D36	8.2	18.0

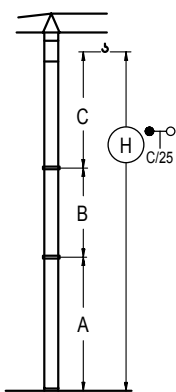
Z máx.	En servicio / In operation / En service / In Betrieb / In servizio / При работе	7XR83... 359 kip 10XR83.. 377 kip
	Fuera de servicio / Out of service / Hors service / Ausser Betrieb / Fuori servizio / В стационарном состоянии	7XR83... 245 kip 10XR83.. 357 kip

## GRÚA ARRIOSTRADA

Braced crane / Grue à entretoisement / Abgespannter Kran / Gru ancorata / Нарастиваемый кран

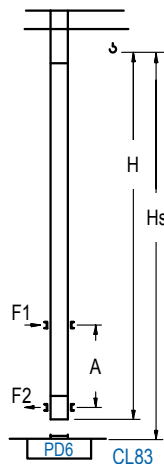
## GRÚA TREPADORA

Internal climbing crane / Grue avec cage de télescopage intérieure / Kran mit klettern im Gebäude / Gru in rampante in cavedio / Кран с самоподъемом



	7XA6A3	10XA83
A max	133.5 133.5	223.8 133.5
B max	- 162.4 108.3	- 162.4 108.3
C max	204.1 204.1	204.1 204.1
H max	337.6 500.0	427.8 590.2

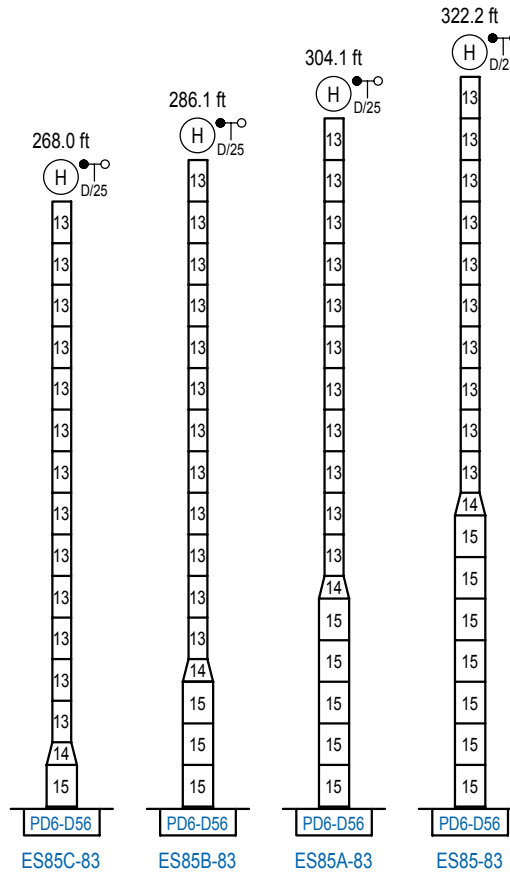
	ES83
A max	216.9 126.6
B max	- 162.4 108.3
C max	204.1 204.1
H max	420.9 583.3



H	Hs < 1,310 ft	A max A min (ft)	
		A max (ft)	A min (ft)
198.5 ft 6x D36 + 4x D36A + CLD36	71.9	26.2	
180.4 ft 5x D36 + 4x D36A + CLD36	62.7	26.2	
162.4 ft 4x D36 + 4x D36A + CLD36	53.8	26.2	

n°	Ref.	∅	h
13	D36	8.2	18.0
22	D36A	8.2	18.0
19	CLD36	8.2	12.5

Otras zonas de viento, alturas superiores, arriostramientos o trepado interno consultar / Other wind zones, additional hook heights, tie frames or internal climbing on request / Autres zones de vent, des hauteurs supplémentaires, entretoisements ou grues avec cage de télescopage intérieure, sur demande / Andere Windzonen, weitere Hakenhöhen, Abspannungen zum Gebäude oder Klettern im Gebäude auf Anfrage / Per zone con velocità del vento particolari, altezze superiori, ancoraggi o rampante in cavedio, consultare il fabbricante / При других ветренных зонах, при большой высоте, привязках к зданию или наращивании крана внутри здания проконсультируйтесь с нами



	n°	Ref.	Ø	h	n°	Ref.	Ø	h
		13	D36	8.2	18.0	14	TD56D36	13.1
					15	D56	13.1	18.0

Otras zonas de viento o alturas superiores consultar / Other wind zones or additional hook heights on request / Autres zones de vent ou des hauteurs supplémentaires sur demande / Andere Windzonen oder weitere Hakenhöhen auf Anfrage / Per zone con velocità del vento particolari o altezze superiori consultare il fabbricante / При других ветренных зонах о при большой высоте проконсультируйтесь с нами

LC 2100



**Construcciones Metálicas COMANSA S. A.**

Tel.: (+34) 948 335 020 / Fax: (+34) 948 330 810 / E-mail: info@comansa.com  
 Polígono Urbizkain, Ctra. Aoiz nº1 31620, Huarte (Navarra), SPAIN

DS.1548.07.IA 11/16 **21 LC 750/105,820 Ib**

Reserva de modificaciones. Subject to modifications. Modifications réservées. Konstruktionsänderungen vorbehalten.  
 Il Fabbricante si riserva la facoltà di apportare modifiche. Возможны изменения.