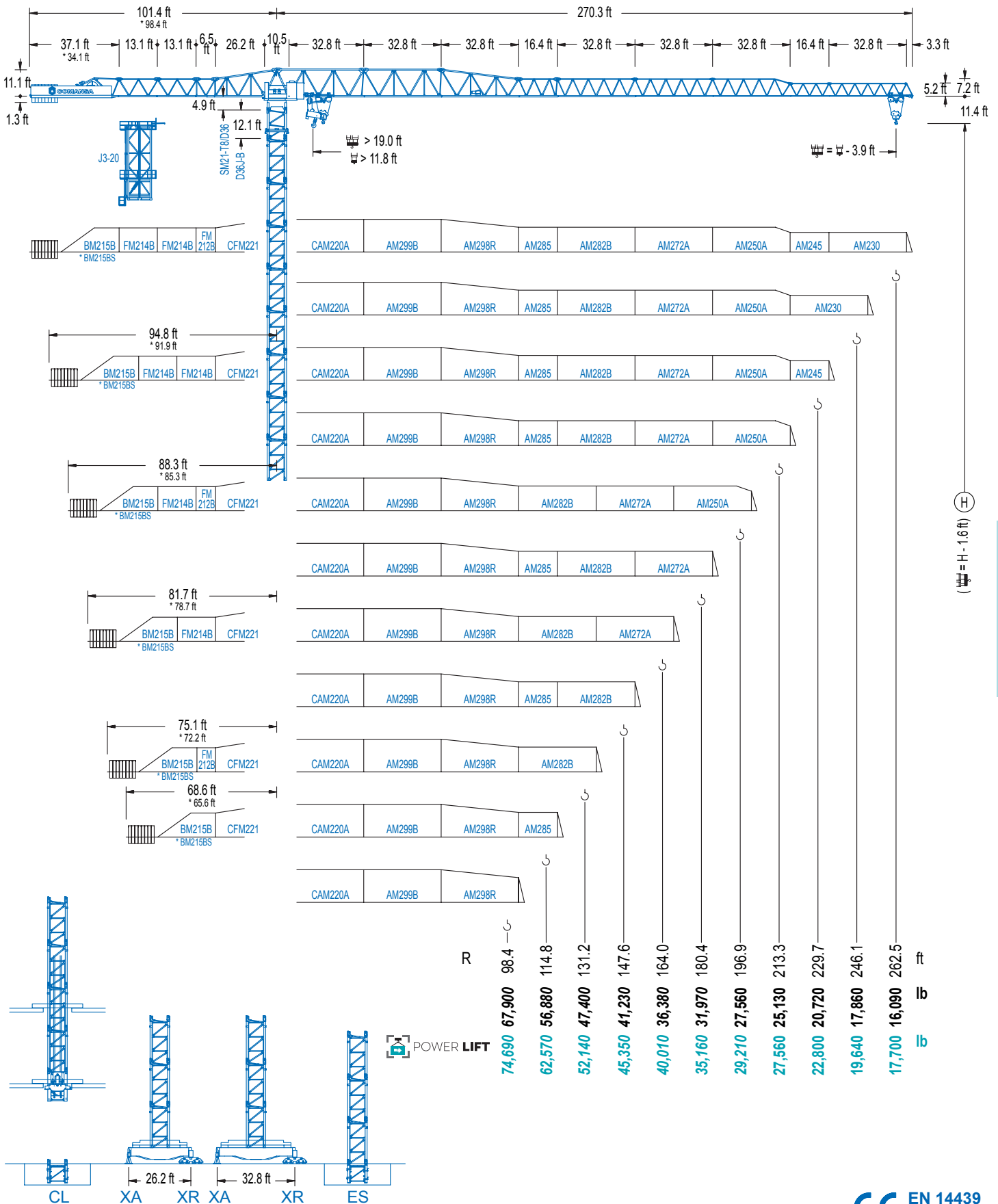


2100 Series

21 LC 750

82,670 lb



2100 Series

(H = H - 1.6 ft)

DIAGRAMA DE CARGAS

Load chart / Diagramme de charges / Lastdiagramm / Diagramma di carico / Диаграмма распределения нагрузки

R (ft)																	
262.5	56.8	65.6	75.5	82.0	91.9	98.4	114.8	131.2	138.5	164.0	180.4	196.9	213.3	229.7	246.1	262.5	ft
	82,670	69,690	58,880	53,240	46,360	42,570	35,100	29,590	27,560	27,560	24,740	22,400	20,460	18,780	17,350	16,090	lb
246.1	58.1	65.6	75.5	82.0	91.9	98.4	114.8	131.2	141.7	168.0	180.4	196.9	213.3	229.7	246.1		ft
	82,670	71,610	60,540	54,740	47,710	43,830	36,180	30,510	27,560	27,560	25,420	23,060	21,050	19,330	17,860		lb
229.7	61.7	65.6	75.5	82.0	91.9	98.4	114.8	131.2	147.6	150.6	178.5	196.9	213.3	229.7			ft
	82,670	76,590	64,840	58,690	51,190	47,070	38,910	32,890	28,260	27,560	27,560	24,670	22,530	20,720			lb
213.3	67.3	75.5	82.0	91.9	98.4	114.8	131.2	147.6	160.8	165.4	196.5	213.3					ft
	82,670	72,290	65,480	57,210	52,670	43,700	37,040	31,920	28,620	27,560	27,560	25,130					lb
196.9		75.8	82.0	91.9	98.4	114.8	131.2	147.6	164.0	187.7	196.9						ft
		82,670	75,510	66,120	60,940	50,730	43,170	37,350	32,740	27,560	27,560						lb
180.4		80.1	91.9	98.4	114.8	131.2	147.6	164.0	176.5								ft
		82,670	70,370	64,900	54,080	46,100	39,950	35,050	31,970								lb
164.0		80.4	91.9	98.4	114.8	131.2	147.6	160.1									ft
		82,670	70,810	65,300	54,430	46,380	40,210	36,380									lb
147.6		80.1	91.9	98.4	114.8	131.2	143.7										ft
		82,670	70,280	64,820	54,010	46,030	41,230										lb
131.2		79.4	91.9	98.4	114.8	127.3											ft
		82,670	69,780	64,350	53,620	47,400											lb
114.8		80.7	91.9	98.4	110.9												ft
		82,670	70,990	65,480	56,880												lb
98.4		79.7	91.9	94.5													ft
		82,670	70,170	67,900													lb

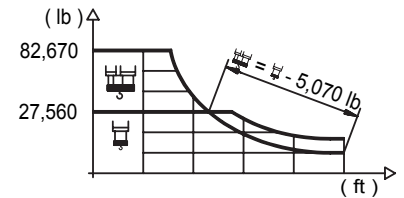
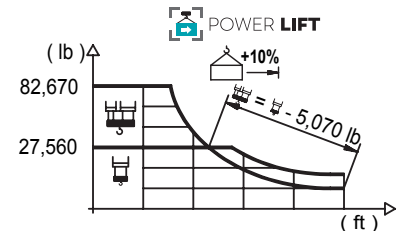


DIAGRAMA DE CARGAS POWERLIFT

Load chart PowerLift / Diagramme de charges PowerLift / Lastdiagramm PowerLift / Diagramma di carico PowerLift / Диаграмма распределения нагрузки PowerLift

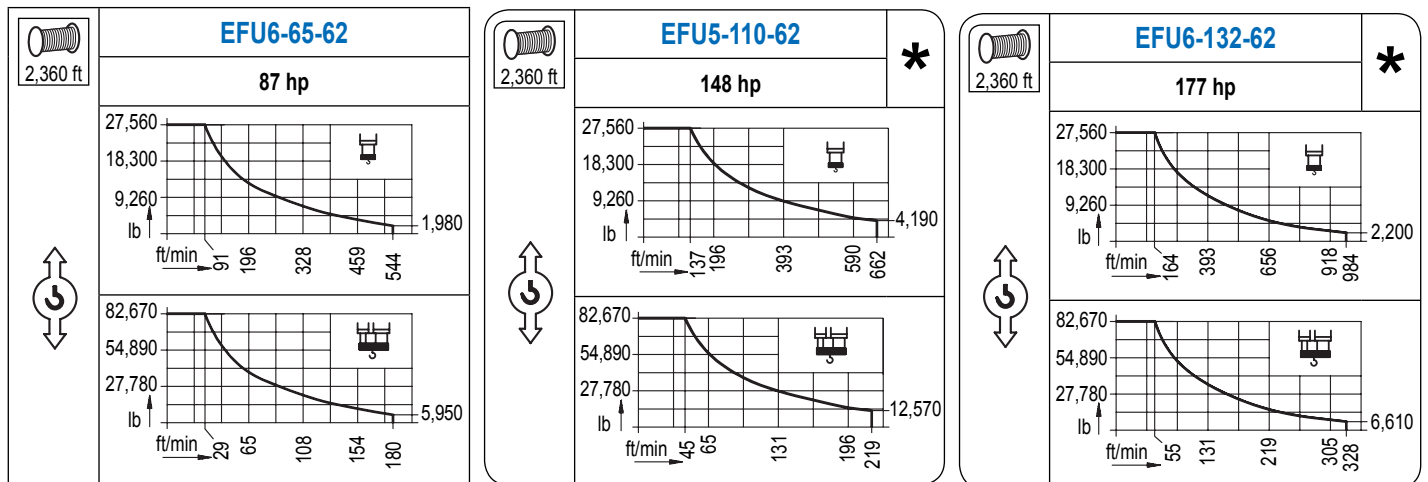
R (ft)																	
262.5	61.4	65.6	75.5	82.0	91.9	98.4	114.8	131.2	150.3	177.8	180.4	196.9	213.3	229.7	246.1	262.5	ft
	82,670	76,430	64,680	58,530	51,060	46,960	38,820	32,800	27,560	27,560	27,090	24,560	22,440	20,640	19,070	17,700	lb
246.1		63.0	75.5	82.0	91.9	98.4	114.8	131.2	147.6	153.9	182.4	196.9	213.3	229.7	246.1		ft
		82,670	66,580	60,250	52,580	48,370	40,040	33,860	29,120	27,560	27,560	25,290	23,100	21,250	19,640		lb
229.7		66.6	75.5	82.0	91.9	98.4	114.8	131.2	147.6	163.7	193.9	196.9	213.3	229.7			ft
		82,670	71,340	64,620	56,460	51,960	43,080	36,530	31,480	27,560	27,560	27,090	24,780	22,800			lb
213.3			73.2	82.0	91.9	98.4	114.8	131.2	147.6	164.0	177.2	180.1	213.3				ft
			82,670	72,160	63,140	58,160	48,370	41,120	35,540	31,110	28,170	27,560	27,560				lb
196.9			81.4	91.9	98.4	114.8	131.2	147.6	164.0	180.4	192.9						ft
			82,670	71,830	66,270	55,250	47,110	40,830	35,850	31,810	29,210						lb
180.4			86.6	91.9	98.4	114.8	131.2	147.6	164.0	176.5							ft
			82,670	76,680	70,770	59,080	50,440	43,780	38,490	35,160							lb
164.0			86.6	91.9	98.4	114.8	131.2	147.6	160.1								ft
			82,670	77,290	71,340	59,570	50,860	44,160	40,010								lb
147.6			86.3	91.9	98.4	114.8	131.2	143.7									ft
			82,670	76,870	70,940	59,220	50,550	45,350									lb
131.2			86.0	91.9	98.4	114.8	127.3										ft
			82,670	76,460	70,570	58,910	52,140										lb
114.8			87.3	91.9	98.4	110.9											ft
			82,670	77,910	71,910	62,570											lb
98.4			86.6	91.9	94.5												ft
			82,670	77,180	74,690												lb



Datos válidos hasta 328 ft de ABG. Para alturas mayores consultar / Valid data up to 328 ft HUH. Additional heights on request / Données valables jusqu'à 328 ft HSC. Pour des autres hauteurs, merci de nous consulter / Gültige Daten bis zu 328 ft HH. Bei höheren Hakenhöhen nachfragen / Dati validi fino a 328 ft ASG. Per altezze superiori consultare Comansa / Допустимые данные до 328 фут ВПК. Для более высоких высот консультируйтесь

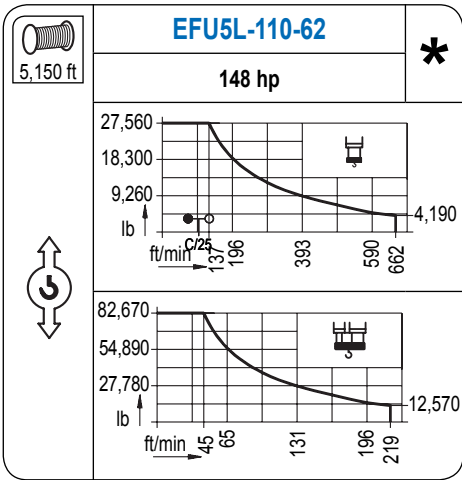
MECANISMOS

Mechanisms / Mécanismes / Antriebe / Meccanismi / Механизмы

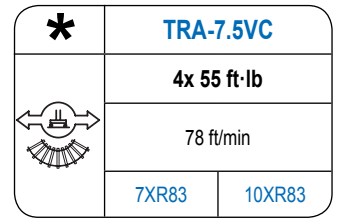
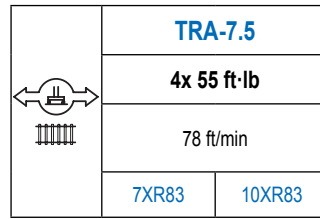
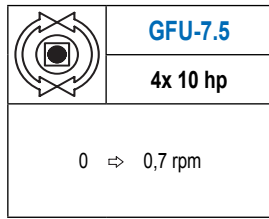
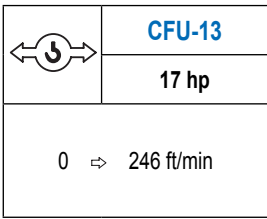
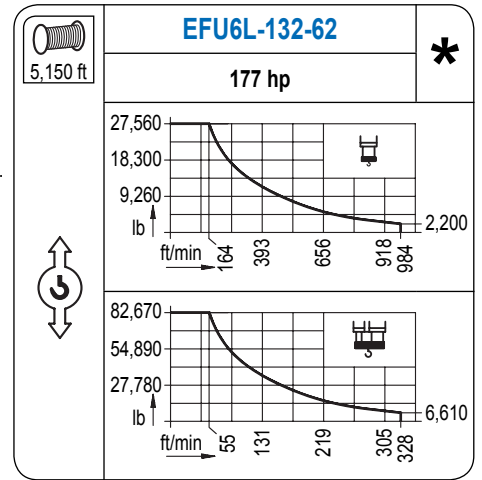


MECANISMOS

Mechanisms / Mécanismes / Antriebe / Meccanismi / Механизмы



Para mecanismos de alta capacidad de cable consultar cargas. / For mechanisms with high drum capacity, request loads. / Pour des mécanismes avec une grande capacité de câble il faut consulter. / Für Hubmechanismen mit hoher Kabelkapazität, Lastdiagramm anfragen. / Gru con tamburo ad alta capacità di avvolgimento fune, consultare il diagramma di carico. / Проконсультируйтесь о нагрузках при механизмах с большей вместимостью кабеля.



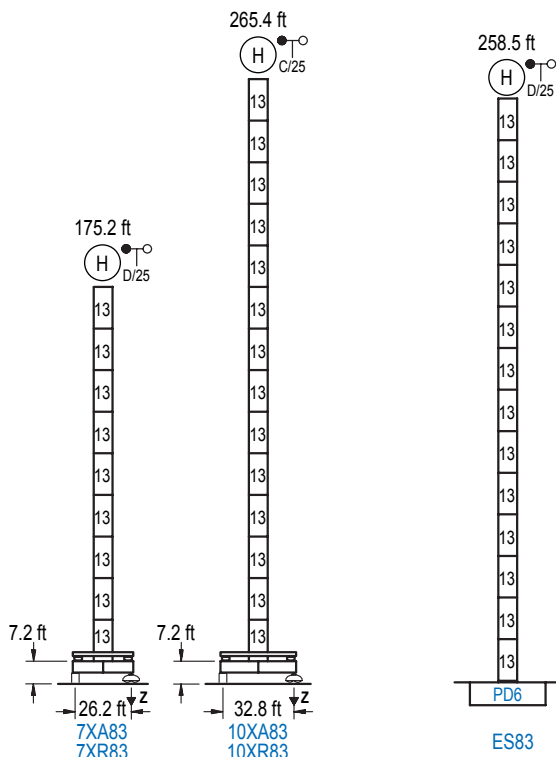
Elevación / Hoist / Levage / Hub / Sollevamento / Тип механизма (подъем)	Carro / Trolley / Chariot / Laufkatze / Carrelo / Грузовая тележка	Giro / Slewing / Rotation / Drehbewegung / Rotazione / Поворот	Traslación / Travel / Translation / Verfahrbewegung / Traslazione / Ход	Tensión de alimentación / Operating voltage / Tension de service / Betriebsspannung / Tensione di alimentazione / Напряжение источника питания	Potencia requerida / Required power / Puissance requise / Benötigte Leistung / Potenza richiesta / требуемая мощность
EFU6-65-62	CFU-13	(4x) GFU-7.5	(4x) TRA-7.5	480 V 3ph 60 Hz	99 kVA
EFU5-110-62					144 kVA
EFU5L-110-62					144 kVA
EFU6-132-62					166 kVA
EFU6L-132-62					166 kVA

Optional / Optional / En option / Kaufoption / Opzionale / Опционально

ALTURAS BAJO GANCHO

Heights under hook / Hauteurs sous crochet / Hakenhöhen / Altezza sotto gancio / Высота под крюком

∅ 8.2 ft



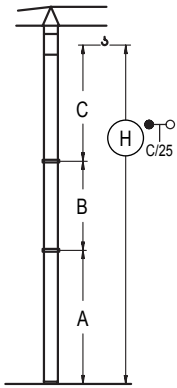
	n°	Ref.	∅	h
	13	D36B	8.2	18.0

Z máx.	En servicio / In operation / En service / In Betrieb / In servizio / При работе	7XR83.....377 kip 10XR83.....377 kip
	Fuera de servicio / Out of service / Hors service / Ausser Betrieb / Fuori servizio / В стационарном состоянии	7XR83.....304 kip 10XR83.....425 kip

Otras zonas de viento o alturas superiores consultar / Other wind zones or additional hook heights on request / Autres zones de vent ou des hauteurs supplémentaires sur demande / Andere Windzonen oder weitere Hakenhöhen auf Anfrage / Per zone con velocità del vento particolari o altezze superiori consultare il fabbricante / При других ветренных зонах or при большой высоте проконсультируйтесь с нами

GRÚA ARRIOSTRADA

Braced crane / Grue à entretoisement / Abgespannter Kran / Gru ancorata / Нарастиваемый кран

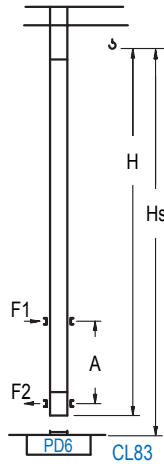


	7XA83		10XA83	
A max	133.5		223.8	
A min	133.5		133.5	
B max	-	162.4	-	162.4
B min		108.3		108.3
C max	204.1	204.1	204.1	204.1
H max	337.6	500.0	427.8	590.2

	ES83	
A max	216.9	
A min	126.6	
B max	-	162.4
B min		108.3
C max	204.1	204.1
H max	420.9	583.3

GRÚA TREPADORA

Internal climbing crane / Grue avec cage de télescopage intérieure / Kran mit klettern im Gebäude / Gru in rampante in cavedio / Кран с самоподъемом



H	C/25	Hs < 1,310 ft	
		A max (ft)	A min (ft)
198.5 ft			
6x D36B + 4x D36A + CLD36A-28		71.9	29.5
180.4 ft			
5x D36B + 4x D36A + CLD36A-28		62.7	29.5
162.4 ft			
4x D36B + 4x D36A + CLD36A-28		53.8	29.5

n°	Ref.	h	h
13	D36B	8.2	18.0
22	D36A	8.2	18.0
19	CLD36A-28	8.2	12.5

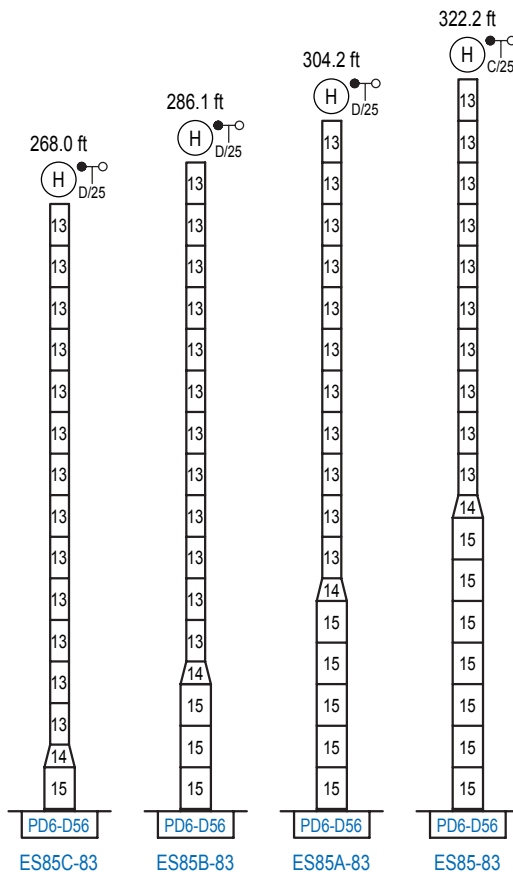
Otras zonas de viento, alturas superiores, arriostramientos o trepado interno consultar / Other wind zones, additional hook heights, tie frames or internal climbing on request / Autres zones de vent, des hauteurs supplémentaires, entretoisements ou grues avec cage de télescopage intérieure, sur demande / Andere Windzonen, weitere Hakenhöhen, Abspannungen zum Gebäude oder Klettern im Gebäude auf Anfrage / Per zone con velocità del vento particolari, altezze superiori, ancoraggi o rampante in cavedio, consultare il fabbricante / При других ветренных зонах, при большой высоте, привязках к зданию или наращивании крана внутри здания проконсультируйтесь с нами

ALTURAS ESPECIALES

Special heights / Spéciaux hauteurs / Extra Höhen / Conformazioni raccordate per altezze speciali / Для специальной высоты

13.1 ft

2100 Series



n°	Ref.	h	h
13	D36B	8.2	18.0
14	TD56D36	13.1	9.8
15	D56	13.1	18.0

Otras zonas de viento o alturas superiores consultar / Other wind zones or additional hook heights on request / Autres zones de vent ou des hauteurs supplémentaires sur demande / Andere Windzonen oder weitere Hakenhöhen auf Anfrage / Per zone con velocità del vento particolari o altezze superiori consultare il fabbricante / При других ветренных зонах или при большой высоте проконсультируйтесь с нами