

DIAGRAMA DE CARGAS

Load chart / Diagramme de charges / Lastdiagramm / Diagramma di carico / Диаграмма распределения нагрузки

R (ft)	2,100 ft										4,755 ft						
262.5	86.6	91.9	98.4	105.0	111.5	118.1	124.7	131.2	150.9	166.3	180.4	196.9	213.3	229.7	246.1	262.5	ft
	52,910	49,160	45,210	41,790	38,770	36,130	33,750	31,630	26,450	26,450	24,090	21,750	19,790	18,140	16,680	15,430	lb
246.1	88.3	91.9	98.4	105.0	111.5	118.1	124.7	131.2	153.9	170.6	180.4	196.9	213.3	229.7	246.1		ft
	52,910	50,390	46,360	42,850	39,770	37,050	34,630	32,470	26,450	26,450	24,770	22,390	20,390	18,670	17,190		lb
229.7		92.2	98.4	105.0	111.5	118.1	124.7	131.2	147.6	161.1	179.5	196.9	213.3	229.7			ft
		52,910	48,960	45,280	42,060	39,210	36,680	34,410	29,620	26,450	26,450	23,760	21,640	19,840			lb
213.3			101.0	105.0	111.5	118.1	124.7	131.2	147.6	164.0	176.8	197.8	213.3				ft
			52,910	50,480	46,930	43,800	41,000	38,510	33,260	29,120	26,450	26,450	24,250				lb
196.9					110.6	118.1	124.7	131.2	147.6	164.0	180.4	194.2					ft
					52,910	48,940	45,870	43,120	37,360	32,780	29,050	26,450					lb
180.4						120.4	124.7	131.2	147.6	164.0	177.8						ft
						52,910	50,830	47,810	41,510	36,500	33,060						lb
164.0							121.1	124.7	131.2	147.6	161.4						ft
							52,910	51,080	48,060	41,730	37,470						lb
147.6								120.1	124.7	131.2	145.0						ft
								52,910	50,660	47,660	42,320						lb
131.2									119.4	124.7	128.6						ft
									52,910	50,240	48,500						lb

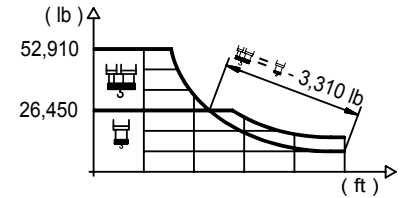
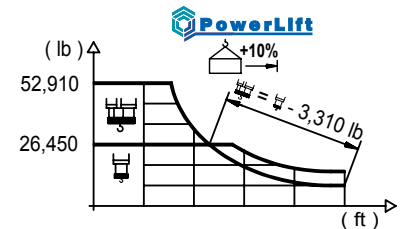


DIAGRAMA DE CARGAS POWERLIFT

Load chart PowerLift / Diagramme de charges PowerLift / Lastdiagramm PowerLift / Diagramma di carico PowerLift / Диаграмма распределения нагрузки PowerLift

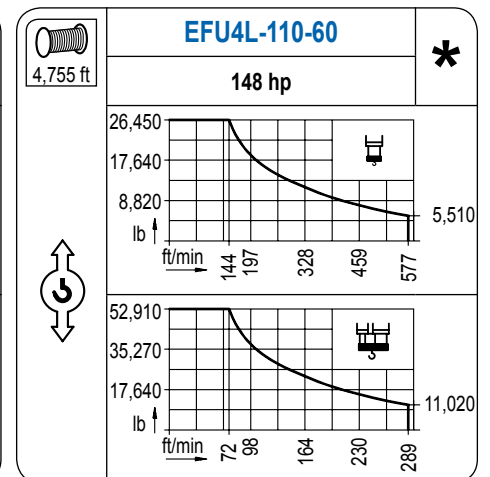
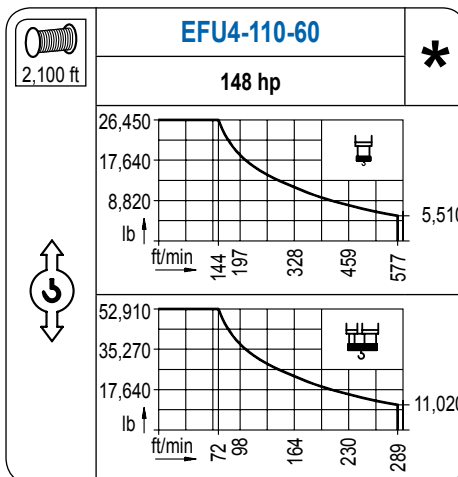
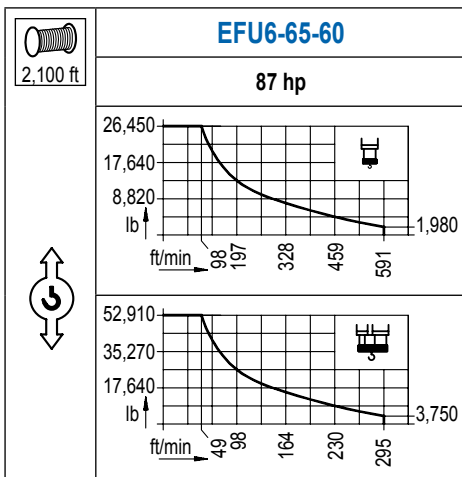
R (ft)	2,100 ft										4,755 ft					
262.5	91.5	98.4	105.0	111.5	118.1	124.7	131.2	147.6	159.8	179.8	196.9	213.3	229.7	246.1	262.5	ft
	52,910	48,520	44,880	41,680	38,860	36,330	34,080	29,360	26,450	26,450	23,830	21,710	19,900	18,340	16,970	lb
246.1	93.8	98.4	105.0	111.5	118.1	124.7	131.2	147.6	163.7	184.7	196.9	213.3	229.7	246.1		ft
	52,910	49,890	46,160	42,870	39,990	37,410	35,090	30,240	26,450	26,450	24,550	22,370	20,520	18,910		lb
229.7		98.4	105.0	111.5	118.1	124.7	131.2	147.6	164.0	172.2	194.6	213.3	229.7			ft
		52,910	48,960	45,500	42,460	39,740	37,300	32,200	28,150	26,450	26,450	23,780	21,820			lb
213.3			108.3	118.1	124.7	131.2	147.6	164.0	180.4	189.3		213.3				ft
			52,910	47,590	44,620	41,930	36,280	31,810	28,170	26,450	26,450	26,450				lb
196.9				119.1	124.7	131.2	147.6	164.0	180.4	194.2						ft
				52,910	50,060	47,090	40,870	35,930	31,900	29,100						lb
180.4						129.9	147.6	164.0	177.8							ft
						52,910	45,520	40,100	36,370							lb
164.0							130.9	147.6	161.4							ft
							52,910	45,830	41,220							lb
147.6								129.9	145.0							ft
								52,910	46,560							lb
131.2									128.6							ft
									52,910							lb



LC 2100

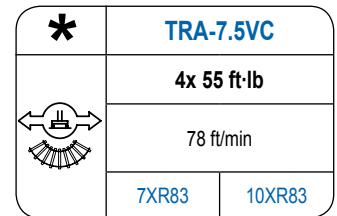
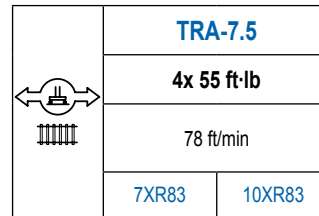
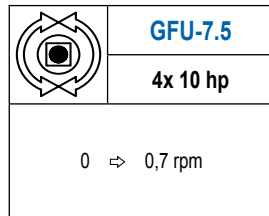
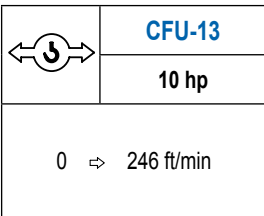
MECANISMOS

Mechanisms / Mécanismes / Antriebe / Meccanismi / Механизмы



MECANISMOS

Mechanisms / Mécanismes / Antriebe / Meccanismi / Механизмы



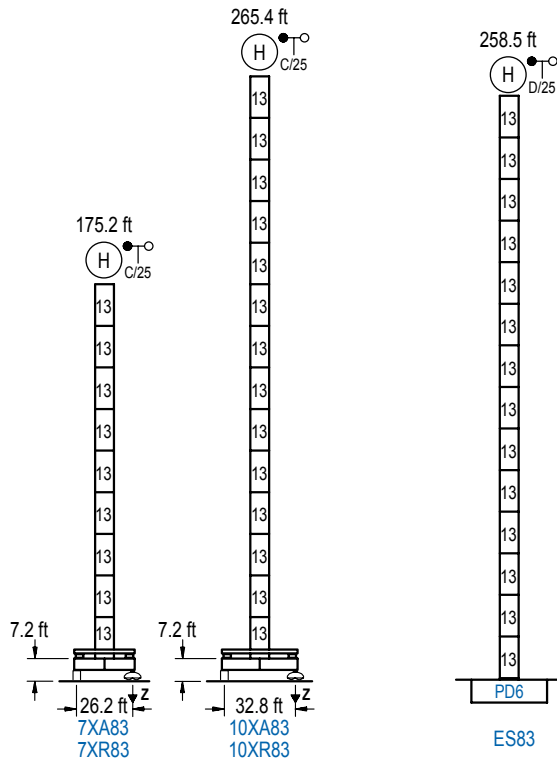
POTENCIA / POWER / PUISSANCE / LEISTUNG / POTENZA / МОЩНОСТЬ				Tensión de alimentación / Operating voltage / Tension de service / Betriebsspannung / Tensione di alimentazione / Напряжение источника питания	Generador / Generator / Générateur / Generator / Generatore / Генератор
Elevación / Hoist / Levage / Hub / Sollevamento / Тип механизма (подъем)	Carro / Trolley / Chariot / Laufkatze / Carrolo / Грузовая тележка	Giro / Slewing / Rotation / Drehbewegung / Rotazione / Поворот	Traslación / Travel / Translation / Verfahrbewegung / Traslazione / Ход		
EFU6-65-60	CFU-13	(4x) GFU-7.5	(4x) TRA-7.5	480 V	205 kVA
EFU4-110-60				3ph	270 kVA
EFU4L-110-60				60 Hz	270 kVA

Opcional / Optional / En option / Kaufoption / Opzionale / Опционально

ALTURAS BAJO GANCHO

Heights under hook / Hauteurs sous crochet / Hakenhöhen / Altezza sotto gancio / Высота под крюком

∅ 8.2 ft



n°	Ref.	∅	h
13	D36	8.2	18.0

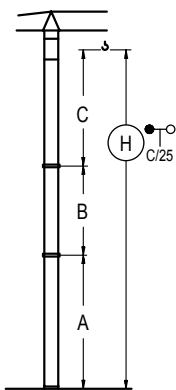
Z máx.	En servicio / In operation / En service / In Betrieb / In servizio / При работе	7XR83... 351 kip 10XR83... 379 kip
	Fuera de servicio / Out of service / Hors service / Ausser Betrieb / Fuori servizio / В стационарном состоянии	7XR83... 234 kip 10XR83... 357 kip

GRÚA ARRIOSTRADA

Braced crane / Grue à entretoisement / Abgespannter Kran / Gru ancorata / Нарастиваемый кран

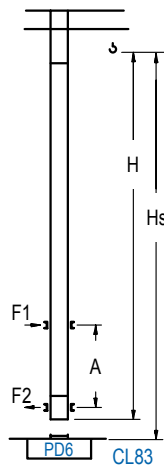
GRÚA TREPADORA

Internal climbing crane / Grue avec cage de télescopage intérieure / Kran mit klettern im Gebäude / Gru in rampante in cavedio / Кран с самоподъемом



	7XA6A3	10XA83
A max	133.5 133.5	223.8 133.5
B max	- 162.4 108.3	- 162.4 108.3
C max	204.1 204.1	204.1 204.1
H max	337.6 500.0	427.8 590.2

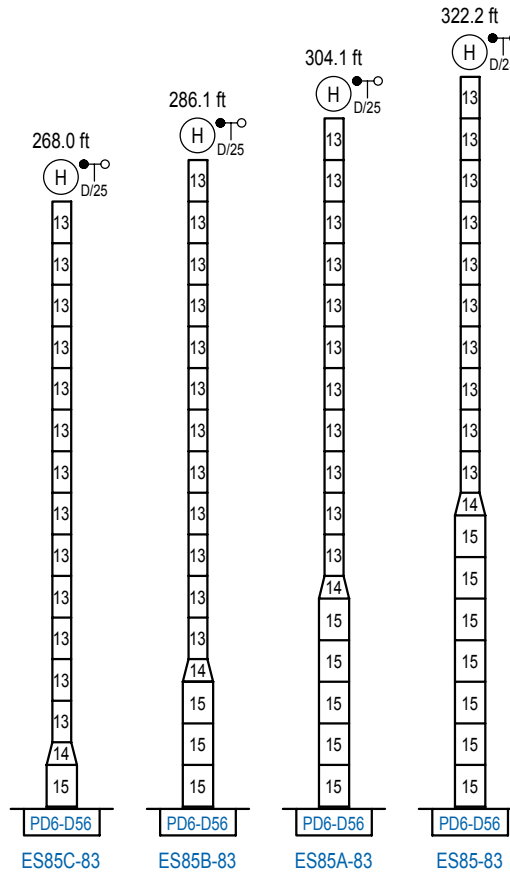
	ES83
A max	216.9 126.6
B max	- 162.4 108.3
C max	204.1 204.1
H max	420.9 583.3



H	Hs < 1,310 ft	A max (ft) / A min (ft)	
		A max (ft)	A min (ft)
198.5 ft 6x D36 + 4x D36A + CLD36	71.9	26.2	
180.4 ft 5x D36 + 4x D36A + CLD36	62.7	26.2	
162.4 ft 4x D36 + 4x D36A + CLD36	53.8	26.2	

n°	Ref.	∅	h
13	D36	8.2	18.0
22	D36A	8.2	18.0
19	CLD36	8.2	12.5

Otras zonas de viento, alturas superiores, arriostramientos o trepado interno consultar / Other wind zones, additional hook heights, tie frames or internal climbing on request / Autres zones de vent, des hauteurs supplémentaires, entretoisements ou grues avec cage de télescopage intérieure, sur demande / Andere Windzonen, weitere Hakenhöhen, Abspannungen zum Gebäude oder Klettern im Gebäude auf Anfrage / Per zone con velocità del vento particolari, altezze superiori, ancoraggi o rampante in cavedio, consultare il fabbricante / При других ветренных зонах, при большой высоте, привязках к зданию или наращивании крана внутри здания проконсультируйтесь с нами



	n°	Ref.	Ø	h	n°	Ref.	Ø	h
		13	D36	8.2	18.0	14	TD56D36	13.1
					15	D56	13.1	18.0

Otras zonas de viento o alturas superiores consultar / Other wind zones or additional hook heights on request / Autres zones de vent ou des hauteurs supplémentaires sur demande / Andere Windzonen oder weitere Hakenhöhen auf Anfrage / Per zone con velocità del vento particolari o altezze superiori consultare il fabbricante / При других ветренных зонах о при большой высоте проконсультируйтесь с нами