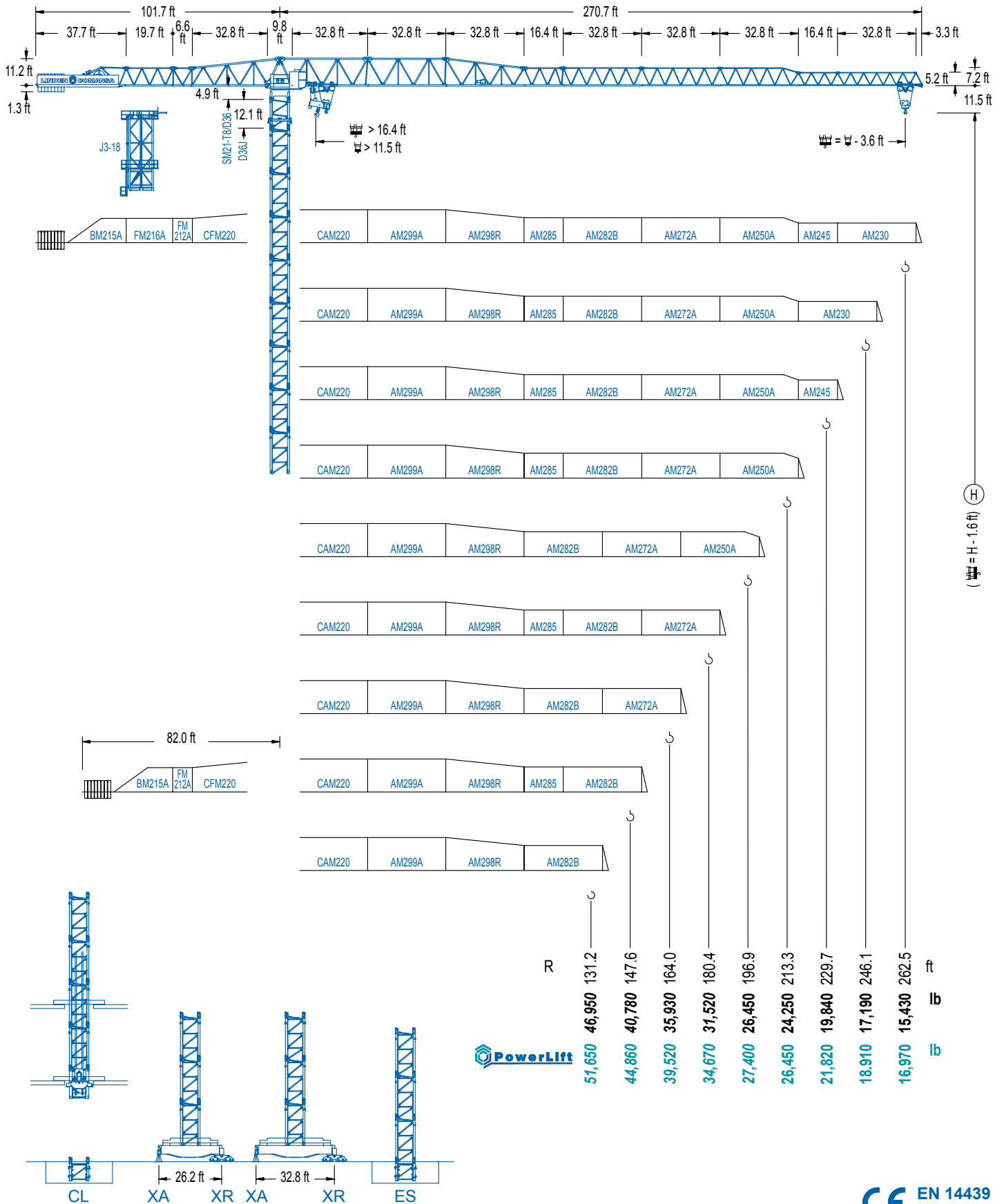


LC 2100

21 LC 750

79,360 lb



LC 2100

DIAGRAMA DE CARGAS

Load chart / Diagramme de charges / Lastdiagramm / Diagramma di carico / Диаграмма распределения нагрузки

R (ft)																	
262.5	60.0	68.9	75.5	82.0	91.9	105.0	118.1	131.2	143.7	166.3	180.4	196.9	213.3	229.7	246.1	262.5	ft
	79,360	67,260	60,200	54,360	47,240	39,920	34,300	29,850	26,450	26,450	24,090	21,750	19,790	18,140	16,680	15,430	lb
246.1	61.4	68.9	75.5	82.0	91.9	105.0	118.1	131.2	146.7	170.6	180.4	196.9	213.3	229.7	246.1		ft
	79,360	68,910	61,700	55,730	48,450	40,980	35,250	30,680	26,450	26,450	24,770	22,390	20,390	18,670	17,190		lb
229.7	64.0	68.9	75.5	82.0	91.9	105.0	118.1	131.2	147.6	153.5	179.5	196.9	213.3	229.7			ft
	79,360	72,720	65,160	58,880	51,250	43,400	37,390	32,620	27,880	26,450	26,450	23,760	21,640	19,840			lb
213.3		69.9	75.5	82.0	91.9	105.0	118.1	131.2	147.6	164.0	168.3	197.8	213.3				ft
		79,360	72,500	65,600	57,200	48,580	41,970	36,720	31,520	27,400	26,450	26,450	24,250				lb
196.9			76.4	82.0	91.9	105.0	118.1	131.2	147.6	164.0	185.0	196.9					ft
			79,360	73,120	63,880	54,380	47,090	41,310	35,580	31,040	26,450	26,450	24,500				lb
180.4				83.3	91.9	105.0	118.1	131.2	147.6	164.0	176.8						ft
				79,360	70,650	60,270	52,290	45,980	39,720	34,740	31,520						lb
164.0				83.7	91.9	105.0	118.1	131.2	147.6	160.4							ft
				79,360	70,980	60,560	52,550	46,200	39,920	35,930							lb
147.6				83.0	91.9	105.0	118.1	131.2	144.0								ft
				79,360	70,370	60,030	52,070	45,760	40,780								lb
131.2				82.3	91.9	105.0	118.1	127.6									ft
				79,360	69,770	59,500	51,630	46,950									lb

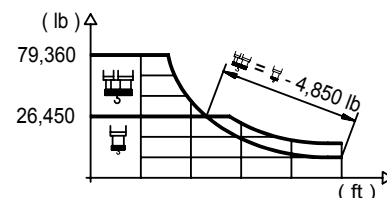
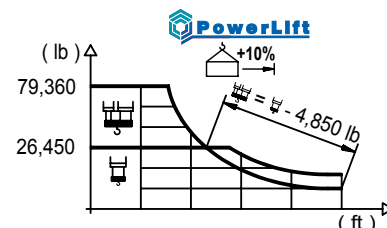


DIAGRAMA DE CARGAS POWERLIFT

Load chart PowerLift / Diagramme de charges PowerLift / Lastdiagramm PowerLift / Diagramma di carico PowerLift / Диаграмма распределения нагрузки PowerLift

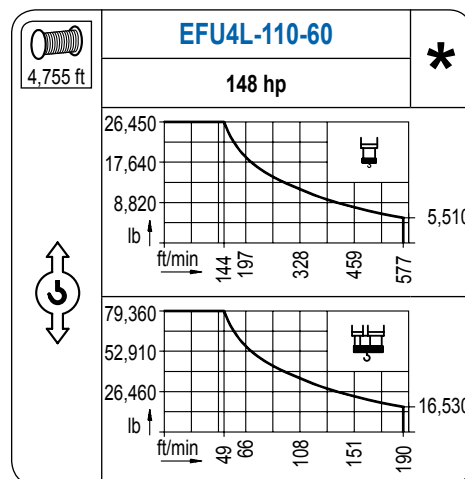
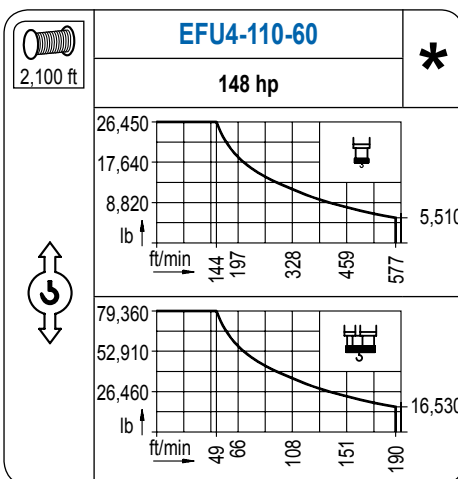
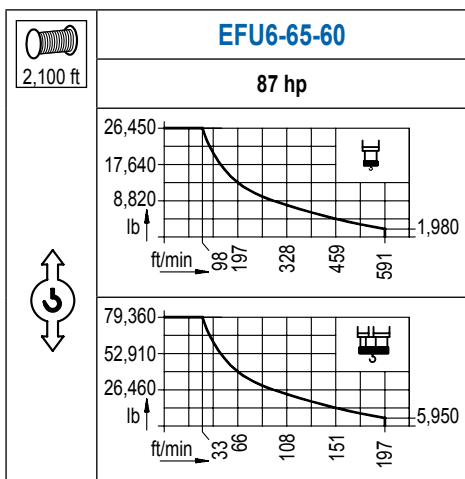
R (ft)																	
262.5	63.3	68.9	75.5	82.0	91.9	105.0	118.1	131.2	147.6	151.2	179.8	196.9	213.3	229.7	246.1	262.5	ft
	79,360	71,470	64,020	57,840	50,330	42,610	36,680	31,980	27,330	26,450	26,450	23,830	21,710	19,900	18,340	16,970	lb
246.1	64.6	68.9	75.5	82.0	91.9	105.0	118.1	131.2	147.6	154.9	184.7	196.9	213.3	229.7	246.1		ft
	79,360	73,500	65,870	59,540	51,830	43,910	37,830	33,020	28,240	26,450	26,450	24,550	22,370	20,520	18,910		lb
229.7		67.9	75.5	82.0	91.9	105.0	118.1	131.2	147.6	163.1	194.6	196.9	213.3	229.7			ft
		79,360	69,860	63,180	55,070	46,730	40,320	35,250	30,220	26,450	26,450	26,080	23,780	21,820			lb
213.3			74.5	82.0	91.9	105.0	118.1	131.2	147.6	164.0	177.2	179.8	213.3				ft
			79,360	70,760	61,770	52,550	45,480	39,850	34,300	29,890	26,960	26,450	26,450	24,500			lb
196.9				82.0	91.9	105.0	118.1	131.2	147.6	164.0	180.4	193.2					ft
				79,360	69,290	59,080	51,230	45,030	38,880	33,990	30,020	27,400					lb
180.4				89.6	105.0	118.1	131.2	147.6	164.0	176.8							ft
				79,360	65,690	57,090	50,260	43,510	38,130	34,670							lb
164.0				89.9	105.0	118.1	131.2	147.6	160.4								ft
				79,360	66,160	57,490	50,630	43,820	39,520								lb
147.6				89.6	105.0	118.1	131.2	144.0									ft
				79,360	65,690	57,090	50,260	44,860									lb
131.2				88.9	105.0	118.1	127.6										ft
				79,360	65,270	56,700	51,650										lb



LC 2100

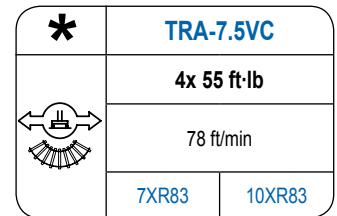
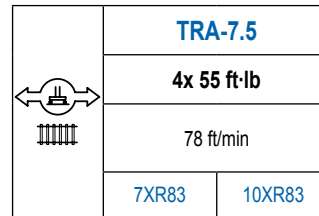
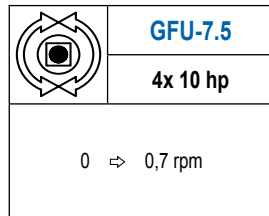
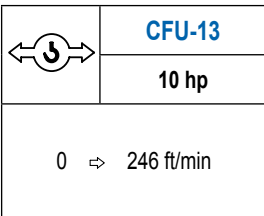
MECANISMOS

Mechanisms / Mécanismes / Antriebe / Meccanismi / Механизмы



MECANISMOS

Mechanisms / Mécanismes / Antriebe / Meccanismi / Механизмы



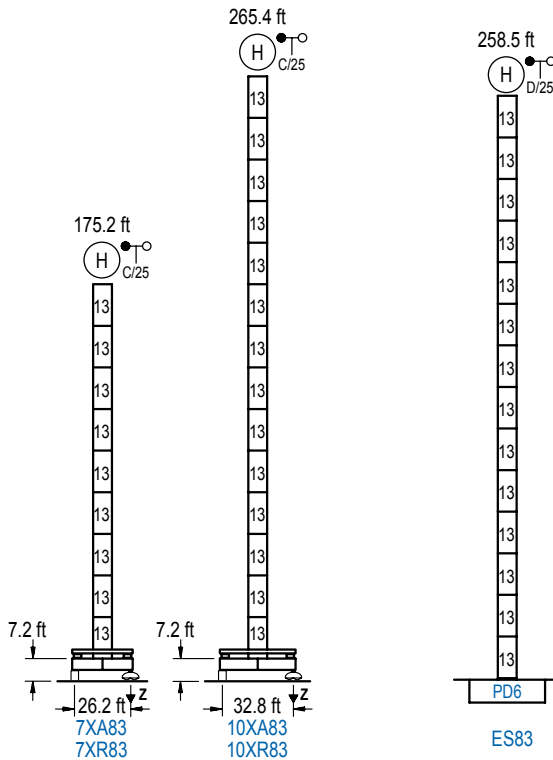
POTENCIA / POWER / PUISSANCE / LEISTUNG / POTENZA / МОЩНОСТЬ				Tensión de alimentación / Operating voltage / Tension de service / Betriebsspannung / Tensione di alimentazione / Напряжение источника питания	Generador / Generator / Générateur / Generator / Generatore / Генератор
Elevación / Hoist / Levage / Hub / Sollevamento / Тип механизма (подъем)	Carro / Trolley / Chariot / Laufkatze / Carrolo / Грузовая тележка	Giro / Slewing / Rotation / Drehbewegung / Rotazione / Поворот	Traslación / Travel / Translation / Verfahrbewegung / Traslazione / Ход		
EFU6-65-60	CFU-13	(4x) GFU-7.5	(4x) TRA-7.5	480 V	205 kVA
EFU4-110-60				3ph	270 kVA
EFU4L-110-60				60 Hz	270 kVA

Opcional / Optional / En option / Kaufoption / Opzionalmente / Опционально

ALTURAS BAJO GANCHO

Heights under hook / Hauteurs sous crochet / Hakenhöhen / Altezza sotto gancio / Высота под крюком

∅ 8.2 ft



n°	Ref.	∅	h
13	D36	8.2	18.0

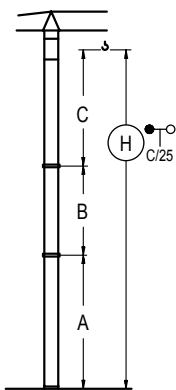
Z máx.	En servicio / In operation / En service / In Betrieb / In servizio / При работе	7XR83... 353 kip 10XR83.. 379 kip
	Fuera de servicio / Out of service / Hors service / Ausser Betrieb / Fuori servizio / В стационарном состоянии	7XR83... 234 kip 10XR83.. 344 kip

GRÚA ARRIOSTRADA

Braced crane / Grue à entretoisement / Abgespannter Kran / Gru ancorata / Нарастиваемый кран

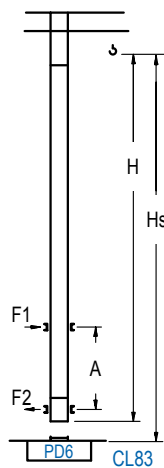
GRÚA TREPADORA

Internal climbing crane / Grue avec cage de télescopage intérieure / Kran mit klettern im Gebäude / Gru in rampante in cavedio / Кран с самоподъемом



	7XA6A3	10XA83
A max	133.5 133.5	223.8 133.5
B max	- 162.4 108.3	- 162.4 108.3
C max	204.1 204.1	204.1 204.1
H max	337.6 500.0	427.8 590.2

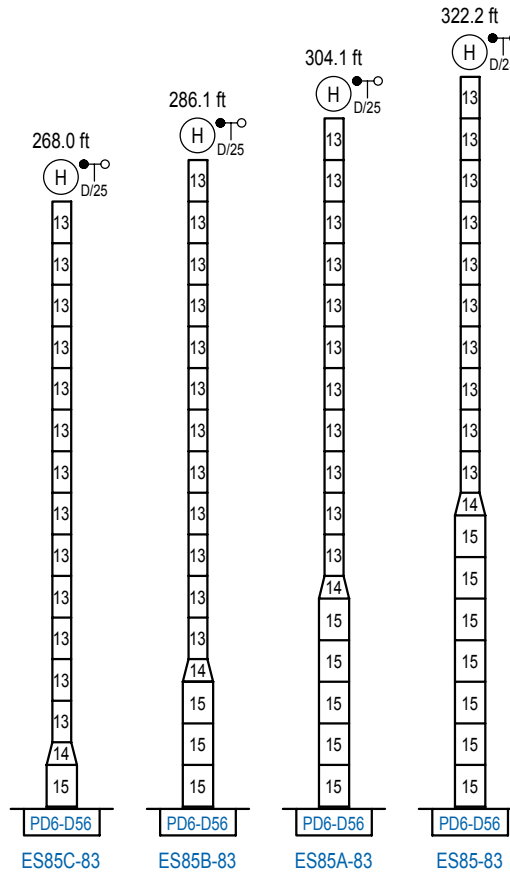
	ES83
A max	216.9 126.6
B max	- 162.4 108.3
C max	204.1 204.1
H max	420.9 583.3



H	Hs < 1,310 ft	A max A min (ft)	
		A max (ft)	A min (ft)
198.5 ft 6x D36 + 4x D36A + CLD36	71.9	26.2	
180.4 ft 5x D36 + 4x D36A + CLD36	62.7	26.2	
162.4 ft 4x D36 + 4x D36A + CLD36	53.8	26.2	

n°	Ref.	∅	h
13	D36	8.2	18.0
22	D36A	8.2	18.0
19	CLD36	8.2	12.5

Otras zonas de viento, alturas superiores, arriostramientos o trepado interno consultar / Other wind zones, additional hook heights, tie frames or internal climbing on request / Autres zones de vent, des hauteurs supplémentaires, entretoisements ou grues avec cage de télescopage intérieure, sur demande / Andere Windzonen, weitere Hakenhöhen, Abspannungen zum Gebäude oder Klettern im Gebäude auf Anfrage / Per zone con velocità del vento particolari, altezze superiori, ancoraggi o rampante in cavedio, consultare il fabbricante / При других ветренных зонах, при большой высоте, привязках к зданию или наращивании крана внутри здания проконсультируйтесь с нами



	n°	Ref.	Ø	h	n°	Ref.	Ø	h
		13	D36	8.2	18.0	14	TD56D36	13.1
					15	D56	13.1	18.0

Otras zonas de viento o alturas superiores consultar / Other wind zones or additional hook heights on request / Autres zones de vent ou des hauteurs supplémentaires sur demande / Andere Windzonen oder weitere Hakenhöhen auf Anfrage / Per zone con velocità del vento particolari o altezze superiori consultare il fabbricante / При других ветренных зонах о при большой высоте проконсультируйтесь с нами

LC 2100