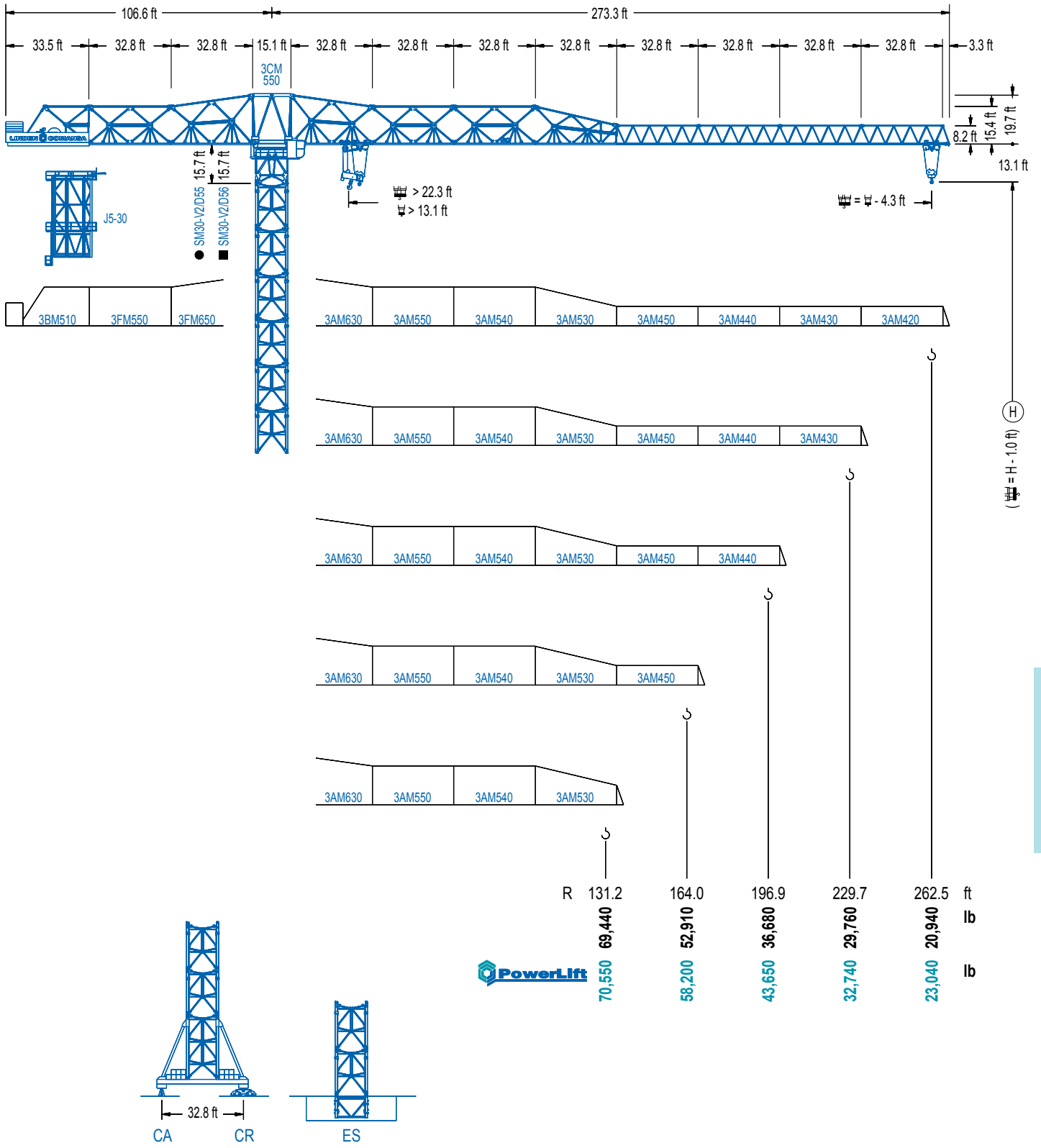


**LC 3000**

**30 LC 1100**



**141,090 lb**

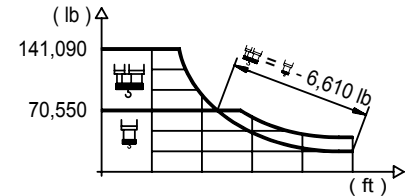


**LC 3000**

## DIAGRAMA DE CARGAS



Load chart / Diagramme de charges / Lastdiagramm / Diagramma di carico / Диаграмма распределения нагрузки

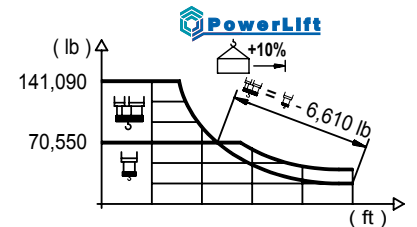
R (ft)																				
262.5	52.8	82.0	91.5	98.4	114.8	124.7	131.2	147.6	157.5	164.0	180.4	190.3	196.9	213.3	223.1	229.7	246.1	255.9	262.5	ft
	141,090	81,280	70,550	70,550	58,910	53,440	50,260	43,630	40,320	38,360	34,080	31,900	30,560	27,580	26,010	25,040	22,860	21,670	20,940	lb
229.7	59.4	82.0	91.9	103.3	112.2	124.7	131.2	147.6	157.5	164.0	180.4	190.3	196.9	213.3	223.1	229.7	ft			
	141,090	94,330	81,810	70,550	70,550	62,350	58,710	51,080	47,310	45,040	40,150	37,610	36,090	32,670	30,860	29,760	lb			
196.9	63.3	82.0	91.9	98.4	110.6	120.4	131.2	147.6	157.5	164.0	180.4	190.3	196.9	ft						
	141,090	102,450	89,000	81,640	70,550	70,550	64,200	55,930	51,830	49,380	44,070	41,360	39,680	lb						
164.0	66.3	82.0	91.9	98.4	114.8	116.1	128.3	147.6	157.5	164.0	ft									
	141,090	108,690	94,510	86,750	71,450	70,550	70,550	59,850	55,510	52,910	lb									
131.2	66.3	82.0	91.9	98.4	116.1	129.6	131.2	ft												
	141,090	108,710	94,530	86,770	70,550	70,550	69,440	lb												



## DIAGRAMA DE CARGAS POWERLIFT

Load chart PowerLift / Diagramme de charges PowerLift / Lastdiagramm PowerLift / Diagramma di carico PowerLift / Диаграмма распределения нагрузки PowerLift

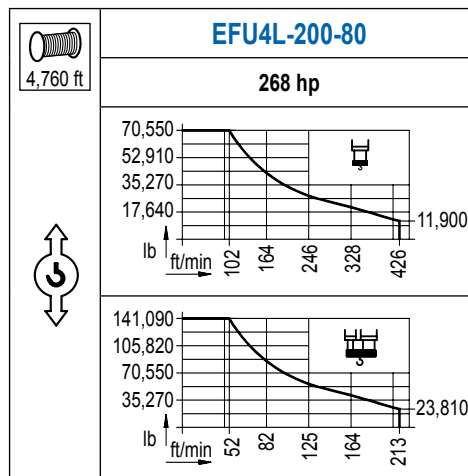
R (ft)																				
262.5	55.1	82.0	91.9	95.8	105.6	124.7	131.2	147.6	157.5	164.0	180.4	190.3	196.9	213.3	223.1	229.7	246.1	255.9	262.5	ft
	141,090	86,050	74,490	70,550	70,550	57,980	54,560	47,420	43,870	41,760	37,170	34,810	33,380	30,180	28,480	27,450	25,090	23,830	23,040	lb
229.7	62.7	82.0	91.9	99.4	120.7	124.7	131.2	147.6	157.5	164.0	180.4	190.3	196.9	213.3	223.1	229.7	ft			
	141,090	101,040	87,740	70,550	70,550	67,970	64,020	55,780	51,700	49,250	43,960	41,230	39,570	35,890	33,950	32,740	lb			
196.9	67.3	82.0	91.9	98.4	114.8	117.8	130.9	147.6	157.5	164.0	180.4	190.3	196.9	ft						
	141,090	110,580	96,210	88,320	72,800	70,550	70,550	61,290	56,830	54,190	48,410	45,460	43,650	lb						
164.0	70.9	82.0	91.9	98.4	114.8	124.3	138.8	147.6	157.5	164.0	ft									
	141,090	118,060	102,820	94,470	78,000	70,550	70,550	65,760	61,020	58,200	lb									
131.2	71.2	82.0	91.9	98.4	114.8	124.7	131.2	ft												
	141,090	118,720	103,400	95,020	78,460	70,550	70,550	lb												



LC 3000

## MECANISMOS

Mechanisms / Mécanismes / Antriebe / Meccanismi / Механизмы



## MECANISMOS

Mechanisms / Mécanismes / Antriebe / Meccanismi / Механизмы

	<b>CFU-18</b>
	<b>24 hp</b>
0 ⇔ 295 ft/min	

	<b>GFU-15</b>
	<b>4x 20 hp</b>
0 ⇔ 0,7 rpm	

	<b>TRA-10</b>
	<b>4x 74 ft-lb</b>
78 ft/min	
10XR65-A	10CR85

	<b>TRA-10VC</b>
	<b>4x 74 ft-lb</b>
78 ft/min	
10XR65-A	10CR85

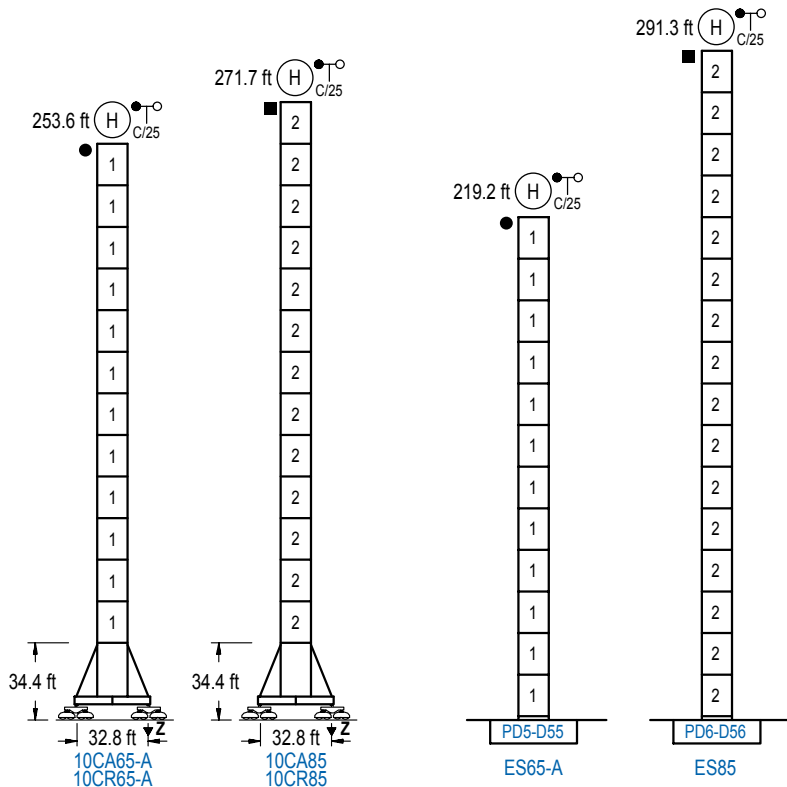
POTENCIA / POWER / PUISSANCE / LEISTUNG / POTENZA / МОЩНОСТЬ				Tensión de alimentación / Operating voltage / Tension de service / Betriebsspannung / Tensione di alimentazione / Напряжение источника питания	Generador / Generator / Générateur / Generator / Generatore / Генератор
Elevación / Hoist / Levage / Hub / Sollevamento / Тип механизма (подъем)	Carro / Trolley / Chariot / Laufkatze / Carrello / Грузовая тележка	Giro / Slewing / Rotation / Drehbewegung / Rotazione / Поворот	Traslación / Travel / Translation / Verfahrbewegung / Traslazione / Ход	480 V 3ph 60 Hz	475 kVA
EFU4L-200-80	CFU-18	(4x) GFU-15	(4x) TRA-10		

Opcional / Optional / En option / Kaufoption / Opzionale / Опционально
<b>*</b>

## ALTURAS BAJO GANCHO

Heights under hook / Hauteurs sous crochet / Hakenhöhen / Altezza sotto gancio / Высота под крюком

∅ 13.1 ft

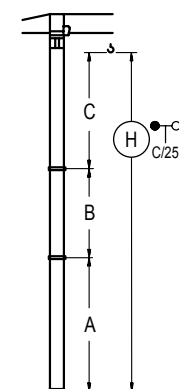


n°	Ref.	∅	h
1	D55	13.1	18.0
2	D56	13.1	18.0

Z máx.	En servicio / In operation / En service / In Betrieb / In servizio / При работе	10CR65-A...500 kip 10CR85 .....510 kip
	Fuera de servicio / Out of service / Hors service / Ausser Betrieb / Fuori servizio / В стационарном состоянии	10CR65-A...467 kip 10CR85 .....683 kip

## GRÚA ARRIOSTRADA

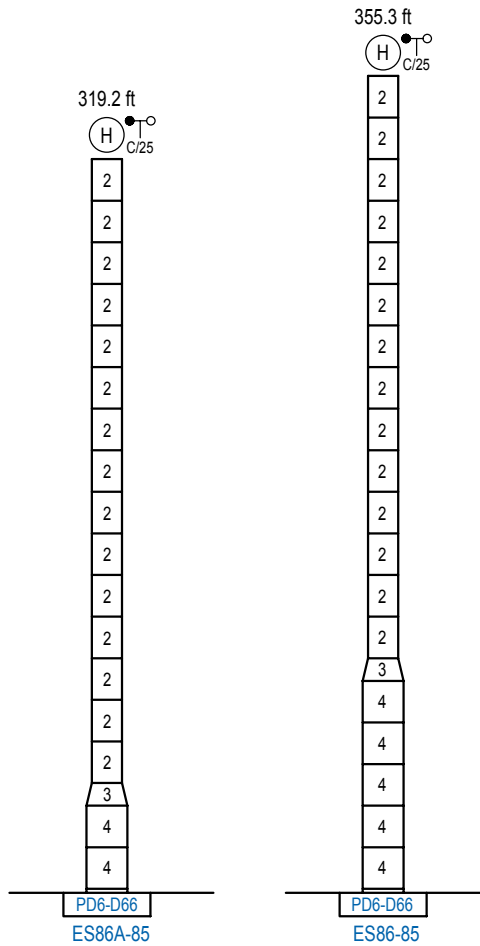
Braced crane / Grue à entretoisement / Abgespannter Kran / Gru ancorata / Нарастиваемый кран



	10CA65-A	10CA85
A max	196.9	214.9
A min	106.6	106.6
B max	108.3	162.4
B min	72.2	72.2
C max	165.0	219.2
H max	470.1	596.5

	ES65-A	ES85
A max	162.4	234.6
A min	72.2	108.3
B max	108.3	162.4
B min	72.2	72.2
C max	165.0	219.2
H max	435.7	616.1

Otras zonas de viento o alturas superiores consultar / Other wind zones or additional hook heights on request / Autres zones de vent ou des hauteurs supplémentaires sur demande / Andere Windzonen oder weitere Hakenhöhen auf Anfrage / Per zone con velocità del vento particolari o altezze superiori consultare il fabbricante / При других ветренных зонах о при большой высоте проконсультируйтесь с нами



	n°	Ref.	∅	h	n°	Ref.	∅	h
		2	D56	13.1	18.0	3	TD66D56	17.7
					4	D66	17.7	18.0

Otras zonas de viento o alturas superiores consultar / Other wind zones or additional hook heights on request / Autres zones de vent ou des hauteurs supplémentaires sur demande / Andere Windzonen oder weitere Hakenhöhen auf Anfrage / Per zone con velocità del vento particolari o altezze superiori consultare il fabbricante / При других ветренных зонах о при большой высоте проконсультируйтесь с нами

LC 3000



**Construcciones Metálicas COMANSA S. A.**

Tel.: (+34) 948 335 020 / Fax: (+34) 948 330 810 / E-mail: info@comansa.com  
 Polígono Urbizkain, C/ta. Aoiz N°1 31620 Huarte (Navarra)- SPAIN

<b>DS.1539.03.IA 11/16 30LC1100/141,090 Ib</b>