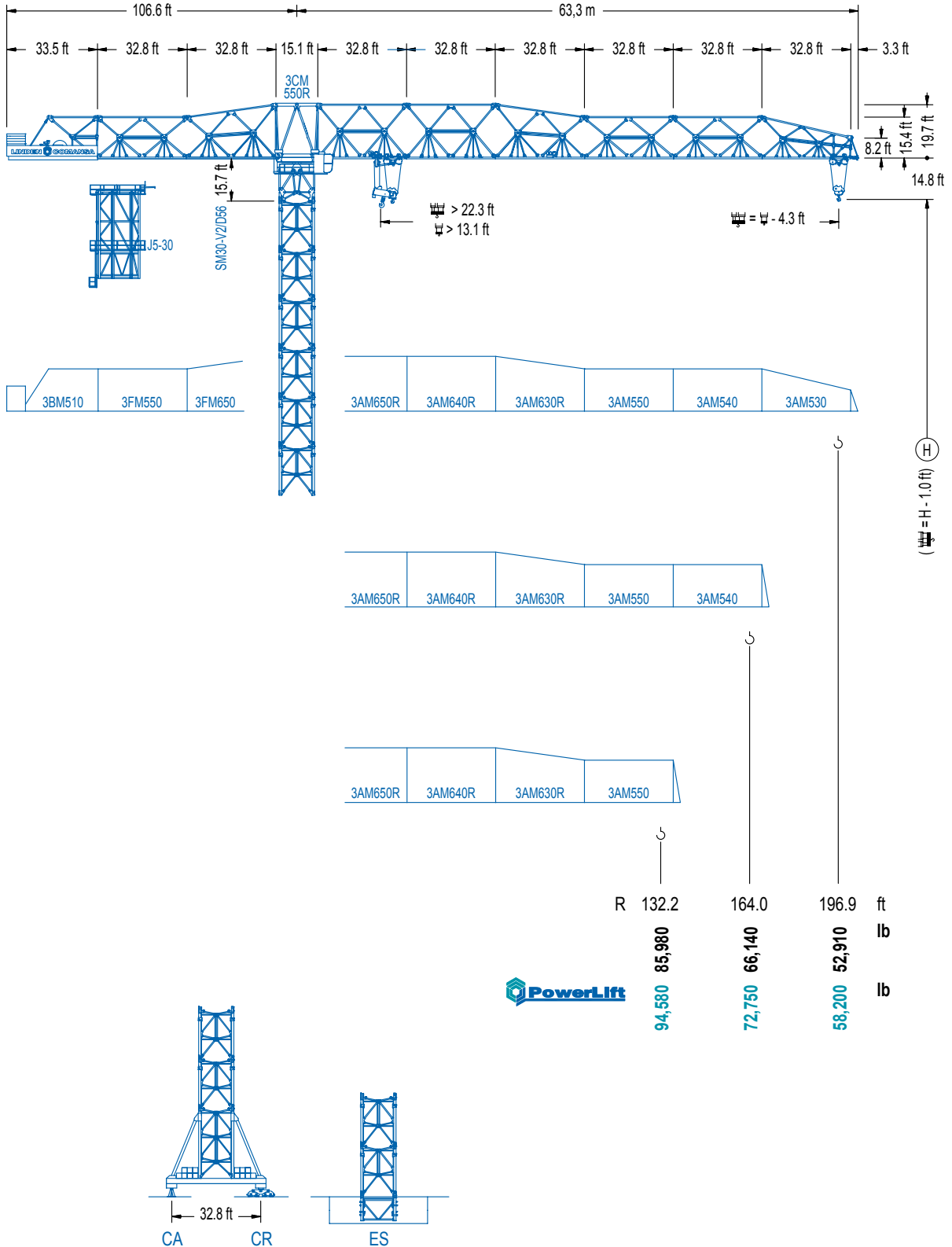


**LC 3000**

**30 LC 1450**

**198,410 lb**

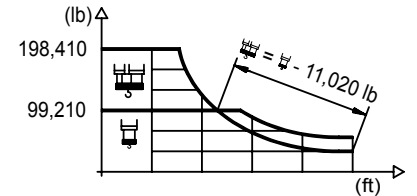


**LC 3000**

## DIAGRAMA DE CARGAS

Load chart / Diagramme de charges / Lastdiagramm / Diagramma di carico / Диаграмма распределения нагрузки

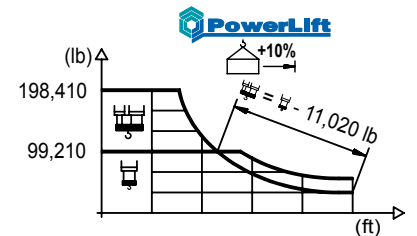
R (ft)																			
196.9	59.1	65.6	72.2	82.0	91.9	98.4	103.7	115.8	124.7	131.2	137.8	147.6	157.5	164.0	170.6	180.4	190.3	196.9	ft
	198,410	174,470	155,050	132,210	114,640	105,010	99,210	99,210	91,160	85,870	81,090	74,760	69,250	65,960	62,940	58,820	55,160	52,910	lb
164.0	59.1	65.6	72.2	82.0	91.9	98.4	102.7	116.1	124.7	131.2	137.8	147.6	157.5	164.0					ft
	198,410	173,960	154,590	131,810	114,290	104,670	99,210	99,210	91,400	86,090	81,310	74,960	69,440	66,140					lb
131.2	58.4	65.6	72.2	82.0	91.9	98.4	101.7	116.1	124.7	131.2									ft
	198,410	172,160	152,960	130,400	113,030	103,530	99,210	99,210	91,290	85,980									lb



## DIAGRAMA DE CARGAS POWERLIFT

Load chart PowerLift / Diagramme de charges PowerLift / Lastdiagramm PowerLift / Diagramma di carico PowerLift / Диаграмма распределения нагрузки PowerLift

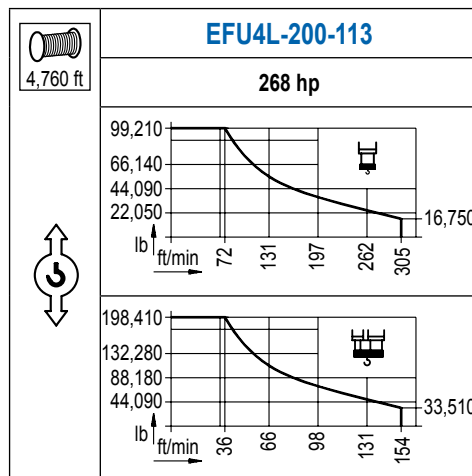
R (ft)																		
196.9	63.6	72.2	82.0	91.9	98.4	105.0	111.2	125.3	131.2	137.8	147.6	157.5	164.0	170.6	180.4	190.3	196.9	ft
	198,410	169,930	145,170	126,100	115,650	106,590	99,210	99,210	93,940	88,760	81,880	75,930	72,350	69,070	64,620	60,630	58,200	lb
164.0	63.6	72.2	82.0	91.9	98.4	105.0	111.2	125.7	131.2	137.8	147.6	157.5	164.0					ft
	198,410	169,890	145,130	126,080	115,630	106,570	99,210	99,210	94,450	89,240	82,340	76,350	72,750					lb
131.2	63.3	72.2	82.0	91.9	98.4	105.0	110.2	126.0	131.2									ft
	198,410	168,590	144,000	125,070	114,680	105,710	99,210	99,210	94,580									lb



LC 3000


## MECANISMOS

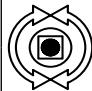
Mechanisms / Mécanismes / Antriebe / Meccanismi / Механизмы

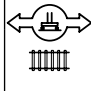


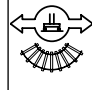
## MECANISMOS

Mechanisms / Mécanismes / Antriebe / Meccanismi / Механизмы

	<b>CFU-18</b>
	<b>24 hp</b>
0 ⇔ 210 ft/min	

	<b>GFU-15</b>
	<b>4x 20 hp</b>
0 ⇔ 0,7 rpm	

	<b>TRA-10</b>
	<b>4x 74 ft-lb</b>
	78 ft/min
	10CR85

	<b>TRA-10VC</b>
	<b>4x 74 ft-lb</b>
	78 ft/min
	10CR85

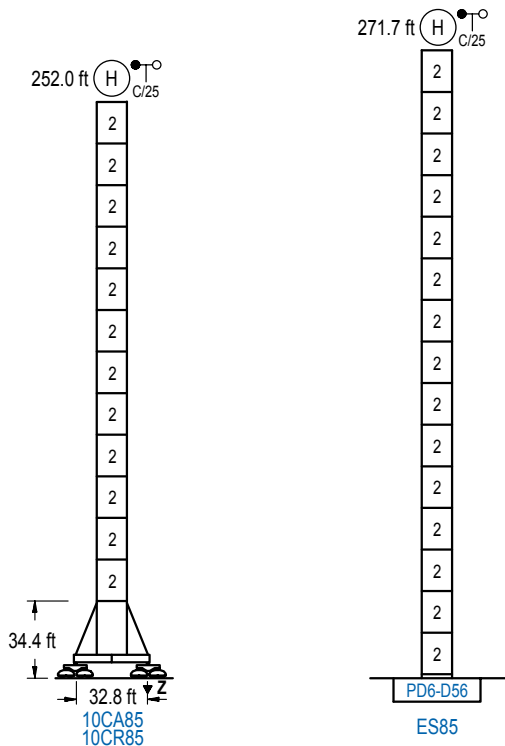
POTENCIA / POWER / PUISSANCE / LEISTUNG / POTENZA / МОЩНОСТЬ				Tensión de alimentación / Operating voltage / Tension de service / Betriebsspannung / Tensione di alimentazione / Напряжение источника питания	Generador / Generator / Générateur / Generator / Generatore / Генератор
Elevación / Hoist / Levage / Hub / Sollevamento / Тип механизма (подъем)	Carro / Trolley / Chariot / Laufkatze / Carrolo / Грузовая тележка	Giro / Slewing / Rotation / Drehbewegung / Rotazione / Поворот	Traslación / Travel / Translation / Verfahrbewegung / Traslazione / Ход		
EFU4L-200-113	CFU-18	(4x) GFU-15	(4x) TRA-10	480 V 3ph 60 Hz	475 kVA

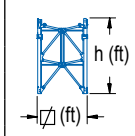
Opcional / Optional / En option / Kaufoption / Opzionale / Опционально
<b>*</b>

## ALTURAS BAJO GANCHO

Heights under hook / Hauteurs sous crochet / Hakenhöhen / Altezza sotto gancio / Высота под крюком

∅ 13.1 ft

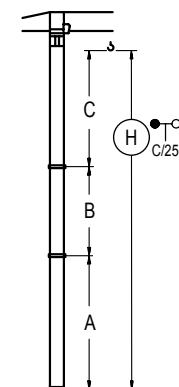


	n°	Ref.	∅	h
	2	D56	13.1	18.0

<b>Z máx.</b>	En servicio / In operation / En service / In Betrieb / In servizio / При работе	10CR85 ...624 kip
	Fuera de servicio / Out of service / Hors service / Ausser Betrieb / Fuori servizio / В стационарном состоянии	10CR85 ...448 kip

## GRÚA ARRIOSTRADA

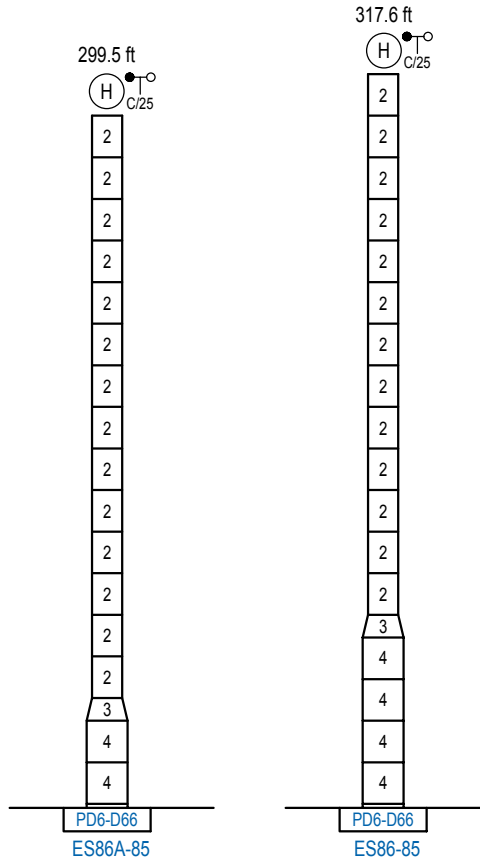
Braced crane / Grue à entretoisement / Abgespannter Kran / Gru ancorata / Нарастиваемый кран

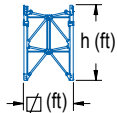


	10CA85
A max	196.9
B max	- 162.4
C max	217.5 217.5
H max	414.4 576.8

	ES85
A max	216.5
B max	- 162.4
C max	217.5 217.5
H max	434.1 596.5

Otras zonas de viento o alturas superiores consultar / Other wind zones or additional hook heights on request / Autres zones de vent ou des hauteurs supplémentaires sur demande / Andere Windzonen oder weitere Hakenhöhen auf Anfrage / Per zone con velocità del vento particolari o altezze superiori consultare il fabbricante / При других ветренных зонах о при большой высоте проконсультируйтесь с нами



	n°	Ref.	∅	h	n°	Ref.	∅	h
		2	D56	13.1	18.0	3	TD66D56	17.7
					4	D66	17.7	18.0

Otras zonas de viento o alturas superiores consultar / Other wind zones or additional hook heights on request / Autres zones de vent ou des hauteurs supplémentaires sur demande / Andere Windzonen oder weitere Hakenhöhen auf Anfrage / Per zone con velocità del vento particolari o altezze superiori consultare il fabbricante / При других ветренных зонах о при большой высоте проконсультируйтесь с нами

LC 3000



**Construcciones Metálicas COMANSA S. A.**

Tel.: (+34) 948 335 020 / Fax: (+34) 948 330 810 / E-mail: info@comansa.com  
 Polígono Urbizkain, Crt. Aoiz N°1 31620 Huarte (Navarra)- SPAIN

<b>3220-10248.IA 11/16 30LC1450/198,410 Ib</b>

Reserva de modificaciones. Subject to modifications. Modifications réservées. Konstruktionsänderungen vorbehalten. Il Fabbricante si riserva la facoltà di apportare modifiche. Возможны изменения.