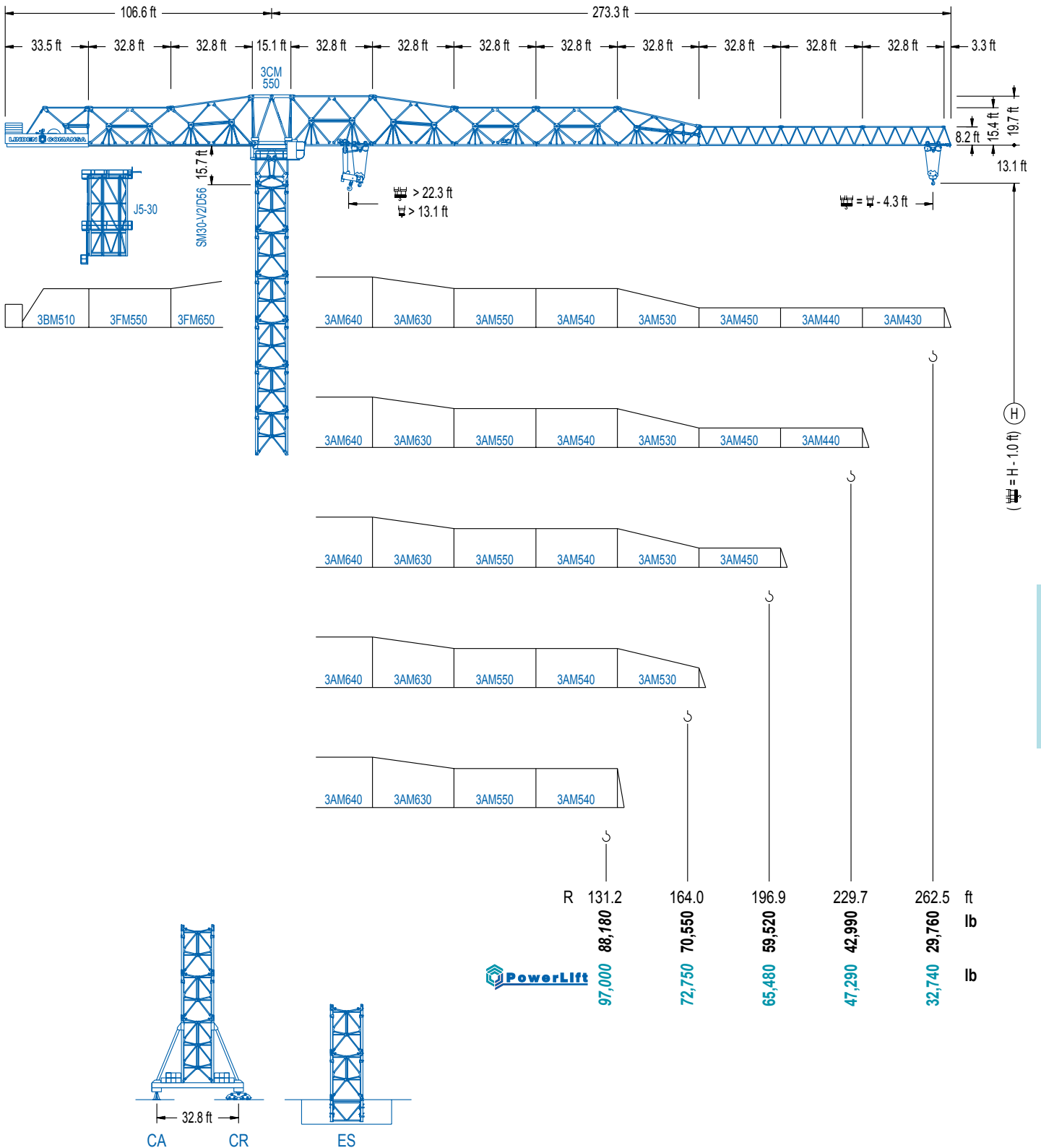


LC 3000

30 LC 1450



141,090 lb

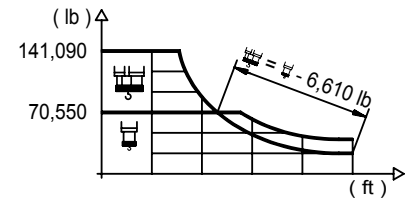


LC 3000

## DIAGRAMA DE CARGAS



Load chart / Diagramme de charges / Lastdiagramm / Diagramma di carico / Диаграмма распределения нагрузки

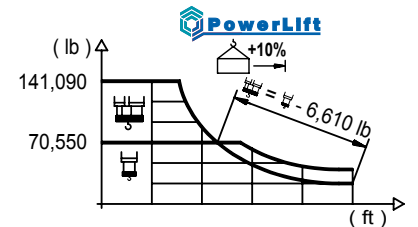
R (ft)																				
262.5	67.3	82.0	91.9	98.4	117.8	127.6	131.2	147.6	157.5	164.0	180.4	190.3	196.9	213.3	223.1	229.7	246.1	255.9	262.5	ft
	141,090	110,630	96,230	88,360	70,550	70,550	68,340	59,610	55,270	52,690	47,070	44,180	42,420	38,490	36,440	35,160	32,280	30,730	29,760	lb
229.7		77.8	91.9	98.4	114.8	124.7	137.5	150.3	157.5	164.0	180.4	190.3	196.9	213.3	223.1	229.7				ft
		141,090	115,700	106,420	88,160	79,630	70,550	70,550	66,840	63,780	57,100	53,680	51,590	46,960	44,510	42,990				lb
196.9		86.9	91.9	98.4	114.8	124.7	131.2	147.6	153.9	169.6	180.4	190.3	196.9							ft
		141,090	132,210	121,760	101,170	91,560	85,980	74,340	70,550	70,550	65,790	61,910	59,520							lb
164.0		86.0	91.9	98.4	114.8	124.7	131.2	147.6	151.9	164.0										ft
		141,090	130,120	119,800	99,520	90,040	84,550	73,060	70,550	70,550										lb
131.2		86.0	91.9	98.4	114.8	124.7	127.0													ft
		141,090	130,290	119,970	99,670	90,170	88,180													lb



## DIAGRAMA DE CARGAS POWERLIFT

Load chart PowerLift / Diagramme de charges PowerLift / Lastdiagramm PowerLift / Diagramma di carico PowerLift / Диаграмма распределения нагрузки PowerLift

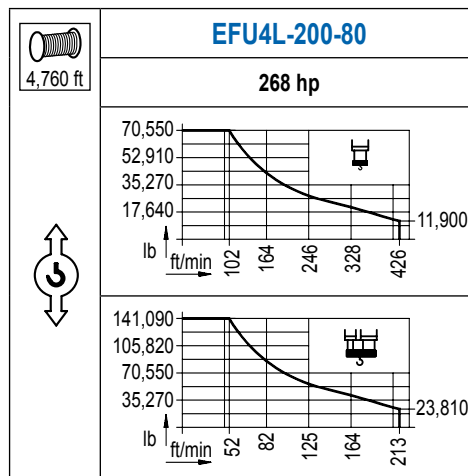
R (ft)																				
262.5	70.9	82.0	91.9	98.4	114.8	124.7	137.5	147.6	157.5	164.0	180.4	190.3	196.9	213.3	223.1	229.7	246.1	255.9	262.5	ft
	141,090	118,320	103,040	94,690	78,180	70,550	70,550	64,990	60,320	57,520	51,430	48,320	46,410	42,170	39,950	38,580	35,450	33,770	32,740	lb
229.7		83.0	91.9	98.4	114.8	124.7	131.2	144.4	146.7	162.7	180.4	190.3	196.9	213.3	223.1	229.7				ft
		141,090	125,000	115,080	95,500	86,350	81,060	71,980	70,550	70,550	62,610	58,910	56,640	51,590	48,940	47,290				lb
196.9		93.2	98.4	114.8	124.7	131.2	147.6	157.5	165.4	184.4	190.3	196.9								ft
		141,090	132,450	110,250	99,890	93,870	81,310	75,070	70,550	70,550	68,060	65,480								lb
164.0		92.5	98.4	114.8	124.7	131.2	147.6	157.5	159.8											ft
		141,090	130,820	108,860	98,610	92,680	80,250	74,070	72,750											lb
131.2		92.8	98.4	114.8	124.7	127.0														ft
		141,090	131,530	109,480	99,160	97,000														lb



LC 3000


## MECANISMOS

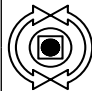
Mechanisms / Mécanismes / Antriebe / Meccanismi / Механизмы

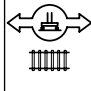


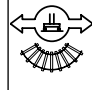
## MECANISMOS

Mechanisms / Mécanismes / Antriebe / Meccanismi / Механизмы

	<b>CFU-18</b>
	<b>24 hp</b>
0 ⇔ 295 ft/min	

	<b>GFU-15</b>
	<b>4x 20 hp</b>
0 ⇔ 0,7 rpm	

	<b>TRA-10</b>
	<b>4x 74 ft-lb</b>
0 ⇔ 78 ft/min	
10CR85	

	<b>TRA-10VC</b>
	<b>4x 74 ft-lb</b>
0 ⇔ 78 ft/min	
10CR85	

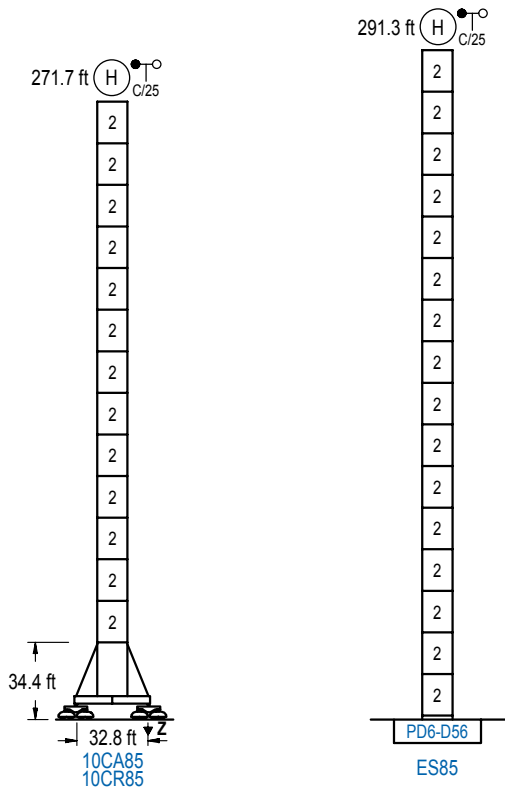
POTENCIA / POWER / PUISSANCE / LEISTUNG / POTENZA / МОЩНОСТЬ				Tensión de alimentación / Operating voltage / Tension de service / Betriebsspannung / Tensione di alimentazione / Напряжение источника питания	Generador / Generator / Générateur / Generator / Generatore / Генератор
Elevación / Hoist / Levage / Hub / Sollevamento / Тип механизма (подъем)	Carro / Trolley / Chariot / Laufkatze / Carrolo / Грузовая тележка	Giro / Slewing / Rotation / Drehbewegung / Rotazione / Поворот	Traslación / Travel / Translation / Verfahrbewegung / Traslazione / Ход		
EFU4L-200-80	CFU-18	(4x) GFU-15	(4x) TRA-10	480 V 3ph 60 Hz	475 kVA

Opcional / Optional / En option / Kaufoption / Opzionale / Опционально
<b>*</b>

## ALTURAS BAJO GANCHO

Heights under hook / Hauteurs sous crochet / Hakenhöhen / Altezza sotto gancio / Высота под крюком

∅ 13.1 ft

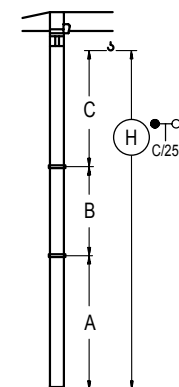


n°	Ref.	∅	h
2	D56	13.1	18.0

<b>Z máx.</b>	En servicio / In operation / En service / In Betrieb / In servizio / При работе	10CR85 ...595 kip
	Fuera de servicio / Out of service / Hors service / Ausser Betrieb / Fuori servizio / В стационарном состоянии	10CR85 ...710 kip

## GRÚA ARRIOSTRADA

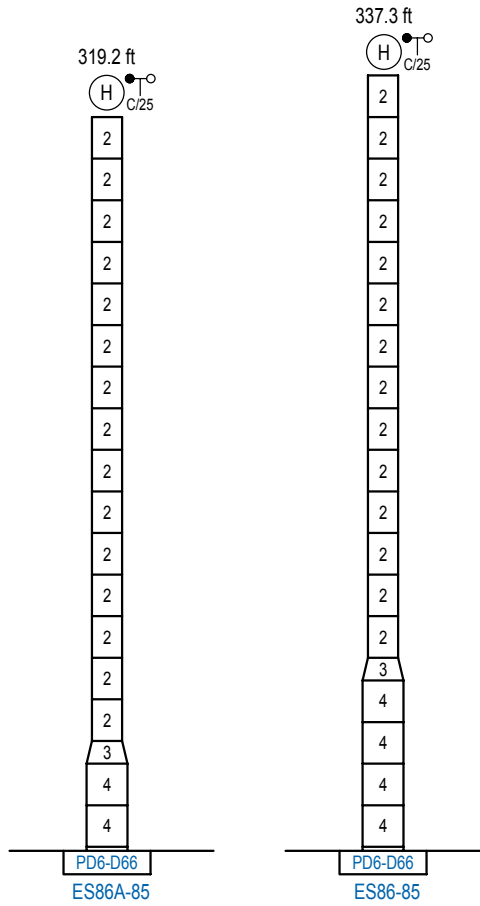
Braced crane / Grue à entretoisement / Abgespannter Kran / Gru ancorata / Нарастиваемый кран



	10CA85
A max	215.9
B max	- 162.4
C max	219.2 219.2
H max	434.1 596.5

	ES85
A max	234.6
B max	- 162.4
C max	219.2 219.2
H max	453.7 616.1

Otras zonas de viento o alturas superiores consultar / Other wind zones or additional hook heights on request / Autres zones de vent ou des hauteurs supplémentaires sur demande / Andere Windzonen oder weitere Hakenhöhen auf Anfrage / Per zone con velocità del vento particolari o altezze superiori consultare il fabbricante / При других ветренных зонах о при большой высоте проконсультируйтесь с нами



n°	Ref.	∅	h	n°	Ref.	∅	h
2	D56	13.1	18.0	3	TD66D56	17.7	9.8
				4	D66	17.7	18.0

Otras zonas de viento o alturas superiores consultar / Other wind zones or additional hook heights on request / Autres zones de vent ou des hauteurs supplémentaires sur demande / Andere Windzonen oder weitere Hakenhöhen auf Anfrage / Per zone con velocità del vento particolari o altezze superiori consultare il fabbricante / При других ветренных зонах о при большой высоте проконсультируйтесь с нами

LC 3000



**Construcciones Metálicas COMANSA S. A.**

Tel.: (34) 948 335 020 / Fax: (34) 948 330 810  
e-mail: info@comansa.com / www.comansa.com

Polígono Urbizkain  
E-31620 HUARTE-PAMPLONA.- SPAIN

