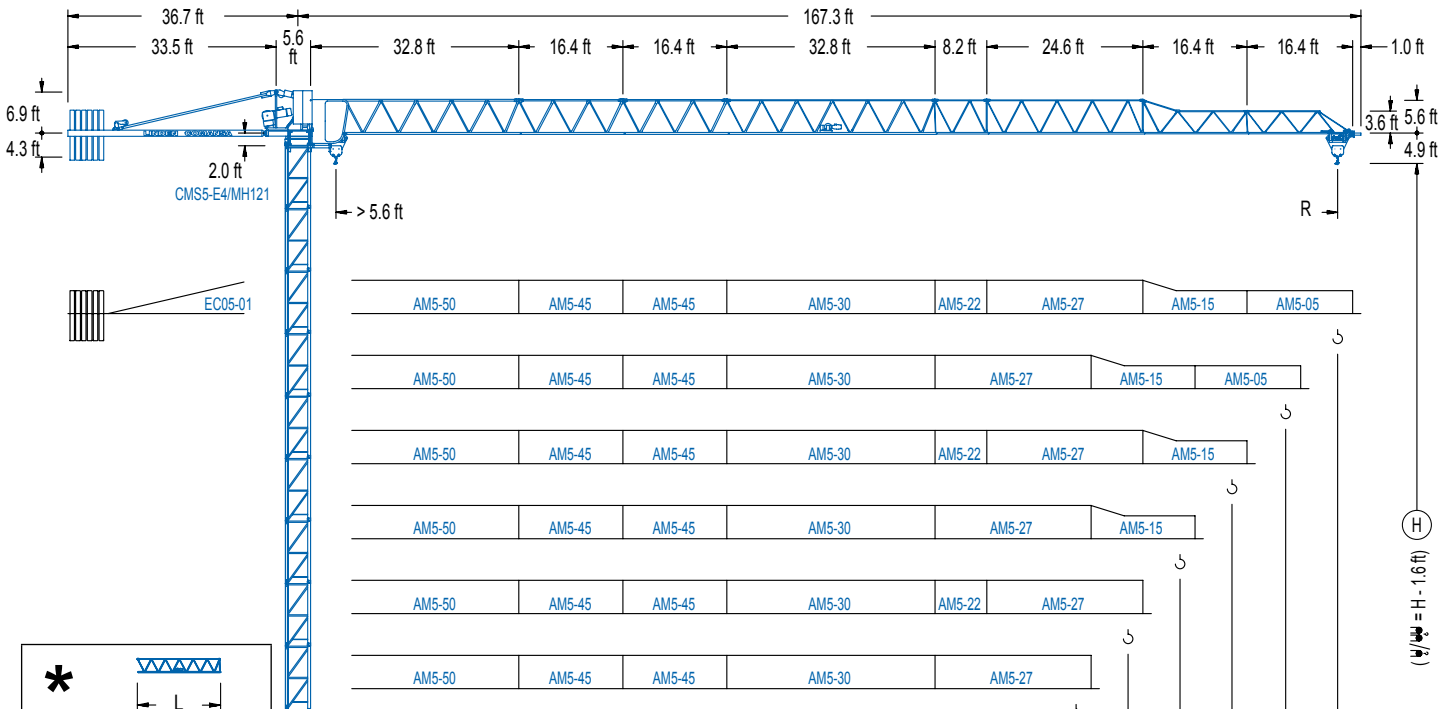



LC 500

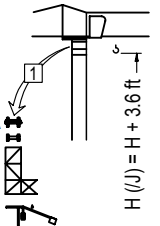
5 LC 5010

11,020 lb



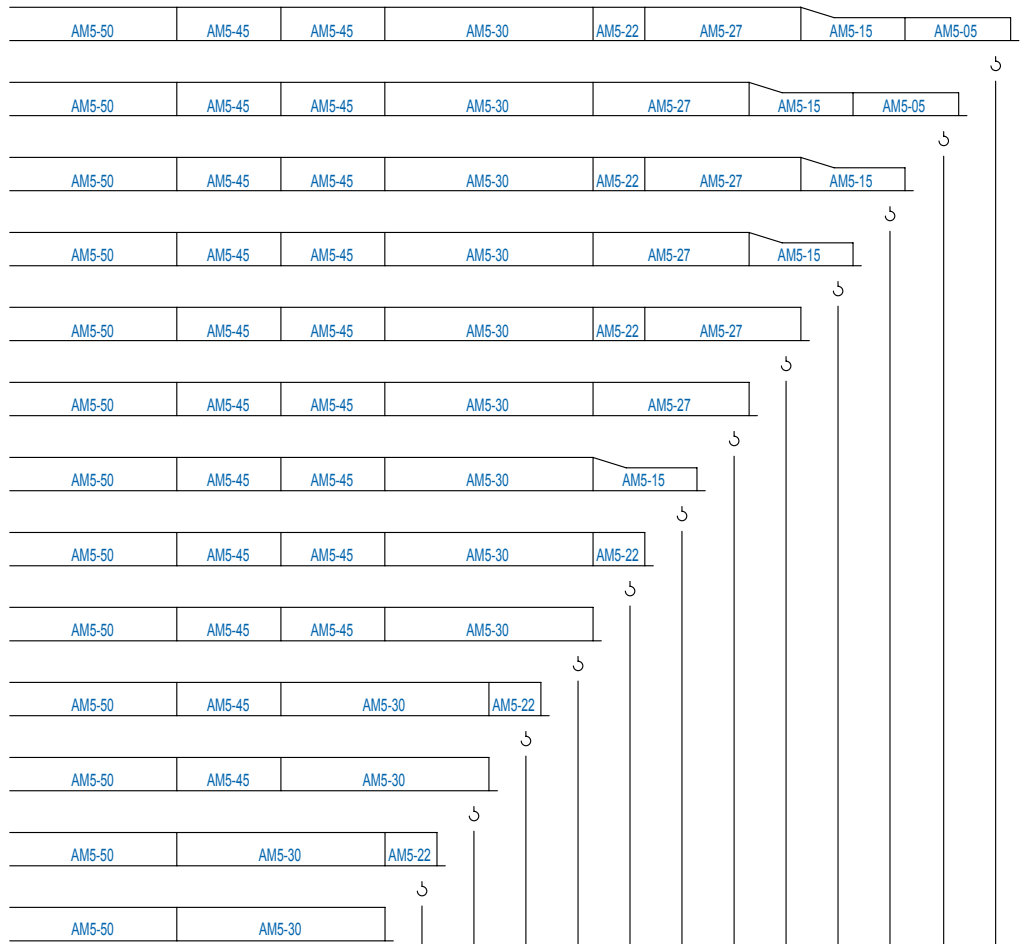
*  L

AM5-50 = AM5-55T + AM5-55D
 AM5-30 = AM5-35T + AM5-35D

*  H (U) = H + 3.6 ft

MJ12A
 MJ12
 JT1
 P11
 GH

1 Montaje inicial / Initial erection
 Montage initial / Erstmontage
 Montaggio iniziale
 Первоначальный монтаж



R	65.6	73.8	82.0	90.2	98.4	106.6	114.8	123.0	131.2	139.4	147.6	155.8	164.0	ft
PowerLift	5,510	5,510	5,510	5,510	5,510	5,340	4,850	4,230	3,880	3,640	2,910	2,670	2,430	lb
PowerLift	9,080	8,270	7,030	6,310	5,690	5,090	4,610	3,990	3,640	3,400	2,670	2,430	2,180	lb

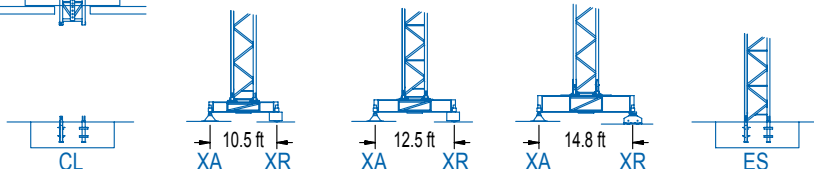
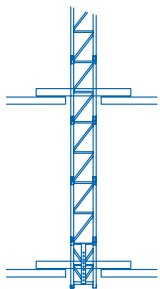
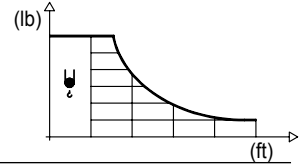


DIAGRAMA DE CARGAS

Load chart / Diagramme de charges / Lastdiagramm / Diagramma di carico / Диаграмма распределения нагрузки

R (ft)	ψ	RCmax (ft)	32.8	41.0	49.2	57.4	65.6	73.8	82.0	90.2	98.4	106.6	114.8	123.0	131.2	139.4	147.6	155.8	164.0	↔ (ft) ↓ (lb)
164.0	74.8							5,510	4,980	4,450	4,030	3,680	3,370	3,110	2,890	2,690	2,510	2,360	2,200	
155.8	76.8							5,510	5,110	4,610	4,170	3,790	3,480	3,220	2,980	2,780	2,580	2,420		
147.6	78.1							5,510	5,220	4,690	4,250	3,880	3,550	3,280	3,040	2,820	2,640			
139.4	88.9								5,510	5,420	4,910	4,500	4,140	3,810	3,550	3,310				
131.2	88.6								5,510	5,400	480	4,470	4,120	3,790	3,530					
123.0	89.9								5,510	5,490	4,960	4,540	4,170	3,860						
114.8	94.2									5,510	5,250	4,780	4,410							
106.6	95.1									5,510	5,310	4,850								
98.4	96.8									5,510	5,400									
90.2	90.2									5,510										
82.0	82.0								5,510											
73.8	73.8						5,510													
65.6	65.6					5,510														



R (ft)	ψ/ψ	RCmax (ft)	32.8	41.0	49.2	57.4	65.6	73.8	82.0	90.2	98.4	106.6	114.8	123.0	131.2	139.4	147.6	155.8	164.0	↔ (ft) ↓ (lb)
164.0	48.9	11,020	10,780	8,750	7,340	6,280	5,470	4,830	4,300	3,880	3,500	3,200	2,930	2,690	2,490	2,290	2,140	1,980		
155.8	50.2		11,020	8,990	7,540	6,460	5,620	4,960	4,430	3,990	3,610	3,280	3,020	2,780	2,560	2,380	2,200			
147.6	50.9		11,020	9,150	7,670	6,570	5,730	5,070	4,520	4,060	3,680	3,350	3,090	2,840	2,620	2,420				
139.4	57.4		11,020	10,540	8,840	7,600	6,630	5,860	5,250	4,740	4,300	3,920	3,610	3,330	3,090					
131.2	57.1		11,020	10,540	8,770	7,540	6,590	5,840	5,220	4,690	4,280	3,900	3,590	3,310						
123.0	57.7		11,020	10,580	8,900	7,650	6,680	5,910	5,290	4,760	4,340	3,970	3,640							
114.8	60.7			11,020	9,370	8,040	7,030	6,240	5,580	5,030	4,580	4,190								
106.6	61.0			11,020	9,460	8,130	7,120	6,300	5,640	5,090	4,630									
98.4	62.0			11,020	9,610	8,270	7,230	6,410	5,730	5,180										
90.2	62.0			11,020	9,610	8,270	7,230	6,390	5,730											
82.0	62.0			11,020	9,590	8,240	7,210	6,390												
73.8	62.3			11,020	9,680	8,310	7,270													
65.6	62.0			11,020	9,610	8,270														

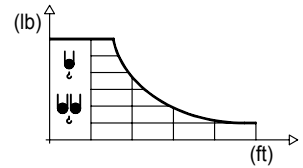
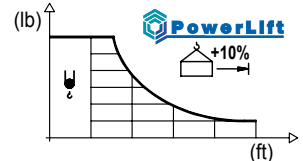


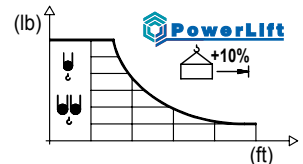
DIAGRAMA DE CARGAS POWERLIFT

Load chart PowerLift / Diagramme de charges PowerLift / Lastdiagramm PowerLift / Diagramma di carico PowerLift / Диаграмма распределения нагрузки PowerLift

R (ft)	ψ	RCmax (ft)	32.8	41.0	49.2	57.4	65.6	73.8	82.0	90.2	98.4	106.6	114.8	123.0	131.2	139.4	147.6	155.8	164.0	↔ (ft) ↓ (lb)
164.0	54.3							5,510	5,420	4,870	4,410	4,030	3,700	3,420	3,170	2,950	2,760	2,580	2,430	
155.8	55.8								5,510	5,030	4,540	4,140	3,810	3,530	3,260	3,040	2,840	2,670		
147.6	56.8								5,510	5,140	4,650	4,230	3,900	3,590	3,350	3,110	2,910			
139.4	64.9								5,510	5,400	4,940	4,540	4,190	3,900	3,640					
131.2	64.6								5,510	5,380	4,920	4,520	4,190	3,880						
123.0	65.4								5,510	5,450	4,980	4,590	4,230							
114.8	68.8									5,510	5,270	4,850								
106.6	69.6									5,510	5,340									
98.4	66.1									5,510										
90.2	60.6								5,510											
82.0	55.1							5,510												
73.8	49.6						5,510													
65.6	44.1					5,510														



R (ft)	ψ/ψ	RCmax (ft)	32.8	41.0	49.2	57.4	65.6	73.8	82.0	90.2	98.4	106.6	114.8	123.0	131.2	139.4	147.6	155.8	164.0	↔ (ft) ↓ (lb)
164.0	28.8	11,020	9,440	7,910	6,790	5,930	5,220	4,670	4,210	3,810	3,480	3,200	2,930	2,710	2,510	2,340	2,180			
155.8	29.6		11,020	9,720	8,160	6,990	6,110	5,400	4,830	4,340	3,950	3,590	3,310	3,040	2,800	2,600	2,430			
147.6	30.1		11,020	9,900	8,310	7,140	6,220	5,510	4,920	4,430	4,010	3,680	3,370	3,110	2,870	2,670				
139.4	34.1		11,020	9,610	8,270	7,230	6,390	5,730	5,180	4,720	4,300	3,970	3,660	3,400						
131.2	34.0		11,020	9,570	8,220	7,190	6,370	5,690	5,140	4,670	4,280	3,950	3,640							
123.0	34.3		11,020	9,680	8,310	7,280	6,440	5,780	5,200	4,740	4,340	3,990								
114.8	36.1		11,020	10,230	8,800	7,690	6,830	6,110	5,530	5,030	4,610									
106.6	36.4		11,020	10,340	8,910	7,780	6,900	6,190	5,600	5,090										
98.4	36.9		11,020	10,490	9,040	7,910	7,010	6,280	5,690											
90.2	37.0		11,020	10,520	9,060	7,940	7,030	6,310												
82.0	37.0		11,020	10,520	9,060	7,940	7,030													
73.8	37.3		11,020	10,630	9,150	8,000														
65.6	37.1			11,020	9,080															



MECANISMOS

Mechanisms / Mécanismes / Antriebe / Meccanismi / Механизмы

ES3-18-12
820 ft
29 hp

	I	II	III
ft/min	32	126	252
lb	5,510	5,510	2,870

	I	II	III
ft/min	16	63	126
lb	11,020	11,020	5,730

ES3-13-12
740 ft
21 hp

	I	II	III
ft/min	24	94	189
lb	5,510	2,500	2,870

	I	II	III
ft/min	12	47	94
lb	11,020	11,020	5,730

EFU2-18-12
820 ft
24 hp

ft/min	lb
5,510	2,200
4,410	
3,310	
2,200	
ft/min	138 164 197 243

ft/min	lb
11,020	4,410
8,820	
6,610	
4,410	
ft/min	88 88 121

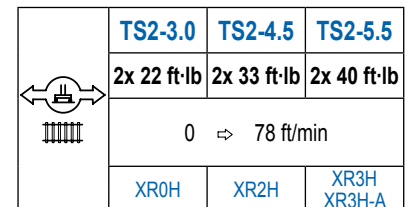
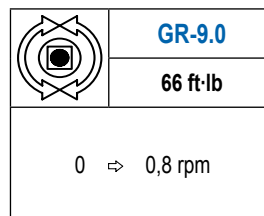
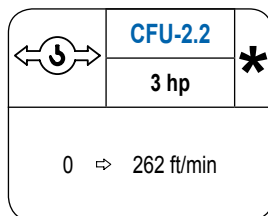
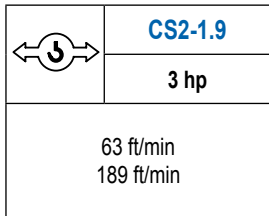
EFU2-11-12
740 ft
15 hp

ft/min	lb
5,510	2,200
4,410	
3,310	
2,200	
ft/min	79 88 131 164 190

ft/min	lb
11,020	4,410
8,820	
6,610	
4,410	
ft/min	88 49 88 82 95

MECANISMOS

Mechanisms / Mécanismes / Antriebe / Meccanismi / Механизмы



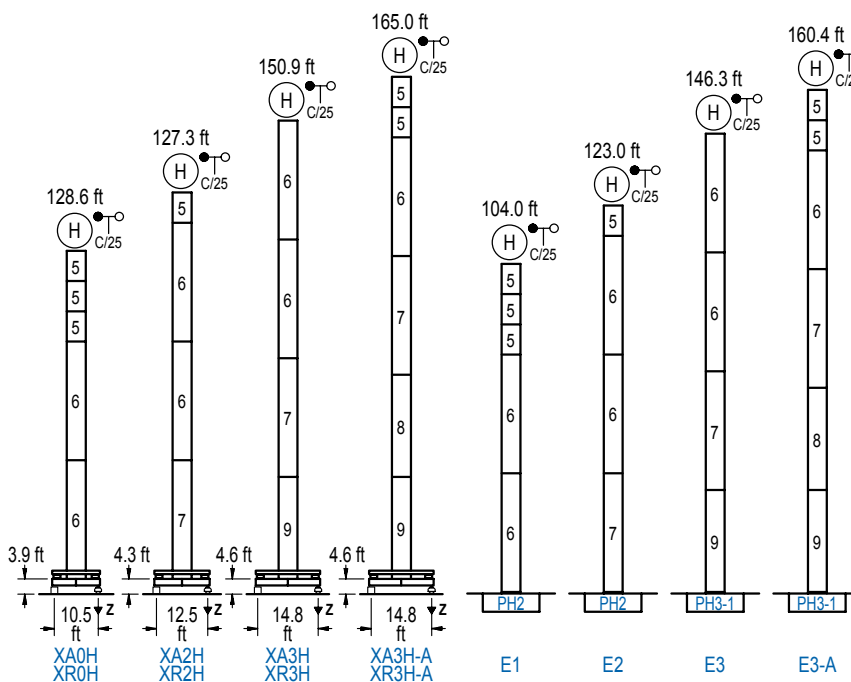
POTENCIA / POWER / PUISSANCE / LEISTUNG / POTENZA / МОЩНОСТЬ				Tensión de alimentación / Operating voltage / Tension de service / Betriebsspannung / Tensione di alimentazione / Напряжение источника питания	Generador / Generator / Générateur / Generator / Generatore / Генератор
Elevación / Hoist / Levage / Hub / Sollevamento / Тип механизма (подъем)	Carro / Trolley / Chariot / Laufkatze / Carrello / Грузовая тележка	Giro / Slewing / Rotation / Drehbewegung / Rotazione / Поворот	Traslación / Travel / Translation / Verfahrbewegung / Traslazione / Ход	480 V 3ph 60 Hz	107 kVA 90 kVA 60 kVA 48 kVA
ES3-18-12	CS2-1.9	GR-9.0	(2x) TS2-3.0		
ES3-13-12			(2x) TS2-4.5		
EFU2-18-12	CFU-2.2		(2x) TS2-5.5		
EFU2-11-12					

Opcional / Optional / En option / Kaufoption / Opzionale / Опционально
*

ALTURAS BAJO GANCHO

Heights under hook / Hauteurs sous crochet / Hakenhöhen / Altezza sotto gancio / Высота под крюком

∅ 3.9 ft



n°	Ref.	∅	h
5	MH121	3.9	9.8
6	MH124-1	3.9	38.7
7	MH124A	3.9	38.7
8	MT123A	3.9	33.1
9	MT123	3.9	33.1

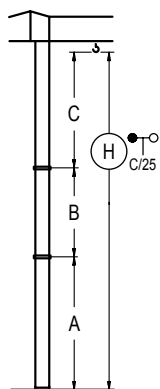
MH124-1 = 4x MH121 - 0.7 ft

H = H + 0.7 ft
 H = H
 H = H
 H = H - 0.7 ft

Z máx.	En servicio / In operation / En service / In Betrieb / In servizio / При работе	XR0H..... 95 kip XR2H..... 93 kip XR3H..... 95 kip XR3H-A... 106 kip
	Fuera de servicio / Out of service / Hors service / Ausser Betrieb / Fuori servizio / В стационарном состоянии	XR0H..... 93 kip XR2H..... 108 kip XR3H..... 141 kip XR3H-A... 168 kip

GRÚA ARRIOSTRADA

Braced crane / Grue à entretoisement / Abgespannter Kran / Gru ancorata / Нарастиваемый кран

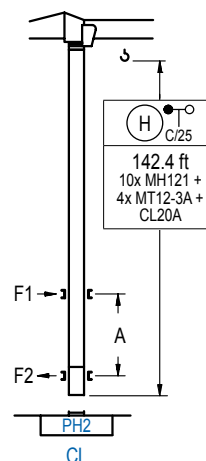


	XA0H	XA2H	XA3H	XA3H-A
A max	91.2	111.2	134.8	148.3
B max	- 68.9	- 68.9	- 68.9	- 68.9
C max	89.2	89.2	89.2	89.2
H max	180.4	249.3	200.5	269.4
	224.1	1293.0	237.5	306.4

	E1	E2	E3	E3-A
A max	87.3	107.0	130.2	143.7
B max	- 68.9	- 68.9	- 68.9	- 68.9
C max	89.2	89.2	89.2	89.2
H max	176.5	245.4	196.2	265.1
	219.5	288.4	232.9	301.8

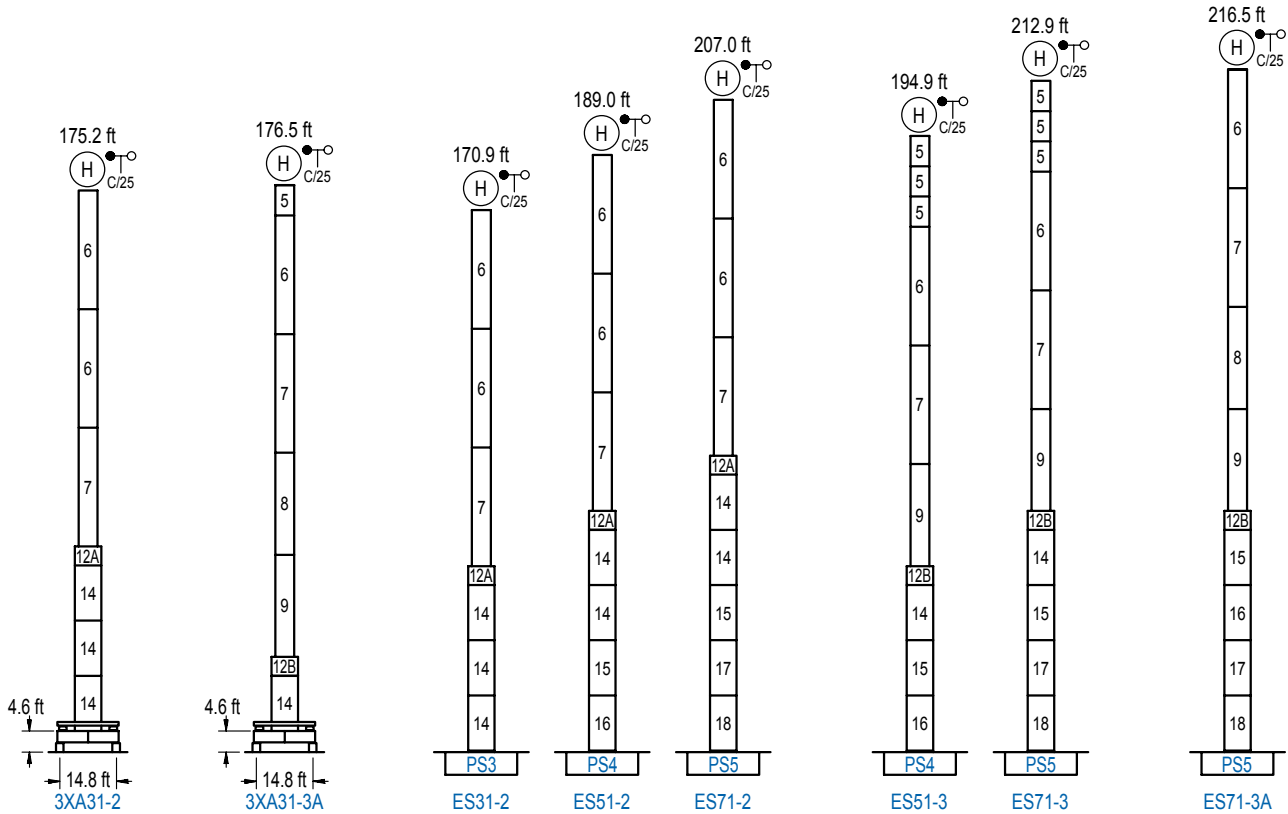
GRÚA TREPADORA

Internal climbing crane / Grue avec cage de télescopage intérieure / Kran mit klettern im Gebäude / Gru in rampante in cavedio / Кран с самоподъемом



n°	Ref.	∅	h
5	MH121	3.9	9.8
10	MT12-3A	3.9	9.5
11	CL20A	3.9	8.5

Otras zonas de viento, alturas superiores, arriostramientos o trepado interno consultar / Other wind zones, additional hook heights, tie frames or internal climbing on request / Autres zones de vent, des hauteurs supplémentaires, entretoisements ou grues avec cage de télescopage intérieure, sur demande / Andere Windzonen, weitere Hakenhöhen, Abspannungen zum Gebäude oder Klettern im Gebäude auf Anfrage / Per zone con velocità del vento particolari, altezze superiori, ancoraggi o rampante in cavedio, consultare il fabbricante / При других ветренных зонах, при большой высоте, привязках к зданию или наращивании крана внутри здания проконсультируйтесь с нами



n°	Ref.	∅	h	n°	Ref.	∅	h	n°	Ref.	∅	h
5	MH121	3.9	9.8	12A	TMS13/PMH12	5.2	3.3	14	S13	5.2	18.0
6	MH124-1	3.9	38.7	12B	TMS13/PMH13	5.2	3.3	15	TS14	5.2	18.0
7	MH124A	3.9	38.7					16	S14	5.2	18.0
8	MT123A	3.9	33.1					17	TS15	5.2	18.0
9	MT123	3.9	33.1					18	S15	5.2	18.0
MH124-1 = 4x MH121 - 0.7 ft											

Otras zonas de viento o alturas superiores consultar / Other wind zones or additional hook heights on request / Autres zones de vent ou des hauteurs supplémentaires sur demande / Andere Windzonen oder weitere Hakenhöhen auf Anfrage / Per zone con velocità del vento particolari o altezze superiori consultare il fabbricante / При других ветренных зонах о при большой высоте проконсультируйтесь с нами