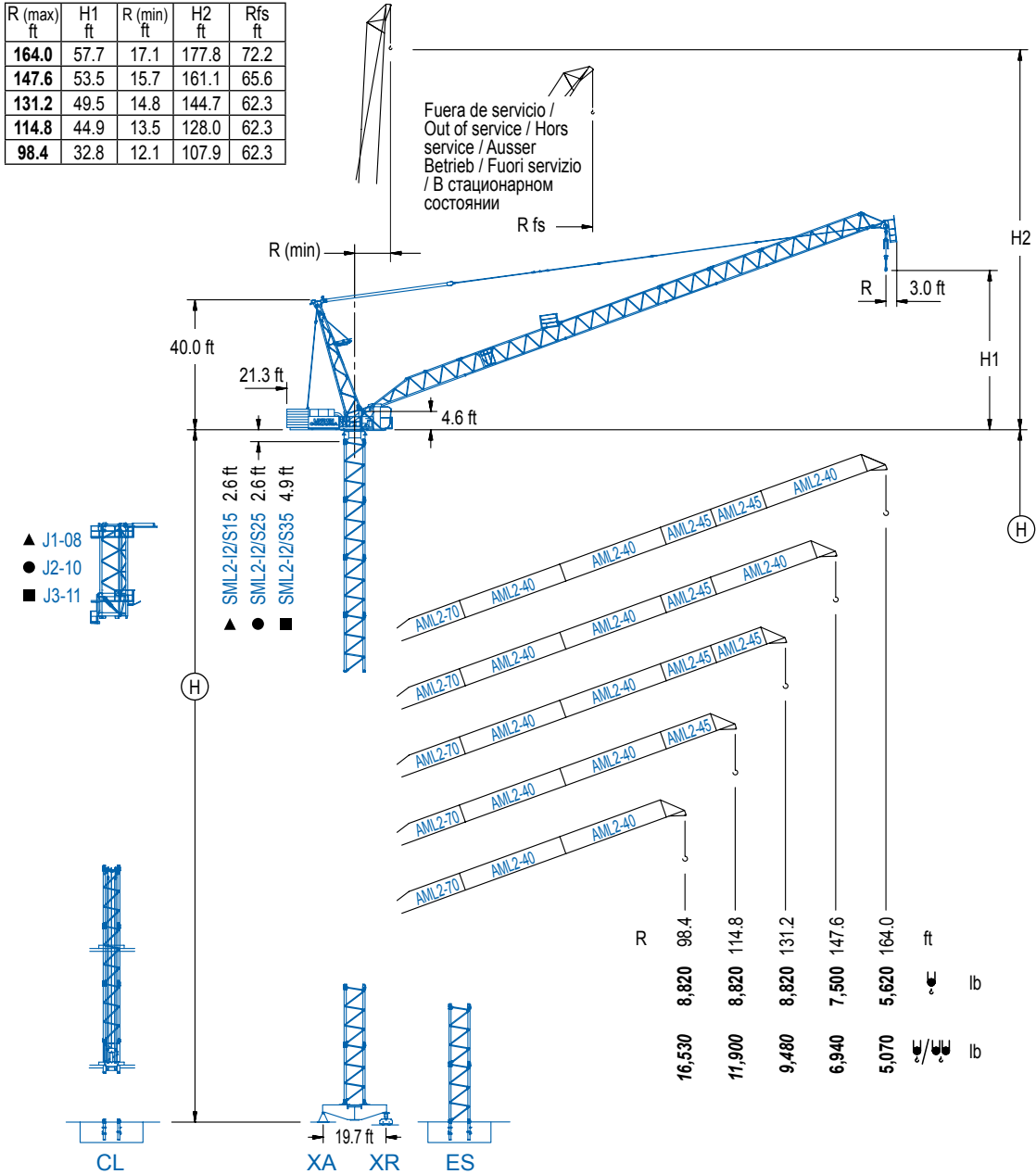


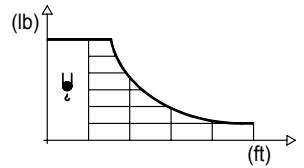
| R (max)<br>ft | H1<br>ft | R (min)<br>ft | H2<br>ft | Rfs<br>ft |
|---------------|----------|---------------|----------|-----------|
| 164.0         | 57.7     | 17.1          | 177.8    | 72.2      |
| 147.6         | 53.5     | 15.7          | 161.1    | 65.6      |
| 131.2         | 49.5     | 14.8          | 144.7    | 62.3      |
| 114.8         | 44.9     | 13.5          | 128.0    | 62.3      |
| 98.4          | 32.8     | 12.1          | 107.9    | 62.3      |



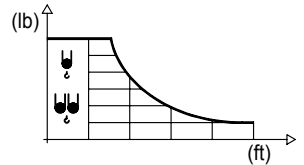
## DIAGRAMA DE CARGAS

Load chart / Diagramme de charges / Lastdiagramm / Diagramma di carico / Диаграмма распределения нагрузки

| R<br>(ft) | ↕ | RCmax<br>(ft) | 32.8 | 49.0 | 65.6 | 82.0  | 98.4 | 114.8 | 131.2 | 147.6 | 164.0 | ↔ (ft)<br>↕ (lb) |
|-----------|---|---------------|------|------|------|-------|------|-------|-------|-------|-------|------------------|
| 164.0     |   | 125.0         |      |      |      |       |      |       | 8,820 | 8,160 | 6,750 | 5,620            |
| 147.6     |   | 128.0         |      |      |      |       |      |       | 8,820 | 8,580 | 7,500 |                  |
| 131.2     |   | 131.2         |      |      |      |       |      |       | 8,820 |       |       |                  |
| 114.8     |   | 114.8         |      |      |      |       |      | 8,820 |       |       |       |                  |
| 98.4      |   | 98.4          |      |      |      | 8,820 |      |       |       |       |       |                  |

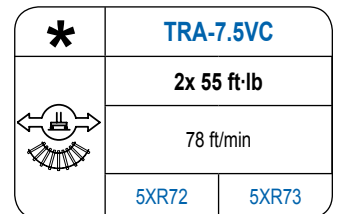
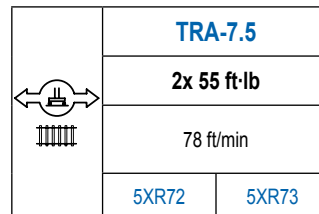
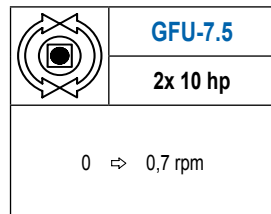
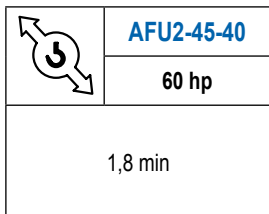
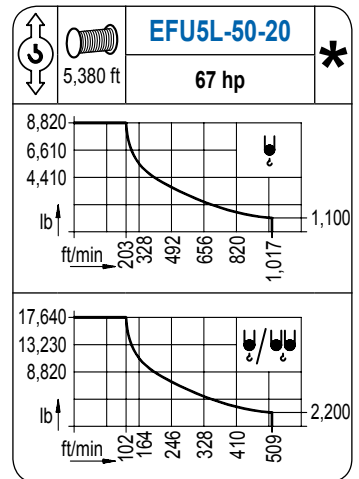
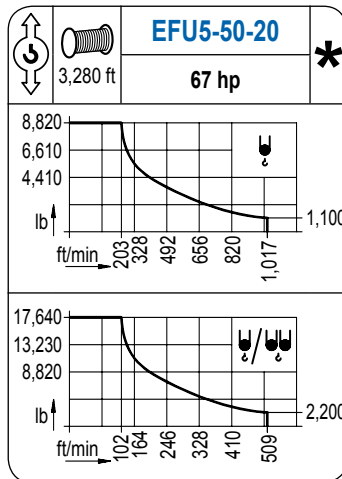
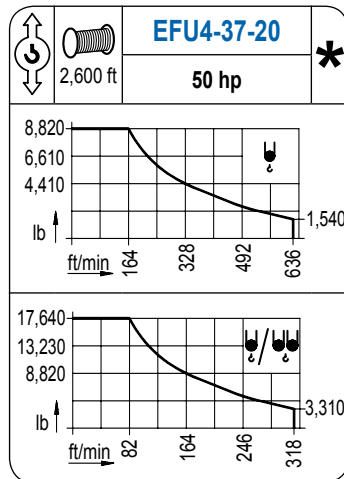
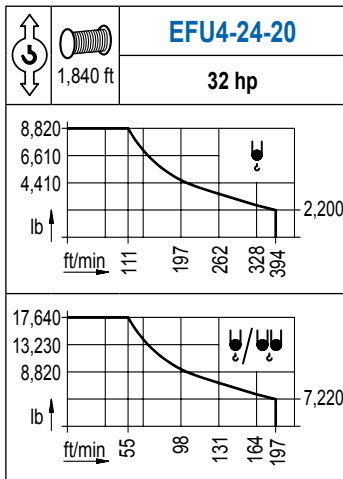


| R<br>(ft) | ↕/↕↕ | RCmax<br>(ft) | 32.8 | 49.0 | 65.6   | 82.0   | 98.4   | 114.8 | 131.2 | 147.6 | 164.0 | ↔ (ft)<br>↕ (lb) |
|-----------|------|---------------|------|------|--------|--------|--------|-------|-------|-------|-------|------------------|
| 164.0     |      | 78.7          |      |      | 17,640 | 16,360 | 11,880 | 9,190 | 7,410 | 6,080 | 5,070 |                  |
| 147.6     |      | 82.0          |      |      | 17,640 | 13,160 | 10,360 | 8,420 | 6,940 |       |       |                  |
| 131.2     |      | 85.6          |      |      | 17,640 | 14,440 | 11,570 | 9,480 |       |       |       |                  |
| 114.8     |      | 88.3          |      |      | 17,640 | 15,040 | 11,900 |       |       |       |       |                  |
| 98.4      |      | 91.9          |      |      | 17,640 | 16,530 |        |       |       |       |       |                  |



## MECANISMOS

Mechanisms / Mécanismes / Antriebe / Meccanismi / Механизмы



| POTENCIA / POWER / PUISSANCE / LEISTUNG / POTENZA / МОЩНОСТЬ             |  |  |   | Tensión de alimentación / Operating voltage / Tension de service / Betriebsspannung / Tensione di alimentazione / Напряжение источника питания | Generador / Generator / Générateur / Generatore / Генератор |
|--|--|--|---|--|---|
| Elevación / Hoist / Levage / Hub / Sollevamento / Тип механизма (подъем) | Abatimiento / Luffing / Releage / Einziehen / Brandeggio / Складывание | Giro / Slewing / Rotation / Drehbewegung / Rotazione / Поворот | Traslación / Travel / Translation / Verfahrbewegung / Traslazione / Ход | 480 V<br>3ph<br>60 Hz  | 160 kVA<br>185 kVA<br>215 kVA<br>215 kVA                    |
| EFU4-24-20   | AFU2-45-40   | (2x) GFU-7.5   | (2x) TRA-7.5  |  |   |
| EFU4-37-20   |  |  |   |  |   |
| EFU5-50-20   |  |  |   |  |   |
| EFU5L-50-20  |  |  |   |  |   |

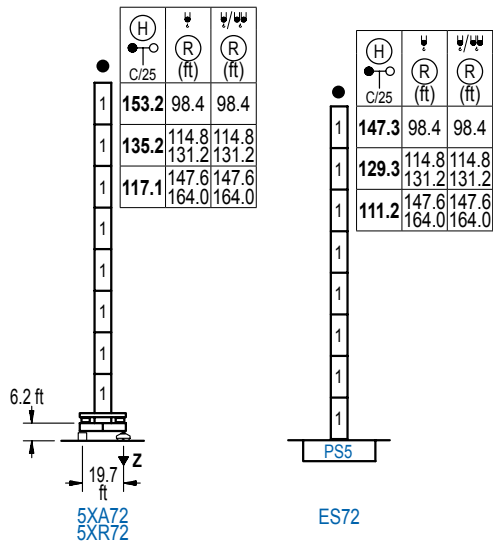
Opcional / Optional / En option / Kaufoption / Opzionale / Опционально

**\***

**ALTURAS DE TORRE**

Tower height / Hauteurs de tour / Turmhöhen / Altezza della torre / Высота башни

∅ 6.6 ft



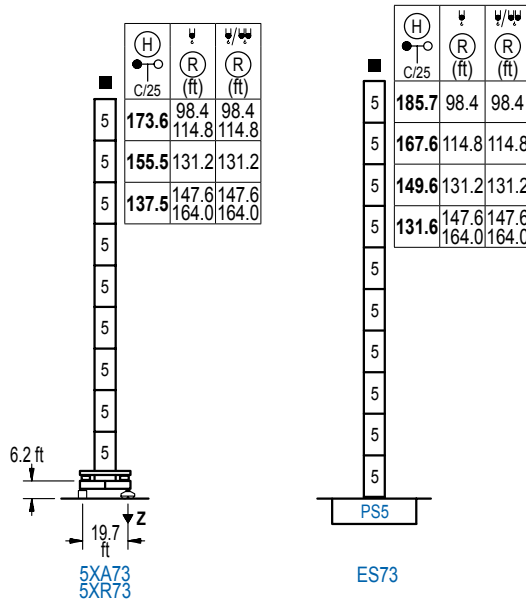
| n°               | Ref. | ∅   | h    |
|------------------|------|-----|------|
| 1                | S25  | 6.6 | 18.0 |
| 1x S25 = 1x S25M |      |     |      |

|               |  |                 |
|---------------|--|-----------------|
| <b>Z máx.</b> | En servicio / In operation / En service / In Betrieb / In servizio / При работе                                | 5XR72.. 231 kip |
|               | Fuera de servicio / Out of service / Hors service / Ausser Betrieb / Fuori servizio / В стационарном состоянии | 5XR72.. 289 kip |

**ALTURAS DE TORRE**

Tower height / Hauteurs de tour / Turmhöhen / Altezza della torre / Высота башни

∅ 8.2 ft



| n° | Ref. | ∅   | h    |
|----|------|-----|------|
| 5  | S35  | 8.2 | 18.0 |

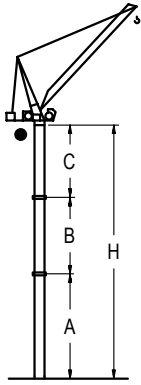
|               |  |                 |
|---------------|--|-----------------|
| <b>Z máx.</b> | En servicio / In operation / En service / In Betrieb / In servizio / При работе                                | 5XR73.. 258 kip |
|               | Fuera de servicio / Out of service / Hors service / Ausser Betrieb / Fuori servizio / В стационарном состоянии | 5XR73.. 355 kip |

Otras zonas de viento o alturas superiores consultar / Other wind zones or additional hook heights on request / Autres zones de vent ou des hauteurs supplémentaires sur demande / Andere Windzonen oder weitere Hakenhöhen auf Anfrage / Per zone con velocità del vento particolari o altezze superiori consultare il fabbricante / При других ветренных зонах о при большой высоте проконсультируйтесь с нами

## GRÚA ARRIOSTRADA

Braced crane / Grue à entretoisement / Abgespannter Kran / Gru ancorata / Нарациваемый кран

∅ 6.6 ft



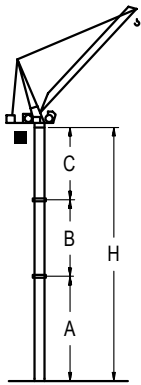
|       |     | 5XA72         |               |       |       |
|-------|-----|---------------|---------------|-------|-------|
| R     | ↓   | 164.0 / 147.6 | 131.2 / 114.8 | 98.4  |       |
| (ft)  | ↓/↓ | 164.0 / 147.6 | 131.2 / 114.8 | 98.4  |       |
| A max |     | 78.4          | 96.5          | 114.5 |       |
| A min |     | 78.4          | 78.4          | 78.4  |       |
| B max |     | 54.1          | 72.2          | -     | 72.2  |
| B min |     | 54.1          | 54.1          | -     | 54.1  |
| C max |     | 92.8          | 110.9         | 110.9 | 110.9 |
| H max |     | 171.3         | 225.4         | 207.3 | 279.5 |

|       |     | ES72          |               |       |       |
|-------|-----|---------------|---------------|-------|-------|
| R     | ↓   | 164.0 / 147.6 | 131.2 / 114.8 | 98.4  |       |
| (ft)  | ↓/↓ | 164.0 / 147.6 | 131.2 / 114.8 | 98.4  |       |
| A max |     | 72.5          | 90.6          | 33.1  |       |
| A min |     | 72.5          | 72.5          | 72.5  |       |
| B max |     | 54.1          | 72.2          | -     | 72.2  |
| B min |     | 54.1          | 54.1          | -     | 54.1  |
| C max |     | 92.8          | 110.9         | 110.9 | 110.9 |
| H max |     | 165.4         | 219.5         | 201.4 | 273.6 |

## GRÚA ARRIOSTRADA

Braced crane / Grue à entretoisement / Abgespannter Kran / Gru ancorata / Нарациваемый кран

∅ 8.2 ft



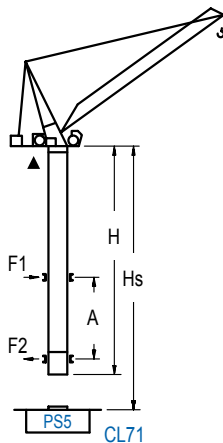
|       |     | 5XA73         |       |              |       |
|-------|-----|---------------|-------|--------------|-------|
| R     | ↓   | 164.0 / 147.6 | 131.2 | 114.8 / 98.4 |       |
| (ft)  | ↓/↓ | 164.0 / 147.6 | 131.2 | 114.8 / 98.4 |       |
| A max |     | 96.5          | 114.5 | 40.4         |       |
| A min |     | 78.4          | 78.4  | 78.4         |       |
| B max |     | 72.2          | 72.2  | -            | 90.2  |
| B min |     | 54.1          | 54.1  | -            | 54.1  |
| C max |     | 113.2         | 113.2 | 113.2        | 131.2 |
| H max |     | 63.9          | 281.8 | 227.7        | 300.0 |

|       |     | ES73          |       |       |       |
|-------|-----|---------------|-------|-------|-------|
| R     | ↓   | 164.0 / 147.6 | 131.2 | 114.8 |       |
| (ft)  | ↓/↓ | 164.0 / 147.6 | 131.2 | 114.8 |       |
| A max |     | 90.6          | 108.9 | 126.9 |       |
| A min |     | 72.5          | 72.5  | 72.5  |       |
| B max |     | 72.2          | 72.2  | -     | 90.2  |
| B min |     | 54.1          | 54.1  | -     | 54.1  |
| C max |     | 113.2         | 113.2 | 131.2 | 149.3 |
| H max |     | 203.7         | 275.9 | 221.8 | 294.0 |

## GRÚA TREPADORA

Internal climbing crane / Grue avec cage de télescopage intérieure / Kran mit klettern im Gebäude / Gru in rampante in cavedio / Кран с самоподъемом

∅ 5.2 ft



| H<br>C/25                      | ↓<br>(R)(ft)   | ↓/↓<br>(R)(ft) | Hs < 985 ft   |               |
|--------------------------------|----------------|----------------|---------------|---------------|
|                                |                |                | A max<br>(ft) | A min<br>(ft) |
| 139.1 ft<br>(7x S15 + CLS15-1) | 98.4<br>114.8  | 98.4<br>114.8  | 64.3          | 42.7          |
| 121.1 ft<br>(6x S15 + CLS15-1) | 131.2          | 131.2          | 55.1          | 42.7          |
| 103.0 ft<br>(5x S15 + CLS15-1) | 147.6<br>164.0 | 147.6<br>164.0 | 46.3          | 45.9          |

| nº | Ref.    | ∅   | h    |
|----|---------|-----|------|
| 15 | S15     | 5.2 | 18.0 |
| 16 | CLS15-1 | 5.2 | 10.2 |

1x S15 = 1x S15M

Otras zonas de viento, alturas superiores, arriostamientos o trepado interno consultar / Other wind zones, additional hook heights, tie frames or internal climbing on request / Autres zones de vent, des hauteurs supplémentaires, entretoisements où grues avec cage de télescopage intérieure, sur demande / Andere Windzonen, weitere Hakenhöhen, Abspannungen zum Gebäude oder Klettern im Gebäude auf Anfrage / Per zone con velocità del vento particolari, altezze superiori, ancoraggi o rampante in cavedio, consultare il fabbricante / При других ветренных зонах, при большой высоте, привязках к зданию или наращивании крана внутри здания проконсультируйтесь с нами

**LINDEN COMANSA**  
Construcciones Metálicas COMANSA S. A.

Tel.: (+34) 948 335 020 / Fax: (+34) 948 330 810 / E-mail: info@comansa.com  
Polígono Urbizkain, Ctra. Aoiz nº1 31620, Huarte (Navarra), SPAIN

DS.1539.04.IA 11/16 LCL 165/17,640 lb

Reserva de modificaciones. Subject to modifications. Modifications réservées. Konstruktionsänderungen vorbehalten.  
Il fabbricante si riserva la facoltà di apportare modifiche. Возможны изменения.