

R (max) ft	H1 ft	R (min) ft	H2 ft	Rfs ft
196,9	59,7	18,4	210,0	78,7
180,4	58,4	16,1	193,2	72,2
164,0	54,5	16,4	176,5	65,6
147,6	50,5	13,8	160,1	62,3
131,2	46,6	13,1	143,4	62,3
114,8	42,7	12,8	126,3	62,3
98,4	38,4	10,5	109,9	62,3

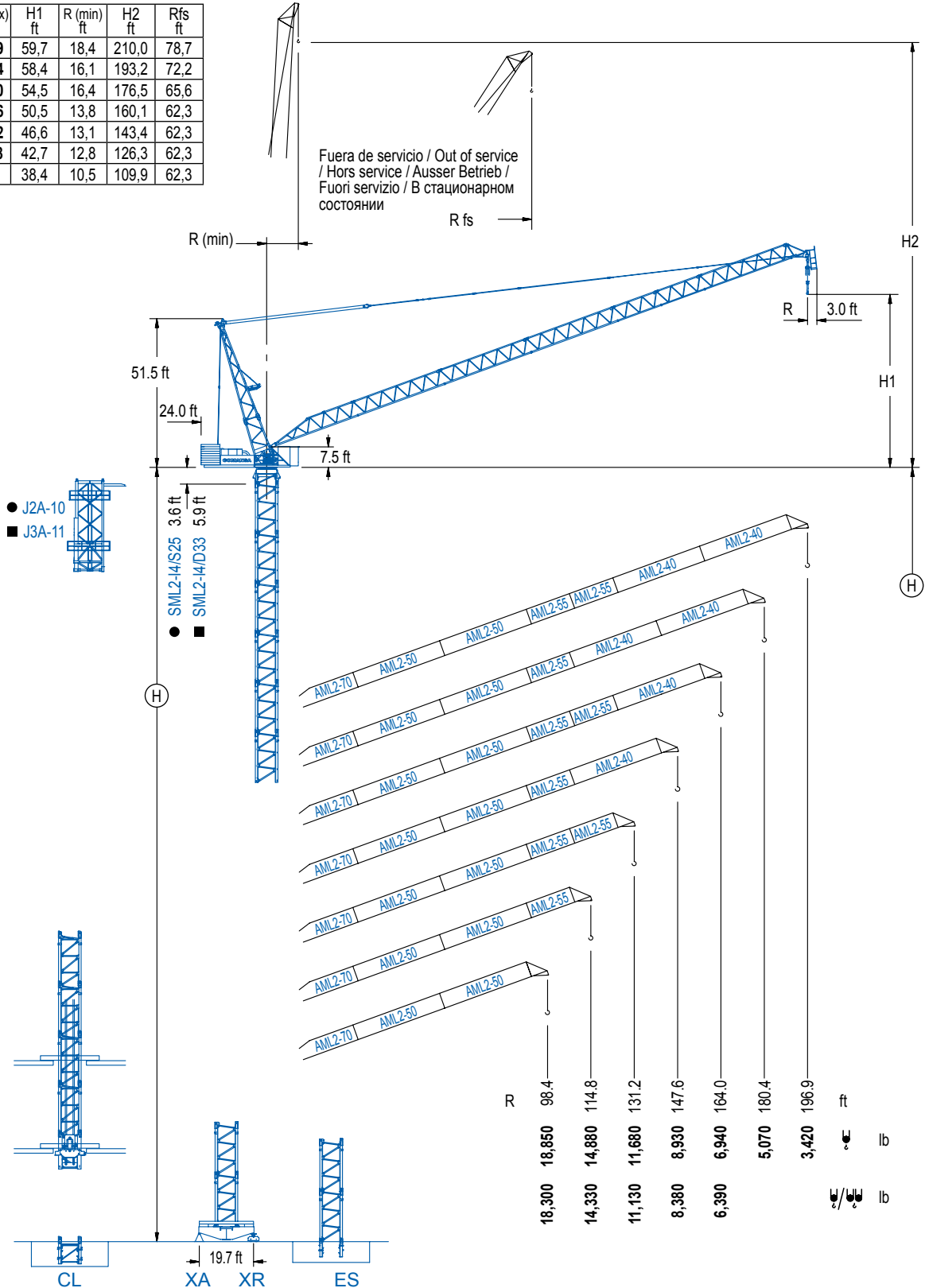
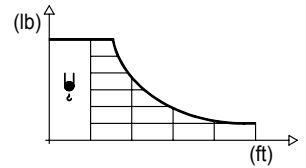


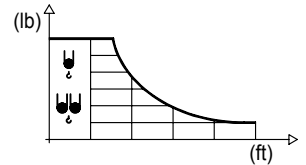
DIAGRAMA DE CARGAS

Load chart / Diagramme de charges / Lastdiagramm / Diagramma di carico / Диаграмма распределения нагрузки

R (ft)	ψ	RCmax (ft)	32.8	49.2	65.6	82.0	98.4	114.8	131.2	147.6	164.0	180.4	196.9	↔ (ft) ↓ (lb)
196.9		77.1			19,840	17,440	12,240	9,260	7,300	5,930	4,890	4,100	3,420	
180.4		81.4			19,840	19,550	14,180	10,960	8,800	7,230	6,040	5,070		
164.0		85.0			19,840	15,670	12,300	10,010	8,290	6,940				
147.6		89.2			19,840	17,000	13,380	10,850	8,930					
131.2		90.9			19,840	17,720	14,240	11,680						
114.8		94.5			19,840	18,720	14,880							
98.4		95.1			19,840	18,850								

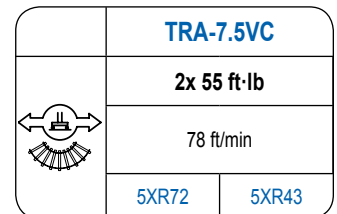
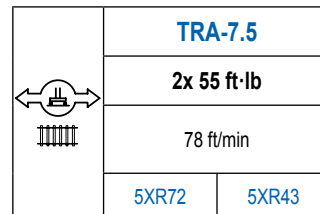
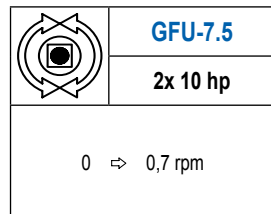
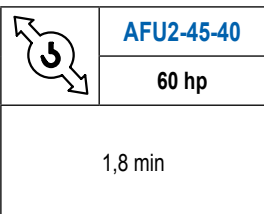
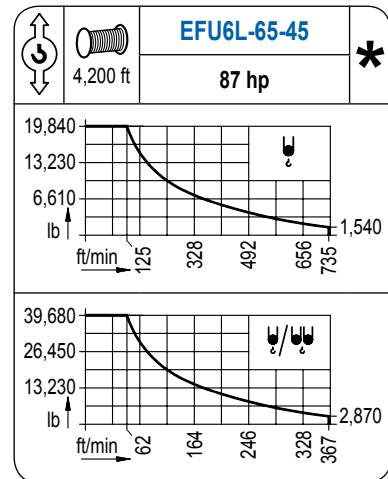
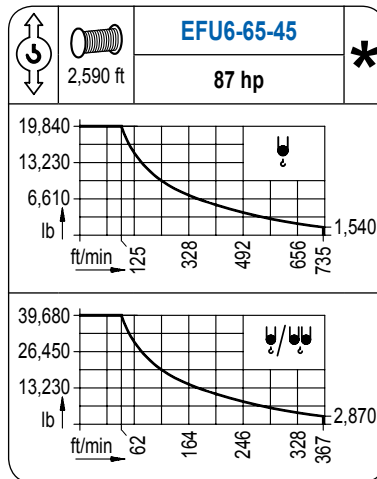
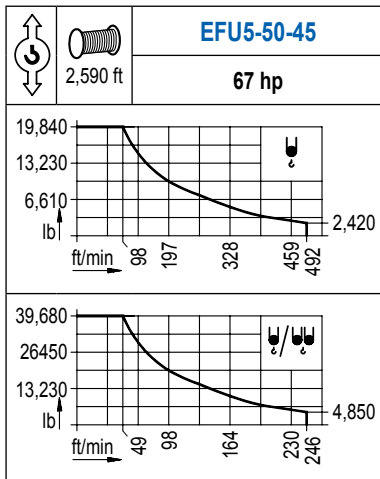


R (ft)	ψ/ψψ	RCmax (ft)	32.8	49.2	65.6	82.0	98.4	114.8	131.2	147.6	164.0	180.4	196.9	↔ (ft) ↓ (lb)
164.0		40.4	39,680	30,250	20,790	15,650	12,430	10,230	8,620	7,390	6,390			
147.6		38.4	39,680	29,830	21,490	16,670	13,510	11,310	9,660	8,380				
131.2		44.3	39,680	35,030	25,070	19,360	15,650	13,070	11,130					
114.8		49.2		39,680	28,040	21,490	17,280	14,330						
98.4		54.1		39,680	30,890	23,210	18,300							



MECANISMOS

Mechanisms / Mécanismes / Antriebe / Meccanismi / Механизмы



POTENCIA / POWER / PUISSANCE / LEISTUNG / POTENZA / МОЩНОСТЬ				Tensión de alimentación / Operating voltage / Tension de service / Betriebsspannung / Tensione di alimentazione / Напряжение источника питания	
Elevación / Hoist / Levage / Hub / Sollevamento / Тип механизма (подъем)	Abatimiento / Luffing / Releage / Einziehen / Brandeggio / Складывание	Giro / Slewing / Rotation / Drehbewegung / Rotazione / Поворот	Traslación / Travel / Translation / Verfahrbewegung / Traslazione / Ход	400 V	215 kVA
EFU5-50-45	AFU2-45-40	(2x) GFU-7.5	(2x) TRA-7.5	3ph	240 kVA
EFU6-65-45				50 Hz	240 kVA
EFU6L-65-45					

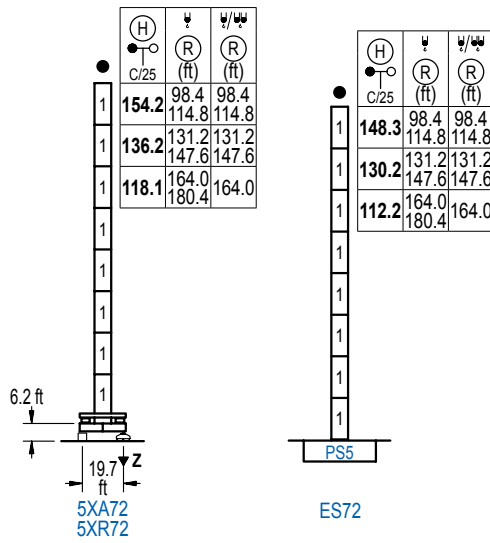
Opcional / Optional / En option / Kaufoption / Opzionale / Опционально

*

ALTURAS DE TORRE

Tower height / Hauteurs de tour / Turmhöhen / Altezza della torre / Высота башни

∅ 6.6 ft



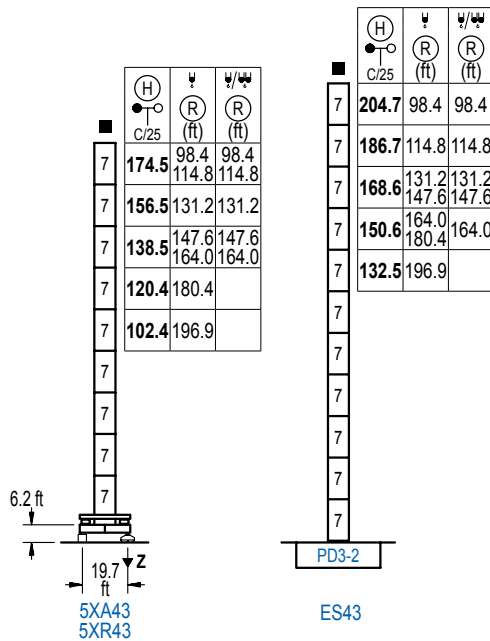
n°	Ref.	∅	h
1	S25	6.6	18.0
1x S25 = 1x S25M			

Z máx.	En servicio / In operation / En service / In Betrieb / In servizio / При работе	5XR72.. 245 kip
	Fuera de servicio / Out of service / Hors service / Ausser Betrieb / Fuori servizio / В стационарном состоянии	5XR72.. 317 kip

ALTURAS DE TORRE

Tower height / Hauteurs de tour / Turmhöhen / Altezza della torre / Высота башни

∅ 8.2 ft



n°	Ref.	∅	h
7	D33	8.2	18.0
1x D33 = 1x D33M			

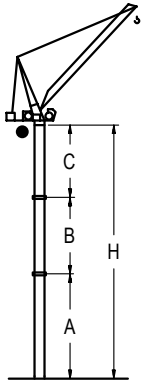
Z máx.	En servicio / In operation / En service / In Betrieb / In servizio / При работе	5XR43.. 262 kip
	Fuera de servicio / Out of service / Hors service / Ausser Betrieb / Fuori servizio / В стационарном состоянии	5XR43.. 368 kip

LCL Series

GRÚA ARRIOSTRADA

Braced crane / Grue à entretoisement / Abgespannter Kran / Gru ancorata / Наращиваемый кран

∅ 6.6 ft



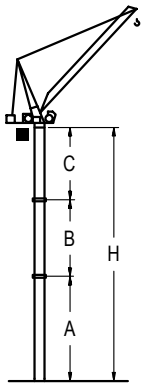
		5XA72			
R	⚡	180.4 / 164.0	147.6 / 131.2	114.8 / 98.4	
(ft)	⚡/⚡	164.0	147.6 / 131.2	114.8 / 98.4	
A max		78.4	96.5	114.5	
A min		78.4	96.5	78.4	
B max		54.1	72.2	54.1	
B min		-	54.1	-	54.1
C max		93.8	93.8	111.9	111.9
H max		172.2	226.4	208.3	280.5

		ES72			
R	⚡	180.4 / 164.0	147.6 / 131.2	114.8 / 98.4	
(ft)	⚡/⚡	164.0	147.6 / 131.2	114.8 / 98.4	
A max		72.5	90.6	108.6	
A min		72.5	90.6	72.5	
B max		54.1	72.2	54.1	
B min		-	54.1	-	54.1
C max		93.8	93.8	111.9	111.9
H max		166.3	220.5	202.4	274.6

GRÚA ARRIOSTRADA

Braced crane / Grue à entretoisement / Abgespannter Kran / Gru ancorata / Наращиваемый кран

∅ 8.2 ft



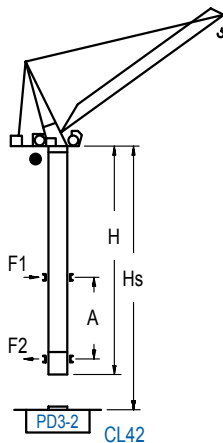
		5XA43					
R	⚡	196.9	180.4	164.0 / 147.6	131.2	114.8 / 98.4	
(ft)	⚡/⚡	-	-	164.0 / 147.6	131.2	114.8 / 98.4	
A max		60.4	78.4	96.5	114.5	132.5	
A min		60.4	78.4	78.4	78.4	78.4	
B max		54.1	72.2	90.2	90.2	108.3	
B min		-	54.1	54.1	54.1	54.1	
C max		96.1	114.2	132.2	132.2	132.2	45.8
H max		156.5	210.6	192.6	264.8	228.7	318.9

		ES43					
R	⚡	196.9	180.4 / 164.0	147.6 / 131.2	114.8	98.4	
(ft)	⚡/⚡	-	164.0	147.6 / 131.2	114.8	98.4	
A max		90.6	108.6	126.6	144.7	162.7	
A min		72.5	72.5	72.5	72.5	72.5	
B max		54.1	72.2	90.2	108.3	108.3	
B min		-	54.1	54.1	54.1	54.1	
C max		96.1	114.2	132.2	150.3	132.2	150.3
H max		186.9	241.0	223.0	294.9	258.9	331.0

GRÚA TREPADORA

Internal climbing crane / Grue avec cage de télescopage intérieure / Kran mit klettern im Gebäude / Gru in rampante in cavedio / Кран с самоподъемом

∅ 6.6 ft



⊙ C/25	⚡		Hs < 985 ft	
	Ⓡ(ft)	⚡/⚡(ft)	A max (ft)	A min (ft)
177.2 ft (4x S25 + TD23A + 4x D23A + CLD23A-12)	98.4 114.8	98.4 114.8	82.0	36.1
159.1 ft (3x S25 + TD23A + 4x D23A + CLD23A-12)	131.2	131.2	73.2	36.1
141.1 ft (2x S25 + TD23A + 4x D23A + CLD23A-12)	147.6 164.0	147.6	64.3	36.1
123.0 ft (S25 + TD23A + 4x D23A + CLD23A-12)	180.4	164.0	55.1	32.8
105.0 ft (TD23A + 4x D23A + CLD23A-12)	196.9	-	46.3	32.8

n°	Ref.	∅	h
1	S25	6.6	18.0
2	TD23A	6.6	18.0
4	D23A	6.6	18.0
14	CLD23A-12	6.6	11.2

1x S25 = 1x S25M

Otras zonas de viento, alturas superiores, arriostamientos o trepado interno consultar / Other wind zones, additional hook heights, tie frames or internal climbing on request / Autres zones de vent, des hauteurs supplémentaires, entretoisements ou grues avec cage de télescopage intérieure, sur demande / Andere Windzonen, weitere Hakenhöhen, Abspannungen zum Gebäude oder Klettern im Gebäude auf Anfrage / Per zone con velocità del vento particolari, altezze superiori, ancoraggi o rampante in cavedio, consultare il fabbricante / При других ветренных зонах, при большой высоте, привязках к зданию или наращивании крана внутри здания проконсультируйтесь с нами