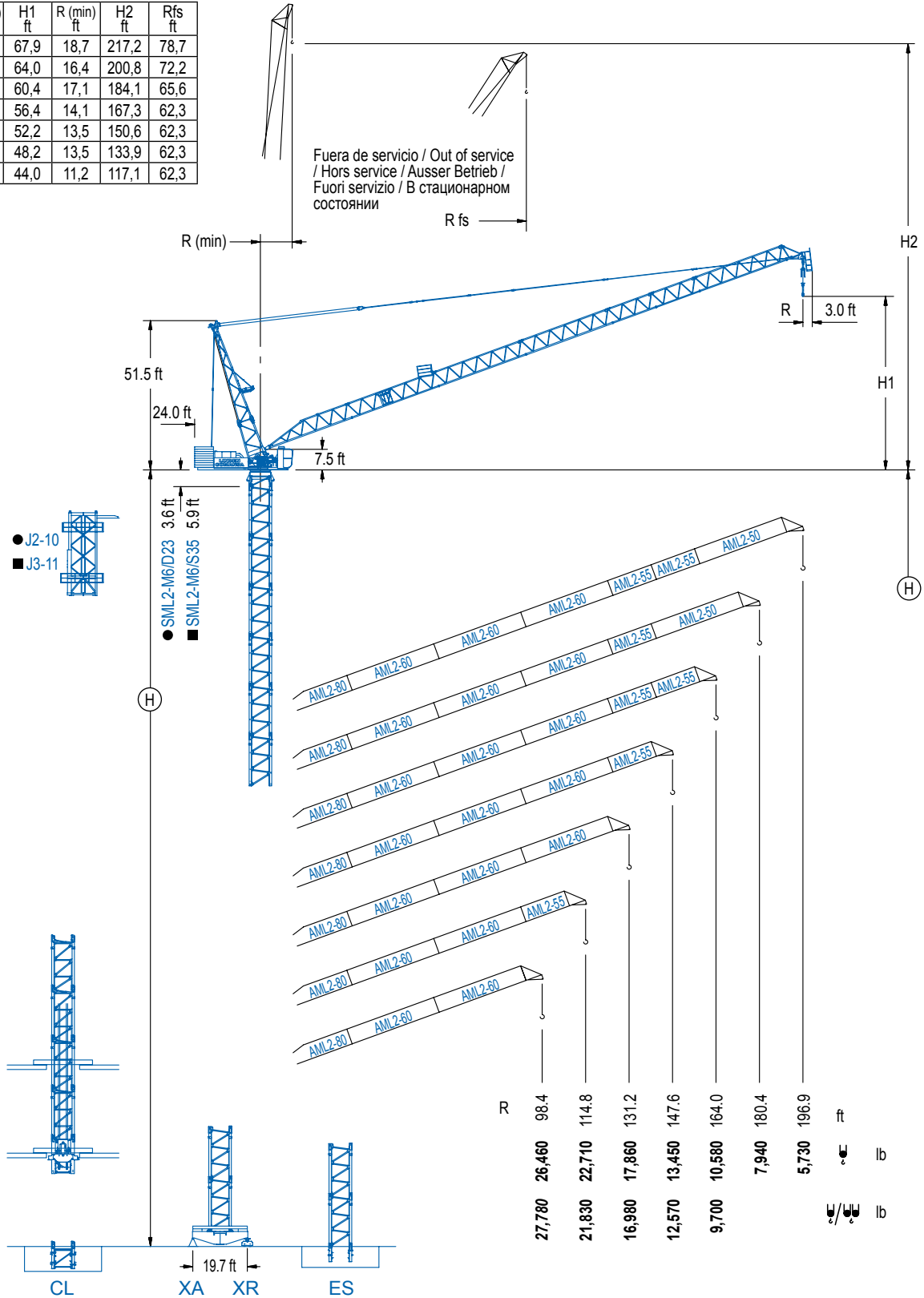


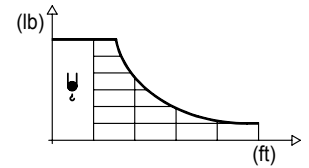
R (max) ft	H1 ft	R (min) ft	H2 ft	Rfs ft
<b>196,9</b>	67,9	18,7	217,2	78,7
<b>180,4</b>	64,0	16,4	200,8	72,2
<b>164,0</b>	60,4	17,1	184,1	65,6
<b>147,6</b>	56,4	14,1	167,3	62,3
<b>131,2</b>	52,2	13,5	150,6	62,3
<b>114,8</b>	48,2	13,5	133,9	62,3
<b>98,4</b>	44,0	11,2	117,1	62,3



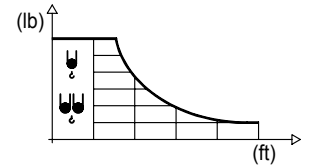
## DIAGRAMA DE CARGAS

Load chart / Diagramme de charges / Lastdiagramm / Diagramma di carico / Диаграмма распределения нагрузки

R (ft)	ψ	RCmax (ft)	32.8	49.2	65.6	82.0	98.4	114.8	131.2	147.6	164.0	180.4	196.9	↔ (ft) ↓ (lb)
196.9		86.0				26,460	20,390	15,410	12,170	9,900	8,180	6,860	5,730	
180.4		88.9				26,460	22,180	17,130	13,760	11,330	9,460	7,940		
164.0		91.5				26,460	23,610	18,630	15,170	12,610	10,580			
147.6		94.8				26,460	25,000	19,860	16,230	13,450				
131.2		97.4				26,460	26,120	21,360	17,860					
114.8		101.0				26,460	26,460	22,710						
98.4		98.4				26,460								

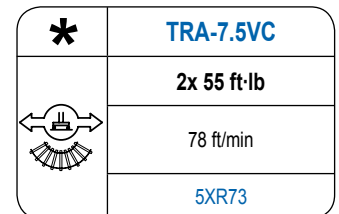
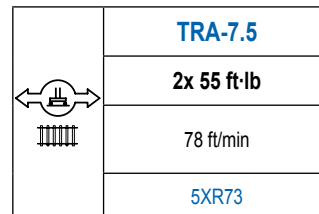
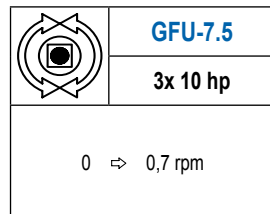
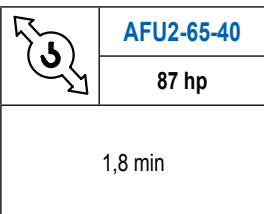
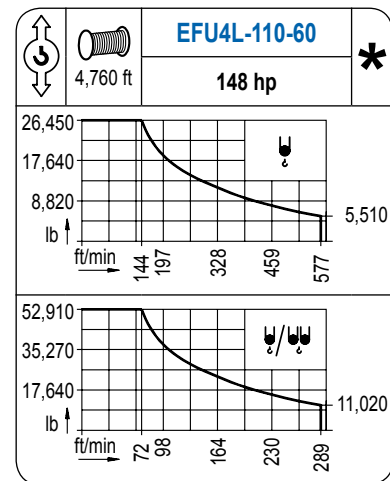
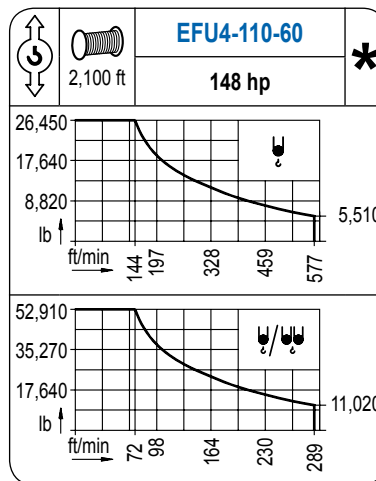
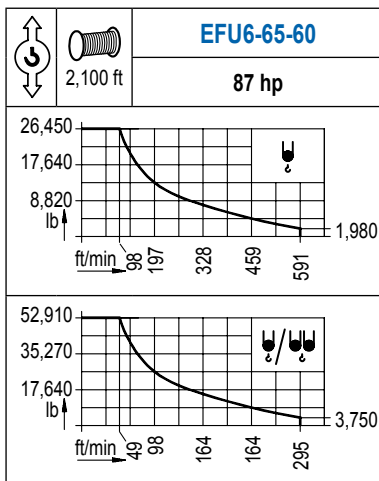


R (ft)	ψ/ψψ	RCmax (ft)	32.8	49.2	65.6	82.0	98.4	114.8	131.2	147.6	164.0	180.4	196.9	↔ (ft) ↓ (lb)
164.0		47.9	52,910	50,820	33,710	24,910	19,530	15,920	13,290	11,290	9,700			
147.6		50.2		52,910	36,660	27,340	21,560	17,640	14,770	12,570				
131.2		52.2		52,910	39,790	30,310	24,270	20,080	16,980					
114.8		52.5		52,910	41,160	32,010	26,040	21,830						
98.4		55.4		52,910	43,830	34,130	27,780							



## MECANISMOS

Mechanisms / Mécanismes / Antriebe / Meccanismi / Механизмы



POTENCIA / POWER / PUISSANCE / LEISTUNG / POTENZA / МОЩНОСТЬ				Tensión de alimentación / Operating voltage / Tension de service / Betriebsspannung / Tensione di alimentazione / Напряжение источника питания	
Elevación / Hoist / Levage / Hub / Sollevamento / Тип механизма (подъем)	Abatimiento / Luffing / Releage / Einziehen / Brandeggio / Складывание	Giro / Slewing / Rotation / Drehbewegung / Rotazione / Поворот	Traslación / Travel / Translation / Verfahrbewegung / Traslazione / Ход	Generador / Generator / Générateur / Generator / Generatore / Генератор	280 kVA
EFU6-65-60	AFU2-65-40	(3x) GFU-7.5	(2x) TRA-7.5	480 V	345 kVA
EFU4-110-60				3ph	345 kVA
EFU4L-110-60				60 Hz	345 kVA

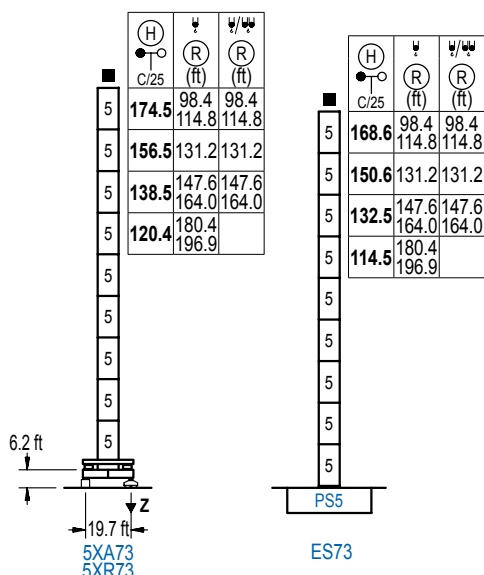
Opcional / Optional / En option / Kaufoption / Opzionale / Опционально

\*

## ALTURAS DE TORRE

Tower height / Hauteurs de tour / Turmhöhen / Altezza della torre / Высота башни

∅ 8.2 ft



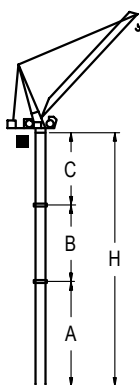
n°	Ref.	∅	h
5	S35	8.2	18.0

Z máx.	En servicio / In operation / En service / In Betrieb / In servizio / При работе	5XR73.. 293 kip
	Fuera de servicio / Out of service / Hors service / Ausser Betrieb / Fuori servizio / В стационарном состоянии	5XR73.. 366 kip

## GRÚA ARRIOSTRADA

Braced crane / Grue à entretoisement / Abgespannter Kran / Gru ancorata / Нарцываемый кран

∅ 8.2 ft



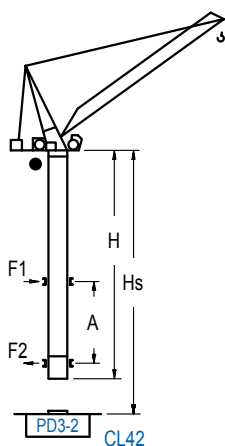
		5XA73							
R (ft)	W/W (ft)	196.9 / 180.4	164.0 / 147.6	131.2	114.8 / 98.4				
A max	A min	78.4	96.5	114.5	132.5				
B max	B min	78.4	78.4	78.4	78.4				
C max	C min	54.1	54.1	72.2	72.2				
H max		174.5	228.7	192.6	246.7	228.7	300.9	246.7	318.9

		ES73							
R (ft)	W/W (ft)	196.9 / 180.4	164.0 / 147.6	131.2	114.8 / 98.4				
A max	A min	72.5	90.6	108.6	126.6				
B max	B min	72.5	72.5	72.5	72.5				
C max	C min	54.1	54.1	72.2	72.2				
H max		168.6	222.8	186.7	240.8	222.8	294.9	240.8	313.0

## GRÚA TREPADORA

Internal climbing crane / Grue avec cage de télescope intérieure / Kran mit klettern im Gebäude / Gru in rampante in cavedio / Кран с самоподъемом

∅ 6.6 ft



H (ft)	W (ft)	W/W (ft)	Hs < 985 ft	
C/25	(ft)	(ft)	A max (ft)	A min (ft)
159.1 ft (4x D23 + 4x D23A + CLD23A-1)	98.4 / 114.8	98.4 / 114.8	64.3	29.5
141.1 ft (3x D23 + 4x D23A + CLD23A-1)	131.2	131.2	55.1	29.5
123.0 ft (2x D23 + 4x D23A + CLD23A-1)	147.6 / 164.0	147.6 / 164.0	46.3	29.5
105.0 ft (D23 + 4x D23A + CLD23A-1)	180.4 / 196.9	180.4 / 196.9	37.4	32.8

n°	Ref.	∅	h
3	D23	6.6	18.0
4	D23A	6.6	18.0
14	CLD23A-1	6.6	11.2

Otras zonas de viento, alturas superiores, arriostramientos o trepado interno consultar / Other wind zones, additional hook heights, tie frames or internal climbing on request / Autres zones de vent, des hauteurs supplémentaires, entretoisements ou grues avec cage de télescope intérieure, sur demande / Andere Windzonen, weitere Hakenhöhen, Abspannungen zum Gebäude oder Klettern im Gebäude auf Anfrage / Per zone con velocità del vento particolari, altezze superiori, ancoraggi o rampante in cavedio, consultare il fabbricante / При других ветренных зонах, при большой высоте, привязках к зданию или наращивании крана внутри здания проконсультируйтесь с нами

**LINDEN COMANSA**

Construcciones Metálicas COMANSA S. A.

Tel.: (+34) 948 335 020 / Fax: (+34) 948 330 810 / E-mail: info@comansa.com  
Polígono Urbizkain, Ctra. Aoiz nº1 31620, Huarte (Navarra), SPAIN

DS.1539.10.IA 11/16 LCL 280/52,910 lb

Reserva de modificaciones. Subject to modifications. Modifications réservées. Konstruktionsänderungen vorbehalten.  
Il fabbricante si riserva la facoltà di apportare modifiche. Возможны изменения.

LCL

