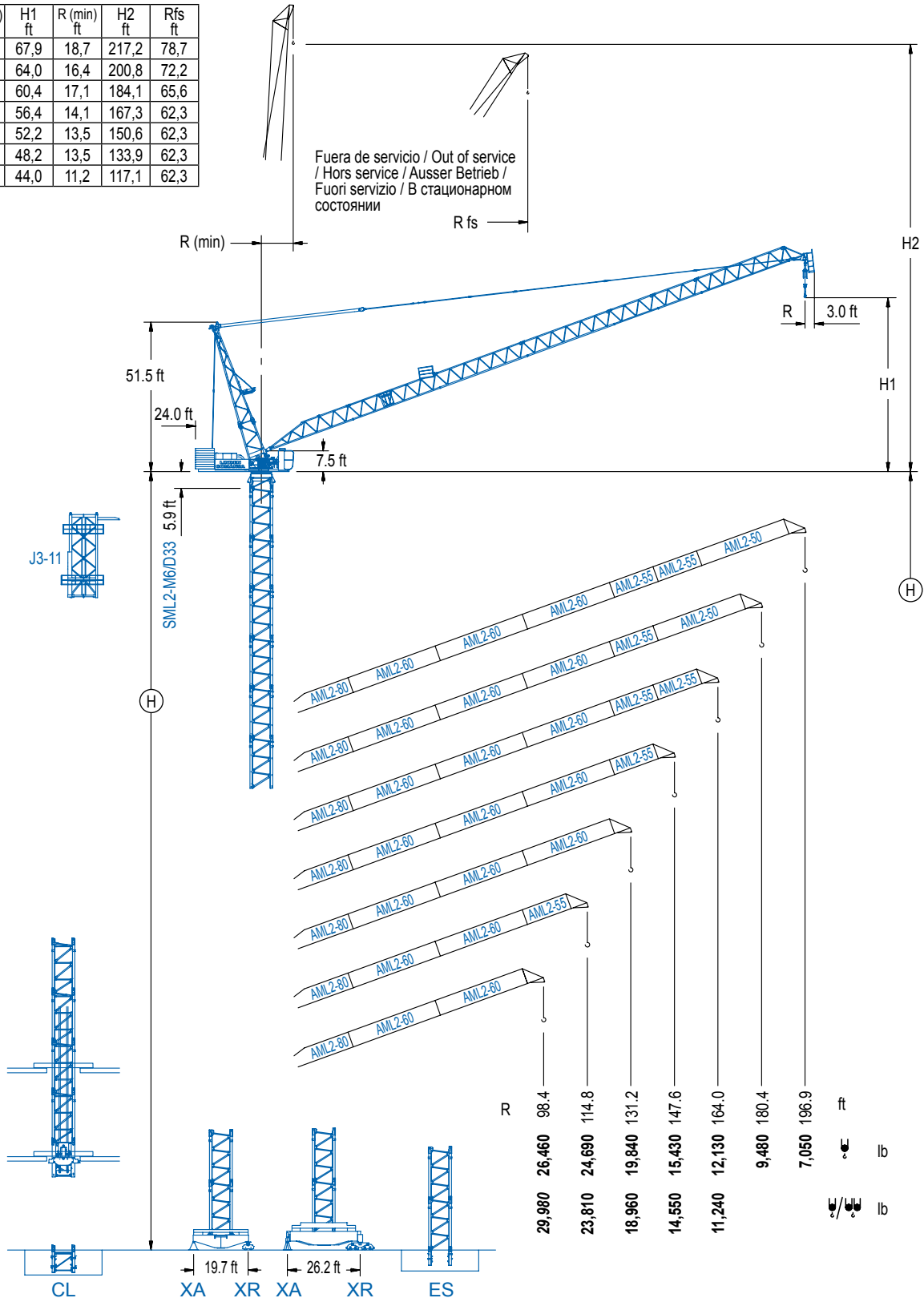


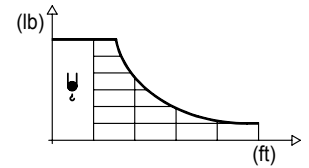
R (max) ft	H1 ft	R (min) ft	H2 ft	Rfs ft
196,9	67,9	18,7	217,2	78,7
180,4	64,0	16,4	200,8	72,2
164,0	60,4	17,1	184,1	65,6
147,6	56,4	14,1	167,3	62,3
131,2	52,2	13,5	150,6	62,3
114,8	48,2	13,5	133,9	62,3
98,4	44,0	11,2	117,1	62,3



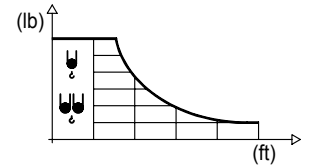
## DIAGRAMA DE CARGAS

Load chart / Diagramme de charges / Lastdiagramm / Diagramma di carico / Диаграмма распределения нагрузки

R (ft)	↓	RCmax (ft)	32.8	49.2	65.6	82.0	98.4	114.8	131.2	147.6	164.0	180.4	196.9	↔ (ft) ↓ (lb)
196.9		91.9				26,460	23,370	17,920	14,330	11,770	9,830	8,330	7,050	
180.4		95.1				26,460	25,040	19,620	15,920	13,230	11,180	9,480		
164.0		98.4				26,460	20,990	17,200	14,370	12,130				
147.6		101.7				26,460	22,290	18,410	15,430					
131.2		105.0				26,460	23,610	19,840						
114.8		108.3				26,460	24,690							
98.4		98.4				26,460								

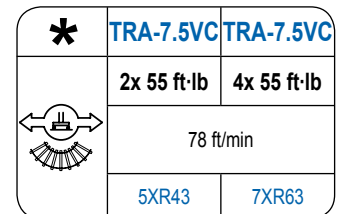
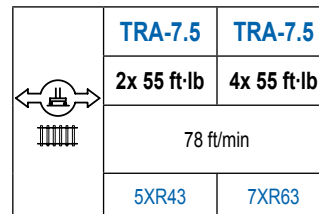
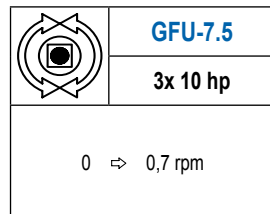
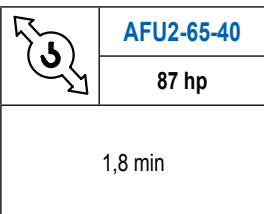
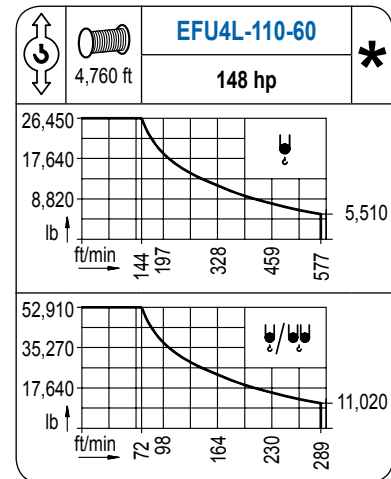
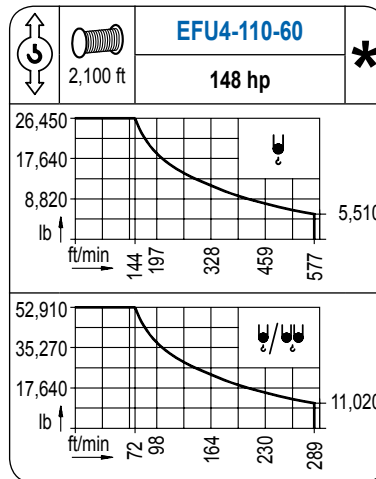
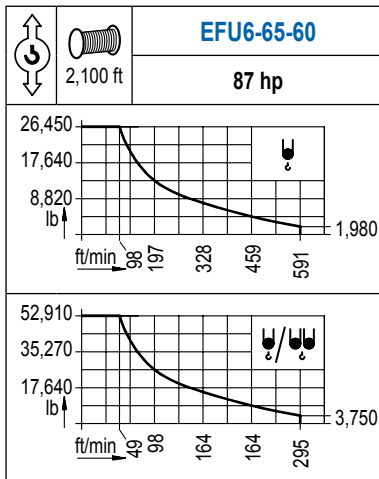


R (ft)	↓	RCmax (ft)	32.8	49.2	65.6	82.0	98.4	114.8	131.2	147.6	164.0	180.4	196.9	↔ (ft) ↓ (lb)
164.0		47.9	52,910	51,080	35,470	26,900	21,490	17,750	15,010	12,920	11,240			
147.6		50.2	52,910	38,400	29,500	23,770	19,780	16,840	14,550					
131.2		52.8	52,910	41,510	32,340	26,340	22,110	18,960						
114.8		55.8	52,910	44,250	34,610	28,290	23,810							
98.4		59.1	52,910	47,070	36,750	29,980								



## MECANISMOS

Mechanisms / Mécanismes / Antriebe / Meccanismi / Механизмы



POTENCIA / POWER / PUISSANCE / LEISTUNG / POTENZA / МОЩНОСТЬ				Tensión de alimentación / Operating voltage / Tension de service / Betriebsspannung / Tensione di alimentazione / Напряжение источника питания	Generador / Generator / Générateur / Generator / Generatore / Генератор
Elevación / Hoist / Levage / Hub / Sollevamento / Тип механизма (подъем)	Abatimiento / Luffing / Releage / Einziehen / Brandeggio / Складывание	Giro / Slewing / Rotation / Drehbewegung / Rotazione / Поворот	Traslación / Travel / Translation / Verfahrbewegung / Traslazione / Ход	480 V 3ph 60 Hz	280 kVA 345 kVA 345 kVA
EFU6-65-60	AFU2-65-40	(3x) GFU-7.5	(2x) TRA-7.5		
EFU4-110-60			(4x) TRA-7.5		
EFU4L-110-60					

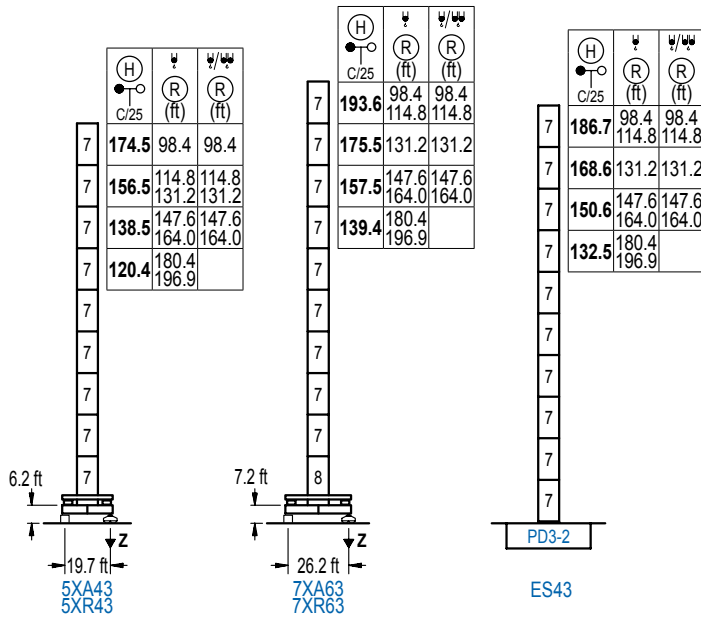
Opcional / Optional / En option / Kaufoption / Opzionale / Опционально

\*

## ALTURAS DE TORRE

Tower height / Hauteurs de tour / Turmhöhen / Altezza della torre / Высота башни

∅ 8.2 ft



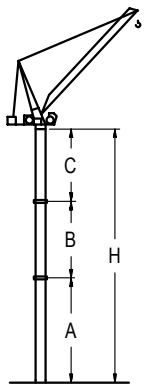
n°	Ref.	∅	h
7	D33	8.2	18.0
8	TD34	8.2	18.0

Z máx.	En servicio / In operation / En service / In Betrieb / In servizio / При работе	5XR43.. 300 kip 7XR63.. 262 kip
	Fuera de servicio / Out of service / Hors service / Ausser Betrieb / Fuori servizio / В стационарном состоянии	5XR43.. 370 kip 7XR63.. 337 kip

## GRÚA ARRIOSTRADA

Braced crane / Grue à entretoisement / Abgespannter Kran / Gru ancorata / Нарациваемый кран

∅ 8.2 ft



5XA43					
R	∅	196.9 / 180.4	164.0 / 147.6	131.2 / 114.8	98.4
(ft)	∅	-	164.0 / 147.6	131.2 / 114.8	98.4
A max		78.4	96.5	114.5	132.5
A min		78.4	78.4	78.4	78.4
B max		-	54.1	-	108.3
B min		-	54.1	-	54.1
C max		96.1	114.2	132.2	150.3
H max		174.5	228.7	246.7	373.0

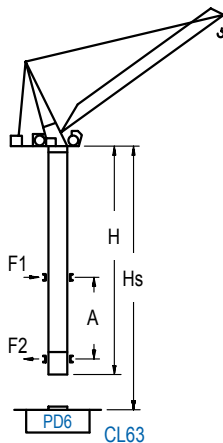
7XA63					
R	∅	196.9 / 180.4	164.0 / 147.6	131.2	114.8 / 98.4
(ft)	∅	-	164.0 / 147.6	131.2	114.8 / 98.4
A max		97.4	115.5	133.5	151.6
A min		79.4	79.4	79.4	79.4
B max		-	54.1	-	108.3
B min		-	54.1	-	54.1
C max		96.1	114.2	132.2	150.3
H max		193.6	247.7	265.7	392.1

ES43					
R	∅	196.9 / 180.4	164.0 / 147.6	131.2	114.8 / 98.4
(ft)	∅	-	164.0 / 147.6	131.2	114.8 / 98.4
A max		90.6	108.6	126.6	144.7
A min		72.5	72.5	72.5	72.5
B max		-	54.1	-	108.3
B min		-	54.1	-	54.1
C max		96.1	114.2	132.2	150.3
H max		186.7	240.8	258.9	385.2

## GRÚA TREPADORA

Internal climbing crane / Grue avec cage de télescopage intérieure / Kran mit klettern im Gebäude / Gru in rampante in cavedio / Кран с самоподъемом

∅ 8.2 ft



(H)	(R)	(R)	A max	A min
C/25	(ft)	(ft)	(ft)	(ft)
216.9 ft (6x D33 + TD34 + 4x D34A + CLD34A)	98.4 114.8	98.4 114.8	80.7	49.2
198.8 ft (5x D33 + TD34 + 4x D34A + CLD34A)	131.2	131.2	80.7	45.9
180.8 ft (4x D33 + TD34 + 4x D34A + CLD34A)	147.6 164.0	147.6	71.9	45.9
162.7 ft (3x D33 + TD34 + 4x D34A + CLD34A)	180.4	164.0	62.7	45.9
144.7 ft (2x D33 + TD34 + 4x D34A + CLD34A)	196.9		53.8	42.7

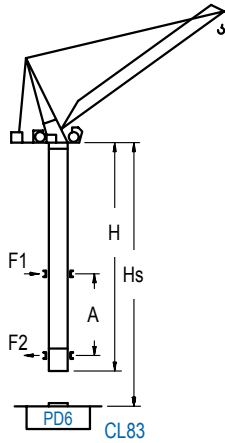
n°	Ref.	∅	h
7	D33	8.2	18.0
8	TD34	8.2	18.0
20	D34A	8.2	18.0
21	CLD34A	8.2	12.5

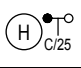
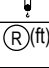
Otras zonas de viento, alturas superiores, arriostramientos o trepado interno consultar / Other wind zones, additional hook heights, tie frames or internal climbing on request / Autres zones de vent, des hauteurs supplémentaires, entretoisements ou grues avec cage de télescopage intérieure, sur demande / Andere Windzonen, weitere Hakenhöhen, Abspannungen zum Gebäude oder Klettern im Gebäude auf Anfrage / Per zone con velocità del vento particolari, altezze superiori, ancoraggi o rampante in cavedio, consultare il fabbricante / При других ветренных зонах, при большой высоте, привязках к зданию или наращивании крана внутри здания проконсультируйтесь с нами

# GRÚA TREPADORA

Internal climbing crane / Grue avec cage de télescopage intérieure / Kran mit klettern im Gebäude / Gru in rampante in cavedio / Кран с самоподъемом

∅8.2 ft



			Hs < 1,310 ft	
	(R)(ft)	(R)(ft)	A max (ft)	A min (ft)
<b>216.9 ft</b> (5x D33 + TD34 + TD36B + 4x D36A + CLD36)	98.4 114.8	98.4 114.8	80.7	32.8
<b>198.8 ft</b> (4x D33 + TD34 + TD36B + 4x D36A + CLD36)	131.2	131.2	71.9	32.8
<b>180.8 ft</b> (3x D33 + TD34 + TD36B + 4x D36A + CLD36)	147.6 164.0	147.6 164.0	62.7	32.8
<b>162.7 ft</b> (2x D33 + TD34 + TD36B + 4x D36A + CLD36)	180.4 196.9		53.8	32.8

nº	Ref.	∅	h
7	D33	8.2	18.0
8	TD34	8.2	18.0
10	TD36B	8.2	18.0
12	D36A	8.2	18.0
13	CLD36	8.2	12.5

Otras zonas de viento, alturas superiores, arriostramientos o trepado interno consultar / Other wind zones, additional hook heights, tie frames or internal climbing on request / Autres zones de vent, des hauteurs supplémentaires, entretoisements ou grues avec cage de télescopage intérieure, sur demande / Andere Windzonen, weitere Hakenhöhen, Abspannungen zum Gebäude oder Klettern im Gebäude auf Anfrage / Per zone con velocità del vento particolari, altezze superiori, ancoraggi o rampante in cavedio, consultare il fabbricante / При других ветренных зонах, при большой высоте, привязках к зданию или наращивании крана внутри здания проконсультируйтесь с нами

LCL

**LINDEN COMANSA**

Construcciones Metálicas COMANSA S. A.

Tel.: (+34) 948 335 020 / Fax: (+34) 948 330 810 / E-mail: info@comansa.com  
 Polígono Urbizkain, Ctra. Aoiz nº1 31620, Huarte (Navarra), SPAIN

DS.1539.13.IA 11/16 LCL 310/52,910 Ib

Reserva de modificaciones. Subject to modifications. Modifications réservées. Konstruktionsänderungen vorbehalten.  
 Il Fabbricante si riserva la facoltà di apportare modifiche. Возможны изменения.