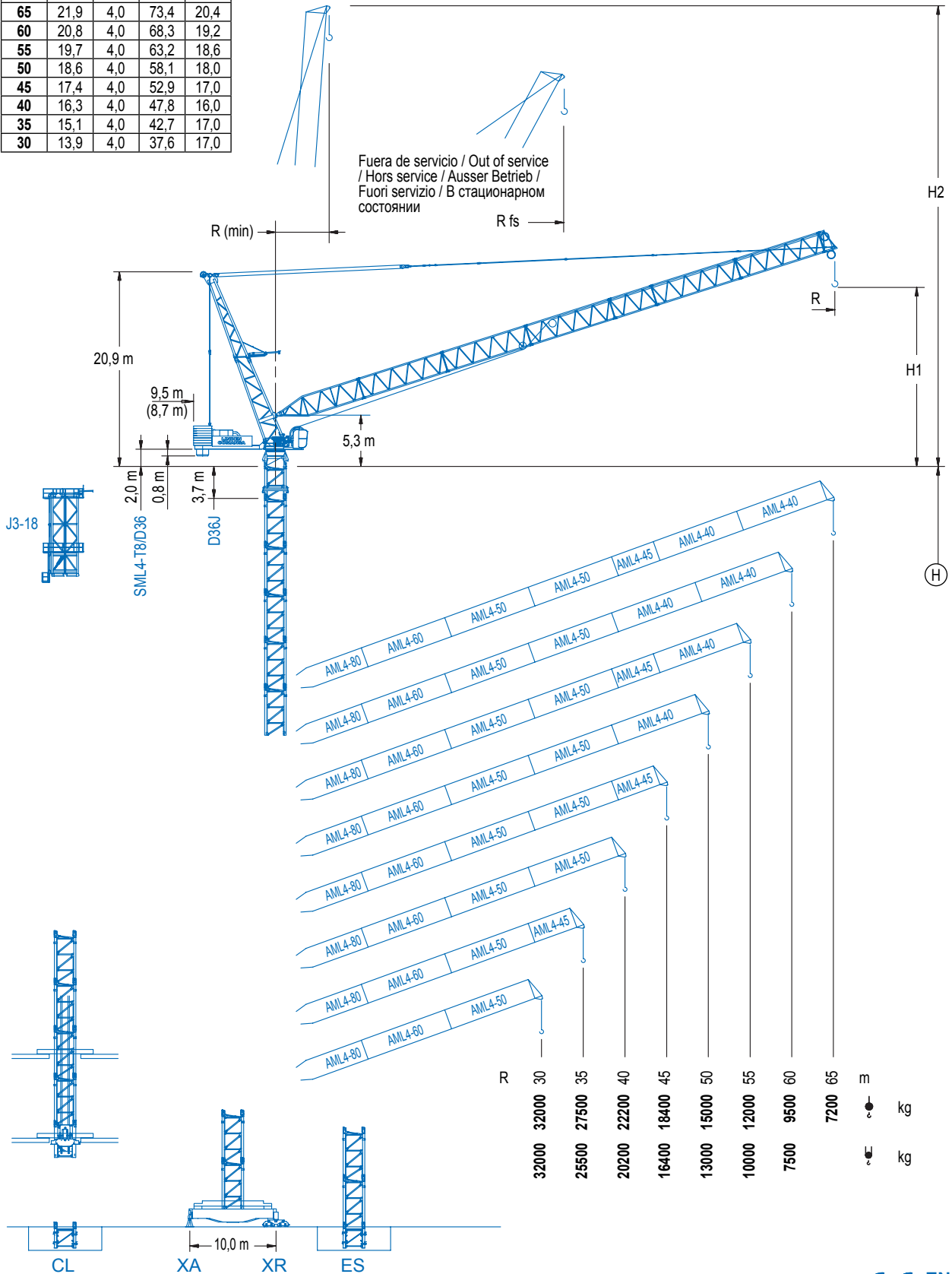


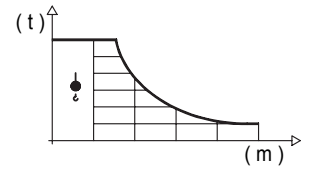
| R (max) m | H1 m | R (min) m | H2 m | Rfs m |
|-----------|------|-----------|------|-------|
| 65        | 21,9 | 4,0       | 73,4 | 20,4  |
| 60        | 20,8 | 4,0       | 68,3 | 19,2  |
| 55        | 19,7 | 4,0       | 63,2 | 18,6  |
| 50        | 18,6 | 4,0       | 58,1 | 18,0  |
| 45        | 17,4 | 4,0       | 52,9 | 17,0  |
| 40        | 16,3 | 4,0       | 47,8 | 16,0  |
| 35        | 15,1 | 4,0       | 42,7 | 17,0  |
| 30        | 13,9 | 4,0       | 37,6 | 17,0  |



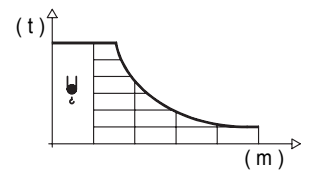
## DIAGRAMA DE CARGAS

Load chart / Diagramme de charges / Lastdiagramm / Diagramma di carico / Диаграмма распределения нагрузки

| R<br>(m) | ↓ | RCmax<br>(m) | Cmax<br>(kg) | 15 | 20 | 25    | 30    | 35    | 40    | 45    | 50    | 55    | 60   | 65   | ↔(m)<br>↓(kg) |
|----------|---|--------------|--------------|----|----|-------|-------|-------|-------|-------|-------|-------|------|------|---------------|
| 65       |   | 27,6         | 32000        |    |    | 32000 | 27160 | 20570 | 16390 | 13490 | 11350 | 9690  | 8350 | 7200 |               |
| 60       |   | 28,0         | 32000        |    |    | 32000 | 28510 | 22220 | 18040 | 15060 | 12800 | 11010 | 9500 |      |               |
| 55       |   | 28,5         | 32000        |    |    | 32000 | 29650 | 23550 | 19370 | 16320 | 13950 | 12000 |      |      |               |
| 50       |   | 29,0         | 32000        |    |    | 32000 | 30540 | 24710 | 20590 | 17490 | 15000 |       |      |      |               |
| 45       |   | 29,3         | 32000        |    |    | 32000 | 31070 | 25540 | 21530 | 18400 |       |       |      |      |               |
| 40       |   | 29,7         | 32000        |    |    | 32000 | 31600 | 26220 | 22200 |       |       |       |      |      |               |
| 35       |   | 30,5         | 32000        |    |    |       | 32000 | 27500 |       |       |       |       |      |      |               |
| 30       |   | 30,0         | 32000        |    |    |       | 32000 |       |       |       |       |       |      |      |               |

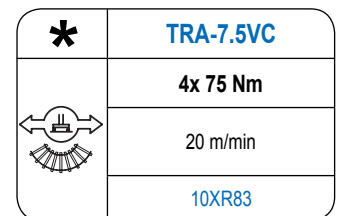
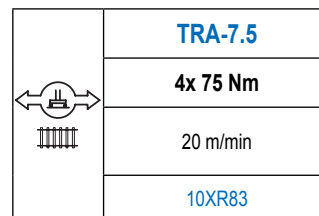
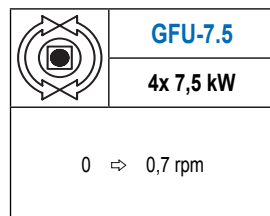
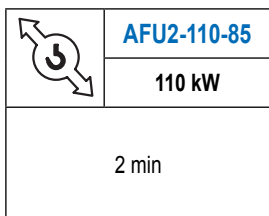
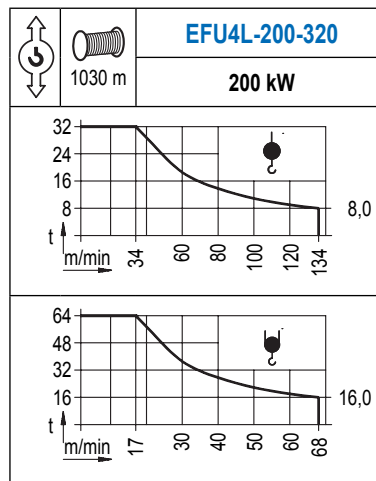


| R<br>(m) | ↓ | RCmax<br>(m) | Cmax<br>(kg) | 15    | 20    | 25    | 30    | 35    | 40    | 45    | 50    | 55    | 60   | 65 | ↔(m)<br>↓(kg) |
|----------|---|--------------|--------------|-------|-------|-------|-------|-------|-------|-------|-------|-------|------|----|---------------|
| 65       |   |              |              |       |       |       |       |       |       |       |       |       |      |    |               |
| 60       |   | 21,7         | 42000        |       | 42000 | 32760 | 24260 | 18930 | 15280 | 12600 | 10550 | 8910  | 7500 |    |               |
| 55       |   | 17,9         | 54000        | 54000 | 45540 | 32630 | 25050 | 20060 | 16510 | 13840 | 11750 | 10000 |      |    |               |
| 50       |   | 16,5         | 60000        | 60000 | 46000 | 33990 | 26620 | 21630 | 18010 | 15240 | 13000 |       |      |    |               |
| 45       |   | 15,6         | 64000        | 64000 | 46610 | 35200 | 27970 | 22970 | 19290 | 16400 |       |       |      |    |               |
| 40       |   | 15,7         | 64000        | 64000 | 47630 | 36350 | 29100 | 24020 | 20200 |       |       |       |      |    |               |
| 35       |   | 15,9         | 64000        | 64000 | 49230 | 38040 | 30720 | 25500 |       |       |       |       |      |    |               |
| 30       |   | 16,1         | 64000        | 64000 | 50500 | 39380 | 32000 |       |       |       |       |       |      |    |               |



## MECANISMOS

Mechanisms / Mécanismes / Antriebe / Meccanismi / Механизмы



| POTENCIA / POWER / PUISSANCE / LEISTUNG / POTENZA / МОЩНОСТЬ             |  |  |   | Tensión de alimentación / Operating voltage / Tension de service / Betriebsspannung / Tensione di alimentazione / Напряжение источника питания | Generador / Generator / Générateur / Generator / Generatore / Генератор |
|--|--|--|---|--|---|
| Elevación / Hoist / Levage / Hub / Sollevamento / Тип механизма (подъем) | Abatimiento / Luffing / Releage / Einziehen / Brandeggio / Складывание | Giro / Slewing / Rotation / Drehbewegung / Rotazione / Поворот | Traslación / Travel / Translation / Verfahrbewegung / Traslazione / Ход | 400 V<br>3ph<br>50 Hz  | 650 kVA   |
| EFU4L-200-320  | AFU2-110-85  | (4x) GFU-7.5   | (4x) TRA-7.5  |  |   |

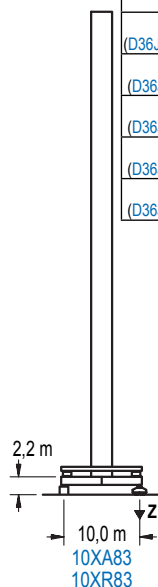
Opcional / Optional / En option / Kaufoption / Opzionale / Опционально

**\***

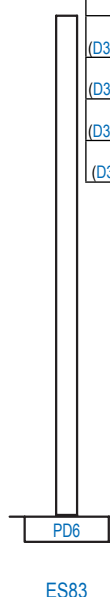
## ALTURAS DE TORRE

Tower height / Hauteurs de tour / Turmhöhen / Altezza della torre / Высота башни

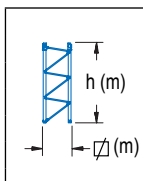
∅ 2,5 m



| (H) (m)                  | (H) (m)      | (H) (m)                |
|--------------------------|--------------|------------------------|
| 60,9<br>(D36J + 10x D36) | 30           |                        |
| 55,4<br>(D36J + 9x D36)  | 35 / 40 / 45 |                        |
| 49,9<br>(D36J + 8x D36)  | 50 / 55 / 60 |                        |
| 44,4<br>(D36J + 7x D36)  | 65           | 30 / 35                |
| 38,9<br>(D36J + 6x D36)  |              | 40 / 45 / 50 / 55 / 60 |



| (H) (m)                  | (H) (m)      | (H) (m)      |
|--------------------------|--------------|--------------|
| 69,8<br>(D36J + 12x D36) | 30 / 35      | 30 / 35      |
| 64,3<br>(D36J + 11x D36) | 40 / 45      | 40 / 45      |
| 58,8<br>(D36J + 10x D36) | 50 / 55 / 60 | 50 / 55 / 60 |
| 53,3<br>(D36J + 9x D36)  | 65           |              |



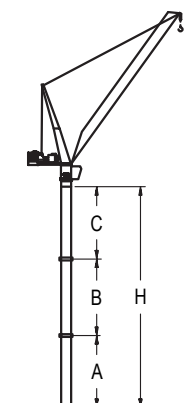
| n° | Ref. | ∅   | h   |
|----|------|-----|-----|
| 1  | D36J | 2,5 | 3,7 |
| 2  | D36  | 2,5 | 5,5 |

|        |  |                  |
|--------|--|------------------|
| Z máx. | En servicio / In operation / En service / In Betrieb / In servizio / При работе                                | 10XR83.... 188 t |
|        | Fuera de servicio / Out of service / Hors service / Ausser Betrieb / Fuori servizio / В стационарном состоянии | 10XR83... 175 t  |

## GRÚA ARRIOSTRADA

Braced crane / Grue à entretoisement / Abgespannter Kran / Gru ancorata / Наращиваемый кран

∅ 2,5 m



| 10XA83 |      |              |      |              |      |      |       |
|--------|------|--------------|------|--------------|------|------|-------|
| R      | 65   | 60 / 55 / 50 |      | 45 / 40 / 35 |      | 30   |       |
| A max  | 29,7 | 35,2         |      | 40,7         |      | 46,2 |       |
| A min  | 29,7 | 35,2         |      | 35,2         |      | 35,2 |       |
| B max  | -    | -            | -    | -            | 33,0 | -    | 38,5  |
| B min  | -    | -            | -    | -            | 33,0 | -    | 33,0  |
| C max  | 31,2 | -            | 42,2 | -            | 47,7 | 53,2 | 53,2  |
| H max  | 60,9 | -            | 77,4 | -            | 88,4 | 99,4 | 137,9 |

| ES83  |      |              |      |         |      |         |       |
|-------|------|--------------|------|---------|------|---------|-------|
| R     | 65   | 60 / 55 / 50 |      | 45 / 40 |      | 35 / 30 |       |
| A max | 38,6 | 44,1         |      | 49,6    |      | 55,1    |       |
| A min | 33,1 | 38,6         |      | 38,6    |      | 38,6    |       |
| B max | -    | 27,5         | -    | 33,0    | -    | 33,0    | 38,5  |
| B min | -    | 27,5         | -    | 27,5    | -    | 33,0    | 33,0  |
| C max | 42,2 | 36,7         | 47,7 | 42,2    | 47,7 | 53,2    | 53,2  |
| H max | 80,0 | 102,8        | 91,8 | 119,3   | 97,3 | 130,3   | 146,8 |

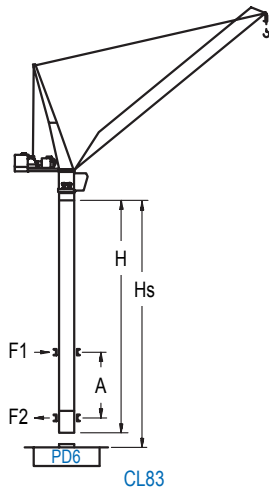
| 10XA83 |         |   |              |   |         |      |
|--------|---------|---|--------------|---|---------|------|
| R      | 60 / 55 |   | 50 / 45 / 40 |   | 35 / 30 |      |
| A max  | 24,2    |   | 24,2         |   | 29,7    |      |
| A min  | 24,2    |   | 24,2         |   | 29,7    |      |
| B max  | -       | - | -            | - | -       | 27,5 |
| B min  | -       | - | -            | - | -       | 27,5 |
| C max  | 20,2    | - | 25,7         | - | 42,2    | 42,2 |
| H max  | 44,4    | - | 49,9         | - | 71,9    | 99,4 |

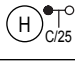

| ES83  |              |       |         |       |         |       |
|-------|--------------|-------|---------|-------|---------|-------|
| R     | 60 / 55 / 50 |       | 45 / 40 |       | 35 / 30 |       |
| A max | 44,1         |       | 49,6    |       | 55,1    |       |
| A min | 38,6         |       | 38,6    |       | 38,6    |       |
| B max | -            | 33,0  | -       | 33,0  | -       | 38,5  |
| B min | -            | 27,5  | -       | 33,0  | -       | 33,0  |
| C max | 47,7         | 42,2  | 47,7    | 47,7  | 53,2    | 53,2  |
| H max | 91,8         | 119,3 | 97,3    | 130,3 | 108,3   | 146,8 |

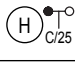

# GRÚA TREPADORA

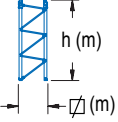
Internal climbing crane / Grue avec cage de télescopage intérieure / Kran mit klettern im Gebäude / Gru in rampante in cavedio / Кран с самоподъемом

∅ 2,5 m



|  C/25 |  (m) | Hs < 500 m |           |
|--|---|------------|-----------|
|  |   | A max (m)  | A min (m) |
| <b>51,5</b><br>(D36J + 4x D36 + 4x D36A + CLD36)                                       | 30 / 35 / 40 / 45   | 21,9       | 10        |
| <b>46,0</b><br>(D36J + 3x D36 + 4x D36A + CLD36)                                       | 50 / 55 / 60 / 65   | 19,1       | 11        |

|  C/25 |  (m) | Hs < 500 m |           |
|--|---|------------|-----------|
|  |   | A max (m)  | A min (m) |
| <b>51,5</b><br>(D36J + 4x D36 + 4x D36A + CLD36)                                       | 30 / 35 / 40 / 45   | 21,9       | 10        |
| <b>46,0</b><br>(D36J + 3x D36 + 4x D36A + CLD36)                                       | 50 / 55 / 60  | 19,1       | 11        |

|  |       |       |       |
|---|-------|-------|-------|
| nº  | Ref.  | ∅ (m) | h (m) |
| 1   | D36J  | 2,5   | 3,7   |
| 2   | D36   | 2,5   | 5,5   |
| 3   | D36A  | 2,5   | 5,5   |
| 4   | CLD36 | 2,5   | 3,8   |

Otras zonas de viento, alturas superiores, arriostramientos o trepado interno consultar / Other wind zones , additional hook heights, tie frames or internal climbing on request / Autres zones de vent, des hauteurs supplémentaires, entretoisements où grues avec cage de télescopage intérieure, sur demande / Andere Windzonen, weitere Hakenhöhen, Abspannungen zum Gebäude oder Klettern im Gebäude auf Anfrage / Per zone con velocità del vento particolari, altezze superiori, ancoraggi o rampante in cavedio, consultare il fabbricante / При других ветренных зонах, при большой высоте, привязках к зданию или наращивании крана внутри здания проконсультируйтесь с нами