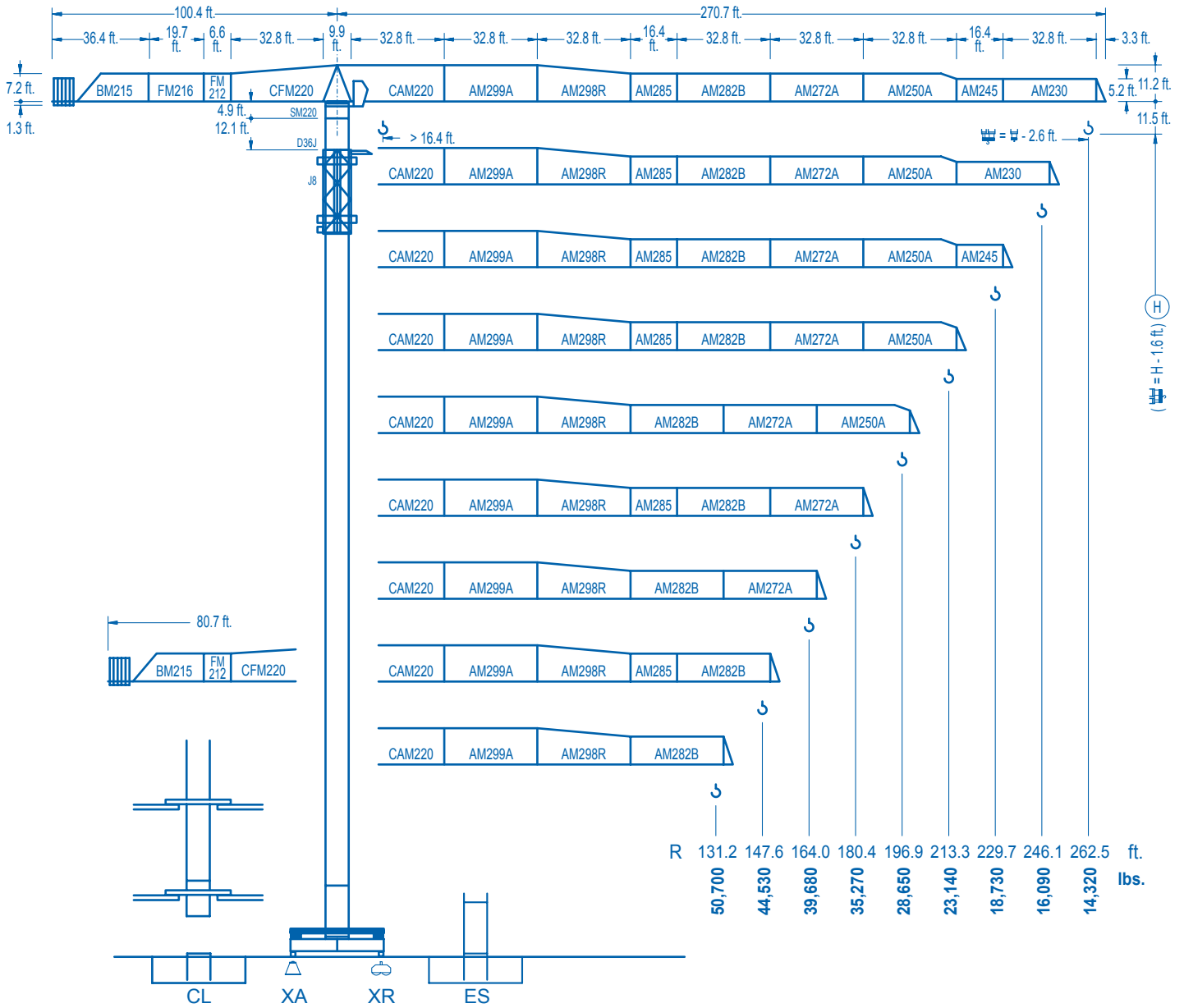


LINDEN 2100

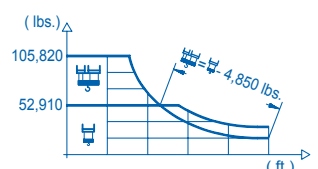
21 LC 750

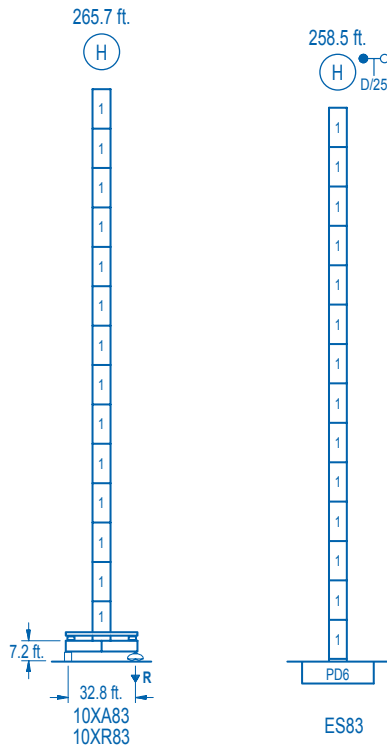
105,820 lbs.



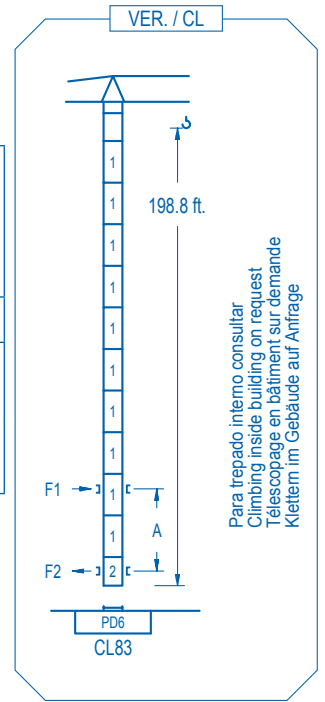
CE EN 14439 (C/25)

| R (ft.) | ☰ | | | | | | | | | | ☷ | | | | | | | | | |
|---------|---------|--------|--------|--------|--------|--------|--------|--------|--------|--------|--------|--------|--------|--------|--------|--------|--------|--------|--------|------|
| 262.5 | 48.2 | 55.8 | 62.3 | 65.6 | 72.2 | 84.3 | 89.2 | 105.0 | 114.8 | 124.7 | 131.2 | 147.6 | 164.0 | 180.4 | 196.9 | 213.3 | 229.7 | 246.1 | 262.5 | ft. |
| | 105,820 | 88,250 | 77,000 | 72,280 | 64,240 | 52,910 | 52,910 | 43,840 | 39,500 | 35,910 | 33,810 | 29,400 | 25,920 | 23,080 | 20,740 | 18,760 | 17,060 | 15,600 | 14,320 | lbs. |
| 246.1 | 48.9 | 55.8 | 62.3 | 65.6 | 72.2 | 86.0 | 91.2 | 105.0 | 114.8 | 124.7 | 131.2 | 147.6 | 164.0 | 180.4 | 196.9 | 213.3 | 229.7 | 246.1 | ft. | |
| | 105,820 | 90,190 | 78,700 | 73,890 | 65,690 | 52,910 | 52,910 | 45,010 | 40,580 | 36,880 | 34,740 | 30,240 | 26,670 | 23,760 | 21,340 | 19,310 | 17,590 | 16,090 | lbs. | |
| 229.7 | 50.9 | 55.8 | 62.3 | 65.6 | 72.2 | 89.6 | 95.8 | 105.0 | 114.8 | 124.7 | 131.2 | 147.6 | 164.0 | 180.4 | 196.9 | 213.3 | 229.7 | ft. | | |
| | 105,820 | 94,840 | 82,820 | 77,800 | 69,200 | 52,910 | 52,910 | 47,590 | 42,940 | 39,040 | 36,790 | 32,050 | 28,280 | 25,220 | 22,700 | 20,560 | 18,730 | lbs. | | |
| 213.3 | 55.4 | 62.3 | 65.6 | 72.2 | 82.0 | 97.8 | 105.0 | 114.8 | 124.7 | 131.2 | 147.6 | 164.0 | 180.4 | 196.9 | 213.3 | ft. | | | | |
| | 105,820 | 91,750 | 86,240 | 76,830 | 65,710 | 52,910 | 52,910 | 47,830 | 43,540 | 41,040 | 35,820 | 31,680 | 28,300 | 25,500 | 23,140 | lbs. | | | | |
| 196.9 | 60.4 | 65.6 | 72.2 | 82.0 | 95.1 | 107.0 | 115.8 | 124.7 | 131.2 | 147.6 | 164.0 | 180.4 | 196.9 | ft. | | | | | | |
| | 105,820 | 95,720 | 85,400 | 73,190 | 61,060 | 52,910 | 52,910 | 48,610 | 45,850 | 40,070 | 35,470 | 31,740 | 28,650 | lbs. | | | | | | |
| 180.4 | 65.3 | 72.2 | 82.0 | 95.1 | 105.0 | 116.1 | 126.3 | 131.2 | 147.6 | 164.0 | 180.4 | ft. | | | | | | | | |
| | 105,820 | 94,090 | 80,770 | 67,540 | 59,890 | 52,910 | 52,910 | 50,740 | 44,400 | 39,370 | 35,270 | lbs. | | | | | | | | |
| 164.0 | 65.6 | 72.2 | 82.0 | 95.1 | 105.0 | 116.5 | 127.3 | 131.2 | 147.6 | 164.0 | ft. | | | | | | | | | |
| | 105,820 | 94,440 | 81,080 | 67,810 | 60,140 | 52,910 | 52,910 | 51,140 | 44,750 | 39,680 | lbs. | | | | | | | | | |
| 147.6 | 65.0 | 72.2 | 82.0 | 95.1 | 105.0 | 115.5 | 127.0 | 131.2 | 147.6 | ft. | | | | | | | | | | |
| | 105,820 | 93,560 | 80,310 | 67,150 | 59,540 | 52,910 | 52,910 | 50,880 | 44,530 | lbs. | | | | | | | | | | |
| 131.2 | 64.6 | 72.2 | 82.0 | 95.1 | 105.0 | 114.5 | 126.3 | 131.2 | ft. | | | | | | | | | | | |
| | 105,820 | 92,740 | 79,600 | 66,530 | 58,990 | 52,910 | 52,910 | 50,700 | lbs. | | | | | | | | | | | |





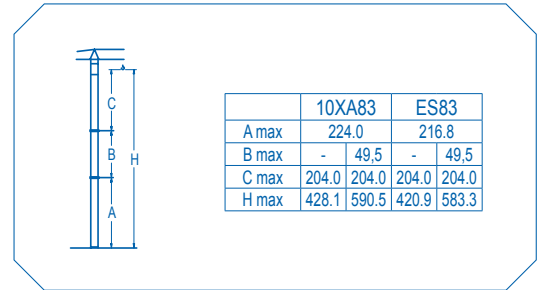
| nº | Ref. | h (ft.) |
|----|-------|---------|
| 1 | D36 | 8.2 |
| 2 | CLD36 | 8.2 |



Para trepado interno consultar
Climbing inside building on request
Téléscopage en bâtiment sur demande
Klettem im Gebäude auf Anfrage

| | | | | | |
|----------------|---|-----------------------|----------------|---|-----------------------|
| R. máx. | En servicio In operation En service In Betrieb | 10XR83...376,050 lbs. | R. máx. | Fuera de servicio Out of service Hors service Ausser Betrieb | 10XR83...356,710 lbs. |
|----------------|---|-----------------------|----------------|---|-----------------------|

Para otras zonas de viento o alturas superiores consultar
For other wind zones or additional hook heights on request
Pour d'autres zones de vent ou des hauteurs supplémentaires sur demande
Für andere Windzonen oder weiteren Hakenhöhen auf Anfrage

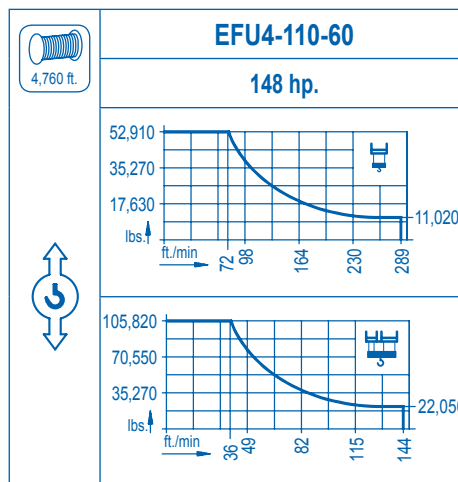


CFU-13
17.4 hp.
0 ⇄ 246 ft./min

GR-14
4 x 103 ft.lbs.
0 ⇄ 0,7 rpm

TRA-10
2 x 74 ft.lbs.
0 ⇄ 78 ft./min

TRA-10VC *
2 x 74 ft.lbs.
0 ⇄ 78 ft./min



| | |
|--|------------------------|
| Tensión de alimentación Operating voltage Tension de service Betriebsspannung | 480 V 3 ph 60 Hz |
|--|------------------------|

| | |
|---|---|
| Opcional Optional En option Kaufoption | * |
|---|---|